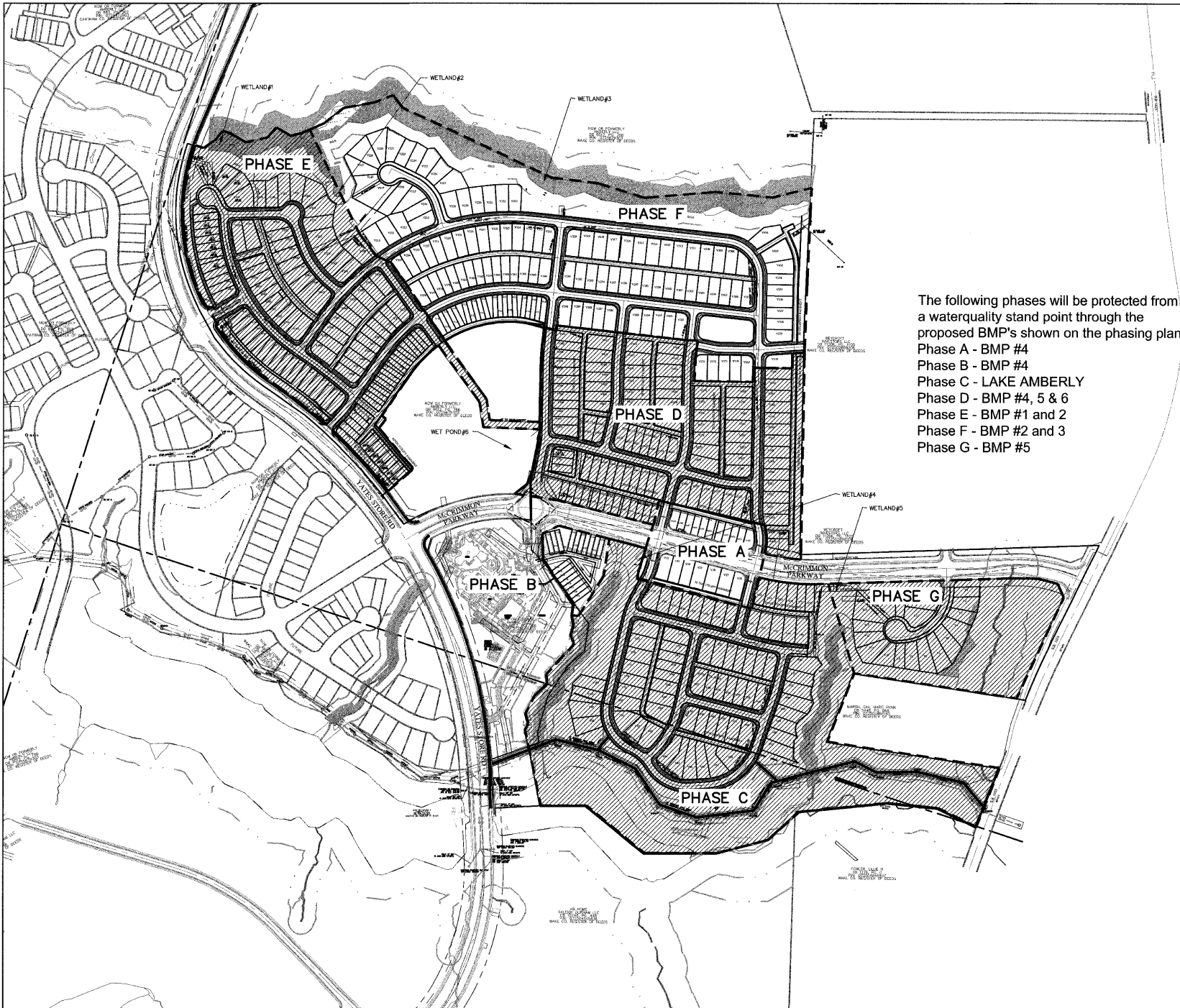


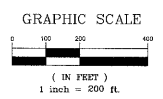
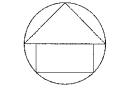
V:\Projects\Sells Projects\04_4200\180\Drawings\05-4001_4201_cenrct.dwg, 1st layout, C:0 - 60, 7/19/2006 10:51:43 PM



The following phases will be protected from a waterquality stand point through the proposed BMP's shown on the phasing plan.
 Phase A - BMP #4
 Phase B - BMP #4
 Phase C - LAKE AMBERLY
 Phase D - BMP #4, 5 & 6
 Phase E - BMP #1 and 2
 Phase F - BMP #2 and 3
 Phase G - BMP #5

NOTE:

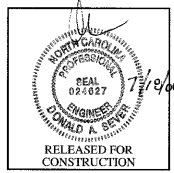
1. ALL STREETS AND ALLEYS WITHIN OR ADJACENT TO A PHASE MUST BE COMPLETED AS PART OF THAT PHASE
2. STREETS MUST BE CONSTRUCTED TO CREATE A LOOP OR TEMPORARY TURNAROUNDS MUST BE CONSTRUCTED AT THE END OF EACH TEMPORARY DEAD END STREET
3. SANITARY SEWER PHASING LINE MUST BE AT A MANHOLE AND THERE MUST BE A VALVE AND BLOW-OFF ON THE WATERLINE AT THE PHASING BOUNDARY



05-SB-010A
 APPROVED
 TOWN OF CARY

Approved by: DC Date: 7-10-06
 Planning: BPD Date: 7-21-06
 Engineering: TS Date: 7-25-06

CHAS. H. SELLS, INC.
 Consulting Engineers, Surveyors & Photogrammetrists
 15300 Weston Parkway
 Suite 106
 Cary, NC 27513
 Tel: 919-678-0333
 Fax: 919-678-0206
 www.chasells.com



RELEASED FOR CONSTRUCTION

Village Square at Amberly

Cary, NC

GS Carolina
 3412 Capital Blvd.
 Raleigh, NC 27607

REVISIONS	
1	4/17/2006 ADDED PHASING

PROJECT #: 05-4007 DATE: 7/18/06
 DRAWN BY: JE CHECKED BY: DS
 TITLE
OVERALL LOT LAYOUT
 SHEET
C1.0

© CHASSELLS, INC. ALL RIGHTS ARE RESERVED. ANY PERMISSION, REPRODUCTION OR OTHER USE OF THIS DOCUMENT WITHOUT PERMISSION FROM CHAS. H. SELLS, INC. IS EXPRESSLY PROHIBITED.