

**PERKINS EASTMAN**  
520 WEST SIXTH ST  
CHARLOTTE, NC 28202  
704.940.0501  
FAX 362.4602

**Owner:**  
UNC HOSPITALS  
101 MANNING DR SUITE 6012  
CHAPEL HILL, NC 27514

**Civil / Site:**  
**STEWART ENGINEERING**  
200 S. COLLEGE ST SUITE 720  
CHARLOTTE, NC 28202 704.334.7925

**Landscape:**  
**STEWART ENGINEERING**  
200 S. COLLEGE ST SUITE 720  
CHARLOTTE, NC 28202 704.334.7925

**Structural:**  
**STEWART ENGINEERING**  
200 S. COLLEGE ST SUITE 720  
CHARLOTTE, NC 28202 704.334.7925

**MECHANICAL, PLUMBING & FIRE PROTECTION**  
**RDK**  
4021 STIRRUP CREEK DR SUITE 400  
DURHAM, NC 27703 919.460.1440

**ELECTRICAL**  
**RDK**  
4021 STIRRUP CREEK DR SUITE 400  
DURHAM, NC 27703 919.460.1440

**POOL CONSULTANT**  
**COUSLMAN-HUNSAKER**  
10733 SUNSET OFFICE DR SUITE 400  
ST. LOUIS, MO 63129 314.894.1245

PROJECT TITLE:  
**AMBERLY WELLNESS CENTER**  
**UNC**  
WELLNESS CENTERS  
AMBERLY  
CARY, NORTH CAROLINA  
PROJECT No: 24911.00

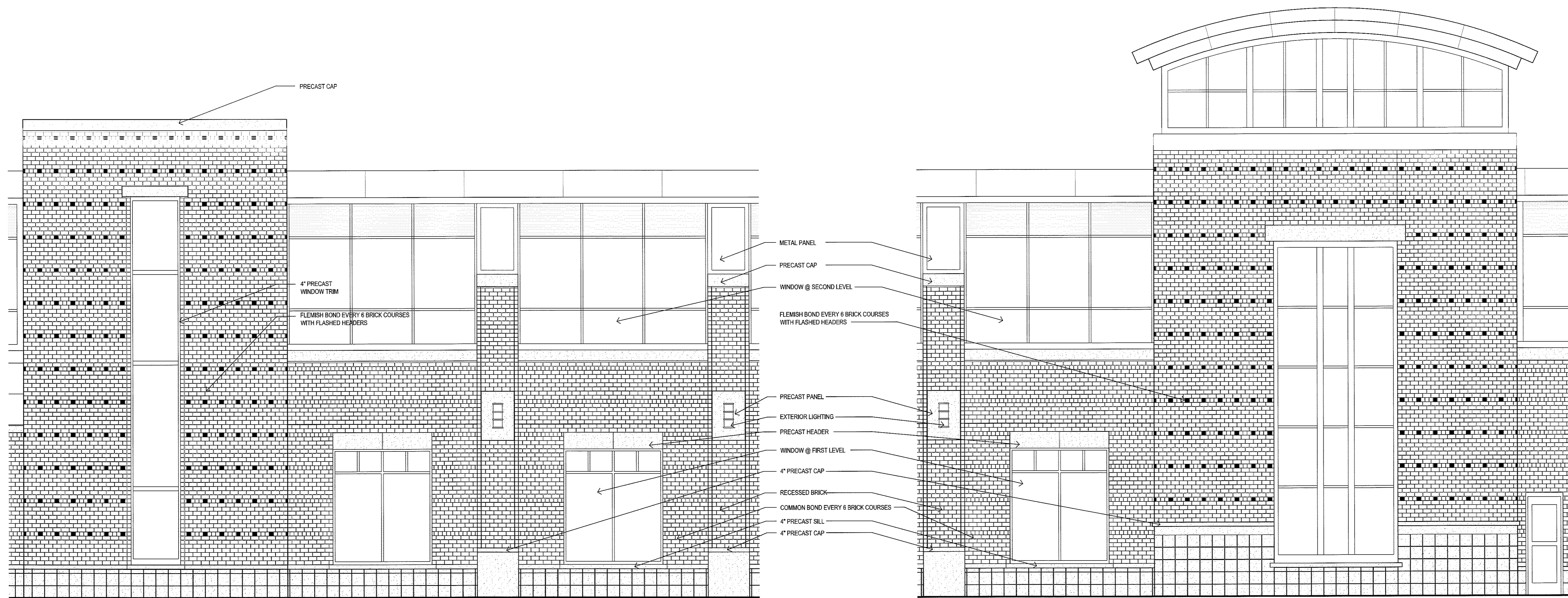
DRAWING TITLE:  
**ENLARGED BUILDING ELEVATION**

SCALE: AS NOTED  
**A2.5**

DATE: APRIL 20, 2011

07-SP-024  
APPROVED  
TOWN OF CARY

Approved by	<u>DRC</u>	Date	<u>10/15/2007</u>
Planning	<u>KAL</u>	Date	<u>4/28/2011</u>
Engineering		Date	



**2 PARTIAL WEST ELEVATION - TOWN CENTER ROAD**  
SCALE: 1/4" = 1'-0"

**1 PARTIAL WEST ELEVATION - TOWN CENTER ROAD**  
SCALE: 1/4" = 1'-0"