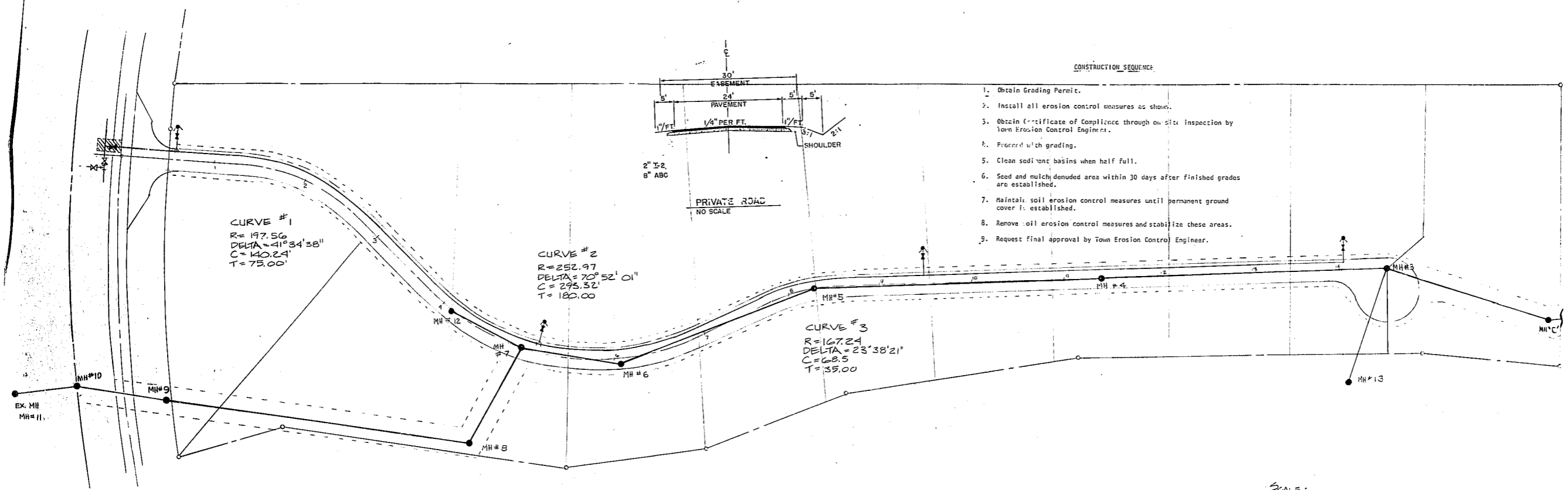
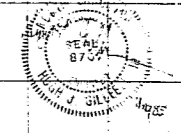
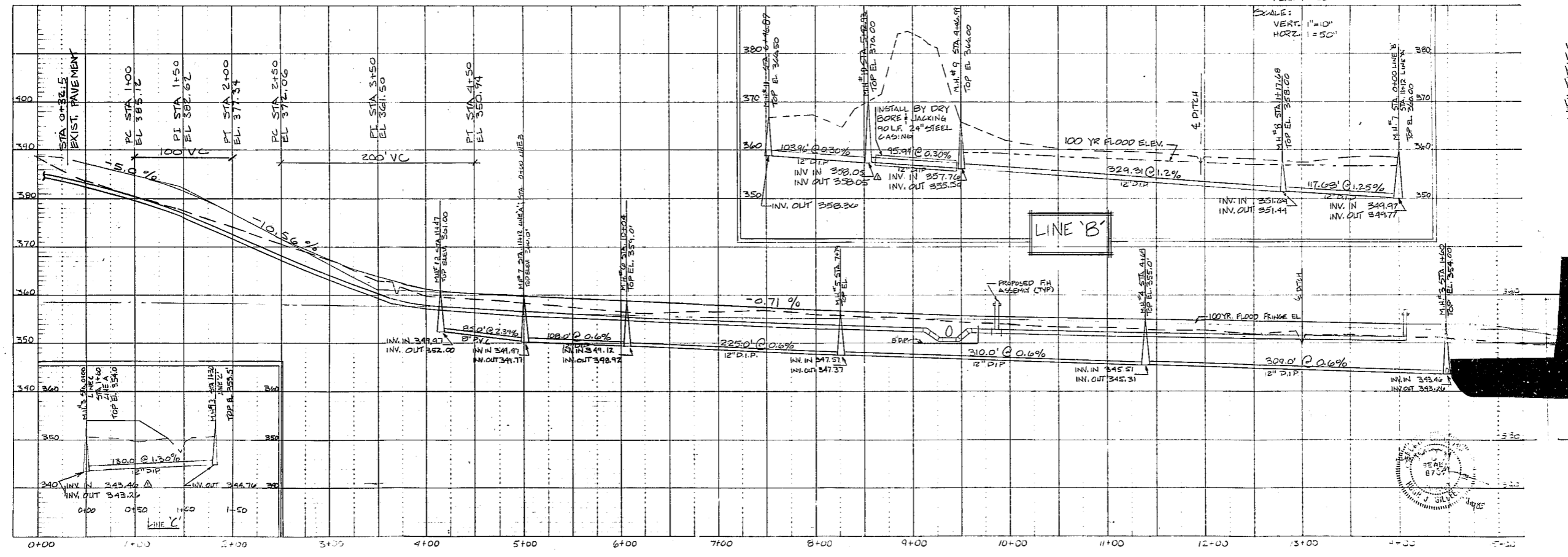


UTILITIES



- CONSTRUCTION SEQUENCE
1. Obtain Grading Permit.
 2. Install all erosion control measures as shown.
 3. Obtain Certificate of Compliance through on-site inspection by Town Erosion Control Engineer.
 4. Proceed with grading.
 5. Clean sediment basins when half full.
 6. Seed and mulch denuded area within 30 days after finished grades are established.
 7. Maintain soil erosion control measures until permanent ground cover is established.
 8. Remove soil erosion control measures and stabilize these areas.
 9. Request final approval by Town Erosion Control Engineer.



Approved for
 10/10/10
 HJG