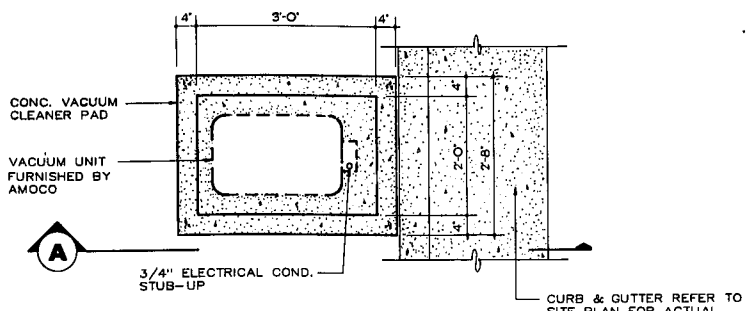
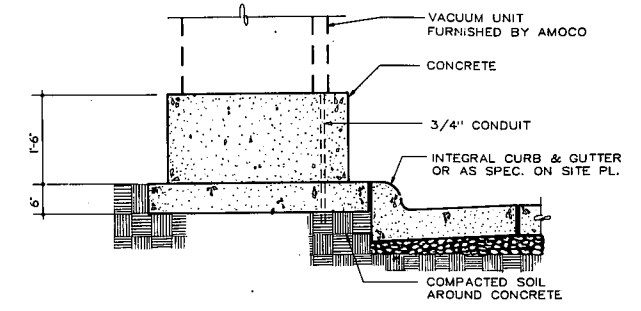


**NOTE:**  
SEE CANOPY MANUFACTURER'S DRAWINGS FOR FOOTING DESIGN AND ANCHORAGE DETAILS.  
SEE TYPICAL CONSTRUCTION JOINT DETAIL FOR MORE INFORMATION.

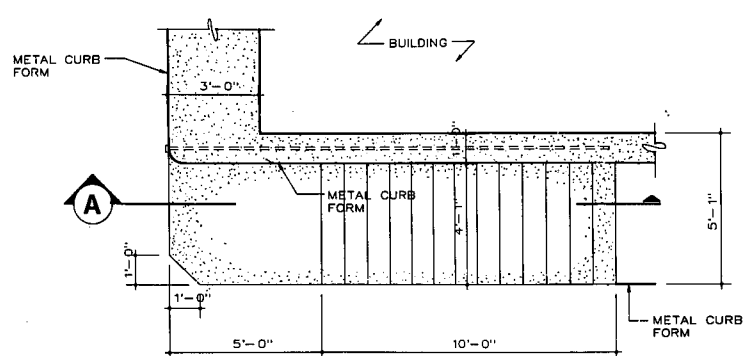
**1**  
**SD-2**  
**SECTION THRU ISLAND AT CANOPY COL.**  
(SCALE: 3/4"=1'-0")



**2**  
**SD-2**  
**VACUUM CLEANER PAD DETAIL**  
(SCALE: 1"=1'-0")

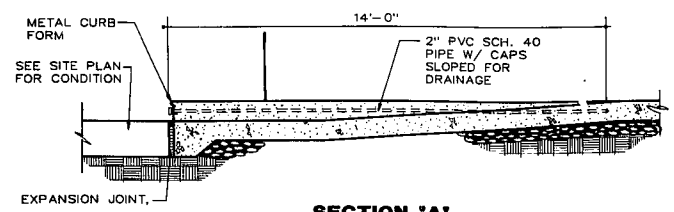


**SECTION 'A'**

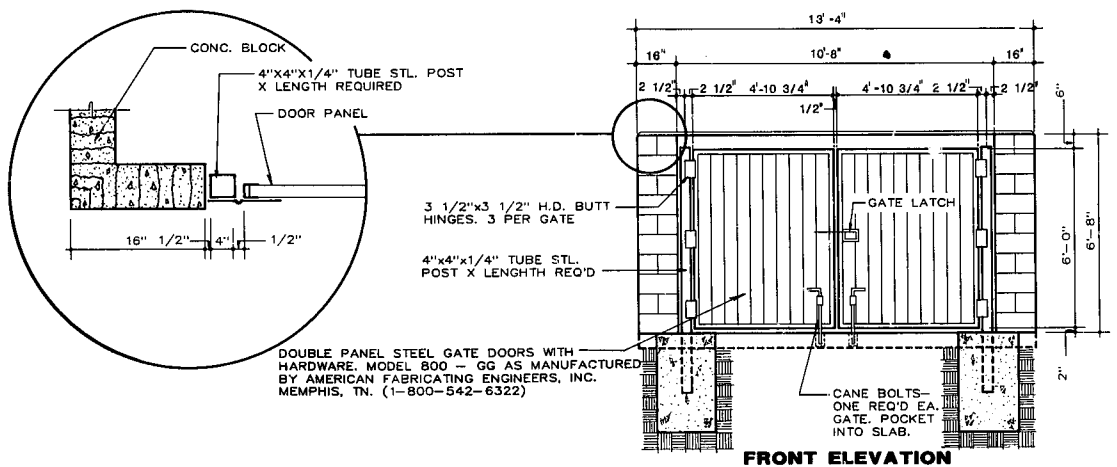


(AS PER SITE CONDITIONS, SEE SITE PLAN) MAXIMUM GRADE NOT TO EXCEED OR AS PER STATE & LOCAL HANDICAP CODE.

**PLAN VIEW**

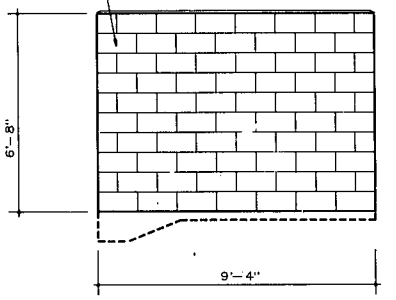


**3**  
**SD-2**  
**SECTION THRU GAUGE STICK STORAGE TUBE**  
(NOT TO SCALE)

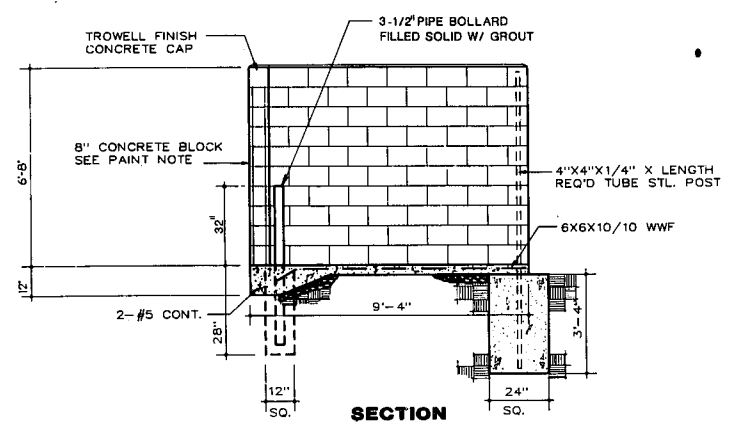


**FRONT ELEVATION**

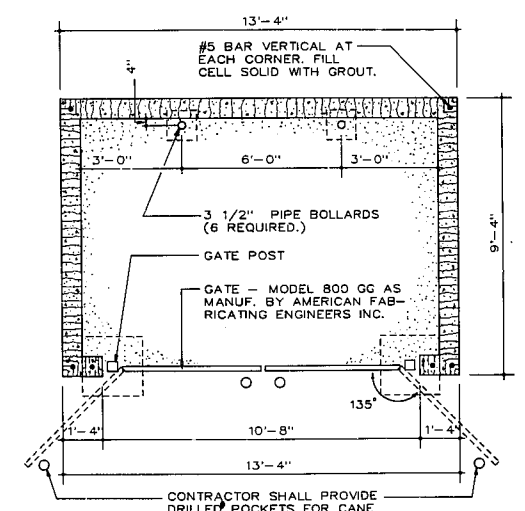
EXT. & INT. OF CONC. BLOCK WALL SHALL BE FILLED & SEALED AS PER PAINT MANUF. SPECS. BEFORE APPLICATION OF FINISH COAT. FINISH COAT SHALL BE DUPONT IMRON #26 LIGHT GREY (FURNISHED BY AMOCO) FILLER & SEALER FURNISHED BY GEN CONTR.



**LEFT SIDE ELEVATION**



**SECTION**



**PLAN VIEW**

CONTRACTOR SHALL PROVIDE DRILLED POCKETS FOR CANE BOLTS WHEN DOORS ARE IN OPEN POSITION.

**4**  
**SD-2**  
**DUMPSTER ENCLOSURE DETAIL**  
(SCALE: 3/8"=1'-0")

Date	No.	Revisions	By

**SITE DETAILS**

Scale	District
Drawn By	
Checked By	
Approved	Date
	No. <b>SD-2</b>

Do not scale, use dimensions only