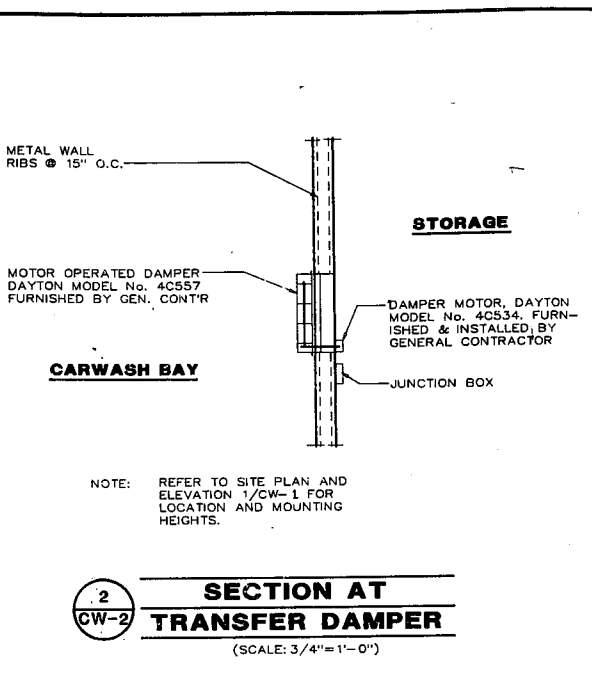
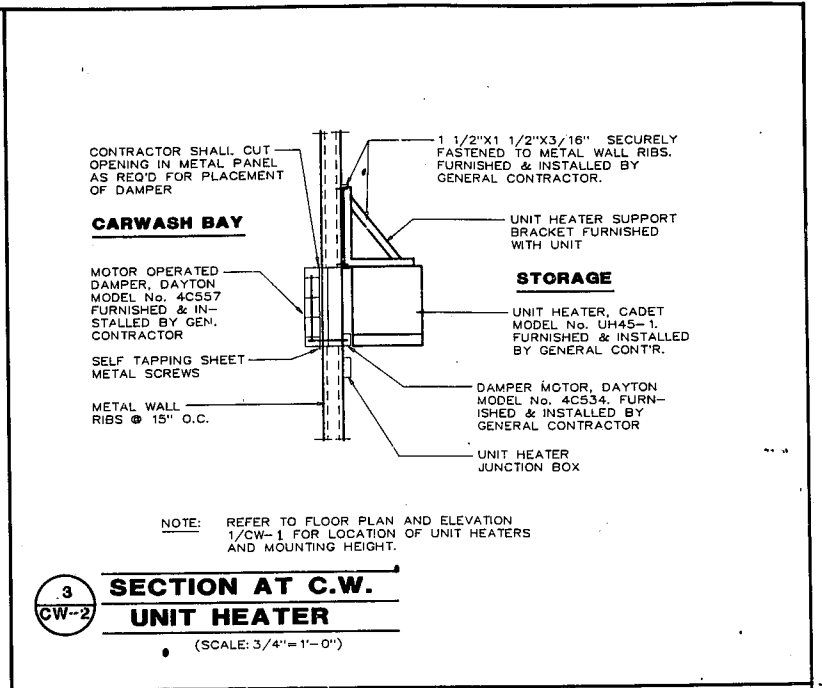


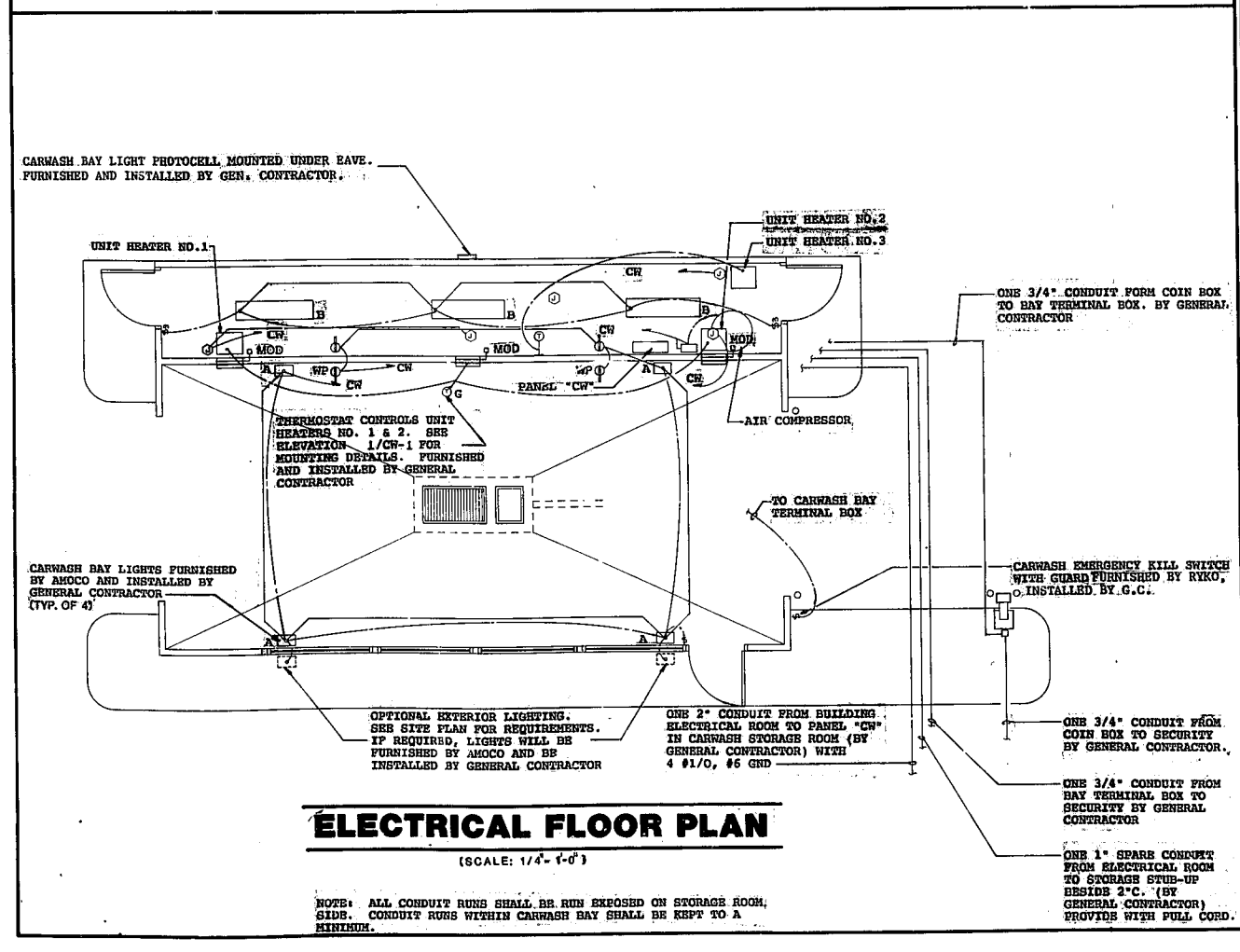
**1 SECTION AT CARWASH FLOOR**  
(SCALE: 1/2"=1'-0")



**2 SECTION AT TRANSFER DAMPER**  
(SCALE: 3/4"=1'-0")



**3 SECTION AT C.W. UNIT HEATER**  
(SCALE: 3/4"=1'-0")



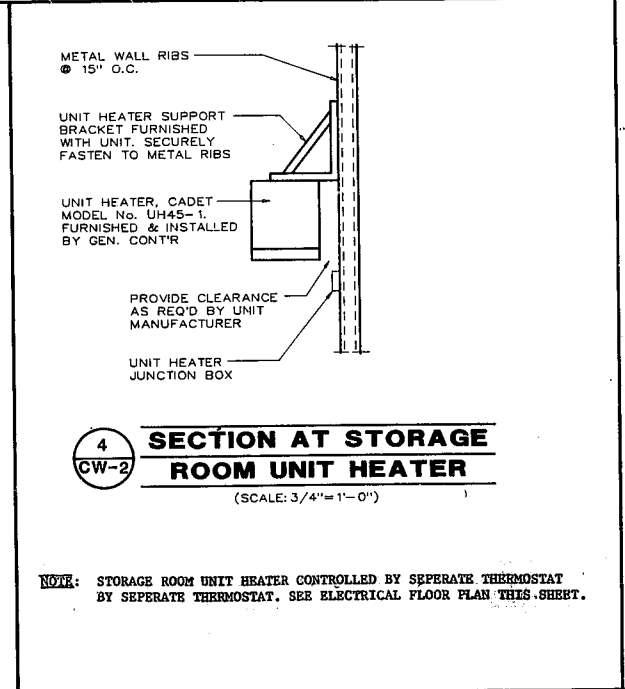
**ELECTRICAL FLOOR PLAN**  
(SCALE: 1/4"=1'-0")

NOTE: ALL CONDUIT RUNS SHALL BE RUN EXPOSED ON STORAGE ROOM, SIDE. CONDUIT RUNS WITHIN CARWASH BAY SHALL BE KEPT TO A MINIMUM.

**LIGHT FIXTURE SCHEDULE**

MARK	MANUFACTURER/ MODEL No.	LAMP	FURNISHED BY	FURNISHED BY	QUANTITY
A	LSI # EQ 175SMH	1-175W	AOC	GEN. CONTR	FOUR *
B	LITHONIA # C240-120	2-F40CW	GEN. CONTR	GEN. CONTR	THREE

\* SIX FIXTURES WILL BE PROVIDED IF OPTIONAL EXTERIOR LIGHTING IS REQUIRED.



**4 SECTION AT STORAGE ROOM UNIT HEATER**  
(SCALE: 3/4"=1'-0")

Date: \_\_\_\_\_ Revisions: \_\_\_\_\_ By: \_\_\_\_\_

**AMOCO**

**CAR WASH INSTALLATION DETAILS**

Scale: \_\_\_\_\_ District: \_\_\_\_\_

Drawn By: \_\_\_\_\_ Date: \_\_\_\_\_

Checked By: \_\_\_\_\_

Approved: \_\_\_\_\_ No. **CW-2**

Do not scale, use dimensions only