

THE PRESTON PARTNERSHIP, LLC
A MULTI-DISCIPLINARY DESIGN FIRM

1000 ABRERNATHY ROAD NE, SUITE 600
ATLANTA, GEORGIA 30328
TELEPHONE: 770 396 7248
FAX: 770 396 2945

WWW.THEPRESTONPARTNERSHIP.COM

CONSULTANT

SEAL



PROJECT

THE ARBORETUM AT WESTON - PHASE II

CARY, NORTH CAROLINA

FOR

PRESTON
DEVELOPMENT
COMPANY

ARBORETUM ASSOCIATES,
LLC

REVISIONS

DATE

21 FEBRUARY, 2005

JOB NUMBER

0414101

DRAWN BY

VN

CHECKED BY

CLH

DRAWING TITLE

BUILDING ELEVATIONS

DRAWING NUMBER

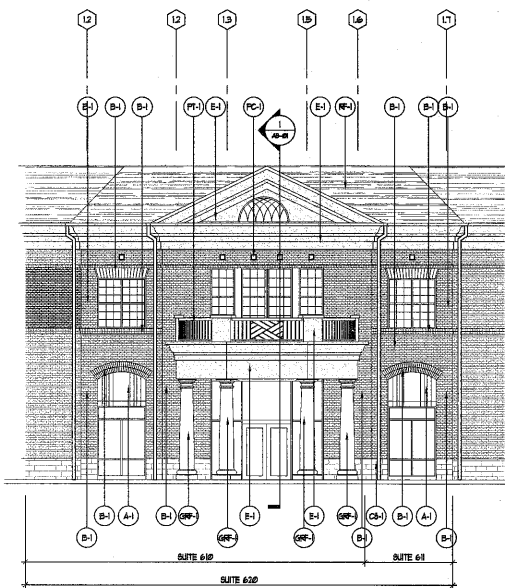
A4-01

COMMENTS

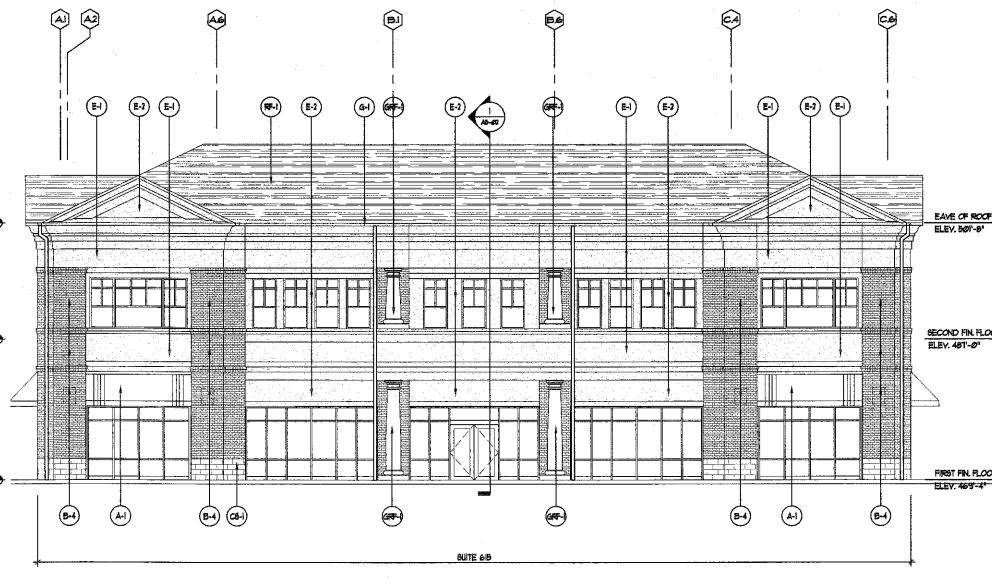
SITE REVIEW SET - 2/21/05



3 SOUTH ELEVATION
SCALE: 1/8" = 1'-0"



2 SOUTHWEST ELEVATION
SCALE: 1/8" = 1'-0"

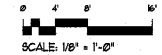


1 EAST ELEVATION (WESTON PARKWAY)
SCALE: 1/8" = 1'-0"

- NOTES:
1. ALL HVAC EQUIPMENT TO BE SCREENED BY HANGAR ROOF AT BLDG. ROOF PERIMETER.
 2. ALL VENT PIPES, ETC. EXTENDING ABOVE ROOF SURFACE MUST BE PAINTED A COLOR THAT BLENDS WITH THE ROOF COLOR.

FINISH SCHEDULE		
A-1	FABRIC FINISH - GAMBELLA 'SPRICE' (M686) W/ 'OYSTER' (M642) AND 'NATURAL SLATE' (M684) ACCENT STRIPES - SEE ELEVATION DETAIL X04X-00X	TYPICAL
A-2	METAL CANOPY, PAINTED - ICI '834, 'METROPOLIS'	TYPICAL
B-1	BRICK - BORAL BRICKS, INC. 'WOODWARD BLEND' W/ HOLMAN PORTAR 'OLD BRICK TAN'	FACADE
B-2	BRICK - BORAL BRICKS, INC. 'WOODWARD BLEND' W/ HOLMAN PORTAR 'TODAY'	FACADE
CB-1	CEMENT BLOCK, PAINTED - ICI '663, 'COACH LANE' COPPER'	METAL REAR, TYPICAL
CB-1	CALCIUM SILICATE MASONRY UNIT - ARRSORCRAFT 'OLIVE' (DRESSED) (SMOOTH FINISH)	TYPICAL
GRF-1	FYPON 'MOLDED HILLTOP' OR EQUAL BALLUSTRACES AND COLPINS - TO MATCH ICI '908, 'WHITE HIGH-HIDING'	TYPICAL
E-1	EPS - DRYVIT 40, 'MARILLO WHITE' WITH SANDBLAST FINISH (FIELD COLOR)	FACADE
E-2	EPS - DRYVIT 538, 'BIGUE' WITH A SANDBLAST FINISH (FIELD COLOR)	FACADE
G-1	COPPER GUTTER AND DOWNSPOUTS PER BRAMA STANDARDS	TYPICAL
L-1	METAL LOUVERS, PAINTED - ICI '834, 'METROPOLIS'	TYPICAL
MC-1	REFINISHED METAL COPING COLOR TO MATCH ICI '908, 'WHITE HIGH-HIDING'	TYPICAL
MR-1	STANDING SEAM COPPER ROOF - COPPERCRAFT, DL-3 (OR EQUAL)	TYPICAL
PC-1	PINEAPPLE GROOVE MEDALLION - BUFF COLOR, STYLE TBD.	TYPICAL
PT-1	PANT - ICI '908, 'WHITE HIGH-HIDING'	TYPICAL
PT-2	PANT - ICI '834, 'METROPOLIS'	TYPICAL
PT-3	PANT - ICI '908, 'RUSTIC ADOBE'	BACK OF HOUSE BASE
PT-4	PANT - ICI '901 'CAMEL TAN'	BACK OF HOUSE
RF-1	SYNTHETIC SLATE ROOF - EGGERTAR 'MAESTIC SLATE (OR EQUAL)	TYPICAL
RF-1	METAL RAILING, PAINTED - ICI '908, 'WHITE HIGH-HIDING'	TYPICAL
SP-1	ALUM. STOREFRONT - KAMNEER 'BONE WHITE'	TYPICAL
SPU-1	WOOD STOREFRONT, PAINTED - ICI '908, 'WHITE HIGH-HIDING'	TYPICAL

05-SP-001
APPROVED
TOWN OF CARY
Approved by: [Signature] Date: 02/23/05
Planning: [Signature] Date: 02/23/05
Engineering: [Signature] Date: 2/1/05



NOTE: SEE 8 SERIES DRAWINGS FOR STOREFRONT 4 WINDOW ELEVATIONS.