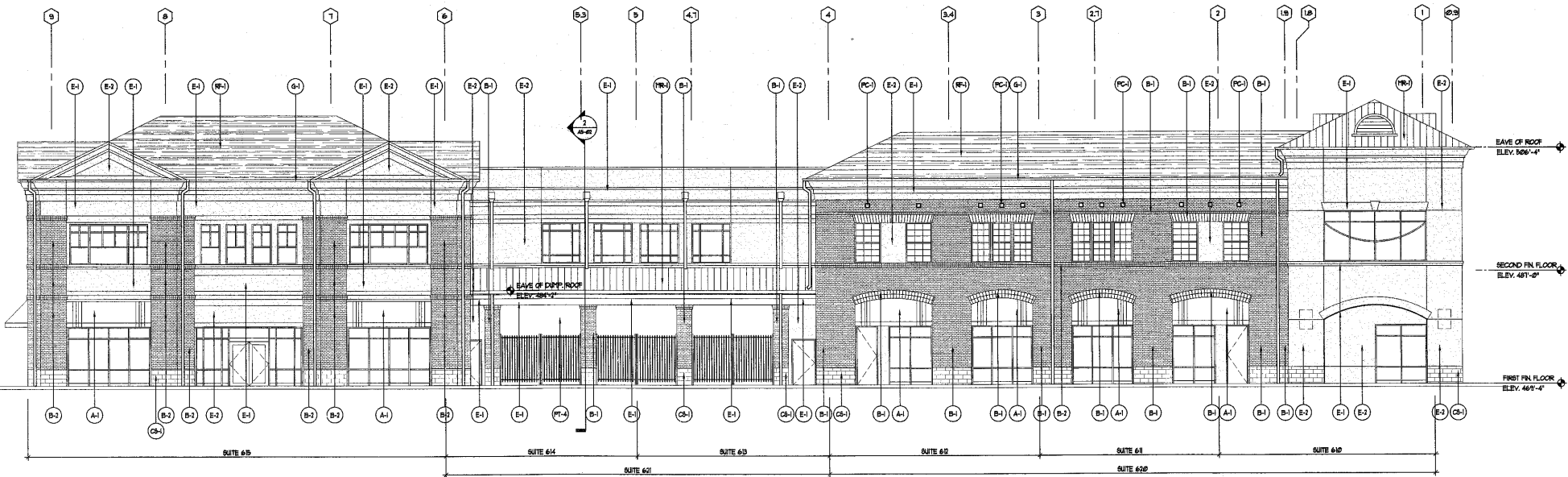


2 WEST ELEVATION
SCALE: 1/8" = 1'-0"

NOTES:
 1. ALL HVAC EQUIPMENT TO BE SCREENED BY HANDBAND ROOFS AT BLDG. ROOF PERIMETER.
 2. ALL VENT PIPES, ETC. EXTENDING ABOVE ROOF SURFACE MUST BE PAINTED A COLOR THAT BLENDS WITH THE ROOF COLOR.

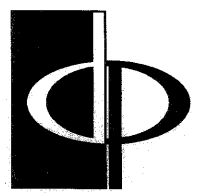
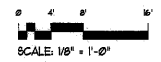
FINISH SCHEDULE		
A-1	FABRIC LINING - GAMBELLA 'SPRICE' (M656) W/ 'OYSTER' (M642) AND 'NATURAL WHITE' (M664) ACCENT STRIPES - SEE ELEVATION DETAIL 2000-00X	TYPICAL
A-2	METAL CANOPY, PAINTED - ICI '834, 'METROPOLIS'	TYPICAL
B-1	BRICK - BORAL BRICKS, INC. 'WOODWARD BLEND' W/ HOLMAN MORTAR 'OLD IRISH TAN'	FAÇADE
B-2	BRICK - BORAL BRICKS, INC. 'WOODWARD BLEND' W/ HOLMAN MORTAR 'ISSUE'	FAÇADE
CB-1	CEMENT BLOCK, PAINTED - ICI '843, 'COACH LAMP COPPER'	RETAIL, REAR, TYPICAL
CS-1	CALCIUM SILICATE MASONRY UNIT - ARRSORFAT 'SILVER' (DRESSED SMOOTH FINISH)	TYPICAL
GRF-1	PLYON 'GOLDEN YELLOW' OR EQUAL BALUSTRADES AND COLLINS - TO MATCH ICI '909, 'WHITE HIGH-HEDS'	TYPICAL
E-1	EPS - DRYVIT '83, 'MARILLO WHITE' WITH SANDBLAST FINISH (FIELD COLOR)	FAÇADE
E-2	EPS - DRYVIT '83, 'BIGUE' WITH A SANDBLAST FINISH (FIELD COLOR)	FAÇADE
G-1	COPPER GUTTER AND DOWNSPOUTS PER BRACMA STANDARDS	TYPICAL
L-1	'METAL LOVERS, PAINTED - ICI '834, 'METROPOLIS'	TYPICAL
MC-1	PREFINISHED METAL COPING, COLOR TO MATCH ICI '843, 'WATER CHESTNUT'	TYPICAL
MR-1	STANDING SEAM COPPER ROOF - COPPERCRAFT, DL-3 (OR EQUAL)	TYPICAL
PC-1	PINEAPPLE GROVE 'MADALLION - BUFF COLOR, STYLE 1242	TYPICAL
PT-1	PAINT - ICI '909, 'WHITE HIGH-HEDS'	TYPICAL
PT-2	PAINT - ICI '834, 'METROPOLIS'	TYPICAL
PT-3	PAINT - ICI '909, 'BUSTIC ADOBE'	BACK OF HOUSE BASE
PT-4	PAINT - ICI '827, 'CAMEL TAN'	BACK OF HOUSE
RF-1	SYNTHETIC SLATE ROOF - ECOSTAR, MARBETIC SLATE (OR EQUAL)	TYPICAL
RT-1	METAL RAILING, PAINTED - ICI '909, 'WHITE HIGH-HEDS'	TYPICAL
SF-1	ALUM. STOREFRONT - KANEER 'STONE WHITE'	TYPICAL
SRU-1	WOOD STOREFRONT, PAINTED - ICI '909, 'WHITE HIGH-HEDS'	TYPICAL

NOTE: SEE 3 SERIES DRAWINGS FOR STOREFRONT 4 WINDOW ELEVATIONS.



1 NORTH ELEVATION
SCALE: 1/8" = 1'-0"

05-SP-001
 APPROVED
 TOWN OF CARY
 Approved by: [Signature] Date: 2/2/05
 Planning: [Signature] Date: 2/2/05
 Engineering: [Signature] Date: 2/1/05



THE PRESTON PARTNERSHIP, LLC
 A MULTI-DISCIPLINARY DESIGN FIRM
 1000 ABERNATHY ROAD NE, SUITE 600
 ATLANTA, GEORGIA 30328
 TELEPHONE: 770 398 7248
 FAX: 770 398 2945
 WWW.THEPRESTONPARTNERSHIP.COM

CONSULTANT

SEAL



PROJECT
 THE ARBORETUM AT WESTON - PHASE II
 CARY, NORTH CAROLINA

FOR

PRESTON
 DEVELOPMENT
 COMPANY

ARBORETUM ASSOCIATES, LLC

REVISIONS

DATE: 21 FEBRUARY, 2005
 JOB NUMBER: 041470
 DRAWN BY: VN
 CHECKED BY: CLH
 DRAWING TITLE: BUILDING ELEVATIONS

DRAWING NUMBER

A4-02

COMMENTS
 SITE REVIEW SET - 2/21/05