

THE PRESTON PARTNERSHIP, LLC  
A MULTI-DISCIPLINARY DESIGN FIRM

1000 ABERNATHY ROAD NE, SUITE 600  
ATLANTA, GEORGIA 30328  
TELEPHONE: 770 396 7240  
FAX: 770 396 2945

WWW.THEPRESTONPARTNERSHIP.COM

CONSULTANT

SEAL



PROJECT  
THE ARBORETUM AT  
WESTON - PHASE II  
CARY, NORTH CAROLINA

FOR

**PRESTON**  
DEVELOPMENT  
COMPANY

ARBORETUM ASSOCIATES,  
LLC

REVISIONS

DATE DECEMBER 23, 2004

JOB NUMBER 0315103

DRAWN BY VN

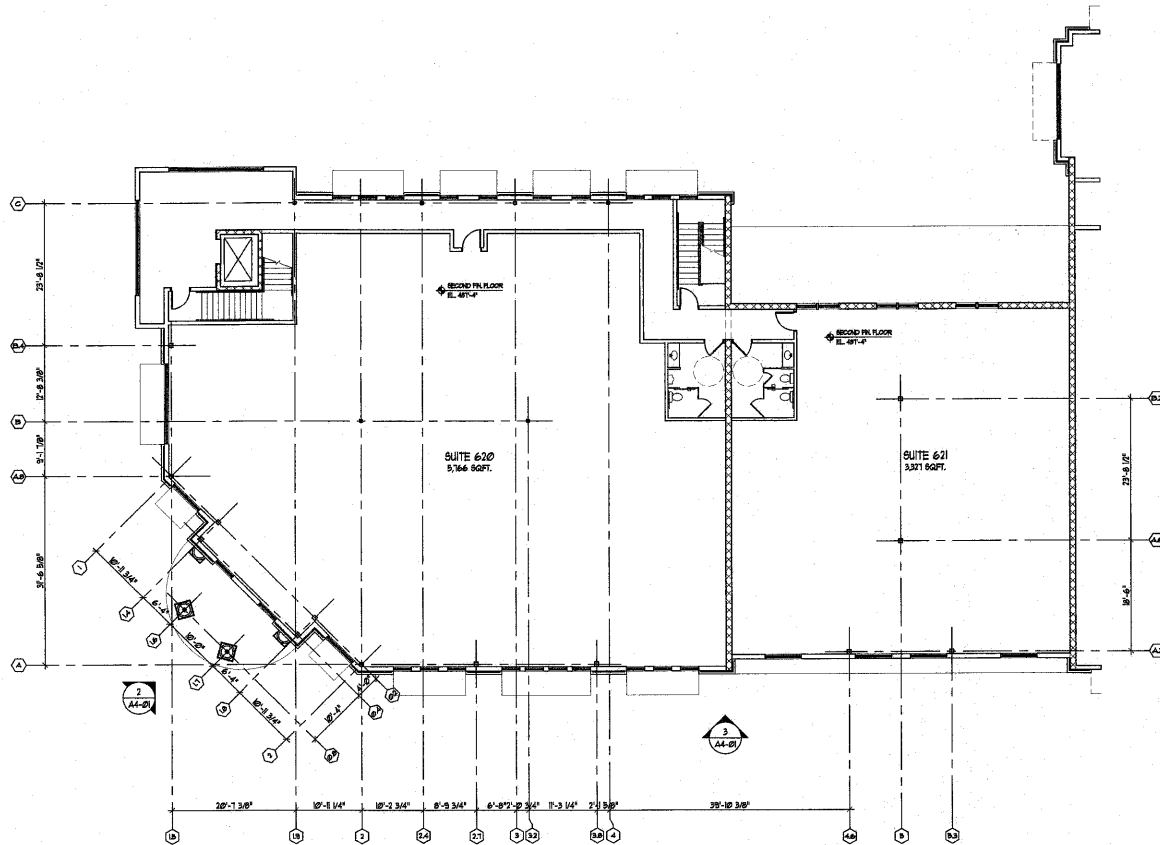
CHECKED BY CLH


DRAWING TITLE  
**2ND LEVEL FLOOR PLAN**

DRAWING NUMBER


A1-02

COMMENTS



 PROJECT NORTH  
**2ND LEVEL FLOOR PLAN**  
SCALE: 3/32" = 1'-0"

05-SP-001  
APPROVED  
TOWN OF CARY  
DRC DR Date 06/20/05  
Planning TR Date 06/20/05  
Engineering IS Date 7-1-05

  
SCALE: 3/32" = 1'-0"