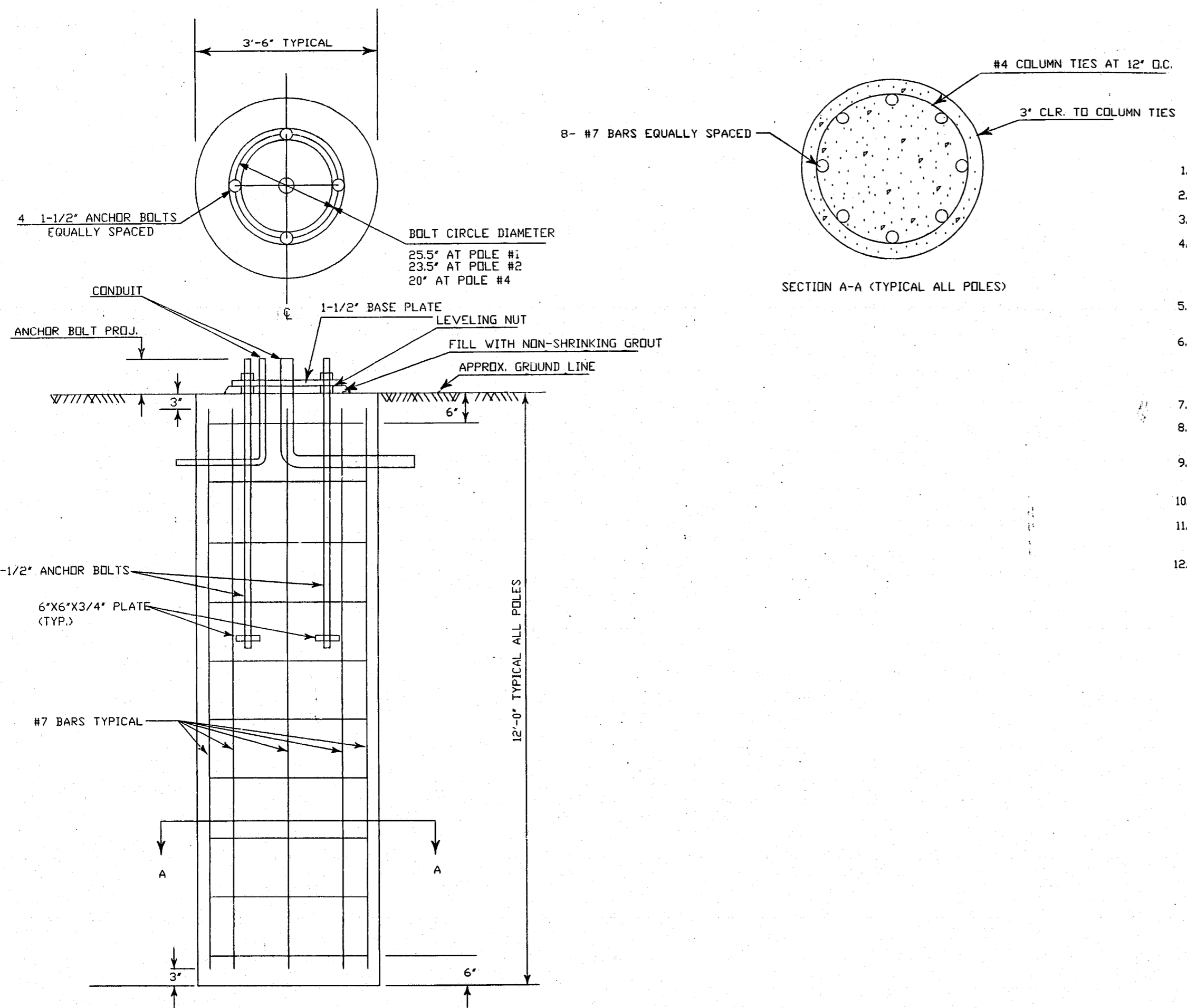


STATE	PROJECT NO.	SHEET NO.	TOTAL SHEETS
N.C.			
F.A. PROJ. NO.			
PROJECT ID NO.			



NOTES


1. CONCRETE SHALL BE CLASS "A".
2. REINFORCING STEEL SHALL CONFORM TO THE REQUIREMENT OF ASTM A-615, GRADE 60.
3. CONCRETE SHALL BE CAST AGAINST UNDISTURBED SOIL.
4. IF SHORING IS USED IN CONJUNCTION WITH EXCAVATION TO KEEP SOIL FROM COLLAPSING, IT SHALL BE 3'-6" DIAMETER SMOOTH STEEL PIPE RETRACTED AS CONCRETE IS CAST. OPERATIONS SHALL BE CONDUCTED IN A MANNER THAT ALLOWS NO WATER TO ACCUMULATE IMMEDIATELY BEFORE AND DURING THE CASTING OPERATION.
5. THE TRAFFIC SIGNAL STRUCTURE SHALL NOT BE ERECTED BEFORE THE CONCRETE IN THE FOUNDATION HAS ATTAINED A MINIMUM COMPRESSIVE STRENGTH OF 3000 PSI.
6. NON-SHRINKING GROUT SHALL BE A MIX CONSISTING OF ONE PART CEMENT AND THREE PARTS CONCRETE SAND BY WEIGHT AND TWO GRAMS OF ALUMINUM POWDER PER 94 POUNDS OF CEMENT USED. WATER SHALL BE LIMITED TO THAT AMOUNT REQUIRED TO PRODUCE A WORKABLE SLUMP.
7. PROVISIONS SHALL BE MADE FOR DRAINAGE OF WATER FROM INSIDE THE METAL SUPPORT.
8. ANCHOR BOLT PROJECTION AND BOLT CIRCLE DIAMETER SHALL BE DERIVED FROM APPROVED DRAWINGS SHOWING POLE DETAILS.
9. FOR OTHER DETAILS REGARDING CONSTRUCTION OF THE CONCRETE FOUNDATION, SEE PROJECT SPECIAL PROVISIONS.
10. REFER TO SECTION 12 OF THE 1980 TRAFFIC SIGNAL SPECIFICATIONS.
11. REFER TO THE 1985 AASHTO STRUCTURAL GUIDELINES WITH THE LATEST INTERIMS (THROUGH 1989 OR LATER).
12. USE 25 YEAR WIND MAP AS MINIMUM.

NOTE: ALL DATA TAKEN FROM CALCULATIONS SUPPLIED BY ATLANTIC TECHNICAL SALES.

PRELIMINARY
NOT FOR CONSTRUCTION

98-SP-183
APPROVED
2/2/99
JFP 2/2/99

Ramey Kemp & Associates
Engineers
4928-A Windy Hill Drive Raleigh, NC 27609
(919) 872-5115 fax (919) 878-5416

SR 3090 (WESTON PKWY) AT SR 3091 (HARRISON BLVD.)		SEAL 
DIV. 5	CARY	WAKE CO.
REVISIONS	INIT.	DATE
SIGNATURE		DATE
		8-30-99
SCALE: NONE		DATE: 11/11/98
PREPARED BY: CET		
REVIEWED BY: RFK		
REVIEWED BY:		
S/G DIV. NO.		12-1589

N.C. DEPARTMENT OF TRANSPORTATION
DIVISION OF HIGHWAYS
TRAFFIC ENGINEERING BRANCH