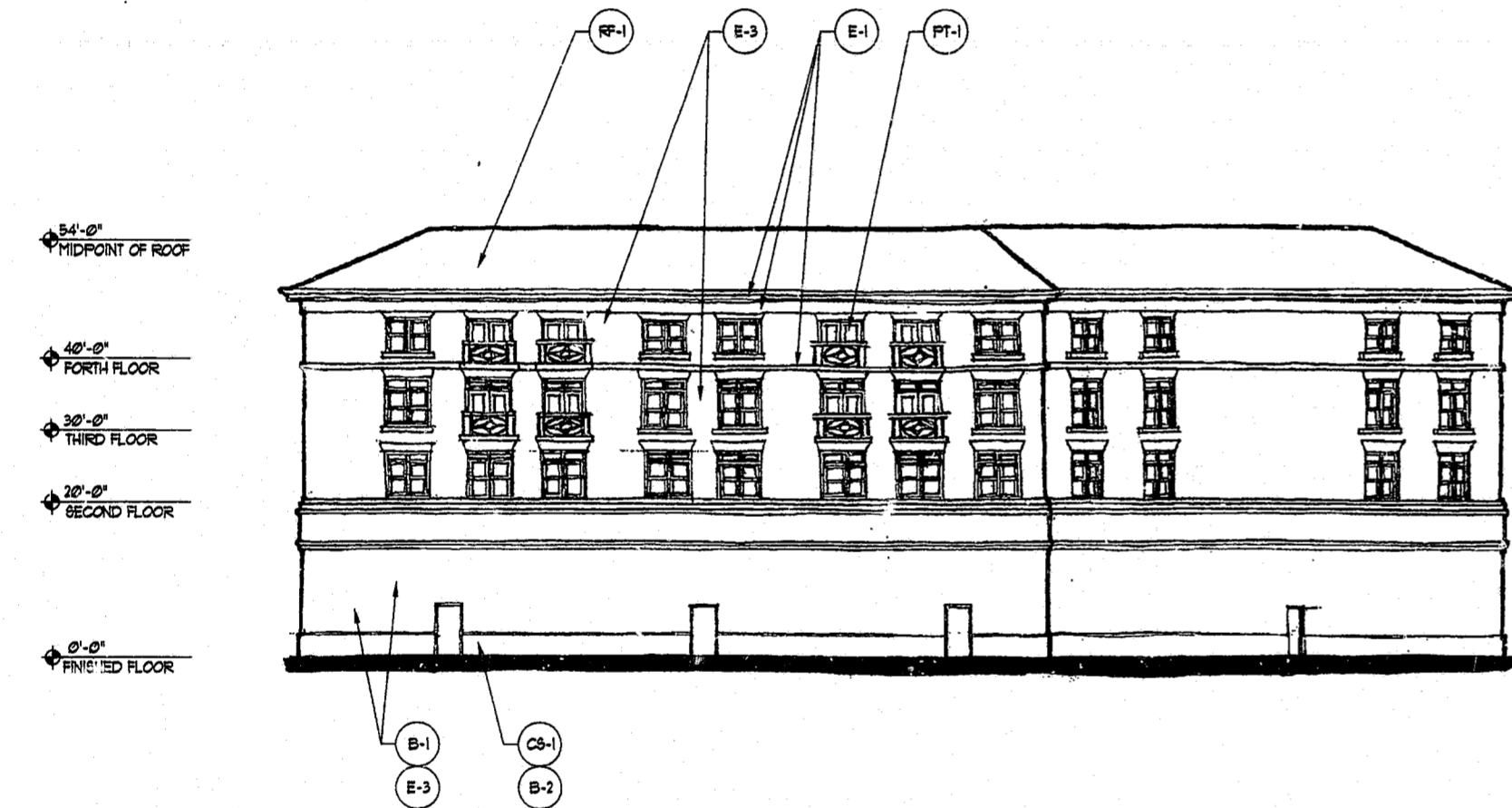
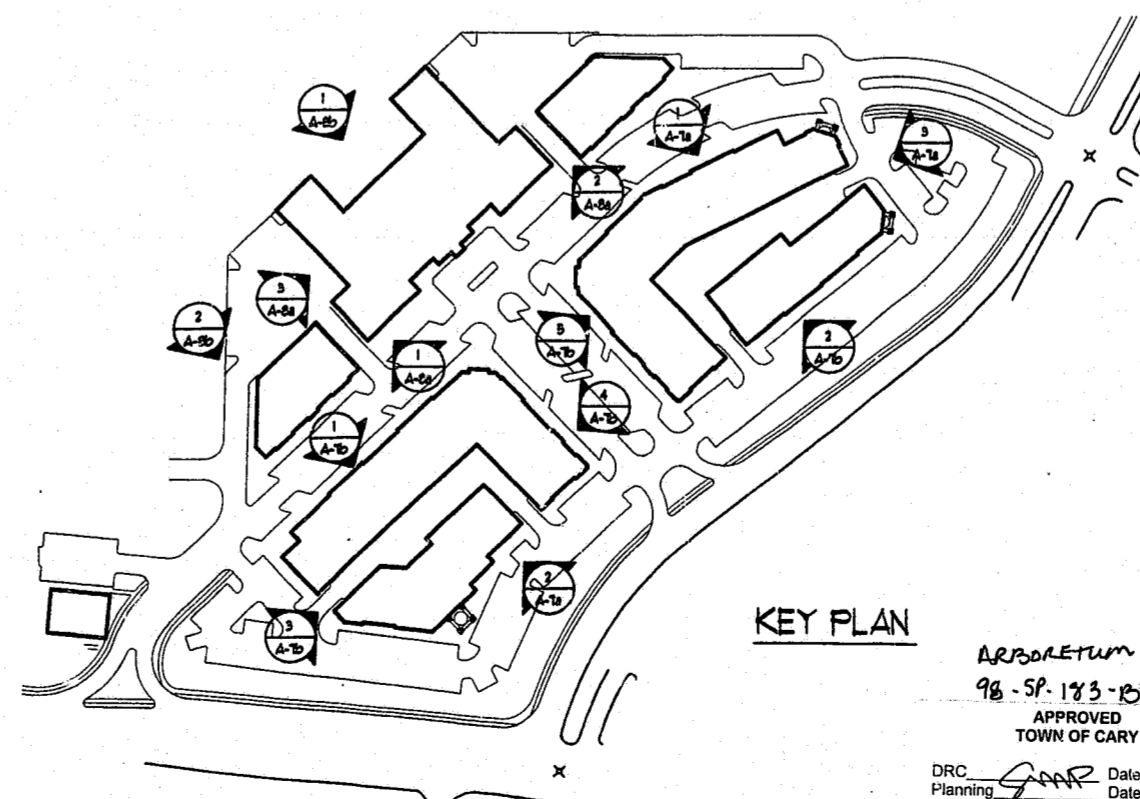


1 ELEVATION - HOTEL
A-8b SCALE: 1/16" = 1'-0"



2 ELEVATION - APARTMENTS
A-8b SCALE: 1/16" = 1'-0"

54'-0" MIDPOINT OF ROOF
40'-0" FORTH FLOOR
30'-0" THIRD FLOOR
20'-0" SECOND FLOOR
0'-0" FINISHED FLOOR

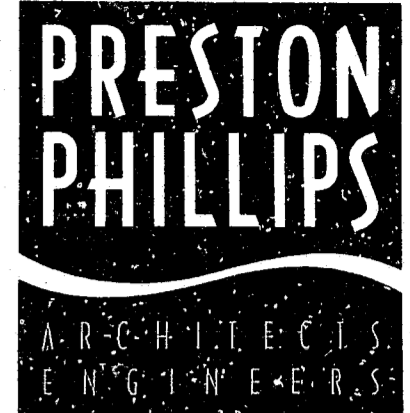


ARBORETUM
98-5P-193-15
APPROVED
TOWN OF CARY
DRC. Planning Date 10/10/01

FINISH SCHEDULE		
A-1	FABRIC FINISH - SUNBRELLA 'SPRICE' (M656) W/ 'OYSTER' (M642) AND 'NATURAL WHITE' (M604) ACCENT STRIPES - SEE COLOR BOARD	TYPICAL
A-2	METAL CANOPY, PAINTED - ICI #34, 'METROPOLIS'	TYPICAL
B-1	BRICK - GLEN-GERY 'OLDE DETROIT'	TYPICAL
B-2	BRICK - ACME BRICK 'STEEL GREY'	ACCENT/ALTERNATE
CB-1	CEMENT BLOCK, PAINTED - ICI #63, 'COACH LAMP COPPER'	RETAIL REAR TYPICAL
CS-1	CAST STONE - ARRSACRAFT 'OLIVE'	TYPICAL
GRF-1	GRF BALUSTRADES AND COLLARS - TO MATCH DRYVIT #3, 'AMARILLO WHITE'	TYPICAL
E-1	ERS - DRYVIT #3, 'AMARILLO WHITE' WITH A SANDBLAST FINISH (FIELD COLOR)	TYPICAL
E-2	ERS - DRYVIT #20A, 'CLOVER' WITH A SANDBLAST FINISH (TRIM/ACCENT COLOR)	OPTIONAL
E-3	ERS - DRYVIT #38, 'BIQUE' WITH A SANDBLAST FINISH (FIELD COLOR)	TYPICAL
JB-1	JUNCTION BOX - SEE SECTIONS AND ELECTRICAL DRAWINGS	
L-1	METAL LOUVERS, PAINTED - ICI #34, 'METROPOLIS'	TYPICAL
MC-1	METAL COPING, PAINTED - ICI #48, 'WATER CHESTNUT'	TYPICAL
MC-2	METAL COPING, PAINTED - ICI #01, 'SAHARA'	OPTIONAL
MR-1	STANDING SEAM METAL ROOF - BERRIDGE 'HEMLOCK GREEN'	TYPICAL
PT-1	PAINT - ICI #203, 'WHITE HIGH-HIDING'	TYPICAL
PT-2	PAINT - ICI #55, 'AMERICAN EAGLE'	OPTIONAL
PT-3	PAINT - ICI #33, 'NEW ENGLAND GREEN'	OPTIONAL
PT-4	PAINT - ICI #48, 'WATER CHESTNUT'	OPTIONAL
PT-5	PAINT - ICI #34, 'METROPOLIS'	TYPICAL
PT-6	PAINT - DURON AC40N, 'NIGHT MISSION'	OPTIONAL
RF-1	SHINGLE ROOF - GAP TYPESLINE 'SLATE BLEND'	TYPICAL
SF-1	METAL STOREFRONT - KAWNEER 'BONE WHITE'	TYPICAL
SF-2	METAL STOREFRONT - KAWNEER 'ANTIQUE BRONZE'	OPTIONAL
SF-3	METAL STOREFRONT - KAWNEER 'HARTFORD GREEN'	OPTIONAL
SFU-1	WOOD STOREFRONT, PAINTED - ICI #203, 'WHITE HIGH-HIDING'	TYPICAL
SFU-2	WOOD STOREFRONT, PAINTED - ICI #55, 'AMERICAN EAGLE'	OPTIONAL
SFU-3	WOOD STOREFRONT, PAINTED - ICI #33, 'NEW ENGLAND GREEN'	OPTIONAL

NOTE:
1 WHERE TWO MATERIAL TAGS APPEAR, EITHER MATERIAL COULD BE USED.

GENERAL NOTE:
1 NO MORE THAN FOUR FLOORS SHALL BE HABITABLE.
2 THE BUILDING ELEVATIONS MAY VARY DEPENDING UPON SPECIFIC TENANT REQUIREMENTS, WITHIN THE LIMITATIONS OF THE PLANNED UNIT DEVELOPMENT. ALL MODIFICATIONS TO THE BUILDING ELEVATIONS SHALL BE SUBMITTED TO THE TOWN OF CARY FOR APPROVAL PRIOR TO CONSTRUCTION.
3 THE PROJECT SHALL BE LIMITED TO THE COLORS INDICATED ON THE FINISH SCHEDULE EXCEPT FOR ACCENT COLORS AS ALLOWED BY THE TOWN OF CARY DEVELOPMENT GUIDELINES.
4 REFER TO 'NOTED' BUILDING ELEVATIONS FOR TYPICAL MATERIALS AND FINISHES AS WELL AS TYPICAL BUILDING HEIGHTS.



THE PRESTON PHILLIPS PARTNERSHIP INC.
9000 CENTRAL PARK WEST, SUITE 100
ATLANTA, GEORGIA 30328
TEL 770 396 8752 FAX 770 396 4767

A GEORGIA CORPORATION

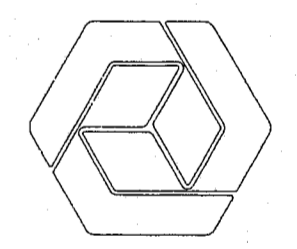
CONSULTANT _____

SEAL _____

PROJECT _____

THE ARBORETUM
CARY, NORTH CAROLINA

BY _____



COUSINS PROPERTIES, INC.
2502 WINDY RIDGE PARKWAY
SUITE 1000
ATLANTA, GEORGIA 30338
TEL: (770) 955-2200
FAX: (770) 955-2363

REVISIONS _____

DATE FEBRUARY 17, 2001

JOB NUMBER 2000106

DRAWN BY MHRG

CHECKED BY MG

DRAWING TITLE ELEVATIONS HOTEL

DRAWING NUMBER _____

A-8b

COMMENTS _____

SITEPLAN SUBMITTAL