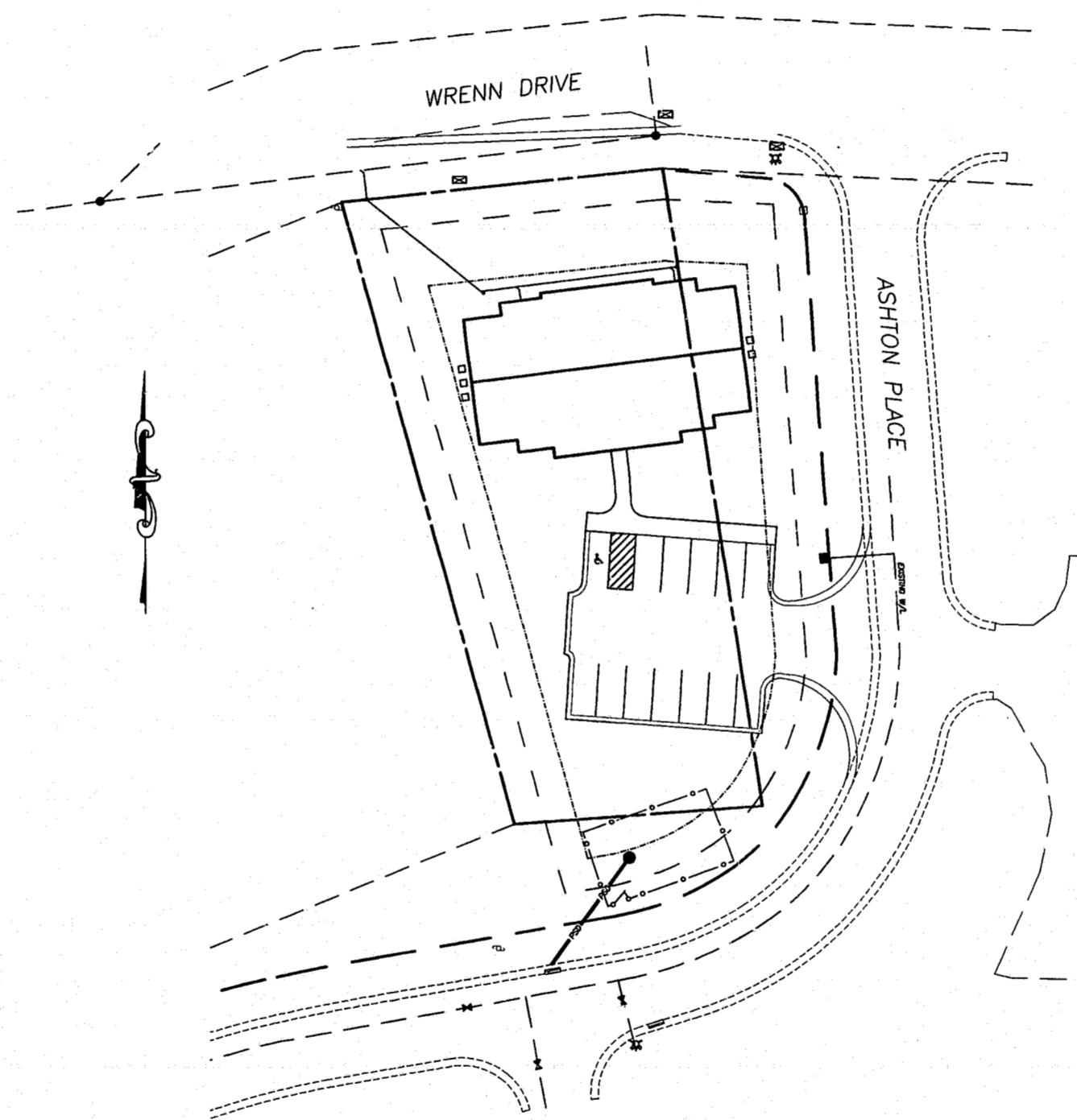
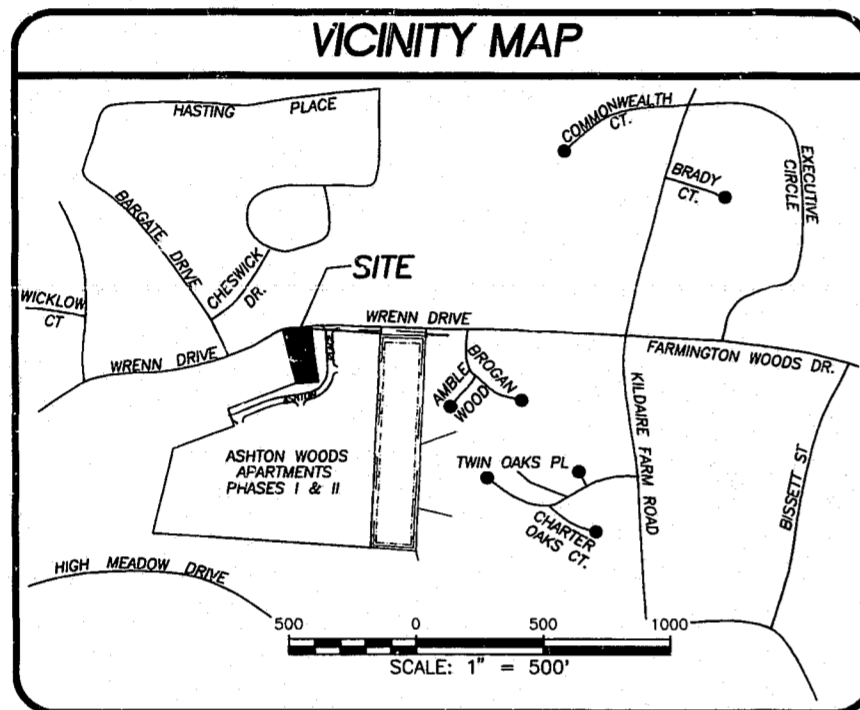



SITE IMPROVEMENTS FOR ASHTON WOODS APARTMENTS PHASE III CARY, N.C.



INDEX OF SHEETS	
SITE PLAN	SHEET 1
UTILITY, GRADING & EROSION CONTROL PLAN	SHEET 2
LANDSCAPE PLAN	SHEET 3
DETAILS	SHEET 4
LIGHTING PLAN	SHEET 5

LEGEND		
DESCRIPTION	EXISTING	PROPOSED
2' CONTOUR INTERVAL	- - - - -	- - - - -
10' CONTOUR INTERVAL	- - - - -	- - - - -
PROPERTY LINE	- - - - -	- - - - -
ROADWAY CENTERLINE	- - - - -	- - - - -
RIGHT OF WAY LIMITS	- - - - -	- - - - -
EASEMENT LINE	- - - - -	- - - - -
CURB & GUTTER	- - - - -	- - - - -
SANITARY SEWER FACILITIES	- - - - -	- - - - -
STORM SEWER FACILITIES	- - - - -	- - - - -
WATERLINE	- - - - -	- - - - -
FIRE HYDRANT ASSEMBLY	- - - - -	- - - - -
FENCING STRUCTURE	- - - - -	- - - - -
WOODSLINE	- - - - -	N/A
WATERWAYS	- - - - -	N/A
SILT FENCING	N/A	- - - - -



PREPARED BY:
WITHERS & RAVENEL, P.A.
CONSULTING ENGINEERS
1140 EXECUTIVE CIRCLE, SUITE D
CARY, NORTH CAROLINA 27511
TELEPHONE: OFFICE (919) 467-8800
FAX No. (919) 467-0000

SP-301-AD-95
APPROVED
DRC & RML:DIR:1
4-2-95
1207

APPROVED
DATE: 4-2-96
BY: JH Tucker
TOWN OF CARY
ENGINEERING DEPARTMENT

OWNER

RALPH & DAPHNE ASHWORTH
P.O. BOX 98
CARY, N.C. 27511

"official approved plan"