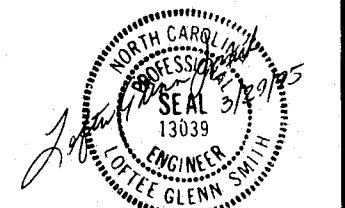
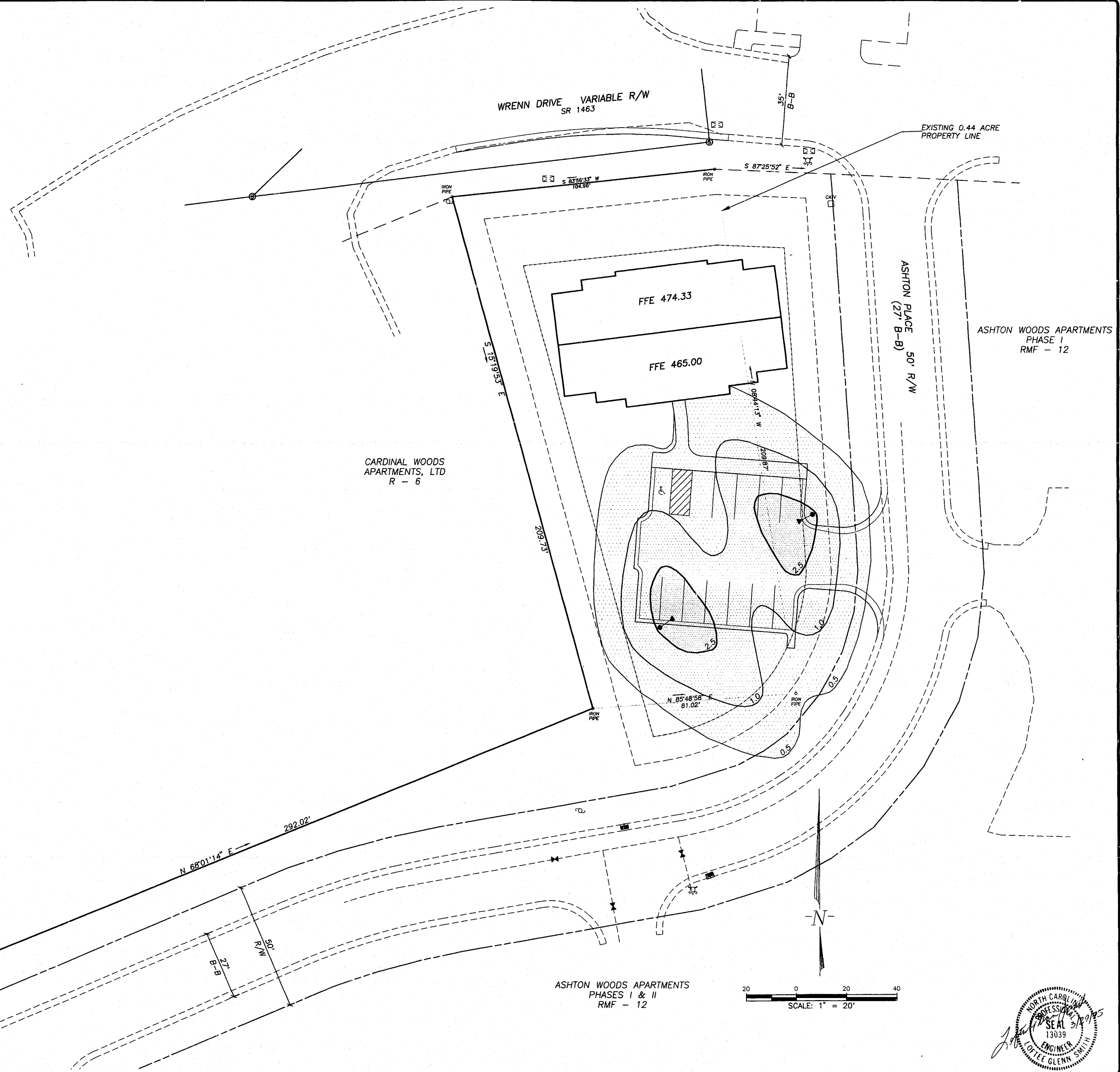


NOTES

1. SITE LIGHTING TO BE CONSTRUCTED, OWNED AND MAINTAINED BY CP&L.
2. TWO 25' TALL WOOD POLES WILL BE INSTALLED AS SHOWN WITH 200 WATT HIGH PRESSURE SODIUM ENCLOSED LUMINAIRES.
3. POLES AND FIXTURES WILL MATCH THE EXISTING LIGHTING IN PHASES I & II.



Withers & Ravenel
 Engineering and Surveying, Inc.
 1149 Executive Circle, Cary, NC 27511 Phone: 919-469-3340 Fax: 919-467-6008

Revisions			
No.	Description	Date	By
1	REVISED PER T.O.C. 1st REVIEW	2/17/95	ATB

**ASHTON WOODS APARTMENTS
 PHASE III**

LIGHTING PLAN

Designer LGS	Scale 1" = 20'
Drawn By ATB	Date 2/17/95
Checked By LGS	Job No. 94108

CAD File P\94108\SHTS
Sheet No. 5 of 5