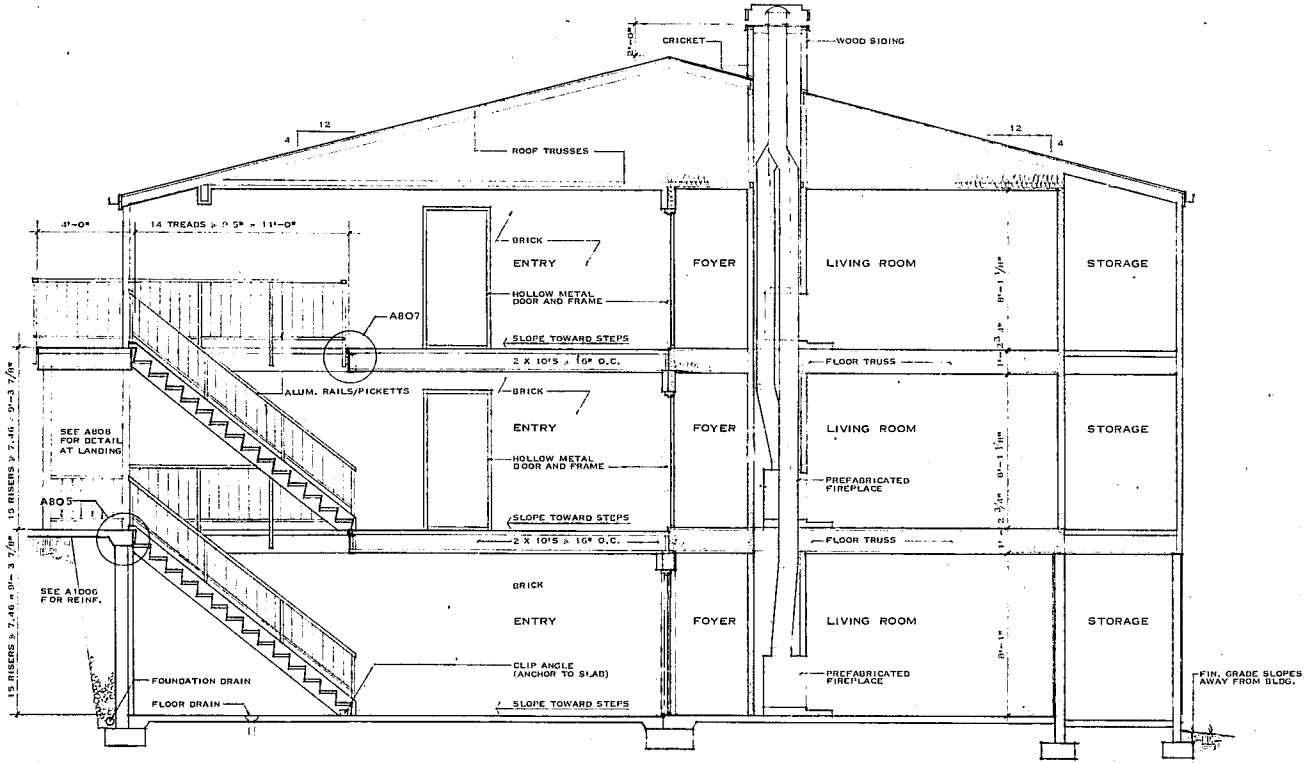
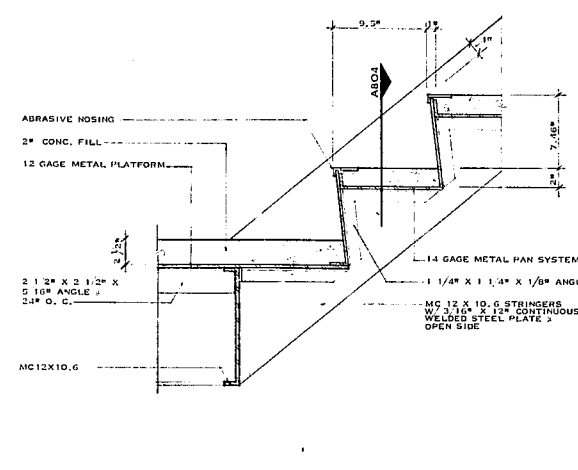


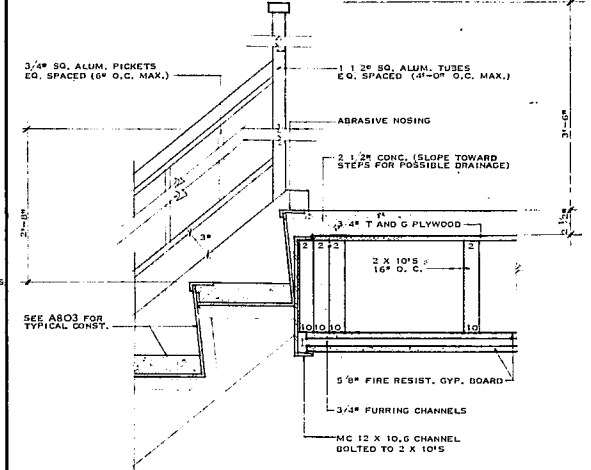
**section 01**  
SCALE - 1/4" = 1'-0"



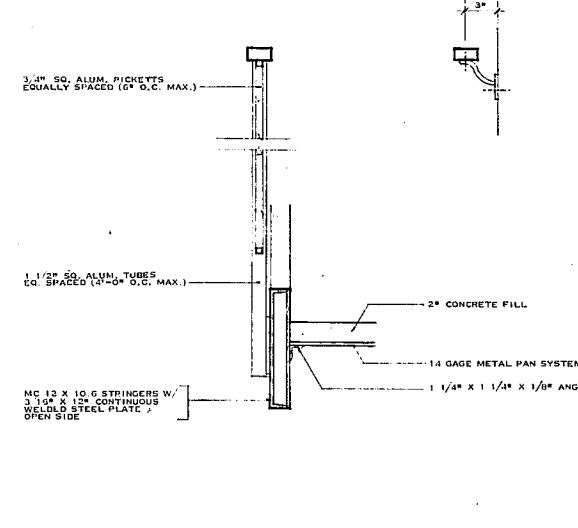
**section 02**  
SCALE - 1/4" = 1'-0"



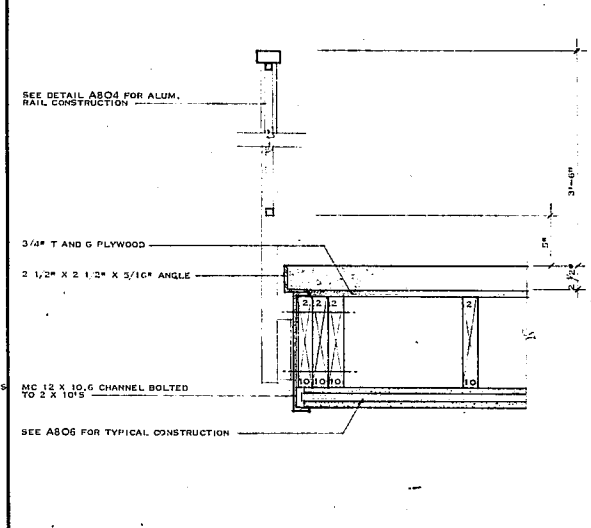
**detail 03**  
SCALE - 1 1/2" = 1'-0"



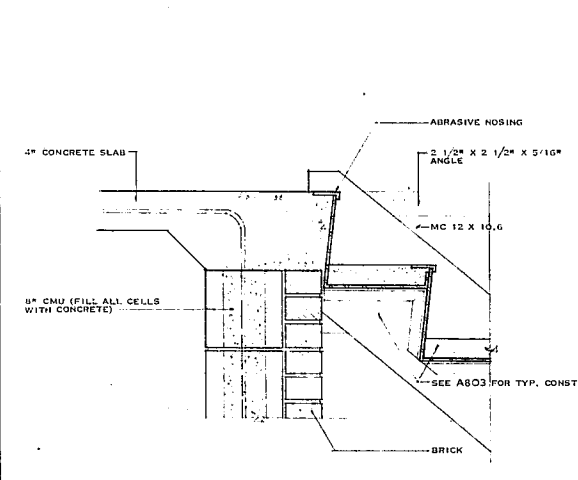
**detail 06**  
SCALE - 1 1/2" = 1'-0"



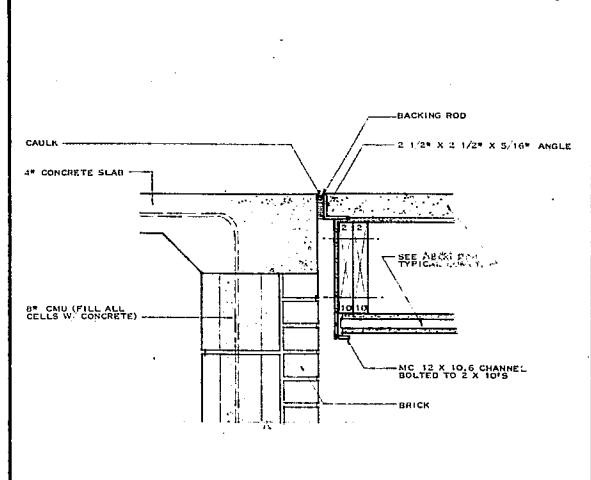
**detail 04**  
SCALE - 1 1/2" = 1'-0"



**detail 07**  
SCALE - 1 1/2" = 1'-0"



**detail 05**  
SCALE - 1 1/2" = 1'-0"



**detail 08**  
SCALE - 1 1/2" = 1'-0"



revisions  
REVISIONS: MARCH 2, 1981

**atai**

**architects fred tolson associates inc**  
3303  
parkway driving  
suite 200  
raleigh, n. c. 27609 919-876-6400

project  
ASHTON WOODS APARTMENTS  
owner  
ASHTON WOODS ASSOCIATES  
location  
CARY, N. C.

job number  
8002-04  
drawn by  
ATAI  
date  
NOVEMBER 1980

BUILDING SECTIONS AND STAIR DETAILS

ISSUED FOR CONSTRUCTION  
MARCH 2, 1981

SHEET NUMBER  
**A8**  
OF 12 SHEETS

THIS DOCUMENT IS THE PROPERTY OF ARCHITECTS FRED TOLSON ASSOCIATES, INC. TO REUSE THIS DOCUMENT FOR ANY PURPOSE OTHER THAN THE EXECUTION OF THE ABOVE TITLED PROJECT IS PROHIBITED WITHOUT PRIOR WRITTEN PERMISSION OF THE ARCHITECT. RETURN ALL COPIES TO THE ARCHITECT UPON REQUEST.