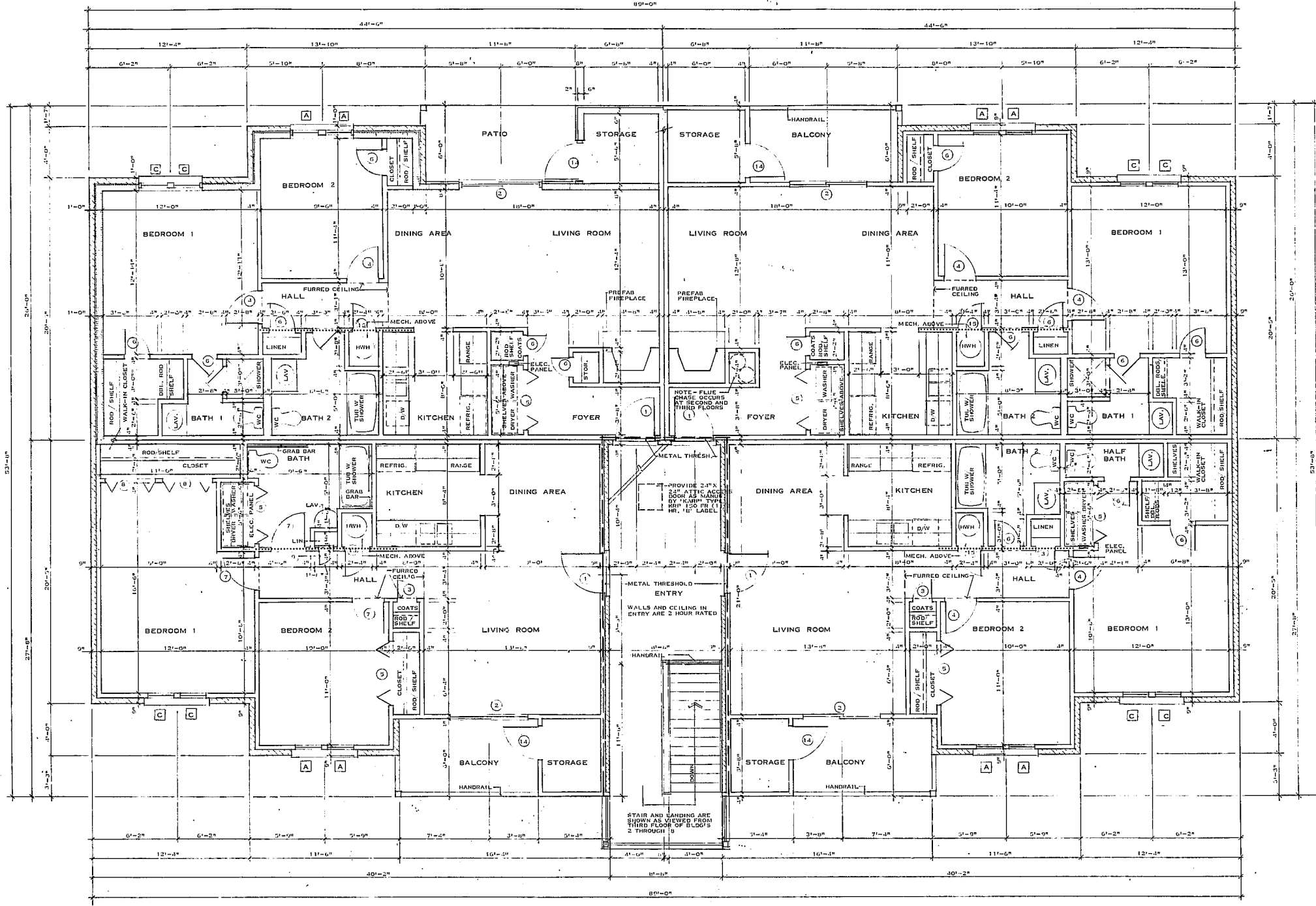


**UNIT B**  
TWO BEDROOM  
(BASEMENT)

**UNIT B**  
TWO BEDROOM



**UNIT A**  
TWO BEDROOM  
(HANDICAP)

**UNIT A**  
TWO BEDROOM

**floor plan 01**  
SCALE = 1/4" = 1'-0"

KITCHEN APPLIANCE SCHEDULE					
ITEM	QUANTITY	MANUFACTURER AND MODEL		ELECTRICAL	OTHER
DISHWASHER	1 EACH KITCHEN	GENERAL ELECTRIC	6694DDW	115V	
DROP-IN RANGE (HANDICAP ONLY)	1 EACH KITCHEN	GENERAL ELECTRIC	JMP26	240/2	SELF-CLEANING, PORCELAIN TOP
RANGE HOOD	1 EACH RANGE	GENERAL ELECTRIC	JV330	115V	VENTED TYPE
FREE STANDING RANGE	1 EACH KITCHEN (EXCEPT HANDICAP)	SEARS KENMORE	SERIES 516 - 30"		
DISPOSAL	1 EACH KITCHEN SINK UNIT	GENERAL ELECTRIC	JBC16	240/2	CONTINUOUS CLEAN
		SEARS KENMORE	63091	115V	
REFRIGERATOR	1 EACH KITCHEN	IN-SINK-ERATOR,	1/3 HP	115V	
		GENERAL ELECTRIC	TDF-16AA	115V	15.7 CU FT, NO-FROST
		SEARS KENMORE	60061		15.1 CU FT, NO-FROST

NOTE  
SEE LANDSCAPE DRAWINGS FOR FINISHED FLOOR ELEVATIONS

NOTE  
SEE FOUNDATION PLANS FOR DIMENSION CHANGES WHEN BUILDINGS ARE CONNECTED AND A FIREWALL OCCURS BETWEEN THEM

INDICATES BEARING WALL  
SEE A1001 FOR SIM. CONSTRUCTION

INDICATES 2 HOUR FIREWALL



revisions  
REVISED MARCH 2, 1981

**atai**

**architects**  
fred tolson associates inc  
suite 200  
3501 executive drive  
raleigh, n. c. 27609 919-876-8400

project  
ASHTON WOODS APARTMENTS  
owner  
ASHTON WOODS ASSOCIATES  
location  
CARY, N. C.

job number  
8002-04  
drawn by  
ATAI  
date  
NOVEMBER 1980

UNIT FLOOR PLANS

ISSUED FOR CONSTRUCTION  
MARCH 2, 1981

SHEET NUMBER  
**A1**  
OF 12 SHEETS

THIS DOCUMENT IS THE PROPERTY OF ARCHITECTS FRED TOLSON ASSOCIATES, INC. TO REUSE THIS DOCUMENT FOR ANY PURPOSE OTHER THAN THE EXECUTION OF THE ABOVE TITLED PROJECT IS PROHIBITED WITHOUT PRIOR WRITTEN PERMISSION OF THE ARCHITECT. RETURN ALL COPIES TO THE ARCHITECT UPON REQUEST.