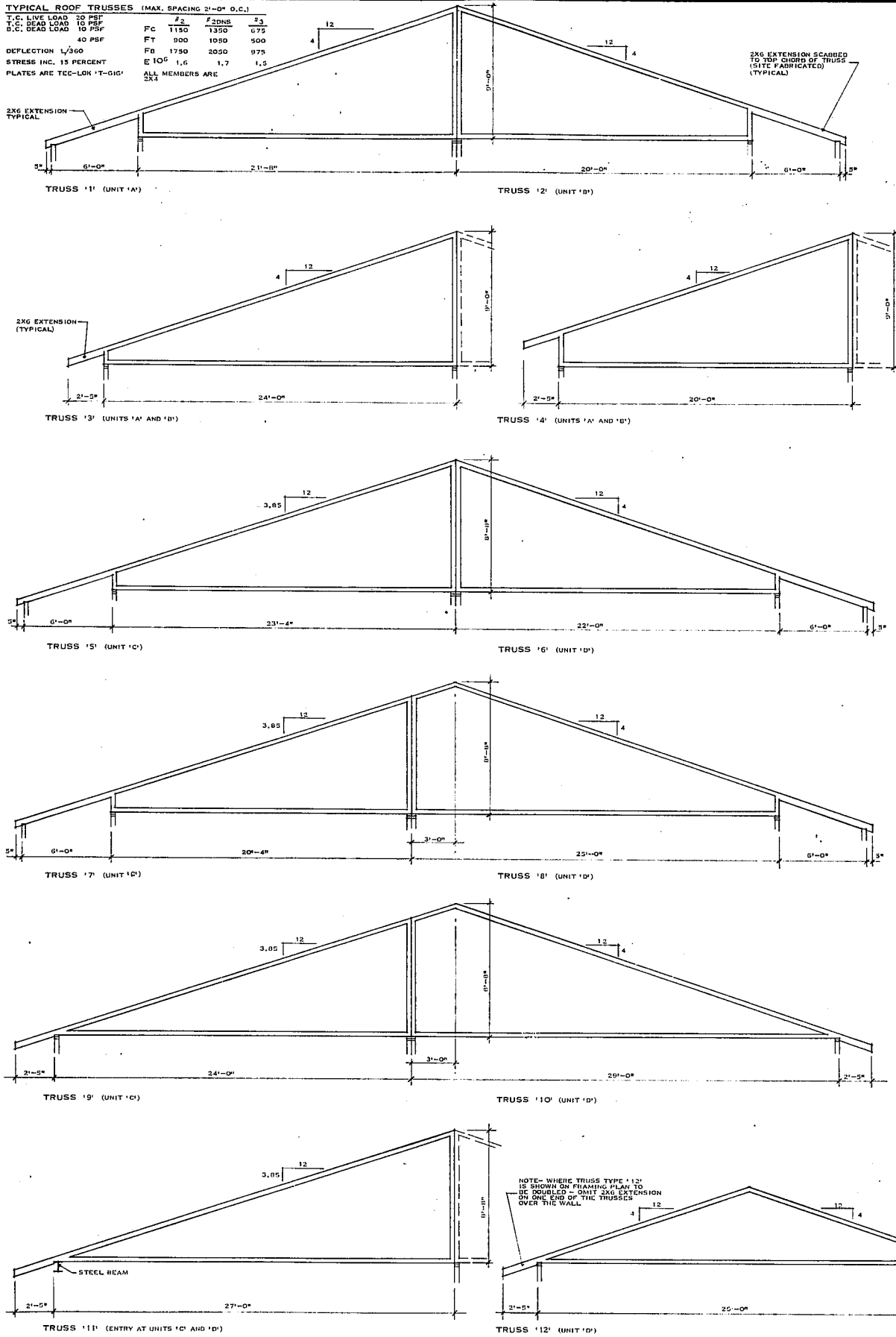


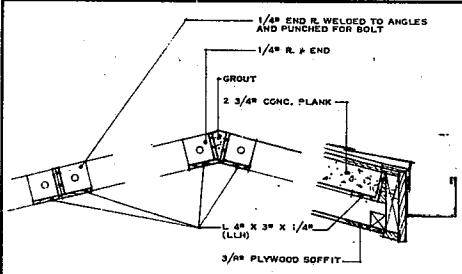
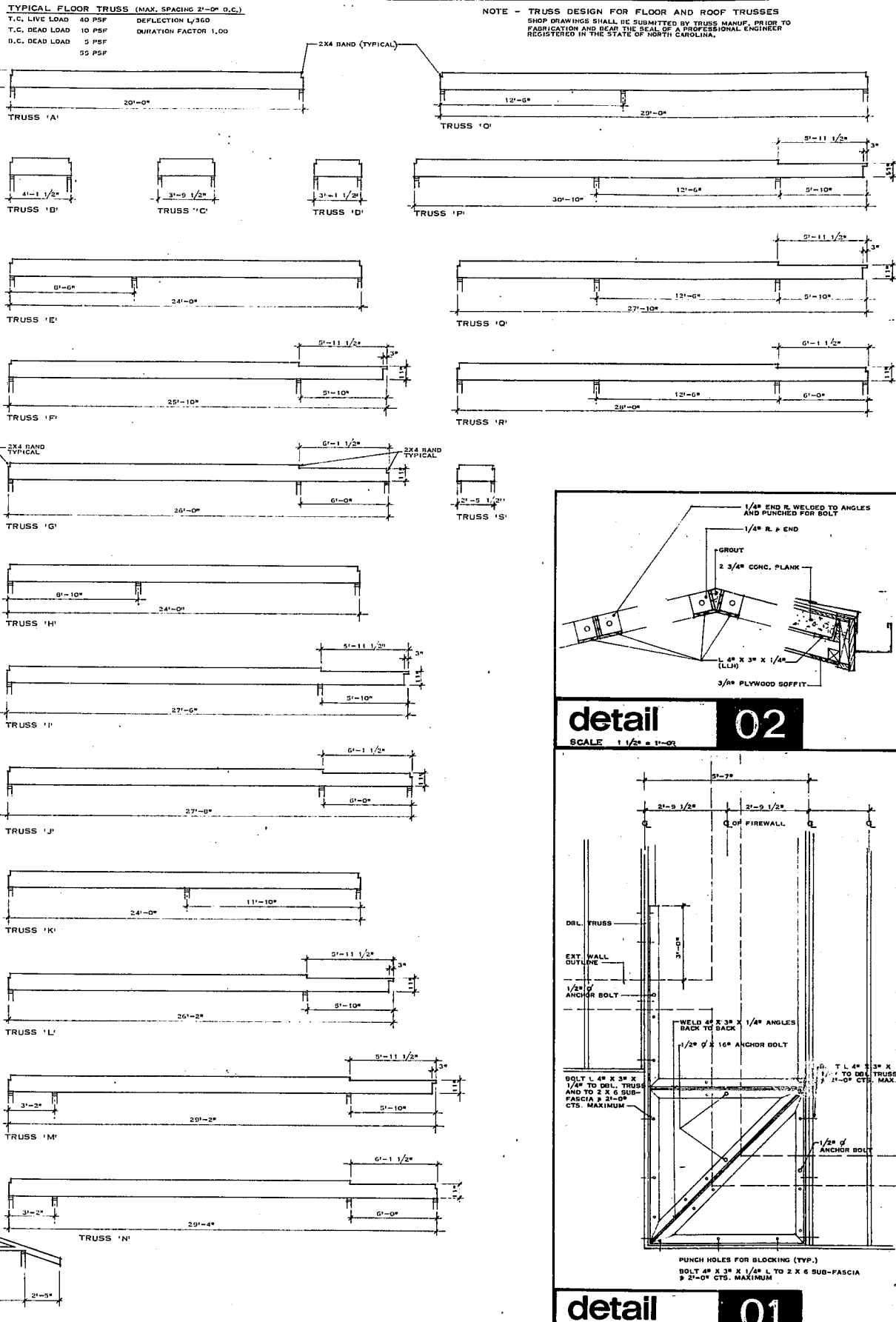
TYPICAL ROOF TRUSSES (MAX. SPACING 2'-0" O.C.)

T.C. LIVE LOAD TO REST	2	3
T.C. DEAD LOAD 10 PSF	1150	1350
D.C. DEAD LOAD 10 PSF	40	50
DEFLECTION L/360	1750	2050
STRESS INC. 15 PERCENT	1.6	1.7
PLATES ARE TEC-LOK 'T-010'		

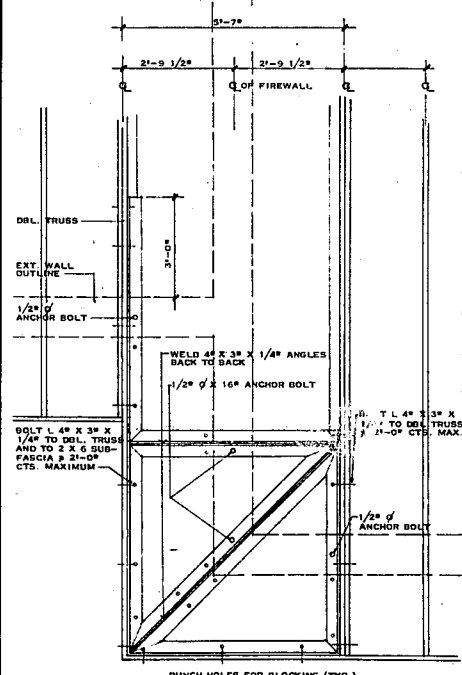


TYPICAL FLOOR TRUSS (MAX. SPACING 2'-0" O.C.)

T.C. LIVE LOAD 40 PSF	DEFLECTION L/360
T.C. DEAD LOAD 10 PSF	DURATION FACTOR 1.00
D.C. DEAD LOAD 5 PSF	
	55 PSF



**detail 02**  
SCALE 1 1/2\"/>



**detail 01**  
SCALE 1/2\"/>



revisions  
REVISED MARCH 2, 1981

**atai**

architects  
fred tolson associates inc  
suite 200 3301 executive drive  
raleigh, n. c. 27609 919-876-8400

project  
ASHTON WOODS APARTMENTS  
owner  
ASHTON WOODS ASSOCIATES  
location  
CARY, N. C.

job number  
8002-04  
drawn by  
ATAI  
date  
NOVEMBER 1980

TRUSS PROFILES  
ISSUED FOR CONSTRUCTION  
MARCH 2, 1981

SHEET NUMBER  
**S5**  
OF 6 SHEETS

THIS DOCUMENT IS THE PROPERTY OF ARCHITECTS FRED TOLSON ASSOCIATES, INC. TO REUSE THIS DOCUMENT FOR ANY PURPOSE OTHER THAN THE EXECUTION OF THE ABOVE TITLED PROJECT IS PROHIBITED WITHOUT PRIOR WRITTEN PERMISSION OF THE ARCHITECT.