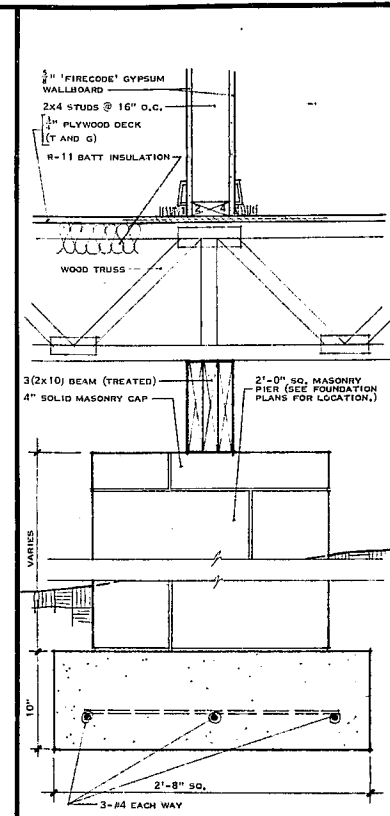


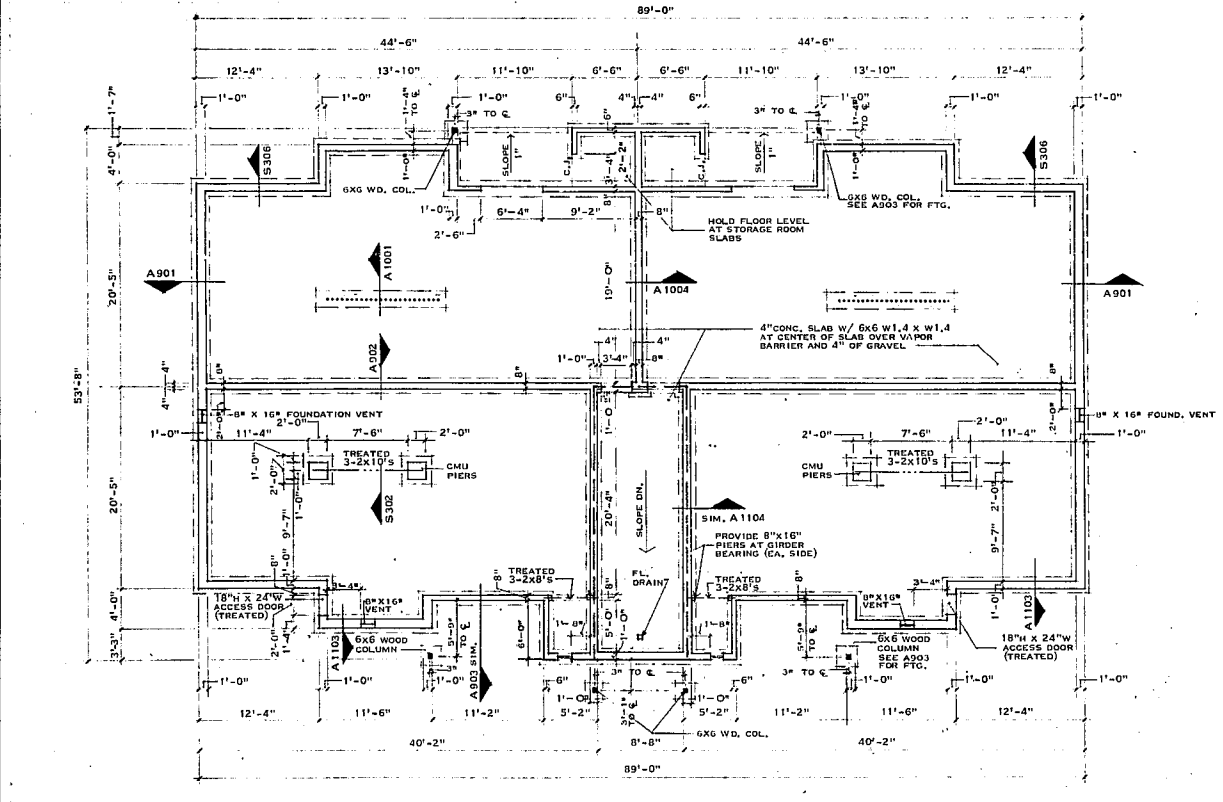
BUILDING #9 and #10
BUILDING #13 and #14

foundation plan 01
SCALE 1/8" = 1'-0"

..... ONE HOUR RATED INTERIOR BEARING WALL U.L. DESIGN #U303
 - - - - - FOUR HOUR FIREWALL U.L. DESIGN #U501
 ——— TWO HOUR FIREWALL U.L. DESIGN #U302

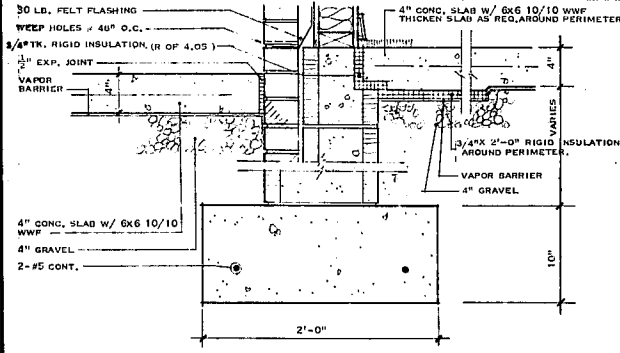


detail 02
SCALE 1 1/2" = 1'-0"

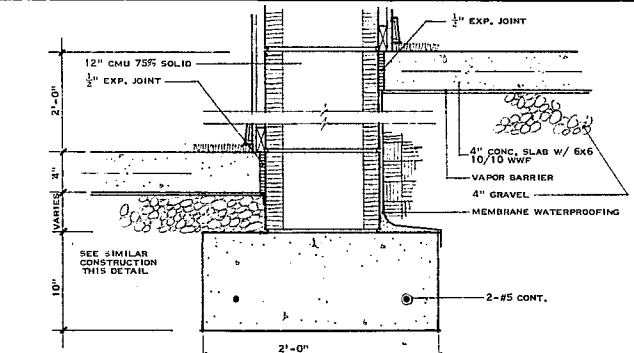


BUILDING #6

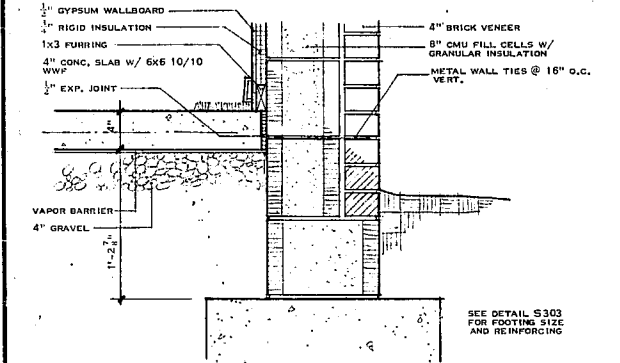
foundation plan 05
SCALE 1/8" = 1'-0"



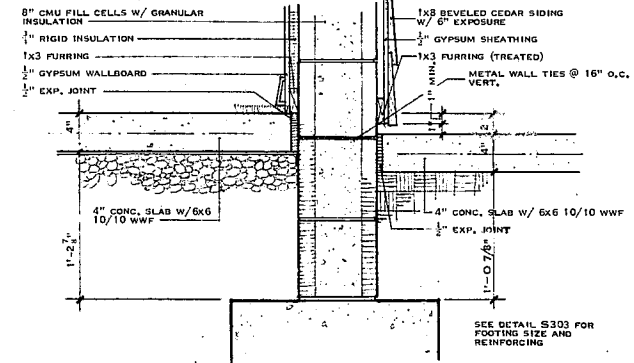
detail 03
SCALE 1 1/2" = 1'-0"



detail 04
SCALE 1 1/2" = 1'-0"



detail 06
SCALE 1 1/2" = 1'-0"



detail 07
SCALE 1 1/2" = 1'-0"



revisions
REVISIONS: MARCH 2, 1981

atai

architects fred tolson associates inc
 suite 200 3301 executive drive
 raleigh, n. c. 27609 919-876-9400

architects fred tolson

project
ASHTON WOODS APARTMENTS
 owner
ASHTON WOODS ASSOCIATES
 location
CARY, N. C.

job number
8002-04
 drawn by
ATAI
 date
NOVEMBER 1980

FOUNDATION PLANS AND DETAILS
 ISSUED FOR CONSTRUCTION
 MARCH 2, 1981

SHEET NUMBER
S3
OF 6 SHEETS

THIS DOCUMENT IS THE PROPERTY OF ARCHITECTS FRED TOLSON ASSOCIATES, INC. TO REUSE THIS DOCUMENT FOR ANY PURPOSE OTHER THAN THE EXECUTION OF THE ABOVE TITLED PROJECT IS PROHIBITED WITHOUT PRIOR WRITTEN PERMISSION OF THE ARCHITECT. RETURN ALL COPIES TO THE ARCHITECT UPON REQUEST.