



revisions
 REVISED MARCH 2, 1981

atai

associates inc
 2300 executive drive
 Raleigh, N. C. 27609 919-876-8400

architects
 fred tolson

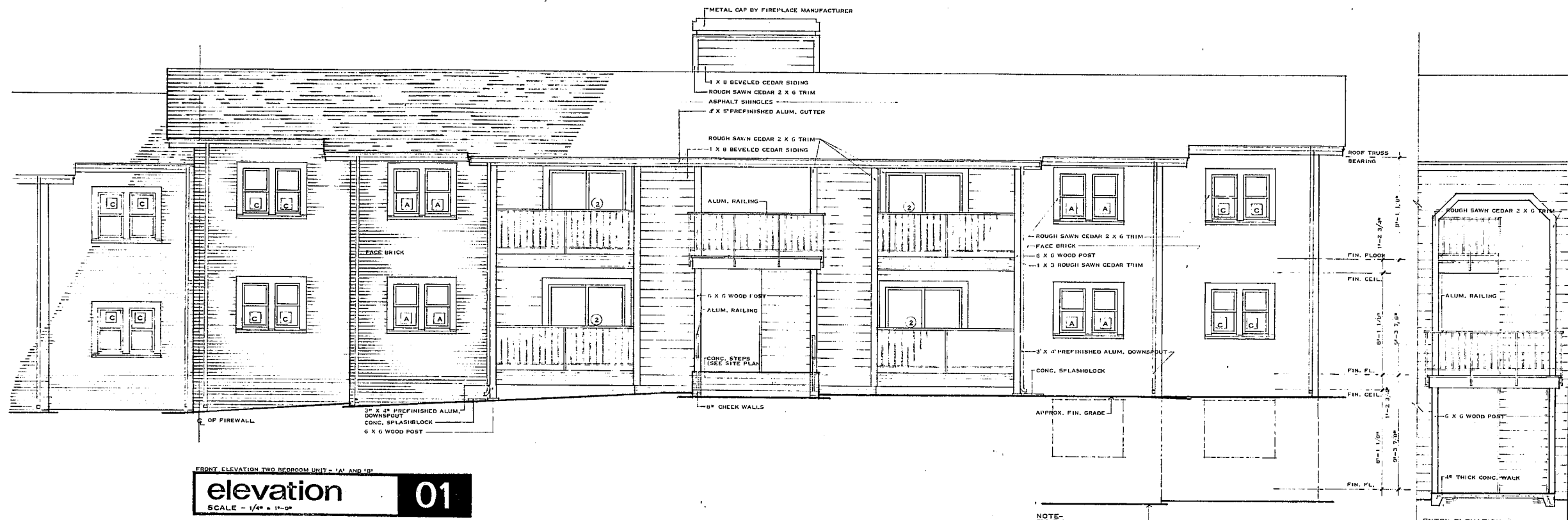
project
 ASHTON WOODS APARTMENTS
 owner
 ASHTON WOODS ASSOCIATES
 location
 CARY, N. C.

job number
 8002-04
 drawn by
 ATAI
 date
 NOVEMBER 1980

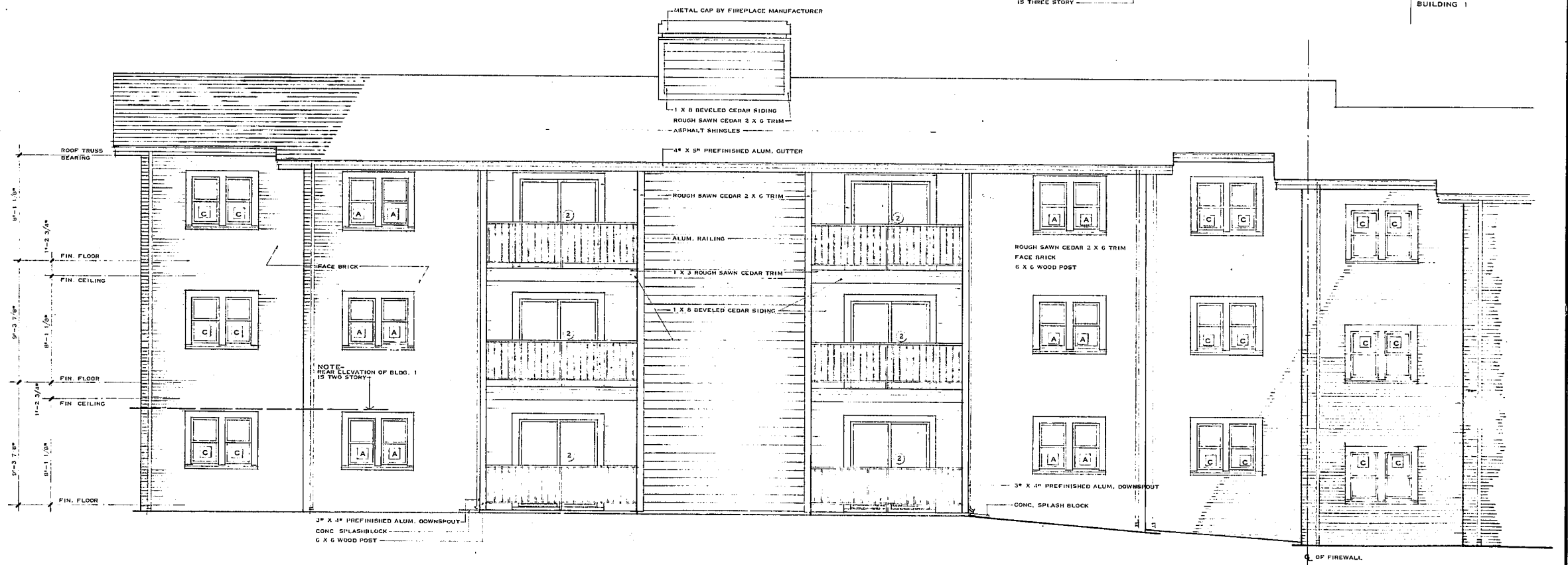
BUILDING ELEVATIONS

ISSUED FOR CONSTRUCTION
 MARCH 2, 1981

SHEET NUMBER
A6
 OF 12 SHEETS



FRONT ELEVATION TWO BEDROOM UNIT - 'A' AND 'B'
elevation 01
 SCALE - 1/4" = 1'-0"



REAR ELEVATION TWO BEDROOM UNIT (W. BASEMENT) - 'A' AND 'B'
elevation 02
 SCALE - 1/4" = 1'-0"