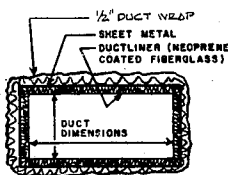


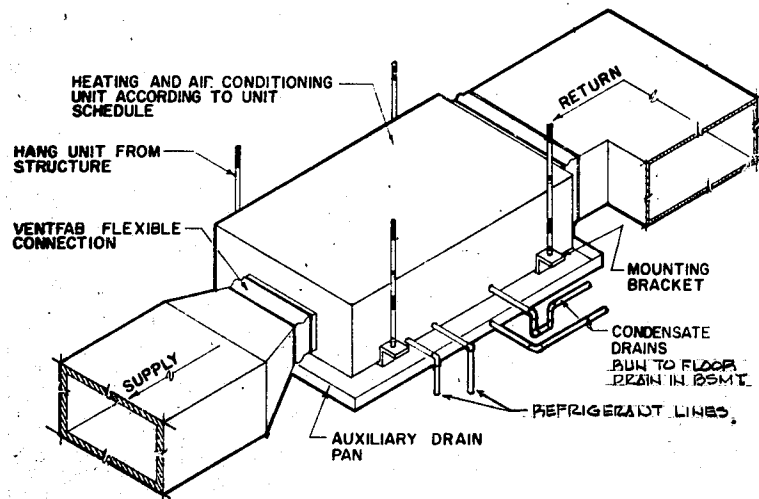
FLOOR PLAN-MECHANICAL 1/4"=1'-0"



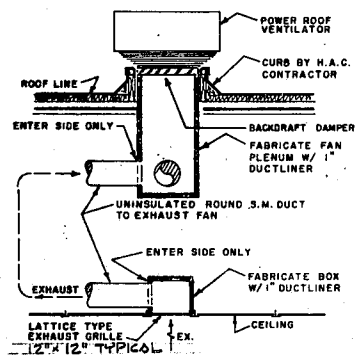
NOTE: ALL DUCT DIMENSIONS SHOWN ON THESE DRAWINGS ARE INSIDE CLEAR. DUCT FABRICATOR MUST MAKE ALLOWANCE FOR DUCTLINER IN SHEET METAL SIZE.

DUCT FABRICATION DETAIL NO SCALE

NOTE: THIS DETAIL APPLIES THIS BLDG. ONLY.

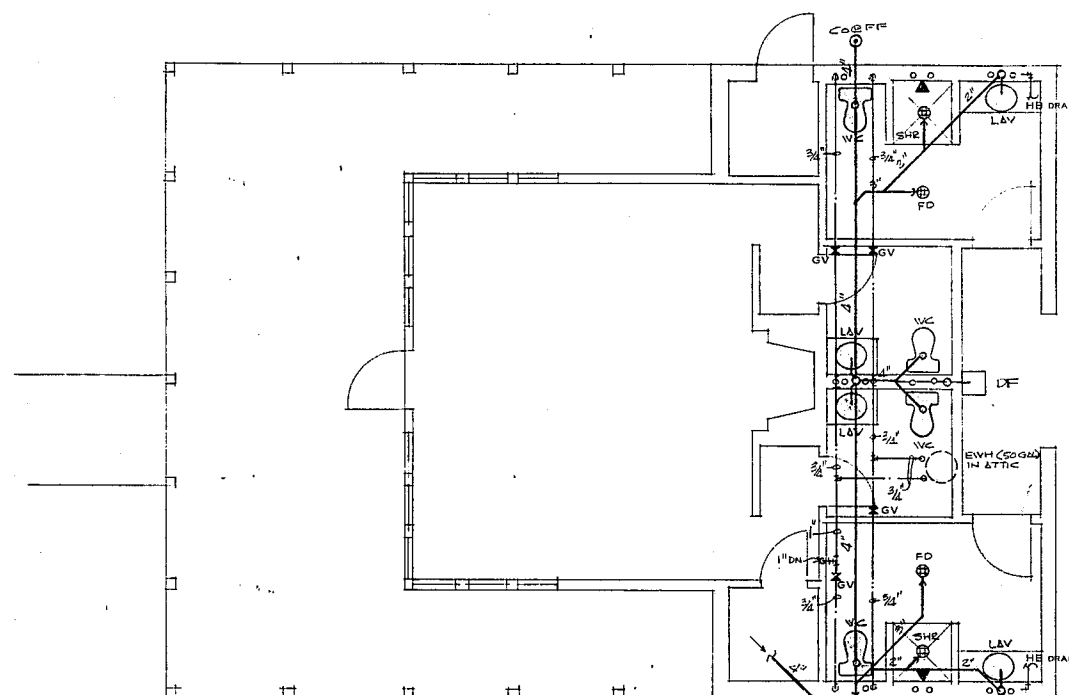


HEATING AND AIR CONDITIONING UNIT INSTALLATION DETAIL NO SCALE

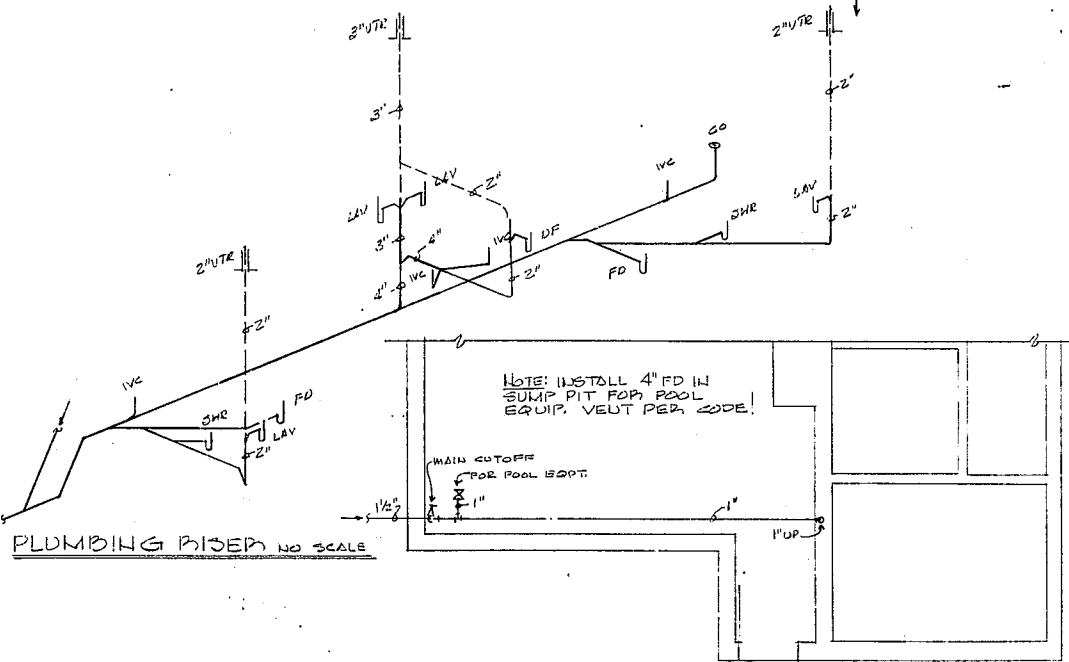


POWER ROOF VENTILATOR DETAIL NO SCALE

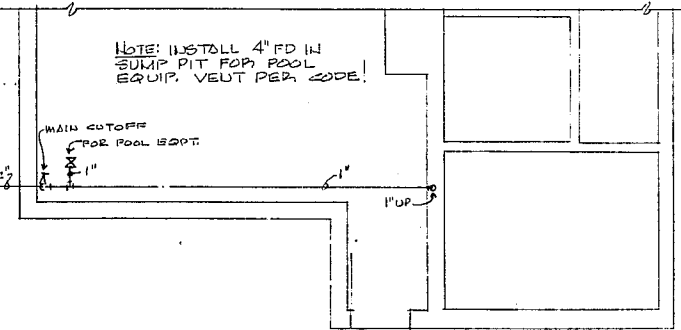
POWER ROOF VENTILATOR POWER LINE 90DPE 8 X 1/2 HD 110V, 1550 RPM, 502 CFM @ 1/2\"/>



FLOOR PLAN-PLUMBING 1/4"=1'-0"



PLUMBING RISER NO SCALE



PARTIAL BASEMENT PLAN 1/4"=1'-0"



revisions
REVISED MARCH 2, 1981

atai

architects
fred tolson
associates inc
suite 200
3301 executive drive
raleigh, n. c. 27609 919-876-8400

project
ASHTON WOODS APARTMENTS
owner
ASHTON WOODS ASSOCIATES
location
CARRVILLE
job number
8002-04
drawn by JAB, LEV
date
NOVEMBER 1980
PLUMBING AND MECHANICAL PLANS FOR OFFICE/REC. BUILDING
ISSUED FOR CONSTRUCTION
MARCH 2, 1981

SHEET NUMBER
PM-1
OF 1 SHEETS

**B
N
K**
BASS, NIXON & KENNEDY, INC.
CONSULTING ENGINEERS
7416 CHAPEL HILL ROAD
RALEIGH, NORTH CAROLINA 27606



THIS DOCUMENT IS THE PROPERTY OF ARCHITECTS FRED TOLSON ASSOCIATES, INC. TO REUSE THIS DOCUMENT FOR ANY PURPOSE OTHER THAN THE EXECUTION OF THE ABOVE TITLED PROJECT IS PROHIBITED WITHOUT PRIOR WRITTEN PERMISSION OF THE ARCHITECT. RETURN ALL COPIES TO THE ARCHITECT UPON REQUEST.