

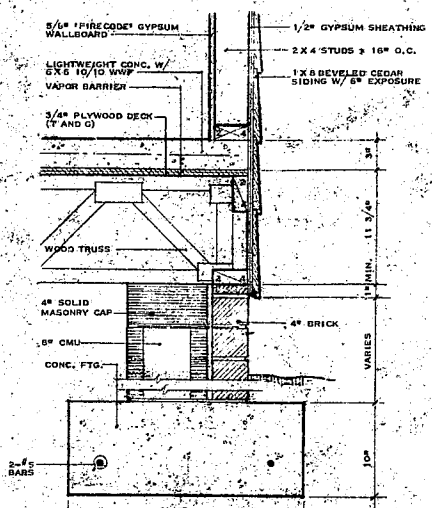
UNITS A, B, C, D SEE SHEET A-1 FOR KITCHEN SCHEDULE
floor plan 01
 SCALE - 3/8" = 1'-0"

02

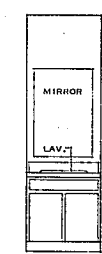
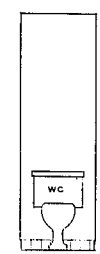
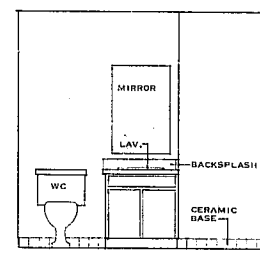
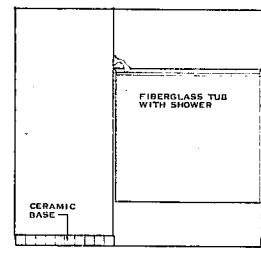
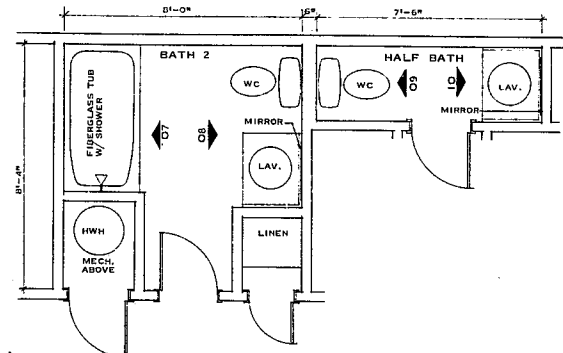
03

UNIT A, HANDICAP
04

05



STORAGE ROOM @ FRONT
detail 20
 SCALE - 1/2" = 1'-0"



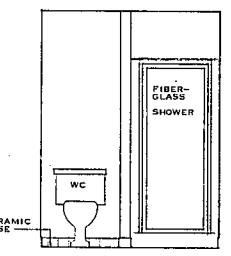
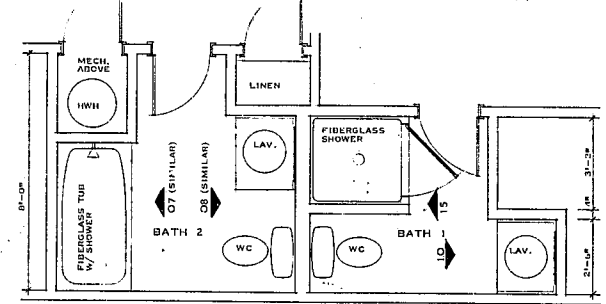
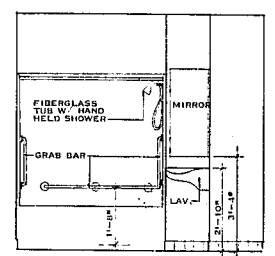
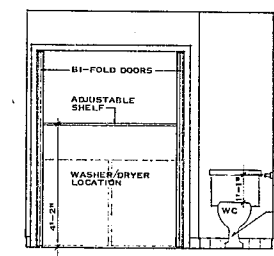
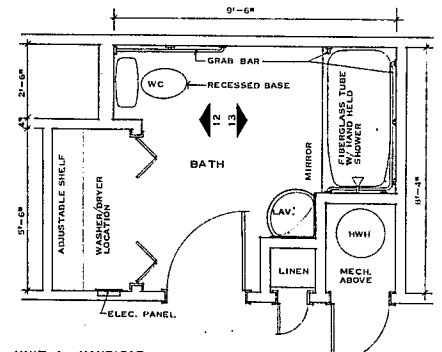
UNIT A
floor plan 06
 SCALE - 3/8" = 1'-0"

07

08

09

10



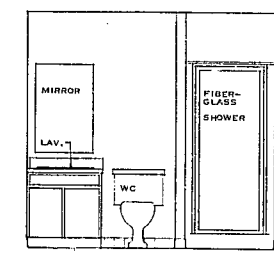
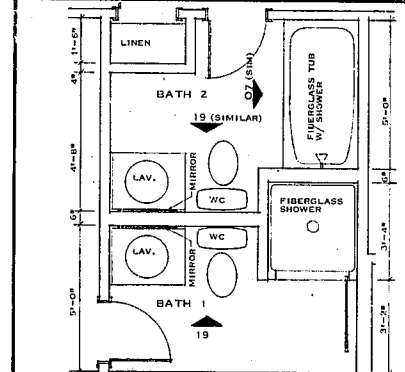
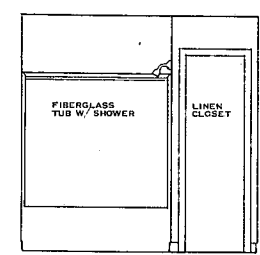
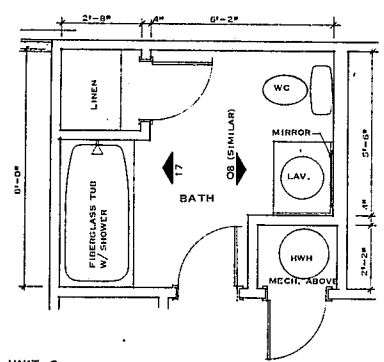
UNIT A, HANDICAP
floor plan 11
 SCALE - 3/8" = 1'-0"

12

13

UNIT B
floor plan 14

15



UNIT C
floor plan 16
 SCALE - 3/8" = 1'-0"

17

UNIT D
floor plan 18
 SCALE - 3/8" = 1'-0"

19

PUBLIC TOILETS (RECREATION BLDG.) - PROVIDE THE FOLLOWING IN EACH TOILET

QUANTITY	DESCRIPTION	LOCATION	MANUFACTURER/MODEL NO.
1	TOILET TISSUE HOLDER	AT WATER CLOSET	MIAMI-CAREY/7006
1	MIRROR	AT LAVATORY	MIAMI-CAREY/16" X 24"
1	18" TOWEL BAR	AT LAVATORY	MIAMI-CAREY/7014
1*	GRAB BAR	AT WATER CLOSET	MIAMI-CAREY/GB6100(36")

* ONLY WHERE SHOWN ON PLAN

HANDICAP TOILETS - PROVIDE FOLLOWING IN EACH DASH:

QUANTITY	DESCRIPTION	LOCATION	MANUFACTURER/MODEL NO.
1	MEDICINE CABINET	AT LAVATORY	MIAMI-CAREY/CSW 170-16
1	TOILET TISSUE HOLD.	AT WATER CLOSET	MIAMI-CAREY/7006
1	TUMBLER/TOOTH BRUSH HOLDER	AT LAVATORY	MIAMI-CAREY/7003
1	SOAP DISH	AT LAVATORY	MIAMI-CAREY/7001
1	18" TOWEL BAR	AT LAVATORY	MIAMI-CAREY/7014
1	SHOWER CURTAIN ROD	AT TUB	MIAMI-CAREY/6067
1	GRAB BAR	AT WATER CLOSET	MIAMI-CAREY/GB7300 (32")
1	GRAB BAR	AT TUB	MIAMI-CAREY/GB6100

BATH ACCESSORY SCHEDULE

FULL BATHS - PROVIDE THE FOLLOWING IN EACH FULL BATH			
QUANTITY	DESCRIPTION	LOCATION	MANUFACTURER/MODEL NO.
1	MEDICINE CABINET	ABOVE LAVATORY	MIAMI-CAREY/CSW 170-16
1	TOILET TISSUE HOLD.	AT WATER CLOSET	MIAMI-CAREY/7006
1	TUMBLER/TOOTH BRUSH HOLDER	AT LAVATORY	MIAMI-CAREY/7003
1	SOAP DISH	AT LAVATORY	MIAMI-CAREY/7001
1	18" TOWEL BAR	AT LAVATORY	MIAMI-CAREY/7014
1	24" TOWEL BAR	AT TUB	MIAMI-CAREY/7015
1	SHOWER CURTAIN ROD	AT TUB	MIAMI-CAREY/6067
HALF BATHS - PROVIDE THE FOLLOWING IN EACH HALF BATH			
1	MEDICINE CABINET	ABOVE LAVATORY	MIAMI-CAREY/CSW 170-16
1	TOILET TISSUE HOLD.	AT WATER CLOSET	MIAMI-CAREY/7006
1	TUMBLER/TOOTH BRUSH HOLDER	AT LAVATORY	MIAMI-CAREY/7003
1	SOAP DISH	AT LAVATORY	MIAMI-CAREY/7001
1	18" TOWEL BAR	AT LAVATORY	MIAMI-CAREY/7014
PUBLIC TOILETS (RECREATION BLDG.) - PROVIDE THE FOLLOWING IN EACH TOILET			
1	TOILET TISSUE HOLDER	AT WATER CLOSET	MIAMI-CAREY/7006
1	MIRROR	AT LAVATORY	MIAMI-CAREY/16" X 24"
1	18" TOWEL BAR	AT LAVATORY	MIAMI-CAREY/7014
1*	GRAB BAR	AT WATER CLOSET	MIAMI-CAREY/GB6100(36")
HANDICAP TOILETS - PROVIDE FOLLOWING IN EACH DASH:			
1	MEDICINE CABINET	AT LAVATORY	MIAMI-CAREY/CSW 170-16
1	TOILET TISSUE HOLD.	AT WATER CLOSET	MIAMI-CAREY/7006
1	TUMBLER/TOOTH BRUSH HOLDER	AT LAVATORY	MIAMI-CAREY/7003
1	SOAP DISH	AT LAVATORY	MIAMI-CAREY/7001
1	18" TOWEL BAR	AT LAVATORY	MIAMI-CAREY/7014
1	24" TOWEL BAR	AT LAVATORY	MIAMI-CAREY/7015
1	SHOWER CURTAIN ROD	AT TUB	MIAMI-CAREY/6067
1	GRAB BAR	AT WATER CLOSET	MIAMI-CAREY/GB7300 (32")
1	GRAB BAR	AT TUB	MIAMI-CAREY/GB6100



revisions
 REVISED MARCH 2, 1981

atai

associates inc
 suite 200 3301 executive drive
 raleigh, n. c. 27609 919-876-8400

architects
 fred tolson

project
 ASHTON WOODS APARTMENTS
 owner
 ASHTON WOODS ASSOCIATES
 location
 CARY, N. C.

job number
 8002-04
 drawn by
 ATAI
 date
 NOVEMBER 1980

KITCHEN AND BATH ENLARGED PLANS AND SCHEDULES

ISSUED FOR CONSTRUCTION
 MARCH 2, 1981

SHEET NUMBER
A12
 OF 12 SHEETS

THIS DOCUMENT IS THE PROPERTY OF ARCHITECTS FRED TOLSON ASSOCIATES, INC. TO REUSE THIS DOCUMENT FOR ANY PURPOSE OTHER THAN THE EXECUTION OF THE ABOVE TITLED PROJECT IS PROHIBITED WITHOUT PRIOR WRITTEN PERMISSION OF THE ARCHITECT. RETURN ALL COPIES TO THE ARCHITECT UPON REQUEST.