

POND FOUNTAIN SPECIFICATION

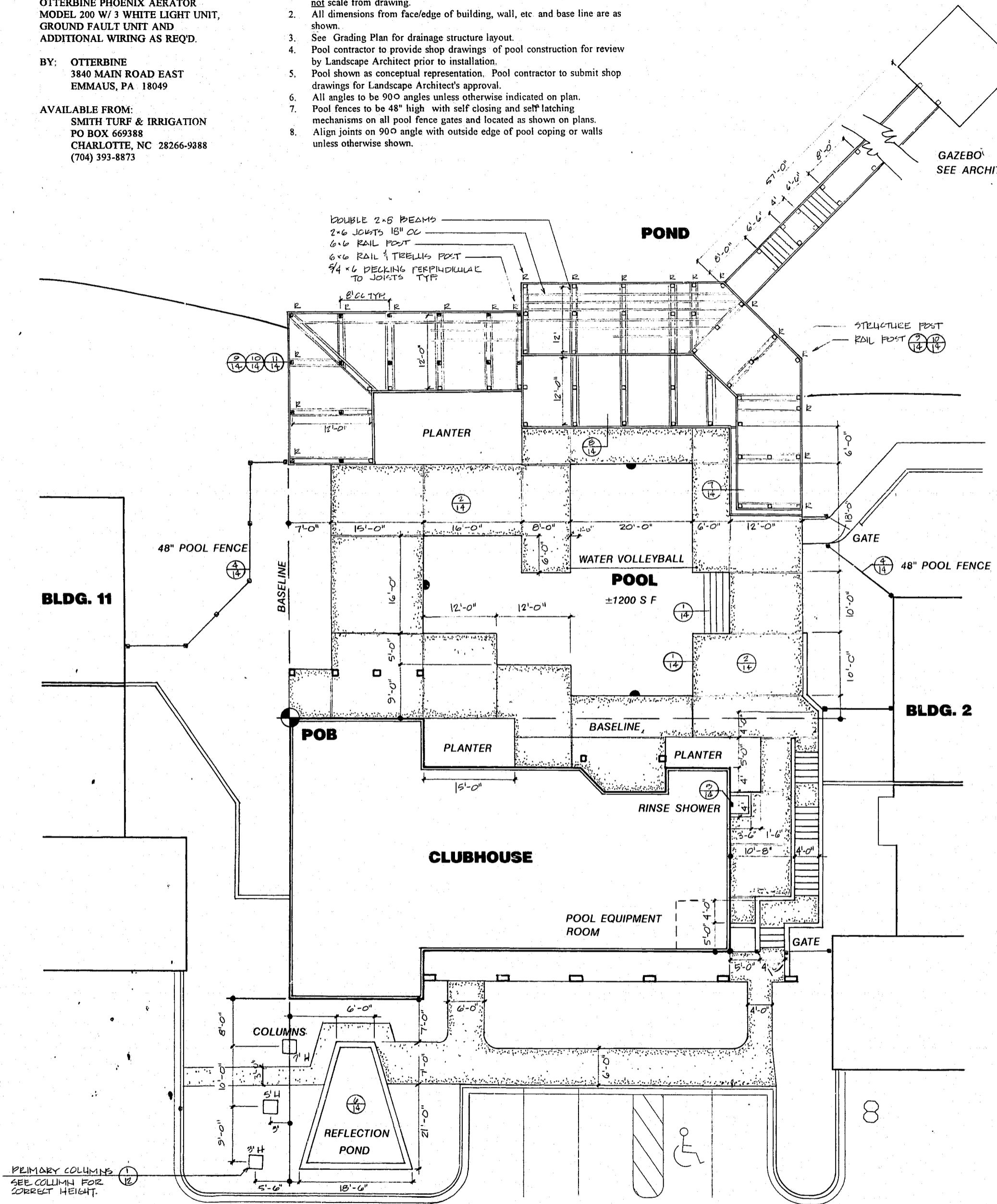
FOUNTAIN:
 OTTERBINE PHOENIX AERATOR
 MODEL 200 W/ 3 WHITE LIGHT UNIT,
 GROUND FAULT UNIT AND
 ADDITIONAL WIRING AS REQ'D.

BY: OTTERBINE
 3840 MAIN ROAD EAST
 EMMANUS, PA 18049

AVAILABLE FROM:
 SMITH TURF & IRRIGATION
 PO BOX 669388
 CHARLOTTE, NC 28266-9388
 (704) 393-8873

LAYOUT NOTES:

1. Notify Landscape Architect upon any discrepancies affecting layout. Do not scale from drawing.
2. All dimensions from face/edge of building, wall, etc. and base line are as shown.
3. See Grading Plan for drainage structure layout.
4. Pool contractor to provide shop drawings of pool construction for review by Landscape Architect prior to installation.
5. Pool shown as conceptual representation. Pool contractor to submit shop drawings for Landscape Architect's approval.
6. All angles to be 90° angles unless otherwise indicated on plan.
7. Pool fences to be 48" high with self closing and self latching mechanisms on all pool fence gates and located as shown on plans.
8. Align joints on 90° angle with outside edge of pool coping or walls unless otherwise shown.

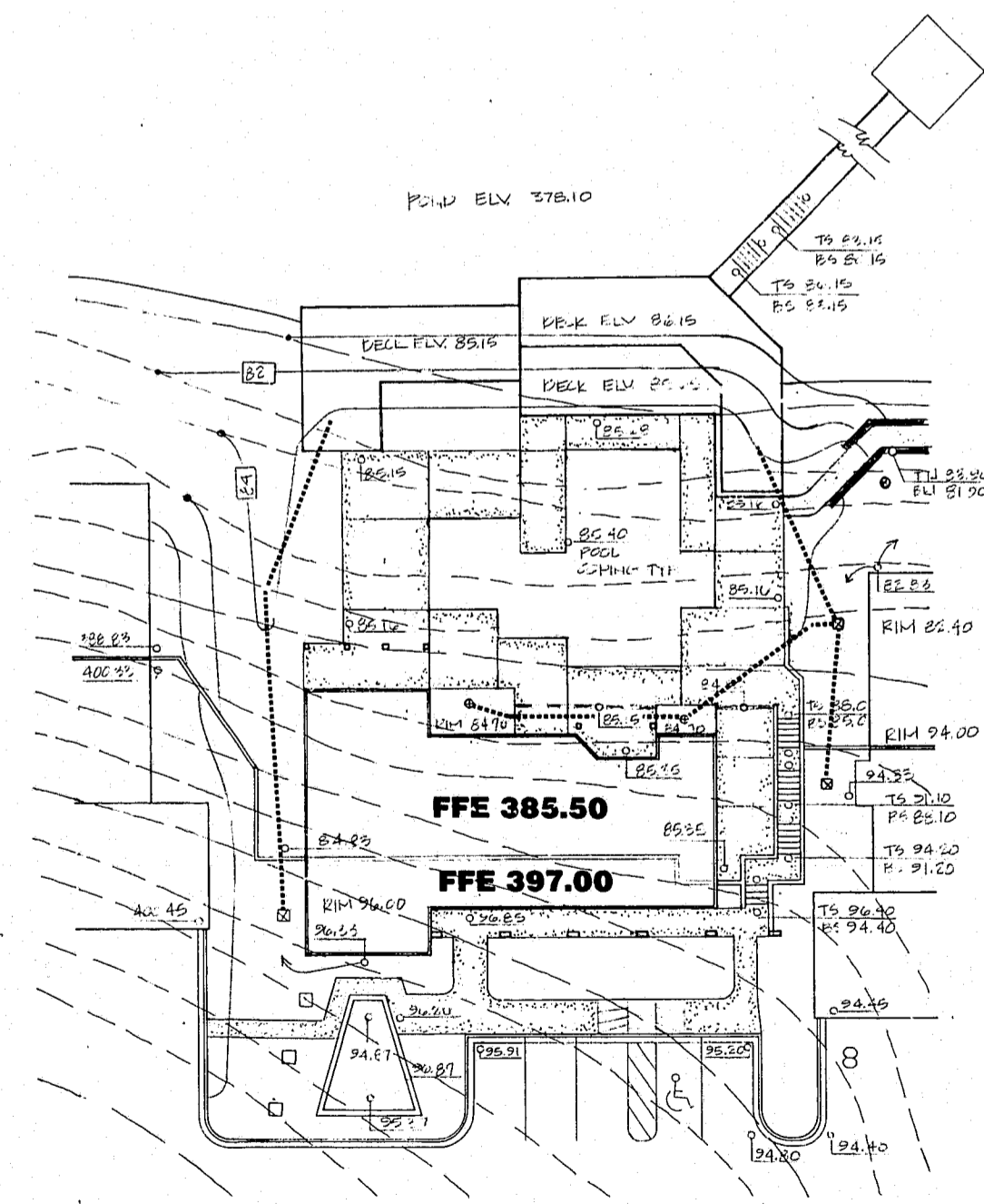


STAKING PLAN

SCALE: 1" = 10'



GAZEBO
 SEE ARCHITECTURALS



GRADING PLAN

SCALE: 1" = 20'

POND ELV. 378.10

POOL DRAINAGE SPECIFICATIONS

TRENCH DRAIN:
 QUAKER PLASTIC PRODUCTS
 DECK-A-WAY QP-981 G
 GRAY TRENCH DRAIN
 DECK-A-WAY 2" PIPE, BENDS
 AND ADAPTERS AS NEEDED

BY: QUAKER PLASTIC PRODUCTS
 103 SOUTH MANOR STREET
 MOUNTVILLE, PA. 17554
 (717) 285-4571

ATRIUM GRATE:
 NDS 80ATRIUM 6" ATRIUM GRATE
 GREEN

NDS 1280 12"x12" ATRIUM GRATE W/
 NDS RISERS AS NEEDED
 NDS OUTLETS AS SHOWN
 NDS 1223 12"x12"x4"x 6" S.D. HUB ADAPTER

BY: NATIONAL DIVERSIFIED SALES, INC.
 2550 AZURITE CIRCLE
 NEWBERRY PARK, CA 91320
 (800) 235-3533

LEGEND

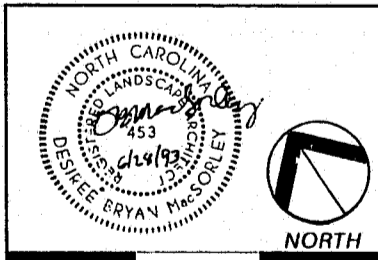
EXISTING CONTOUR	
PROPOSED CONTOUR	
PROPOSED SPOT ELEVATION	
BREAK POINT	
FINISH FLOOR ELEVATION	FFE
12" ATRIUM GRATE	
6" ATRIUM GRATE	
6" PVC	
TRENCH DRAIN	
RETAINING WALL	
TW - TOP ELEV.	
BW - BOTTOM ELEV.	
STEPS	
TS - TOP ELEV.	
BS - BOTTOM ELEV.	

AUDUBON PARC
 a 180 unit Multi-family Community in
 Cary, North Carolina
 Developed by Summit Properties, 212 South Tryon Street, Suite 500, Charlotte, North Carolina 28281

DESIGN RESOURCE GROUP, PA

500 East Boulevard
 Suite 102
 Charlotte, NC 28203
 PH 704 343-0608
 FAX 704 343-9380

POOL PLAN



Scale: _____
 Date: 25 JUNE 1993
 Revisions: [REVISIONS] L.G.P.H.
 20 SEPTEMBER 1993

FOR CONSTRUCTION