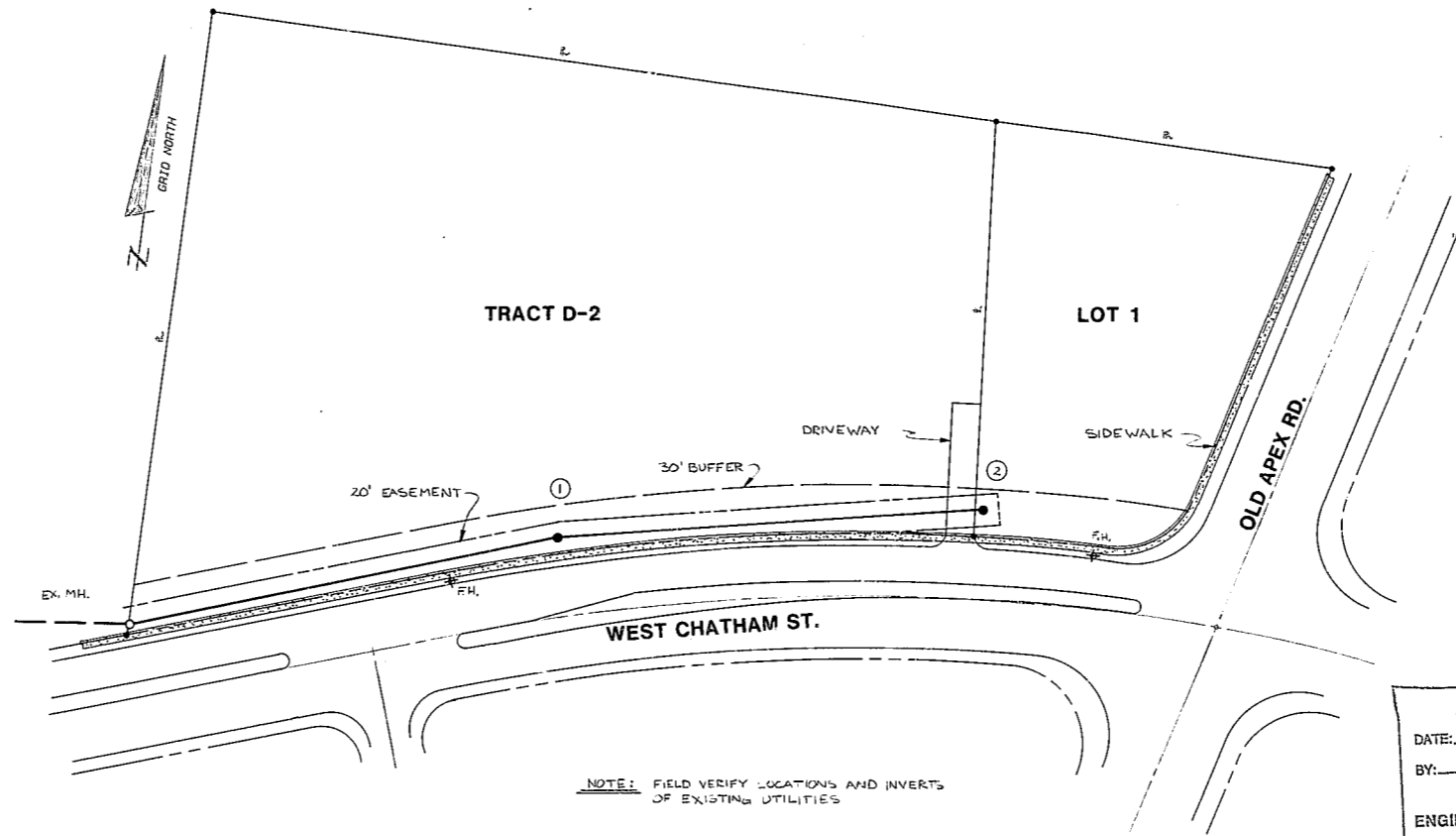
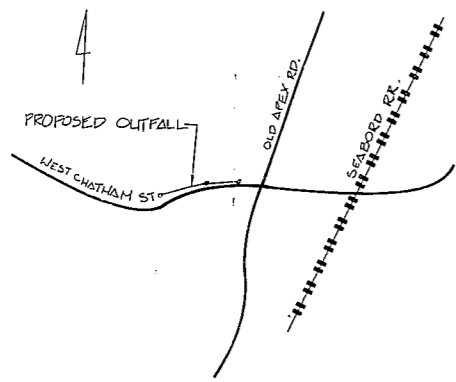


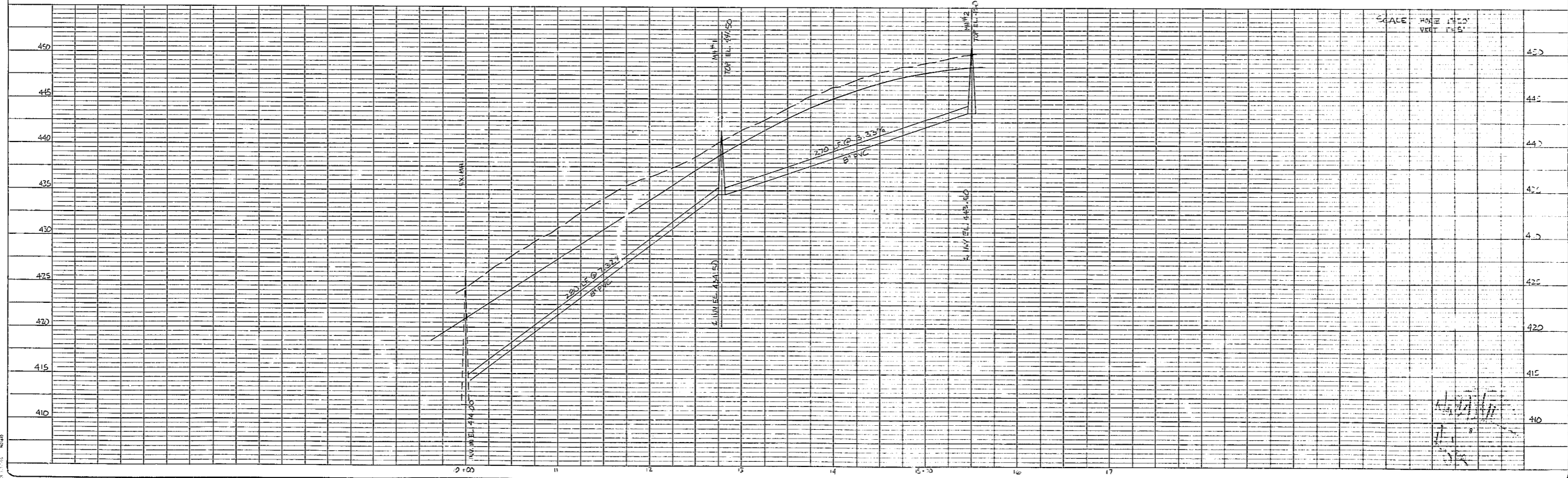
VICINITY MAP
SCALE: 1" = 500'



NOTE: FIELD VERIFY LOCATIONS AND INVERTS OF EXISTING UTILITIES

APPROVED
DATE: 8/20/89
BY: S. O'Neil
TOWN OF CARY
ENGINEERING DEPARTMENT

NOT FOR CONSTRUCTION
NOTE: IT IS THE CONTRACTOR'S RESPONSIBILITY TO VERIFY THE LOCATION OF ALL EXISTING UTILITIES.
NOTE: ALL WORK IS TO BE DONE IN CONFORMANCE WITH TOWN OF CARY STANDARDS AND SPECIFICATIONS.



GULF STATION OUTFALL (LOT 1)

HUGH J. GILLECE & ASSOC.
104 FOUNTAINBROOK CIRCLE SUITE C CARY N.C. 27511 (919) 469-1101

DESIGNER	DATE	SHEET 1 OF
DRAWN BY	SCALE	
CHECKED BY	DATE	
REVISIONS		1990.10