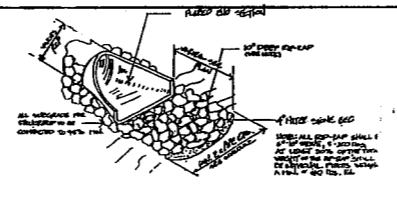
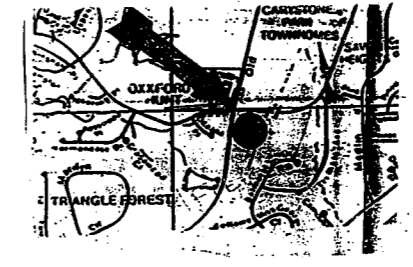


STANDARD OPEN-THROATED CATCH BASIN



FLARED END SECTION
NO SCALE

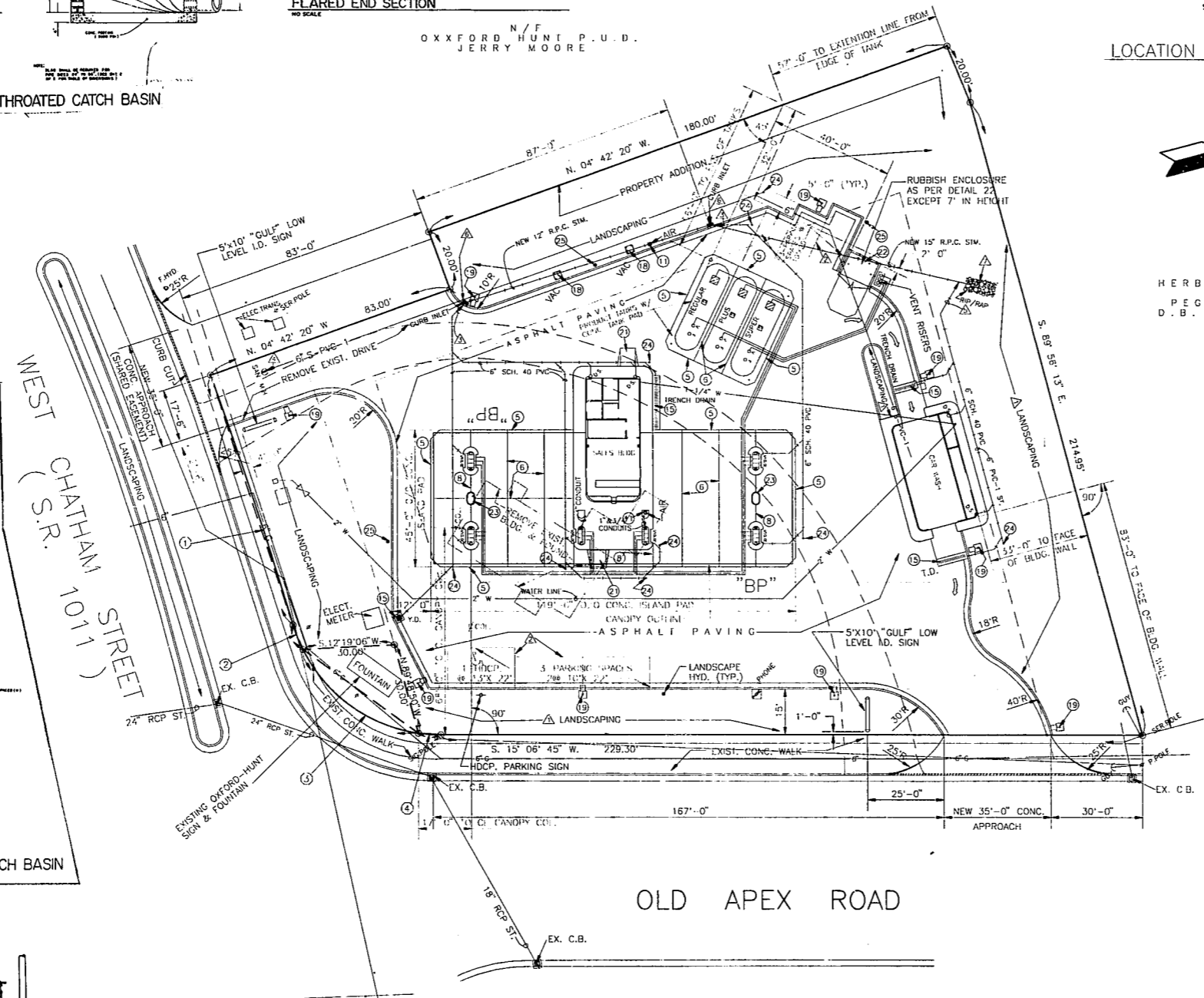
STATION	VERT. CURVE DATA	DATE	REMARKS
1+00	R=1362.90' T=43.17' L=86.37'	1/13/89	
1+87	$\Delta=0.37' 44"$		
2+00	CH. BRG.=S. 87° 07' 05" W. CH.=86.30'		
2+50	R=50.00' T=4.31' L=8.58' $\Delta=09° 50' 56"$		
3+00	CH. BRG.=S. 83° 59' 08" W. CH.=8.58'		
3+50	R=50.00' T=26.38' L=48.56' $\Delta=55° 38' 26"$		
4+00	CH. BRG.=S. 51° 15' 16" W. CH.=46.67'		
4+50	R=50.00' T=3.64' L=7.26' $\Delta=08° 19' 18"$		
5+00	CH. BRG.=S. 19° 16' 24" W. CH.=7.26'		



LOCATION PLAN
SCALE=1"=500'-0"



HERBERT N/F
& C. YOUNG
PEGGY B. YOUNG
D.B. 1630 P.C. 449



SECTION RR



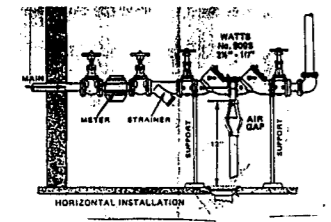
SECTION SS



PLAN OF TOP SLAB

NO.	DESCRIPTION	DATE	BY	CHKD.
1	ISSUED FOR PERMITS	3/20/89	GSJ	E.H.
2	ISSUED FOR CONSTRUCTION	3/20/89	GSJ	E.H.
3	ISSUED FOR RECORD	3/20/89	GSJ	E.H.
4	ISSUED FOR RECORD	3/20/89	GSJ	E.H.
5	ISSUED FOR RECORD	3/20/89	GSJ	E.H.
6	ISSUED FOR RECORD	3/20/89	GSJ	E.H.
7	ISSUED FOR RECORD	3/20/89	GSJ	E.H.
8	ISSUED FOR RECORD	3/20/89	GSJ	E.H.
9	ISSUED FOR RECORD	3/20/89	GSJ	E.H.
10	ISSUED FOR RECORD	3/20/89	GSJ	E.H.

STANDARD OPEN-THROATED CATCH BASIN



BACKFLOW PREVENTER DETAIL
N.T.S.

BUILDINGS:

- NEW B-733 SD-2C SALES BUILDING.
- NEW B-3620-LT-2C CAR WASH.
- INSTALL ALL ELECTRICAL AND PHONE SERVICES UNDERGROUND TO BUILDINGS.
- CANOPY**
- NEW B-43X117' CB-19 CANOPY.

TANKS, DISPENSERS & ISLAND TREATMENT:

- INSTALL (3) 10,000 GALLON FIBERGLASS PRODUCT TANKS W/SUBMERGED PUMPS, 2" GLASS FIBER PRODUCT AND VENT PIPING.
- VENT RISERS TO EXTEND A MIN. 12'-6" ABOVE FIN. GRADE.
- INSTALL (6) MULTIPLE PRODUCT DISPENSERS WITH ISLANDS.
- SEE DRAWINGS: 15-R, & 13-RG.
- YARD & DRIVE:**
- SEE DRAWING 16 FOR INSTALLATION DETAILS OF ITEMS SHOWN: O.
- TANK PAD TO BE 8" THICK CONC. W/6X6X6 GA. WELDED WIRE FABRIC.
- ISLAND PAD TO BE 6" THICK CONC. W/6X6X6 GA. WELDED WIRE FABRIC.
- YARD PAVING TO BE ASPHALT TYPE "A".
- APPROACHES TO BE 8" THICK CONC. W/6X6X6 GA. WELDED WIRE FABRIC.

I.D. SIGNS:

- INSTALL (2) NEW 5'X10' I.D. SIGNS, 1 MESSAGES, 2 PRICES, 6 FEET HIGH, TWIN POLE.

NOTES:

- REMOVE ALL ABOVE AND BELOW GROUND STRUCTURES FROM CONSTRUCTION SITE UNLESS NOTED OTHERWISE.
- 1) GENERAL CONTRACTOR TO GRADE LANDSCAPE AREAS TO 6" BELOW FINISH GRADE. OWNER WILL LANDSCAPE.
- 2) G.C. TO PAINT PARKING STRIPES.
- 3) TIE NEW 6" SCH. 40 PVC STORM SEWER INTO NEW C.B.'S INVERTS.
- 4) TIE NEW 6" PVC-1 SAN. INTO EXIST. SAN. M.H.'S INVERT.
- 5) TIE NEW 6" SCH. 40 PVC STORM SEWER INTO NEW 15" R.P.C. STORM LINE.
- 6) INSTALL NEW CURB INLETS PER DETAILS THIS SHEET.
- 7) INSTALL RIP/RAP PER DETAILS THIS SHEET.

BP OIL CO.
d.b.a. "GULF PRODUCTS"
RETAIL MARKETING
DESIGN AND ENGINEERING
200 PUBLIC SQUARE
CLEVELAND, OHIO 44114

PLOT PLAN
OLD APEX & WEST CHATHAM
CARY, NORTH CAROLINA

DWG. NO.: 32-183-01540	REV.: 10		
SCALE: 1"=20'-0"	MADE BY: GSJ		
DATE: 3/20/89	CHECKED BY: E.H.		
REVISIONS	DATE	OWN	CKD
1	3/20/89	GSJ	E.H.
2	3/20/89	GSJ	E.H.
3	3/20/89	GSJ	E.H.
4	3/20/89	GSJ	E.H.
5	3/20/89	GSJ	E.H.
6	3/20/89	GSJ	E.H.
7	3/20/89	GSJ	E.H.
8	3/20/89	GSJ	E.H.
9	3/20/89	GSJ	E.H.
10	3/20/89	GSJ	E.H.

32-183-01540 OLD APEX & W. CHATHAM