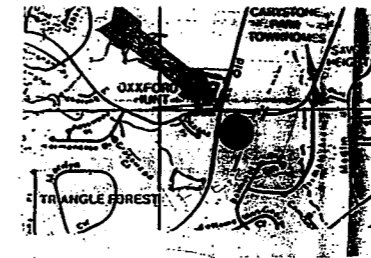


STANDARD OPEN-THROATED CATCH BASIN

FLARED END SECTION  
N/F  
OXFORD HUNT P.U.D.  
JERRY MOORE

STATION	DATE	DESCRIPTION	BY	CHECKED
1+00	1/15/89	PRELIMINARY	H.F.	
1+50	2/10/89	REVISED	H.F.	
2+00	3/10/89	REVISED	H.F.	
2+50	3/20/89	REVISED	H.F.	
3+00	3/20/89	REVISED	H.F.	
3+50	3/20/89	REVISED	H.F.	
4+00	3/20/89	REVISED	H.F.	
4+50	3/20/89	REVISED	H.F.	
5+00	3/20/89	REVISED	H.F.	
5+50	3/20/89	REVISED	H.F.	
6+00	3/20/89	REVISED	H.F.	
6+50	3/20/89	REVISED	H.F.	
7+00	3/20/89	REVISED	H.F.	
7+50	3/20/89	REVISED	H.F.	
8+00	3/20/89	REVISED	H.F.	
8+50	3/20/89	REVISED	H.F.	
9+00	3/20/89	REVISED	H.F.	
9+50	3/20/89	REVISED	H.F.	
10+00	3/20/89	REVISED	H.F.	

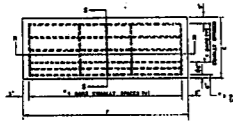
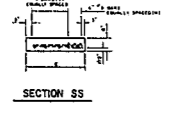
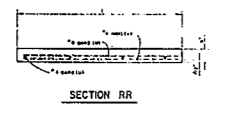


LOCATION PLAN  
SCALE=1"=500'-0"

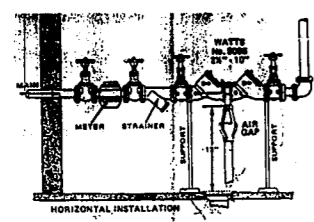


HERBERT F. YOUNG  
PEGGY B. YOUNG  
D.B. 1630 P.C. 449

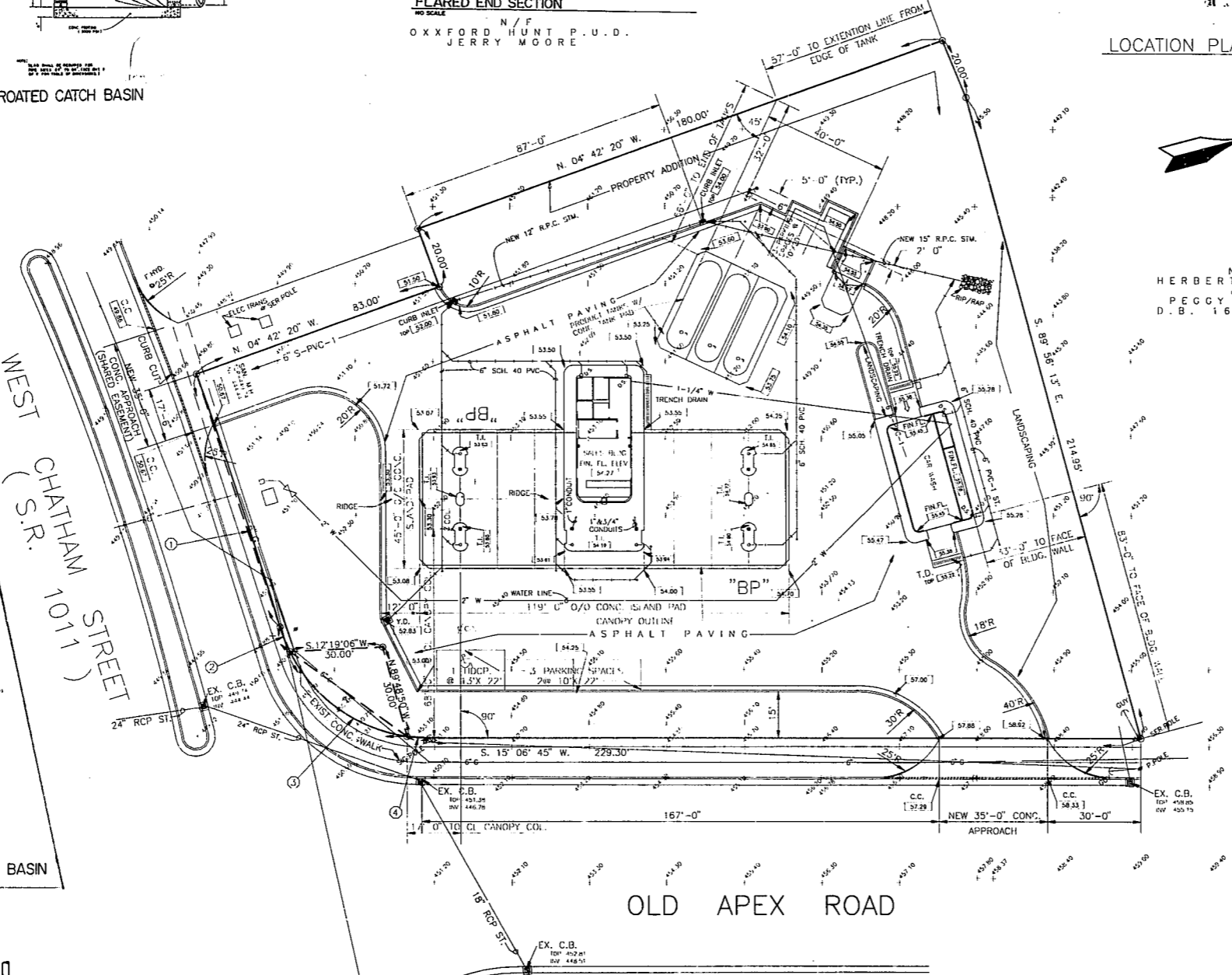
WEST CHATHAM STREET (S.R. 1011)



STANDARD OPEN-THROATED CATCH BASIN



BACKFLOW PREVENTER DETAIL  
N.T.S.



TOP OF FOUNDATION: [51.33]  
CL. OF DRAINS: [51.87]  
BOTTOM OF FASCIA: [58.79]

TOP OF TANKS: [56.90]

BENCH MARK: T.B.M. NAIL IN POWER POLE AT N.E. CORNER OF P.L. ELEVATION= 459.18.  
EXISTING ELEVATIONS SHOWN: 000.00.  
FINISH ELEVATIONS SHOWN: [50.00].  
ADD 400.00 TO ALL FINISH ELEVATIONS TO OBTAIN B.M. DATUM.

**BP OIL CO.**  
d.b.a. "GULF PRODUCTS"  
RETAIL MARKETING  
DESIGN AND ENGINEERING  
200 PUBLIC SQUARE  
CLEVELAND, OHIO 44114

**GRADING PLAN**  
**OLD APEX & WEST CHATHAM**  
CARY, NORTH CAROLINA

CURVE DATA:

- ① R=1362.90' T=43.17' L=86.32'  
Δ=0.3° 37' 44"  
CH. BRG.=S. 87° 07' 05" W. CH.=86.30'
- ② R=50.00' T=4.31' L=8.58' Δ=0° 50' 56"  
CH. BRG.=S. 83° 59' 08" W. CH.=8.58'
- ③ R=50.00' T=26.38' L=48.56'  
Δ=55° 38' 25"  
CH. BRG.=S. 51° 15' 16" W. CH.=46.67'
- ④ R=50.00' T=3.64' L=7.26' Δ=0° 19' 18"  
CH. BRG.=S. 19° 16' 24" W. CH.=7.26'

DWG. NO.: 32-183-01540	REV.: 9		
SCALE: 1"=20'-0"	MADE BY: GSJ		
DATE: 3/20/89	CHECKED BY: E.H.		
REVISIONS	DATE	DWN	CKD
1. CORRECTED	3/20/89	GSJ	E.H.
2. CORRECTED	3/20/89	GSJ	E.H.
3. CORRECTED	3/20/89	GSJ	E.H.
4. CORRECTED	3/20/89	GSJ	E.H.
5. CORRECTED	3/20/89	GSJ	E.H.
6. CORRECTED	3/20/89	GSJ	E.H.
7. CORRECTED	3/20/89	GSJ	E.H.
8. CORRECTED	3/20/89	GSJ	E.H.
9. CORRECTED	3/20/89	GSJ	E.H.
10. CORRECTED	3/20/89	GSJ	E.H.

32-183-01540 OLD APEX & W. CHATHAM