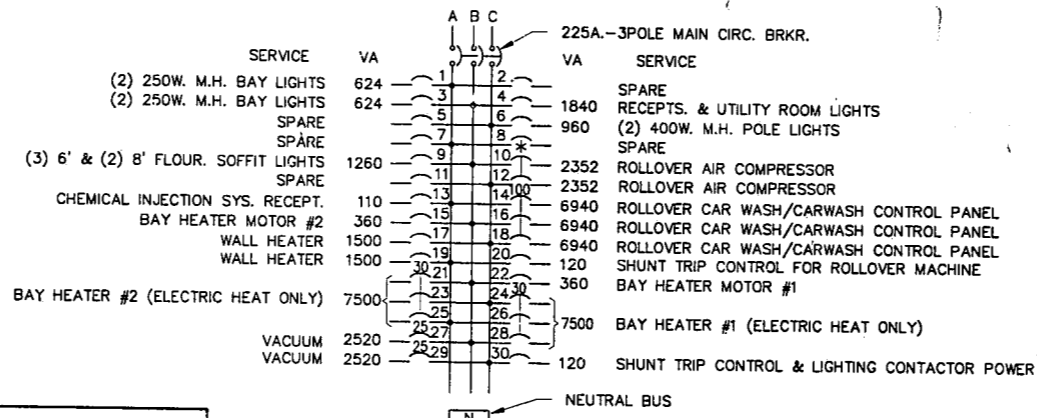


TOTAL CONNECTED VOLT AMPS = 54,942  
 TOTAL CONNECTED LOAD AMPS = 152.7  
 $\frac{54,942}{208 \times 1.73} = 152.7$

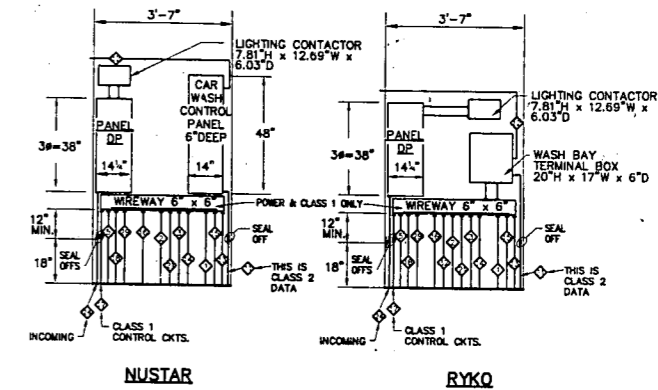


**DISTRIBUTION PANEL "DP"**  
N.T.S.

\* 20A.-2P. SQUARE "D" #Q0220-Q01PL FOR 1HP  
40A.-2P. SQUARE "D" #Q0240-Q01PL FOR 3HP

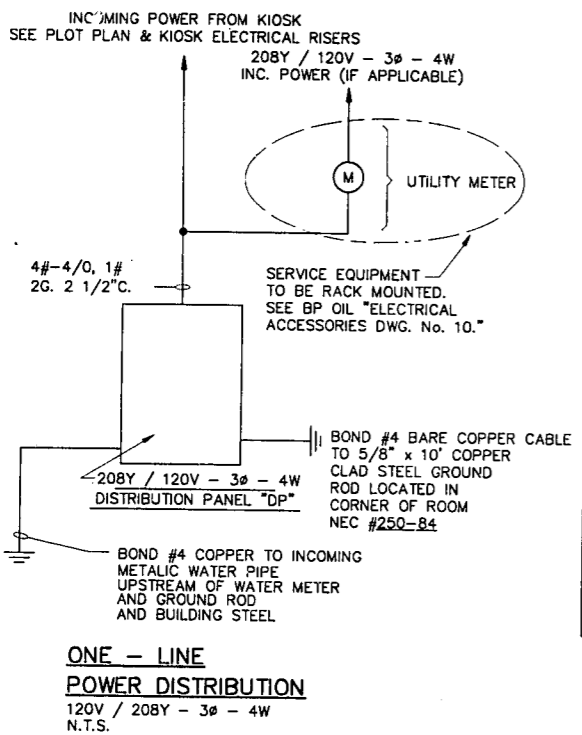
- NOTE:**
- PANEL, SQUARE "D" #Q0440M225-Q0C440MS-PK23GTA
  - 20A.-1POLE CIRC. BRKR'S. SQUARE "D" #Q0120-Q01PA
  - 100A.-3POLE CIRC. BRKR. W/ SHUNT TRIP, SQUARE "D" #Q03100-1021-Q01PL
  - 30A.-1POLE CIRC. BRKR'S W/SHUNT TRIP, SQUARE "D" #Q0130-Q01PA
  - 30A.-3POLE CIRC. BRKR'S. SQUARE "D" #Q0330-Q01PL
  - 25A.-1POLE CIRC. BRKR'S. SQUARE "D" #Q0125-Q01FA

**120/208Y VOLT, 4 WIRE, THREE-PHASE SERVICE  
(VOYAGER INSTALLATIONS ONLY)**

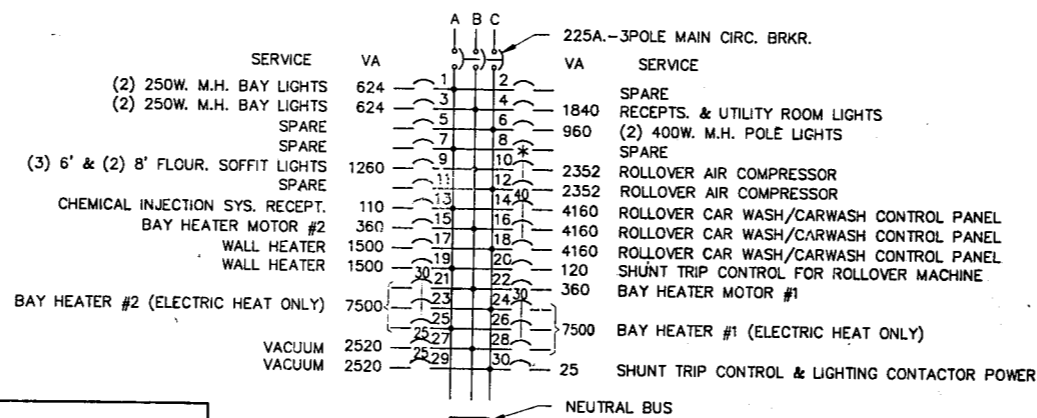


**ELEVATION**  
N.T.S.  
(SUPPORT ALL PANELS W/UNISTRUT)

**NOTE:**  
◇ CONDUIT - SEE DRAWING 7/7



TOTAL CONNECTED VOLT AMPS = 46,507  
 TOTAL CONNECTED LOAD AMPS = 129.3  
 $\frac{46,507}{208 \times 1.73} = 129.3$

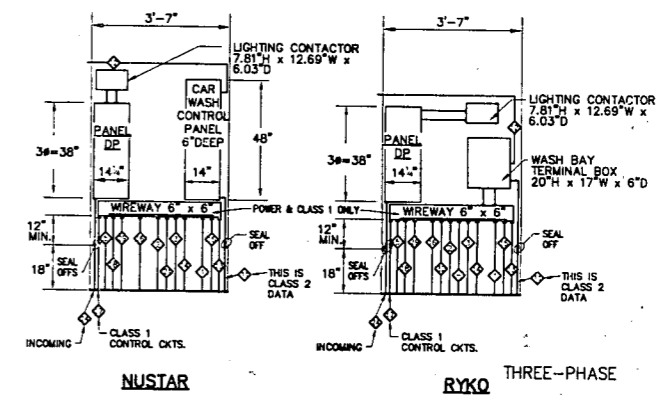


**DISTRIBUTION PANEL "DP"**  
N.T.S.

\* 20A.-2P. SQUARE "D" #Q0220-Q01PL FOR 1HP  
40A.-2P. SQUARE "D" #Q0240-Q01PL FOR 3HP

- NOTE:**
- PANEL, SQUARE "D" #Q0440M225-Q0C440MS-PK23GTA
  - 20A.-1POLE CIRC. BRKR'S. SQUARE "D" #Q0120-Q01PA
  - 30A.-3POLE CIRC. BRKR'S. SQUARE "D" #Q0330-Q01PL
  - 25A.-1POLE CIRC. BRKR'S. SQUARE "D" #Q0125-Q01FA
  - 40A.-3POLE CIRC. BRKR. W/SHUNT TRIP, SQUARE "D" #Q0340-1021-Q01PL

**120/208Y VOLT, 4 WIRE, THREE-PHASE SERVICE  
(NON-VOYAGER INSTALLATIONS)**



**ELEVATION**  
N.T.S.  
(SUPPORT ALL PANELS W/UNISTRUT)

**NOTE:**  
◇ CONDUIT - SEE DRAWING 7/7

|  |                    |         |     |
|--|--------------------|---------|-----|
| <b>BP OIL COMPANY</b>  |                    |         |     |
| RETAIL MARKETING<br>DESIGN AND ENGINEERING<br>200 PUBLIC SQUARE<br>CLEVELAND, OHIO 44114 |                    |         |     |
| 3620 ROLLOVER CAR WASH<br>RIGHT HAND ENTRANCE<br>THREE-PHASE<br>ELECTRICAL<br>DETAILS    |                    |         |     |
| DWG. No.: 4-3620 S   | 6/7                | REV.: 3 |     |
| SCALE: AS NOTED  | MADE BY: BMD (927) |         |     |
| DATE: APRIL 25, 1989   | CHECKED BY: R.C.B. |         |     |
| REVISIONS  | DATE               | DNW     | CKD |
| COMBINATION VOYAGER AND<br>NON-VOYAGER PACKAGE   | 4-17-89            |         |     |
| MUD/GREASE TRAP  | 4-28-89            |         |     |
| ELECTRICAL REVISIONS   | 5-1-89             |         |     |

DRG-6/18/89