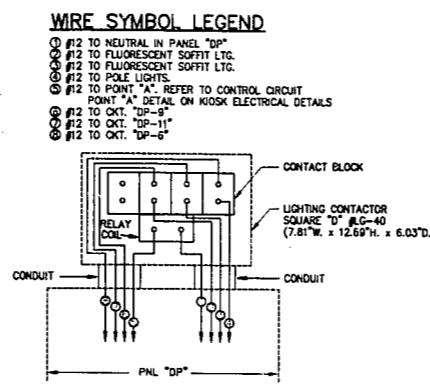
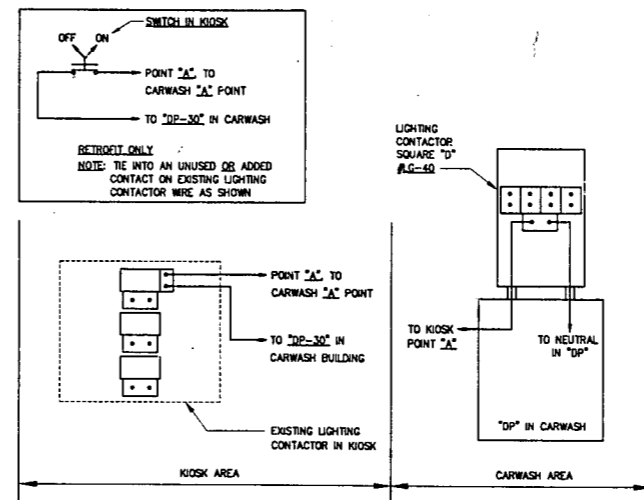


ELEVATION
SCALE: 3/8" = 1'-0"

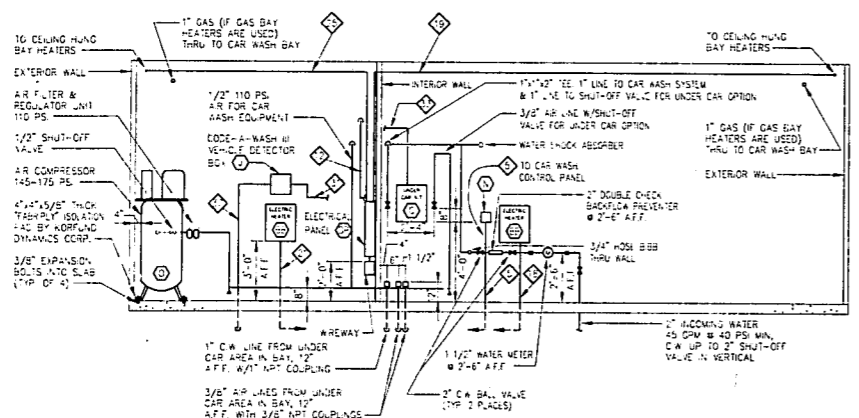


WIRING DIAGRAM FOR LIGHTING CONTACTOR IN ROOM #103
N.T.S.



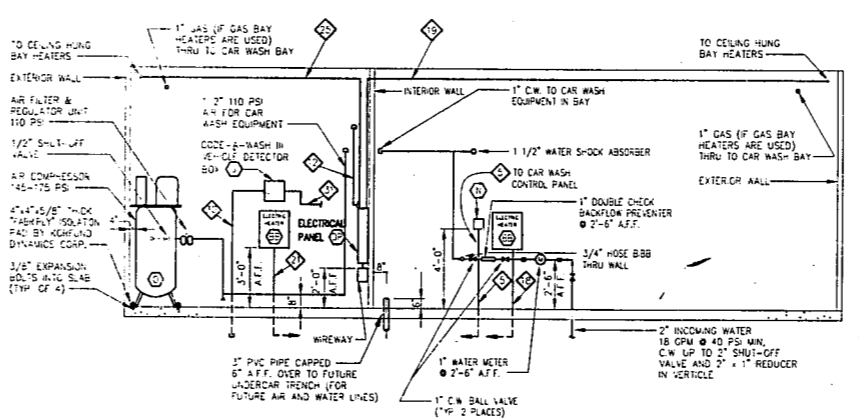
W/D FOR LIGHTING CONTACTOR CONNECTIONS
N.T.S.

| CONDUIT SCHEDULE | | | | | | |
|------------------|--------------------------------------|-------------------------------------|--------------------|-----------------|---------------------------|--|
| CONDUIT NO. | TO | FROM | ABOVE/BELOW GROUND | CONDUIT SIZE | SIZE & NO. OF WIRES | NOTES |
| 1 | COIN BOX | CAR WASH PNL | BELOW | 1/2" | 5 #14, 1 #14G | * |
| 2 | STOP/GO LIGHT | CAR WASH PNL | BELOW | 1/2" | 4 #14, 1 #14G | CONTRACTOR TO PROVIDE JUNCTION BOX BY 1" UP AT STOP/GO LIGHT |
| 3 | KILL SWITCH | CAR WASH PNL | BELOW | 1/2" | 2 #14, 1 #14G | CONTRACTOR TO PROVIDE JUNCTION BOX BY 1" UP AT STOP/GO LIGHT |
| 5 | CHEMICAL RIL JUNCTION BOX | CAR WASH PNL | BELOW | 1/2" | 5 #14, 1 #14G | CONTRACTOR TO PROVIDE JUNCTION BOX BY 1" UP AT STOP/GO LIGHT |
| 10 | RYKO DOOR KIT | CAR WASH PNL | ABOVE | RYKO TO INSTALL | RYKO TO WIRE | |
| 11 | KIOSK | CAR WASH PNL | BELOW | 1" | 15 PR #22 | BELOW #22 CO. UP OF WIRE IN CAR WASH PANEL TO TERMINAL IN WASH BAY. SEE CAR WASH PANEL FOR RYKO KIT WIRE TERMINAL WIRE |
| 12 | CAR WASH BAY | CAR WASH PNL | ABOVE | 1 1/2" | EMPTY | |
| 13 | AREA LIGHTS | PNL "DP" | BELOW | 3/4" | 2 #12, 1 #12G | |
| 14 | AREA LIGHTS | PNL "DP" | BELOW | 3/4" | 2 #12, 1 #12G | |
| 15 | VACUUM | PNL "DP" | BELOW | 3/4" | 2 #10, 1 #12G | |
| 16 | VACUUM | PNL "DP" | BELOW | 3/4" | 2 #10, 1 #12G | |
| 17 | KIOSK LIGHTING & RELAY (SEE DRAWING) | PNL "DP" | BELOW | 1" | 3 #12, 1 #12G | |
| 18 | CHEMICAL ROOM WALL HTR. "B" | PNL "DP" | BELOW | 1/2" | 2 #12, 1 #12G | |
| 19 | BAY HEATER | PNL "DP" | ABOVE | 3/4" | THREE-PHASE 4 #10, 1 #10G | |
| 21 | ELECTRICAL ROOM WALL HTR. "B" | PNL "DP" | BELOW | 1/2" | 2 #12, 1 #12G | |
| 22 | AIR COMPRESSOR | PNL "DP" | ABOVE | 1/2" | 2 #12, 1 #12G, 1 HP MOTOR | |
| 23 | BAY LIGHTS | PNL "DP" | ABOVE | 3/4" | 2 #8, 1 #10G, 3 HP MOTOR | |
| 24 | KIOSK PWR. PNL | PNL "DP" | BELOW | 2 1/2" | THREE PHASE 4 #10, 1 #10G | |
| 25 | BAY HEATER | PNL "DP" | ABOVE | 3/4" | THREE PHASE 4 #10, 1 #10G | |
| 27 | EXTERIOR FLUOR. LIGHTS | PNL "DP" | ABOVE | 1/2" | 2 #12, 1 #12G | |
| 29 | TREASURY SWITCH JUNCTION BOX | CAR WASH PANEL | BELOW | 1/2" | 4 #14, 1 #14G | CONTRACTOR TO PROVIDE JUNCTION BOX BY 1" UP AT STOP/GO LIGHT |
| 30 | CODE-A-WASH II JUNCTION BOX | CODE-A-WASH II VEHICLE DETECTOR BOX | BELOW | 1/2" | 2 #14, 1 #14G | FOR RYKO EQUIPMENT ONLY |
| 31 | CODE-A-WASH II VEHICLE DETECTOR BOX | WASH BAY TERMINAL BOX | ABOVE | 1/2" | 8 #14, 1 #14G | FOR RYKO EQUIPMENT ONLY |
| 32 | INSTRUCTION SIGN | WASH BAY TERMINAL BOX | BELOW | 1" | 15 PR #22 | SAME CABLE AS FIT ABOVE |
| 33 | UNDER CAR KIT | WASH BAY TERMINAL BOX | ABOVE | 1/2" | 5 #18, 1 #18G | ONLY REQ'D IF UNDER CAR OPTION USED |



ELEVATION
(VOYAGER INSTALLATIONS ONLY)
SCALE: 1/4" = 1'-0"

GENERAL NOTE:
SEE DWG. #5/7 FOR MATERIAL SCHEDULE



ELEVATION
(NON-VOYAGER INSTALLATIONS)
SCALE: 1/4" = 1'-0"

GENERAL NOTE:
SEE DWG. #5/7 FOR MATERIAL SCHEDULE

G.C. RESPONSIBLE FOR TOTAL SYSTEM INSTALLATION

* CONDUIT #1 - CONDUIT TO BE RIGID GALV. STEEL & SHALL BE BONDED TO INSURE CONTINUOUS ELECTRICAL PATH. CONDUIT SHALL ALSO BE GROUNDED WITH #4 AWG STRANDED WIRE TO COIN BOX AND TO THE METAL WALL PANEL AT THE WIREWAY.

** REFER TO SPECIFICATION SHEET/SUPPLIED BY G.C.

NOTE: G.C. TO NUMERICALLY TAG EACH END OR COLOR CODE ALL WIRES AND IS RESPONSIBLE FOR VERIFYING THAT THE CAR WASH MANUFACTURERS INSTALLATION COMPLIES WITH ALL CODES.

BP OIL COMPANY
RETAIL MARKETING
DESIGN AND ENGINEERING
200 PUBLIC SQUARE
CLEVELAND, OHIO 44114

3620 ROLLOVER CAR WASH
RIGHT HAND ENTRANCE
THREE-PHASE
ELECTRICAL
CONDUIT SCHEDULE AND DETAILS

DWG. No.: 4-3620 S 7/7 REV: 3

SCALE: AS NOTED MADE BY: BMD (927)

DATE: APRIL 25, 1989 CHECKED BY: R.C.B.

| REVISIONS | DATE | DWN | CRD |
|---|---------|-----|-----|
| COMBINATION VOYAGER AND NON-VOYAGER PACKAGE | 4-17-89 | | |
| MUD/GREASE TRAP | 4-28-89 | | |
| ELECTRICAL REVISIONS | 6-1-89 | | |

DDA 6/1/85