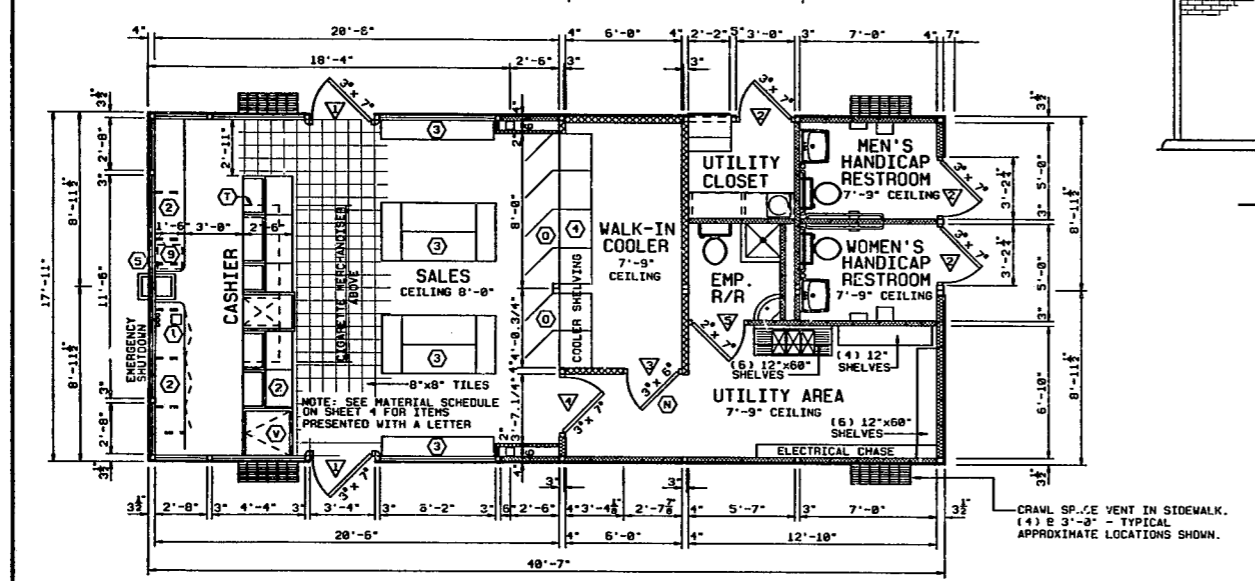
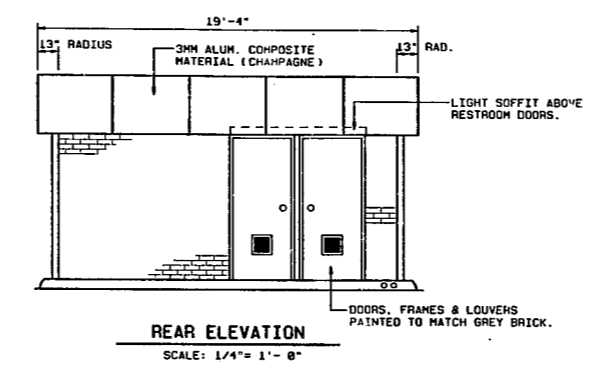


- LEGEND**
- 2", 3", & 4" PREFIN. LAMINATED WALL PANEL W/POLYISOCYANATE FOAM CORE.
  - 3" PREFIN. RIB PAN WALL PANELS WITH R11 BATT INSUL. (EXTERIOR)
  - 3" PREFIN. RIB PAN INTERIOR WALLS WITH R11 BATT INSULATION.



**FLOOR PLAN**  
SCALE: 1/4" = 1'-0"



**REAR ELEVATION**  
SCALE: 1/4" = 1'-0"

**INTERIOR FINISH SCHEDULE**

|          |   |
|----------|---|
| FLOORS   | PEPPER GRANITE PORCELAIN PAVER  |
| BASE     | MERCER 4" VINYL COVE BASE #217  |
| WALLS    | PREFINISHED STEEL, WHITE  |
| CEILINGS | WHITE 2x4 GRID (WHITE ARMSTRONG MINABOARD HL #846 IN FASTFOOD)  |
| CABINETS | WILSON ART D-98-6 NORTH SEA GREY COUNTERTOPS<br>WILSON ART D-98-6 NORTH SEA GREY CASH REGISTER COUNTER UNIT |

**DESIGN LOADS**

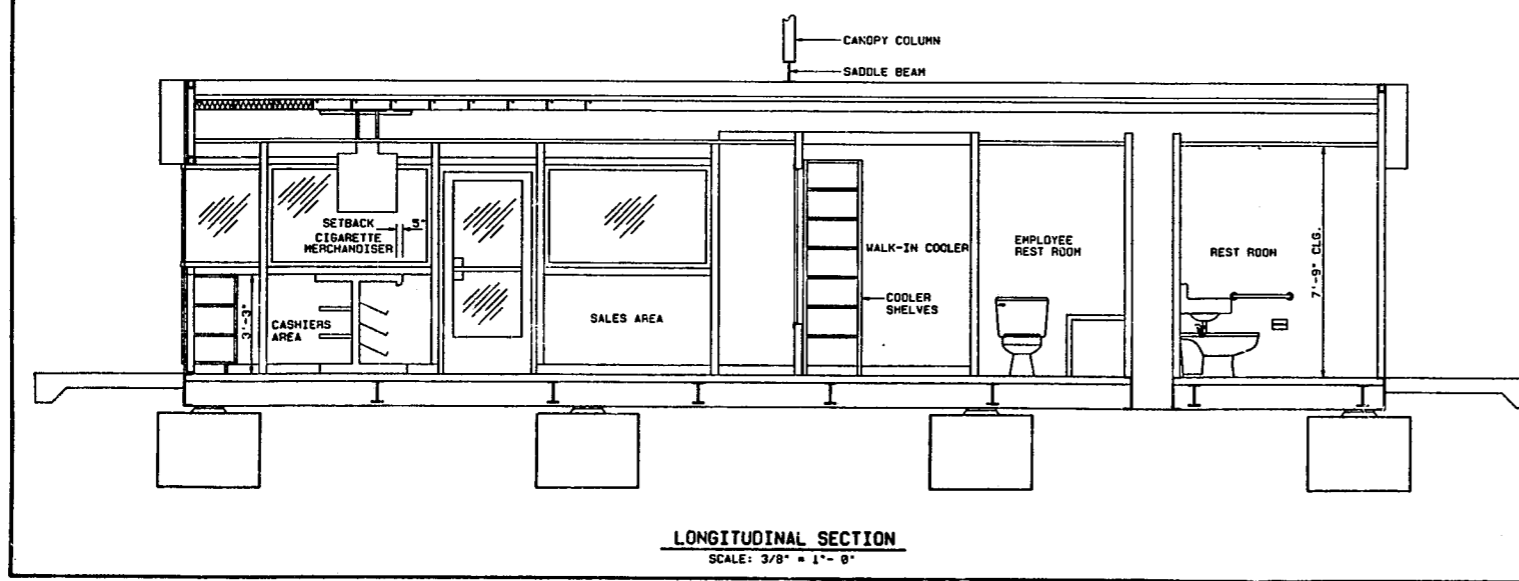
|           |                    |
|-----------|--------------------|
| DEAD LOAD | = 40 P.S.F. FLOOR  |
|           | = 13 P.S.F. ROOF   |
| LIVE LOAD | = 180 P.S.F. FLOOR |
|           | = 40 P.S.F. ROOF   |
| WIND LOAD | = 29 P.S.F.        |
|           | = 120 MPH          |

**DOOR SCHEDULE**

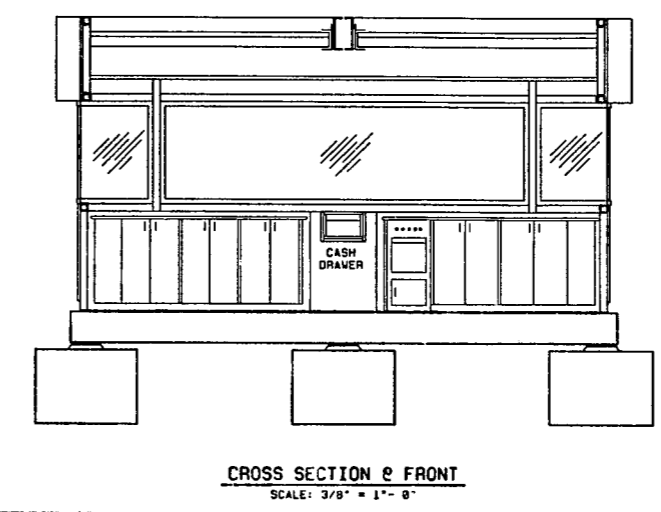
| MARK | W     | H     | SIZE   | QTY. | MATERIAL    | HARDW. NO. | REMARKS        |
|------|-------|-------|--------|------|-------------|------------|----------------|
| 1    | 3'-0" | 7'-0" | 1 1/2" | 2    | ALUM. GLASS | 1          | CLOSER         |
| 2    | 3'-0" | 7'-0" | 1 1/2" | 1    | HOLLOW MET. | 3          | WEATHERSTRIP   |
| 3    | 3'-0" | 6'-0" | 1 1/2" | 1    | HOLLOW MET. |            | COOLER SPECIAL |
| 4    | 3'-0" | 7'-0" | 1 1/2" | 1    | HOLLOW MET. | 2          |                |
| 5    | 2'-0" | 7'-0" | 1 1/2" | 1    | HOLLOW MET. | 2          |                |

**DOOR HARDWARE SCHEDULE**

| HARDW. NO. | HINGE                         | CLOSER            | LOCK                               | PULL                     | GLASS/LOUVER     |
|------------|-------------------------------|-------------------|------------------------------------|--------------------------|------------------|
| 1          | 1 1/2" PR BUTTS BY DOOR MFG.  | YALE #55 OR EQUAL | BEST #1-F-76 LOCK CYL W/THUMB TURN | BY DOOR MFG.             | 1/2" CLEAR TEMP. |
| 2          | 1 1/2" PR BUTTS STANLEY#38179 | YALE              | BEST #617K                         | BALDWIN #2347 288 OR EQ. | LOUVER           |
| 3          | 1 1/2" PR BUTTS STANLEY#38179 | YALE              | BEST #617K                         | BALDWIN #2347 288 OR EQ. |                  |



**LONGITUDINAL SECTION**  
SCALE: 3/8" = 1'-0"



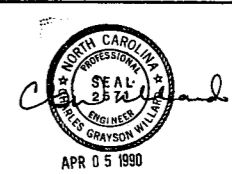
**CROSS SECTION @ FRONT**  
SCALE: 3/8" = 1'-0"

**MATERIAL SCHEDULE**

S = SUPPLIER  
I = INSTALLER  
O = OWNER  
GC = GENERAL CONTRACTOR  
BM = BUILDING MANUFACTURER

**EQUIPMENT SCHEDULE**

| NO. | EQUIPMENT SCHEDULE                      | QTY.  | S  | I  |
|-----|---|-------|----|----|
| 1   | TALKPHONE INTERCOM SYSTEM #288          | 1     | BM | BM |
| 2   | LAMINATED WOOD COUNTERS                 | 1 LOT | BM | BM |
| 3   | MERCHANDIZER SHELVING                   | 1 LOT | O  | O  |
| 4   | COOLER/FREEZER SHELVING 5 SHELVES/DOOR  | 1 LOT | BM | BM |
| 5   | SHURE DUO DRAWER #678155                | 1     | BM | BM |
| 6   | MICROWAVE                               | 1     | O  | O  |
| 7   | COFFEE MAKER                            | 1     | O  | O  |
| 8   | EXTERIOR ADVERTISING POSTER GRIP FRAMES | 4     | O  | GC |
| 9   | TIDEL TACC II SAFE #2388                | 1     | BM | BM |
| 10  | CASH REGISTER                           | 2     | O  | O  |



**BP OIL COMPANY**  
RETAIL MARKETING  
DESIGN AND ENGINEERING  
200 PUBLIC SQUARE  
CLEVELAND, OHIO 44115

**BEAMAN CORPORATION**  
800 WEST SMITH STREET  
GREENSBORO, NORTH CAROLINA 27420  
PHONE (919) 271-1488

JOB LOCATION: \_\_\_\_\_ JOB NO.: \_\_\_\_\_

**B733 MART**  
18'-0" x 41'-3"  
PLAN & ELEVATIONS

DWG. NO. 4B733SD2C 2/5 REV.

| SCALE     | AS NOTED               | MADE BY    | MLV  |      |     |
|-----------|------------------------|------------|------|------|-----|
| DATE      | 2-5-98                 | CHECKED BY | DATE | DWN  | CKD |
| REVISIONS | BRICK JOB - CARY, N.C. |            | DATE | 3/98 | DJ  |