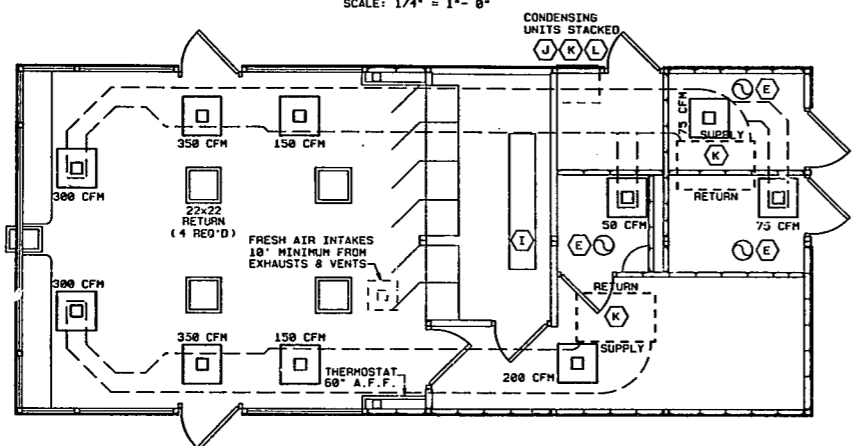
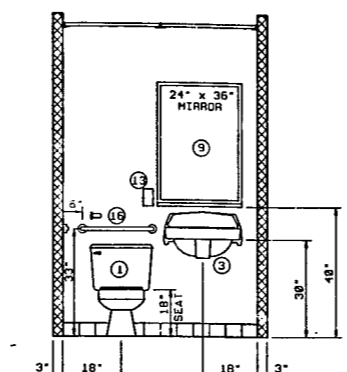


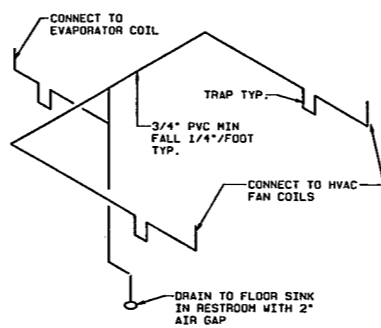
**FLOOR PLAN**  
SCALE: 1/4" = 1'-0"



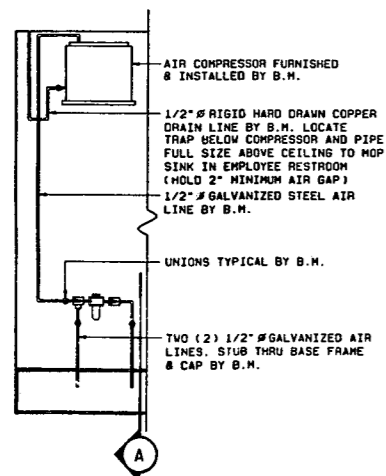
**HVAC PLAN**  
SCALE: 1/4" = 1'-0"



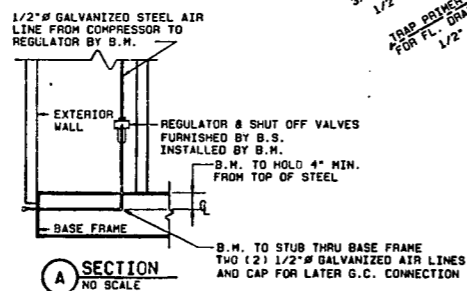
**TYP. ELEVATION OF PUBLIC R/R**  
SCALE: 1/2" = 1'-0"



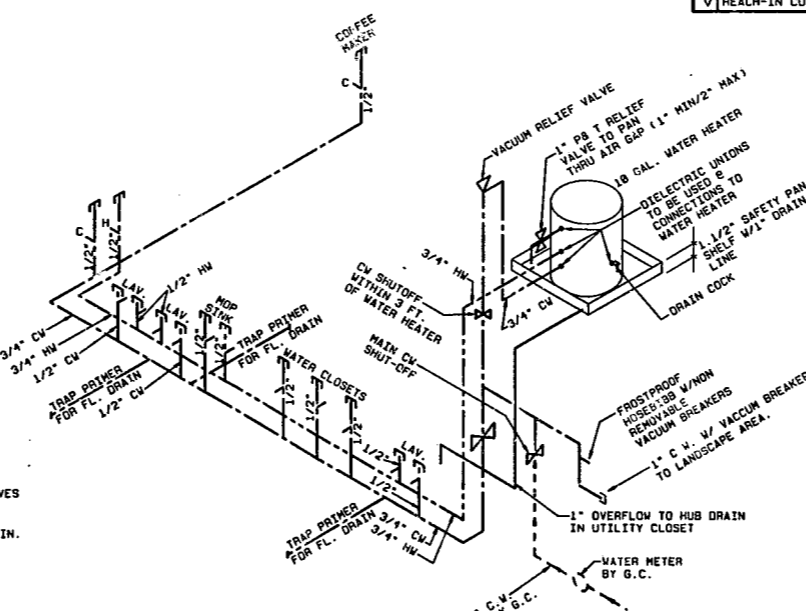
**CONDENSATE DRAIN SCHEMATIC**  
NO SCALE



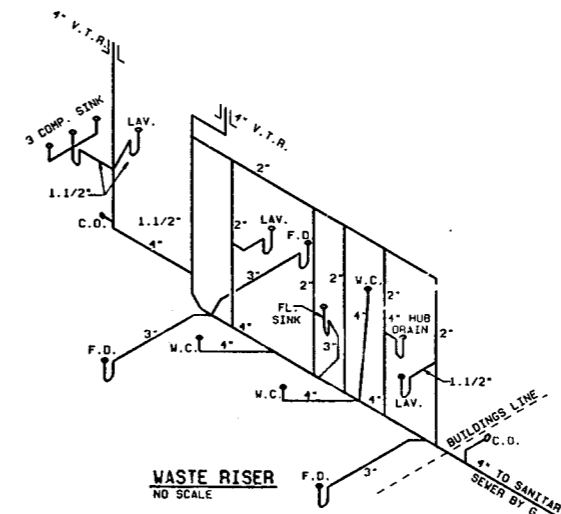
**AIR COMPRESSOR INSTALLATION DETAIL**  
NO SCALE



**SECTION A**  
NO SCALE



**SUPPLY RISER**  
NO SCALE



**WASTE RISER**  
NO SCALE

**MATERIAL SCHEDULE**

BM = BUILDING MANUFACTURER  
GC = GENERAL CONTRACTOR  
O = OWNER

NO.	DESCRIPTION	QTY.	S	I
A	LITHONIA LIGHTING FLUORESCENT TROFFER #GS-240-PL-120 WITH WHITE PLASTIC CUBE LENS & (2) 40 WATT LAMPS.	13	BM	BM
B	PRESOLITE INCANDESCENT SPOT LT. FIXTURE # PAR-36-TA-62SLVL SPECULAR CLEAR ALZAK CONE W/ ADJUSTABLE LAMP, HEXAL LOUVER, & 75 WATT LAMP OR EQUAL.	4	BM	BM
C	WHITEWAY FLUORESCENT LIGHT FIXTURE #20R-20P WITH PLASTIC LENS COVER & 2 LAMPS.	2	BM	BM
D	BROAD COMBINATION EXHAUST FAN / LIGHT #657 WITH 75W BULB, 4" DUCT, & ROOF CAP. (78 CFM) OR EQ.	3	BM	BM
E	BROAD EXHAUST FAN # 689 WITH 3" DUCT, ROOF CAP. & 15 MINUTE TIMER CONTROL. (60 CFM) OR EQUAL	N/A	BM	BM
F	INTERMATIC INC. 15 MINUTE TIMER CONTROL FOR RESTROOM EXHAUST FANS, OR EQUAL.	3	BM	BM
G	B.C.C.I. AIR COMPRESSOR # 10T81C (240/1/68)	ONE	BM	BM
H	WATER HEATER, ELECTRIC, 1500 WATT 10 GALLON ENERGY EFFICIENT, A.O. SMITH	ONE	BM	BM
I	MOQUAY COOL FAN COIL # RCL - 1600M11 (115/1/68)	ONE	BM	BM
J	CARRIER COOLER CONDENSING UNIT # JH-102-DMSA-1 (240/1/68)	ONE	BM	BM
K	CARRIER FAN COIL UNIT # 40-DD-030300-EH W/ 10KW HEAT STRIP (240/1/68)	2	BM	BM
L	CARRIER CONDENSING UNIT # 30-GN-024 (240/1/68)	2	BM	BM
M				
N	ANTHONY COOLER SERVICE DOOR WITH FRAME HEATER (NO GLASS)	ONE	BM	BM
O	ANTHONY REACH-IN COOLER DOORS WITH LIGHTS & FRAME HEATERS (1-FOUR DOOR SET & 1-TWO DOOR SET)	ONE SET EACH	BM	BM
P				
Q	LITHONIA LIGHTING EXIT SIGN #XSM-1REL WITH BATTERY BACK-UP & CHARGER (WHITE IN COLOR)	2	BM	BM
R	ALKCO #1170F-24" LONG STRIP LT. MTD. UNDER COUNTER W/ACRYLIC LENS. EXTENSION CORD, PLUG, & T15-13WATT LAMP OR EQUAL.	ONE	BM	BM
S	ALKCO #2140F-48" LONG STRIP LT. MTD. UNDER COUNTER W/ACRYLIC LENS. EXTENSION CORD, PLUG, & T15-13WATT LAMP OR EQUAL.	ONE	BM	BM
T	OVERHEAD CIGARETTE MERCHANDIZER WITH LIGHTS	ONE	BM	BM
U	WALL MOUNTED EXTERIOR LIGHT FIXTURE WITH PHOTOCELL, CONNECT TO CIRCUIT AHEAD OF SWITCH.	ONE	BM	BM
V	REACH-IN COOLER	ONE	BM	BM

**PLUMBING SCHEDULE**

NO.	QTY.	ITEM	MANUFACTURER	CATALOG NUMBER	FURN.	INST.	REMARKS
1	2	WATER CLOSET	AMERICAN STD.	2100.400	BS	BS	18" HIGH/OPEN FRONT RIM
2	1	WATER CLOSET	AMERICAN STD.	2100.395	BS	BS	
3	2	LAVATORY	AMERICAN STD.	9141.011	BS	BS	W/LEVER HANDLES
4	1	LAVATORY	AMERICAN STD.	0451.011	BS	BS	CORNER
5	5	FLOOR DRAIN	ZURN	ZN-450-50-3C-P	BS	BS	W/TRAP PRIMER
6	1	HOP STNK	BEAMAN		BS	BS	
7	1	SERVICE SINK	AMTEKO	07050520	BS	BS	3/COMP/W/DRAIN
8	1	HUB DRAIN		PVC	BS	BS	FOUNTAIN DRINK
9	2	MIRROR	BOBRICK	0166-2436	BS	BS	W/SHELF
10	1	MIRROR	BOBRICK	0166-1624	BS	BS	W/SHELF
11	3	WASTE RECEPT.	BOBRICK	0279	BS	BS	
12	3	TOWEL DISP.	BOBRICK	0262	BS	BS	
13	3	SOAP DISP.	BOBRICK	0112	BS	BS	
14	3	TISSUE DISP.	BOBRICK	0665	BS	BS	
15	2	GRAB BAR	BOBRICK	06206 x 48	BS	BS	1.1/2" #
16	2	GRAB BAR	BOBRICK	06206 x 24	BS	BS	1.1/2" #
17	1	WATER METER			GC	GC	
18	1	FEM-NAP DISP.	BOBRICK	0270	BS	BS	
19	1	HAND SINK	ELKAY	PSLVR-1917-C	BS	BS	
20	1	HOSE BIBB			BS	BS	FROSTPROOF W/VACUUM BREAKER

**HVAC NOTES**

- ALL DUCTWORK TO BE SHEET METAL CONSTRUCTION AND MANUFACTURED IN ACCORDANCE WITH INDUSTRY STANDARDS FOR EXTERIOR USE, MINIMUM 24 GAGE, AND SHALL BE SEALED WEATHERTIGHT.
- ALL TURNS ARE TO INCLUDE TURNING VEINS OR ELBOWS IN ORDER TO PROVIDE PROPER FLOW AND BALANCE.
- ALL DUCTS TO BE INSULATED ON THE INSIDE TO A MINIMUM OF R-4 VALUE.
- MOTOR TO HAVE A SEPARATE MEANS OF DISCONNECT WITHIN SIGHT OF THE UNIT.
- EXHAUST FANS TO BE SWITCHED WITH RESTROOM LIGHTS
- ALL SUCTION LINES TO BE INSULATED WITH 1/2" NOMINAL CLOSED CELL INSULATION.
- ALL LIQUID & DRAIN LINES TO BE INSULATED INSIDE COOLER AND FREEZER TO PREVENT FREEZING.

**PLUMBING NOTES**

- B.S. SHALL FURNISH AND INSTALL ALL NECESSARY FIXTURES, FAUCETS, SUPPLY LINES, WASTE LINES, TRAPS, VALVES, STOPS & ESCUTCHEONS TO COMPLETE PLUMBING WITHIN CONFINES OF BUILDING.
- GENERAL CONTRACTOR SHALL MAKE ALL NECESSARY CONNECTIONS TO WATER AND SEWER MAINS.
- GENERAL CONTRACTOR IS RESPONSIBLE FOR ALL NECESSARY PLUMBING PERMITS.
- PLUMBING ACCESS LOCATIONS WILL BE SHOWN ON FOOTING PLAN
- BUILDING VENT & SOIL PIPE WILL BE PVC SCHEDULE 40.
- WATER SUPPLY LINES WILL BE COPPER ABOVE SLAB TYPE "L", BELOW SLAB TYPE "K" WITH NO JOINTS BELOW SLAB.



APR 05 1990

SEAL

**BP OIL COMPANY**  
RETAIL MARKETING  
DESIGN AND ENGINEERING  
288 PUBLIC SQUARE  
CLEVELAND, OHIO 44115

**BEAMAN CORPORATION**  
800 WEST SMITH STREET  
GREENSBORO, NORTH CAROLINA 27420  
PHONE (919) 271-1400

JOB LOCATION: B-733 MART  
JOB NO.: 18'-0" x 41'-3"

**B-733 MART**  
18'-0" x 41'-3"  
PLUMBING AND HVAC

DWG. NO.	48733502C	3	5	REV.
SCALE	AS NOTED	MADE BY	REK	
DATE	02-07-90	CHECKED BY		
REVISIONS		DATE	DWN	CKD
	BRICK JOB - CART, N.C.	3/90	DJ	