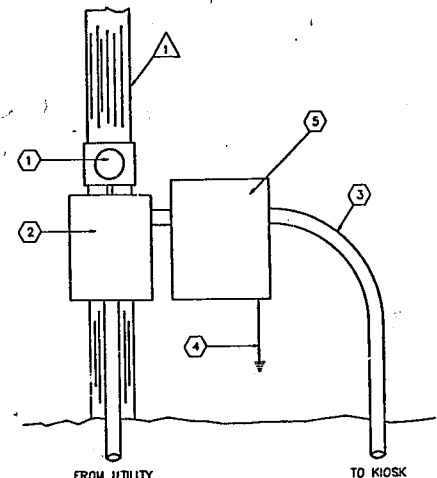


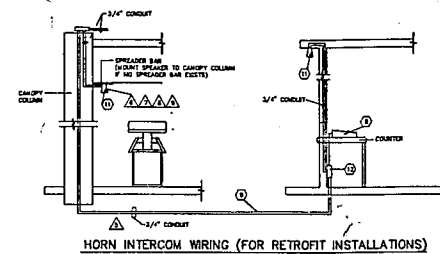
**ALTERNATE PEDESTAL MOUNT FOR SERVICE EQUIPMENT**  
(NO SCALE)



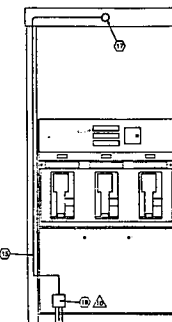
**PREFERRED UTILITY POLE MOUNT FOR SERVICE EQUIPMENT**  
(NO SCALE)

OPTIONS *	3 PHASE 120/208V (4-WIRE) **		1 PHASE 120/240V (3-WIRE)	
	CONDUIT	CABLES	CONDUIT	CABLES
1. BUILDING ONLY	1 EA. 2.5"	4 EA. #250 MCM (3 HOT, 1 NEUTRAL)	1 EA. 2"	3 EA. #250 MCM (2 HOT, 1 NEUTRAL)
2. BUILDING WITH THE FOLLOWING COMBINATIONS:				
A. ROLL OVER WASH (ROW)	1 EA. 2.5"	4 EA. #250 MCM (3 HOT, 1 NEUTRAL)	2 EA. 2.5"	3 EA. #350 MCM (2 HOT, 1 NEUTRAL)
B. SUPPORT BUILDING	1 EA. 2.5"	4 EA. #250 MCM (3 HOT, 1 NEUTRAL)	1 EA. 2"	3 EA. #250 MCM (2 HOT, 1 NEUTRAL)
C. HIGH RISE ID SIGN	1 EA. 2.5"	4 EA. #250 MCM (3 HOT, 1 NEUTRAL)	1 EA. 2"	3 EA. #250 MCM (2 HOT, 1 NEUTRAL)
D. SUPPORT BUILDING, ROW	1 EA. 3"	4 EA. #500 MCM (3 HOT, 1 NEUTRAL)	2 EA. 3"	3 EA. #500 MCM (2 HOT, 1 NEUTRAL)
E. HIGH RISE ID SIGN, ROW	1 EA. 3"	4 EA. #350 MCM (3 HOT, 1 NEUTRAL)	2 EA. 2.5"	3 EA. #350 MCM (2 HOT, 1 NEUTRAL)
F. HIGH RISE ID SIGN, SUPPORT BUILDING	1 EA. 3"	4 EA. #350 MCM (3 HOT, 1 NEUTRAL)	1 EA. 2.5"	3 EA. #350 MCM (2 HOT, 1 NEUTRAL)
G. HIGH RISE ID SIGN, SUPPORT BUILDING, ROW	1 EA. 3"	4 EA. #500 MCM (3 HOT, 1 NEUTRAL)	2 EA. 3.5"	3 EA. #500 MCM (2 HOT, 1 NEUTRAL)
* DEFAULT SPECIFICATION	1 EA. 3"	4 EA. #350 MCM (3 HOT, 1 NEUTRAL)	2 EA. 3.5"	3 EA. #350 MCM (2 HOT, 1 NEUTRAL)

**SITE INCOMING ELECTRICAL SERVICE DROP**



**HORN INTERCOM WIRING (FOR RETROFIT INSTALLATIONS)**  
(NO SCALE)



**INTERNAL INTERCOM WIRING (FOR NEW BUILDS / R&R SITES)** △

**MATERIAL SCHEDULE**

BM = BUILDING MANUFACTURER  
GC = GENERAL CONTRACTOR  
O = OWNER  
SC = SEPARATE CONTRACT  
S = SUPPLIER  
I = INSTALLER

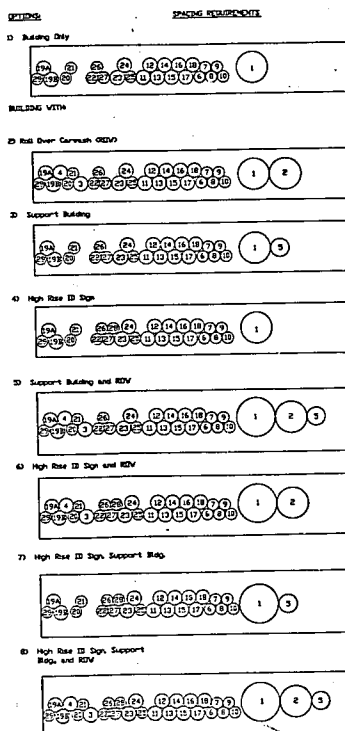
NO.	DESCRIPTION	QTY.	S	I
1	METER	1	GC	GC
2	GT CABINET (IF REQUIRED)	1	GC	GC
3	CONDUIT AND WIRE (SEE TABLE)	AS REQD	GC	GC
4	SOLID COPPER GROUND PER NEC	1	GC	GC
5	400 AMP, 3 PHASE 120/208V, (500 AMP, 1 PHASE 120/240V ONLY WHEN REQUIRED BY LOCAL CODE OR UTILITY CO.) FUSED MAIN DISCONNECT	1	GC	GC
6	GALVANIZED CHANNEL IRON (PAINT RUST RESISTANT GRAY)	AS REQD	GC	GC
7	3" X 3" X 3/16" GALVANIZED ANGLE (PAINT RUST RESISTANT GRAY)	AS REQD	GC	GC
8	8 POSITION MASTER STATION	1	O	GC
9	22 GAUGE TWISTED PAIR CABLE	AS REQD	GC	GC
10	RESERVED			
11	HORN/SPEAKER (UP TO 6 IF SUBSTATION IS UTILIZED)	AS REQD	O	GC
12	JUNCTION BOX	1	GC	GC
13	INTERCOM TERMINAL STRIP IN BACK ROOM JUNCTION BOX	1	BM	BM
14	3/4" CONDUIT CARRYING 3 CONDUCTOR, NYLAR SHIELDED CABLES, 22 GAUGE WITH 175 DEGREES F RESISTANCE, OVERALL JACKET FOR 3 CABLES 60 DEGREES C TEMPERATURE RESISTANT, NYLON STRIPPER CORD AND O.D. OF 3/16"	AS REQD	GC	GC
15	PREWIRED DISPENSER SPEAKER CONDUIT	AS REQD	O	O
16	DISPENSER SPEAKER JUNCTION BOX	AS REQD	O	O
17	SPEAKER BUILT INTO DISPENSER	AS REQD	O	O

**NOTES**

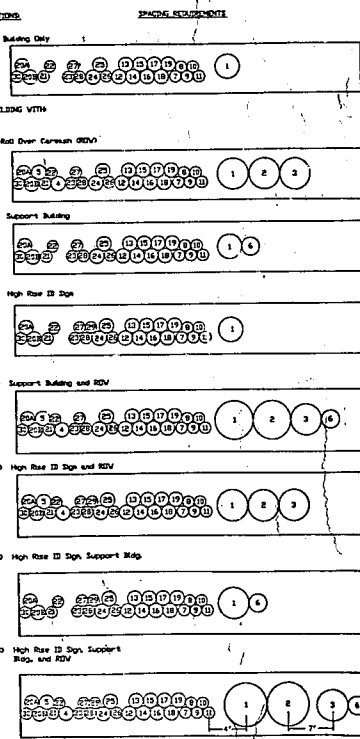
- UTILITY POLE--ATTACH EQUIPMENT PER LOCAL UTILITY COMPANY REQUIREMENTS.
- TO BE USED ONLY IF UTILITY COMPANY WILL NOT MOUNT ON UTILITY POLE.
- G.C. TO INSTALL OUTSIDE OF RUBBISH ENCLOSURE UNLESS OTHERWISE SHOWN ON PLOT PLAN.
- G.C. TO PROVIDE TEMPORARY POWER DURING BUILDING CANOPY ERECTION.
- INTERCOM WIRING MUST BE IN SEPARATE CONDUIT, SHIELDED FROM POWER WIRING & OTHER SOURCES OF INTERFERENCE.
- SPEAKER CONNECTIONS TO BE MADE WITH CRIMP CONNECTORS.
- SEE CANOPY DRAWING FOR NUMBER & LOCATION OF HORNS.
- G.C. TO MOUNT HORN & DIRECT STRAIGHT DOWN.
- SEE "SPECIAL INSTRUCTIONS FOR B.P., OIL CO. INSTALLATIONS" FOR DETAILS FURNISHED BY TALK-A-PHONE WITH EACH INTERCOM SYSTEM.
- REFER TO DISPENSER DRAWING FOR DETAIL. ALL INTERNAL BUILDING WIRING IS DONE BY BUILDING MANUFACTURER. G.C. IS ONLY RESPONSIBLE, INTERNAL TO THE BUILDING, TO THE IN TO JUNCTION BOX.

**CONDUIT POSITIONING IN BUILDING FLOOR CHASE (MINIMUM PERMITTED SPACING IS SHOWN)**

**THREE PHASE 120/208 (4-WIRE) \*\* LOCATIONS**

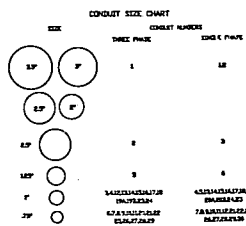


**SINGLE PHASE 120/240 (3-WIRE) LOCATIONS**

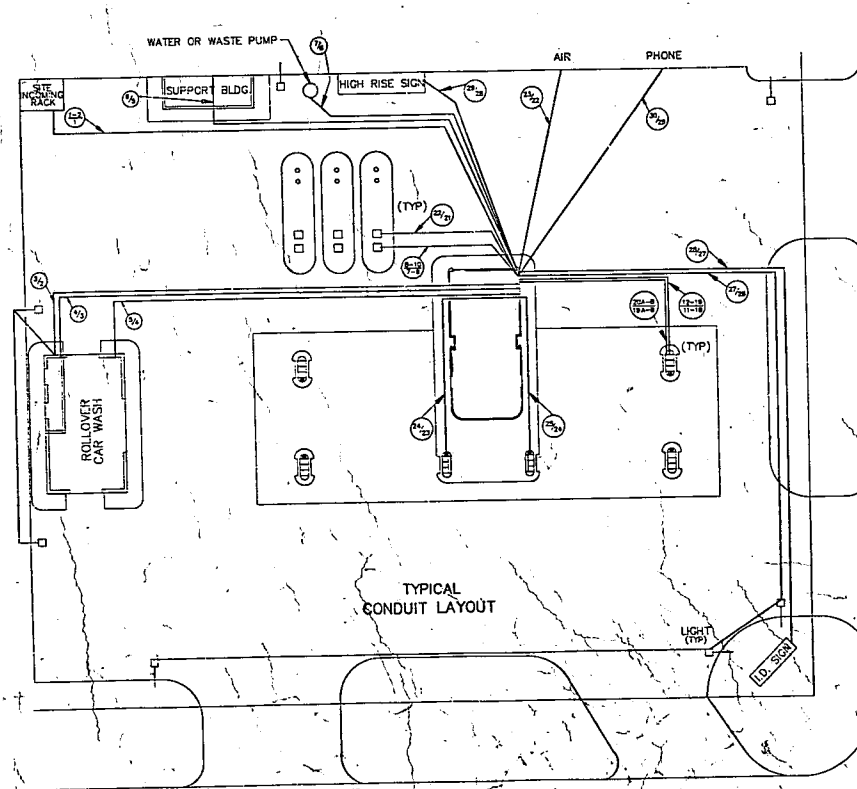


**DUCTBANK CONFIGURATIONS**

**NOTES:**  
1. SPACING VALID FOR 70 INCHES FEET OR SMALLER BUILDING SIZES.  
2. IF NO MANHOLES ARE SHOWN NO SPACING REQUIREMENTS EXIST.  
3. CONDUIT NUMBER SHOWN CORRESPOND TO THOSE USED IN THE LATEST REVISED AND CONDUIT SCHEDULE WHICH IS INCLUDED IN THE ELECTRICAL SECTION OF THE CONSTRUCTION SPECIFICATIONS.  
4. SPACING REQUIREMENTS CONFORM TO NEC SECTION 300-20.



**NOTES:**  
\* SIZE OF CONDUIT NUMBER 1 IN THREE PHASE IS 2" FOR OPTION 1, 2, 3 AND 4" FOR OPTION 5.  
\* SIZE OF CONDUIT NUMBER 1 IN SINGLE PHASE IS 1" FOR OPTION 1, 2, 3 AND 2" FOR OPTION 4, 5 AND 3" FOR OPTION 6.



**TYPICAL CONDUIT LAYOUT**

**BP OIL COMPANY**  
RETAIL MARKETING  
DESIGN AND ENGINEERING  
200 PUBLIC SQUARE  
CLEVELAND, OHIO 44114

**ELECTRICAL ACCESSORIES**

DWG. NO. 10

SCALE: \_\_\_\_\_ MADE BY: \_\_\_\_\_

DATE: 12.11.84 CHECKED BY: \_\_\_\_\_

REVISIONS:

1			
2			
3			
4			
5			
6			
7			
8			
9			
10			