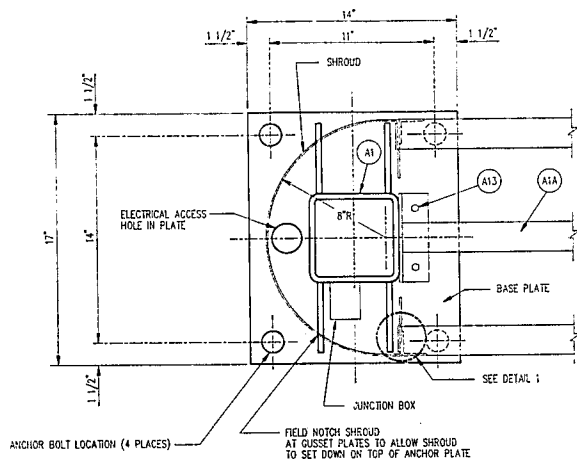
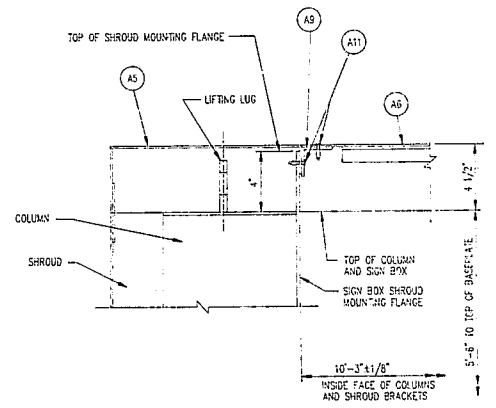


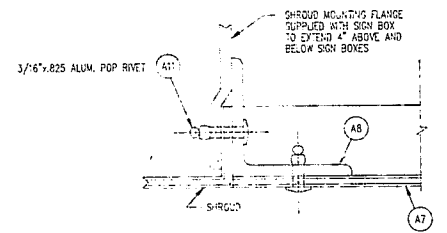
SECTION A-A  
3/16"=1"



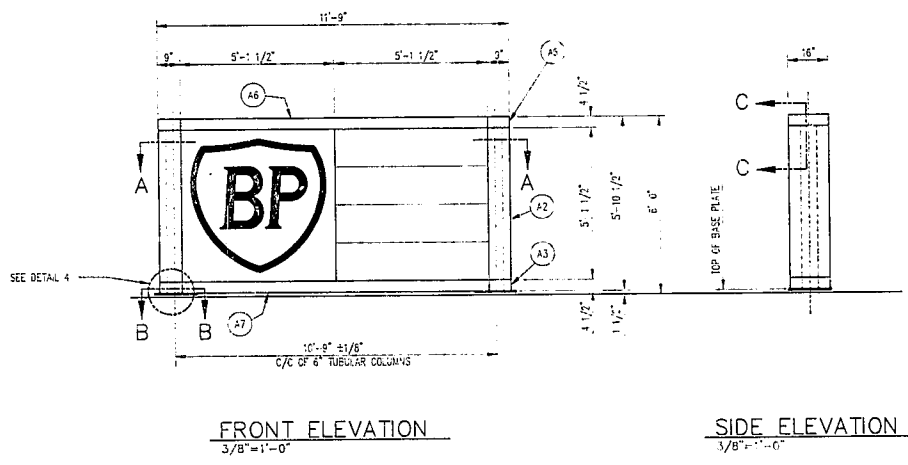
SECTION B-B  
3/16"=1"



SECTION C-C  
3/16"=1"

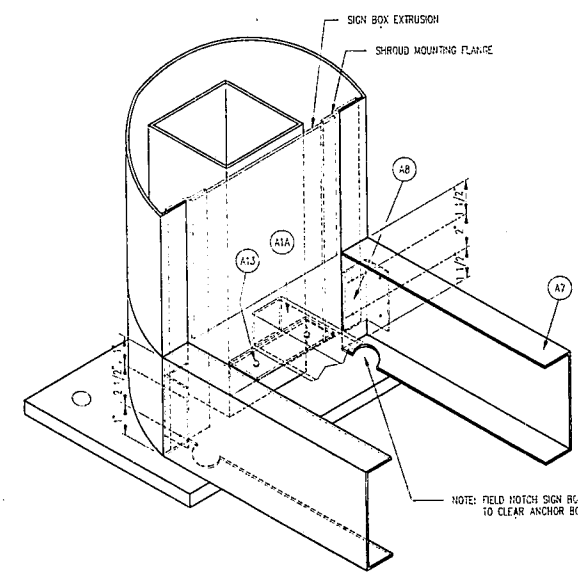


DETAIL 1  
3/4"=1"



FRONT ELEVATION  
3/8"=1'-0"

SIDE ELEVATION  
3/8"=1'-0"



DETAIL 4-- SHROUD ASSEMBLY  
3/16"=1"

# MATERIAL SCHEDULE

S = SUPPLIER  
I = INSTALLER  
O = OWNER  
CC = GENERAL CONTRACTOR  
BM = BUILDING MANUFACTURER

NO.	EQUIPMENT SCHEDULE	QTY.	S	I	O	CC	BM
A1	STRUCTURAL COLUMN #B7010012	2		T-10			GC
A1A	SIGN BOX SUPPORT ASSEMBLY #B7010013	1					
A2	SHROUD (GREEN) #02110099	2					
A3	SHROUD (CHAMPAGNE) #02110100	2					
A5	CONNECTOR TOP CAP #02110092	2					
A6	SIGN BOX COVER TOP #02110101	1					
A7	SIGN BOX COVER BOTTOM #02110102	2					
A8	SIGN BOX COVER MOUNTING ANGLES #02110048	4					
A9	SIGN BOX COVER MOUNTING ANGLES #02110047	2					
A11	3/16" DIA. X .825" DOMED HEAD POP RIVET (ALUMINUM BODY) #04000000	130					
A12	#11 DRILL BIT #98020069	2					
A13	1/2"-13x1 1/2" HEX CAP BOLT WITH LOCK WASHER AND NUT #04010065 / #0403012 / #04020007	12					

NOTE:  
IF IT BECOMES NECESSARY TO REDUCE THE HEIGHT OF THE SIGN IN THE FIELD, THE REDUCTION SHOULD BE MADE ONLY AT THE TOP OF THE STRUCTURAL COLUMNS AND THE BOTTOM OF THE LOWEST SHROUD. THE IDENTICAL DIMENSION SHOULD BE REMOVED FROM EACH PART, REPLACE THE CAP AND LIFTING LUG AFTER CUTTING THE COLUMN.

NOTE:  
KNOWING ELECTRICAL JUNCTION BOX AND COVERS LOCATED AT THE BASE OF THE SIGN IS TO BE SUPPLIED AND INSTALLED BY THE SIGN INSTALLATION CONTRACTOR. (SEE SECTION B-B)

INSTALLATION SEQUENCE AND INSTRUCTIONS

- CHECK FOUNDATION FOR CORRECT LEVEL AND ANCHOR BOLT LOCATIONS.
- ERECT STEEL COLUMNS WITH THE SITE ELECTRICAL HOLE POSITIONED TOWARD THE OUTSIDE. THE ELECTRICAL CONDUIT MUST BE ACCESSIBLE THROUGH THE HOLE IN THE COLUMN BASE PLATE. THE BASE PLATE MUST BE SET AT THE SAME LEVEL AND THE COLUMNS MUST BE PLUMB AND IN LINE WITH EACH OTHER. INSTALL THE SIGN BOX SUPPORT ASSEMBLY BETWEEN THE COLUMNS WITH (2) 1/2"-13x1 1/2" HEX CAP BOLTS ON EACH SIDE. CHECK SUPPORT ASSEMBLY FOR LEVEL AFTER INSTALLATION.
- INSTALL THE SIGN BOXES PER THE SIGN BOX MANUFACTURER'S INSTRUCTIONS AND ATTACH TO COLUMN BY BOLTING 2"x2" CLIP ANGLES TO SIGN BOX AND HOLDING THE ANGLE TO EACH SIDE OF THE COLUMN BOLT. THE SIGN BOXES TO THE 1/4" STEEL PLATE ON THE SUPPORT ASSEMBLY AT THE BOTTOM AND USE THE LOOSE 1/4" PLATE TO BOLT THE TOP OF THE SIGN BOXES TOGETHER. (THIS LOOSE 1/4" PLATE IS SHIPPED BOLTED TO THE SUPPORT ASSY.)
- MAKE ELECTRICAL CONNECTIONS TO SIGN BOXES AND TEST.
- PRE BEND THE SHROUD FLANGES TO 90° PLUS AND INSTALL THE SHROUDS STARTING AT THE BOTTOM AND WORKING TO THE TOP. THE BOTTOM SHROUD CAN BE POSITIONED BY STRETCHING AROUND THE SHROUD MOUNTING FLANGES. THE UPPER SHROUDS SHOULD BE SLID OVER THE SIGN BOX FLANGES FROM THE TOP. THE JOINTS ARE A SLIP FIT BUT CONDITION WITH A LIGHT F.T. MAINTAINED AROUND THE ENTIRE RADII. AFTER THE JOINTS ARE ALIGNED FASTEN THE FLANGE OF THE SHROUDS ON EACH SIDE TO THE SIGN BOX FLANGE USING 3/16" DIA. X .825" POP RIVETS 24" ON CENTER. THE 15" OUTSIDE SHROUD DIMENSION MUST BE MAINTAINED DURING THE FASTENING PROCESS. IT WILL BE NECESSARY TO OPEN THE FACE OF THE SIGN BOXES TO INSTALL THE POP RIVETS OF THE SHROUD ALONG EACH SIDE OF THE BOXES. THE SHROUD MOUNTING FLANGE EXTENDS 4" ABOVE AND BELOW THE SIGN BOXES.

CAUTION: THE GREEN SHROUDS ARE INSTALLED ADJACENT TO THE SIGN BOXES. NO FASTENERS ARE TO BE PLACED IN THE RADIIUS PORTION OF ANY OF THE SHROUDS

- INSTALL THE TOP CAP WITH (2) 3/16" DIA. X .825" POP RIVETS ON EACH SIDE INTO THE SIGN BOX FLANGE EXTENSION. MAINTAIN A TIGHT JOINT ALONG THE RADIIUS.
- INSTALL THE SIGN BOX COVER MOUNTING ANGLES IN THEIR POSITIONS ABOVE AND BELOW THE SIGN BOXES AS SHOWN ON THIS DRAWING. INSTALL THE SIGN BOX COVER ABOVE THE SIGN BOX EVEN WITH THE TOP CAP AND AT THE BOTTOM OF THE SIGN BOXES, TIGHT TO THE BOTTOM OF THE BOX. USE (3) 3/16" DIA. X .825" POP RIVETS ON EACH SIDE OF THE COVER.
- REMOVE PROTECTIVE MASKS FROM ALL SHROUDS AND COVERS.

**BP AMERICA**  
RETAIL MARKETING  
DESIGN AND ENGINEERING  
200 PUBLIC SQUARE  
CLEVELAND, OHIO 44114

**TRANS 10 TECHNOLOGIES**  
5380 PLEASANT AVENUE  
FAIRFIELD, OHIO 45014  
PHONE (513) 828-4955

JOB LOCATION: \_\_\_\_\_ JOB NO.: \_\_\_\_\_

**5' HORIZONTAL MOUNT SIGN ASSEMBLY**  
SHROUD DETAILS

DWG. NO.: 17-5X10 22R6 2/2 REV.: 0  
SCALE: 3/8"=1'-0" | DRAWN BY: K.G.  
DATE: 8/19/89 | CHECKED BY: L.L.L.  
REVISIONS: \_\_\_\_\_ DATE: \_\_\_\_\_ DWN: \_\_\_\_\_ CKD: \_\_\_\_\_

JHM-16-E

8 AUG 1989  
SMB:BE  
02