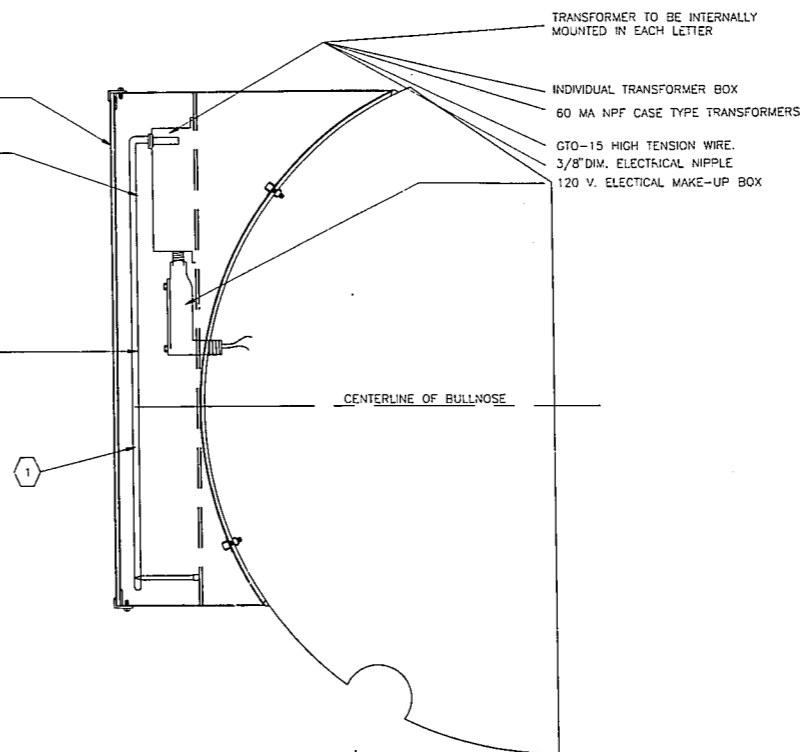


TOTAL AREA = 10-1/2 SQ. FT.

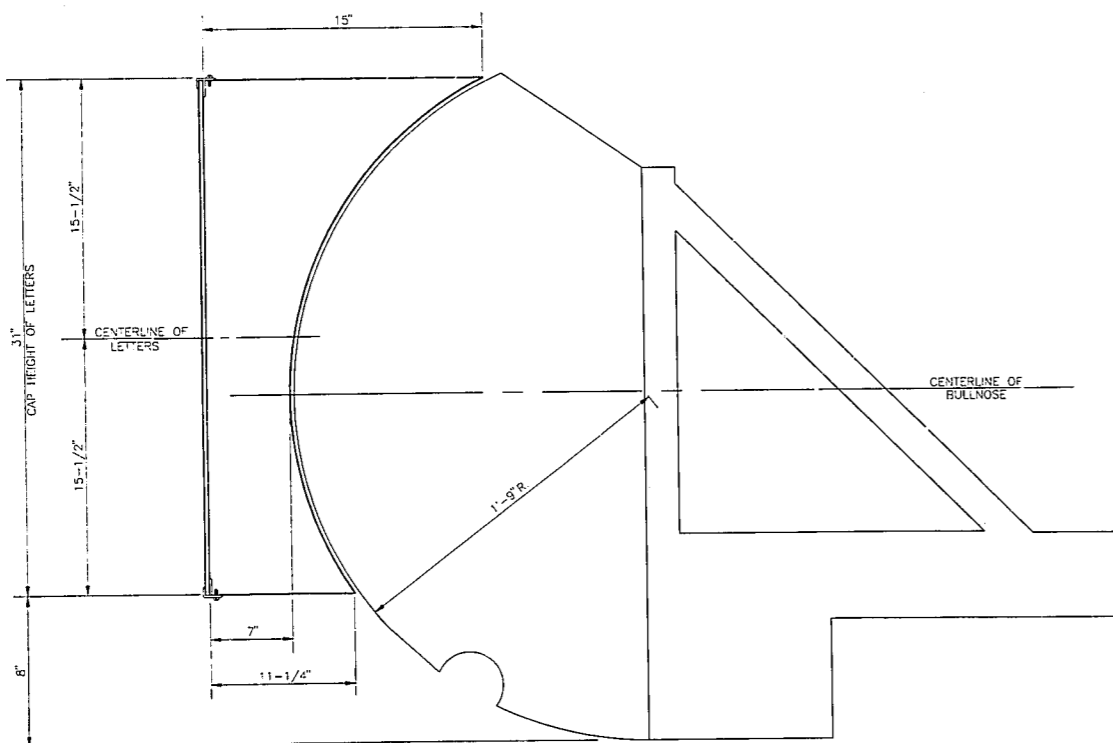
1/8" THICK #7328 ACRYLIC FACES.  
(SEE COLOR SCHEDULE)

15MM #6500 WHITE NEON TUBING (2 ROWS)

GLOSS WHITE ENAMEL INTERIOR



CENTERLINE OF BULLNOSE



LETTER		B	P
TUBE FOOTAGE			
TRANSF.		60 MA-NPF	
AMPS		120 VOLT	
CIRCUITS			

NOTE: ABOVE SCHEDULE TO BE COMPLETED BY MANUFACTURER.

COLOR SCHEDULE		
FACES	ACRYLITE	YELLOW 6509
COVERS	JEWELLITE	348-C GREEN
INTERIOR	ZINC "S" & POLYEJ.	WHITE GLOSS
EXTERIOR	MANUF. SPECIFIED	VALSPAR BP GREEN URETHANE PAINT SYSTEM (V40-G-102)

### MATERIAL SCHEDULE

G.C.=GENERAL CONTRACTOR S=SUPPLIER  
O=OWNER I=INSTALLER

KEY	QTY.	DISCRIPTION	S	I
1		31" HIGH BP WITH FACES, NEON TUBING, PK HOUSING AND TRANSFORMERS	O	GC SEE NOTE 2

\*EXACT LOCATION OF BP SIGNAGE SHOWN ON PLOT PLAN

### NOTES

- SIGN TO BEAR UNDERWRITERS LABEL.
- 120 VOLT SERVICE TO BE SUPPLIED BY G.C. TO EACH OF THE TWO TRANSFORMERS. TRANSFORMERS TO BE FIELD LOCATED BY G.C. FINAL CONNECTION FROM TRANSFORMER TO KIOSK ELECTRICAL PANEL BY G.C.
- THE VOLTAGE AT THIS SIGN MUST BE 120±6% - 2.4 VOLTS, MEASURED AT THE JUNCTION BOX NEAREST THE SIGN OR SIGN LETTERS. ANY DEVIATION FROM THESE LIMITS MAY CAUSE SERIOUS DAMAGE TO THE SIGN TRANSFORMER AND WILL VOID WARRANTY.
- AVERAGE ILLUMINATION READINGS FROM EACH LETTER SHOULD BE NO LESS THAN 320 FOOT-CANDELES ON SURFACE.
- SIGNS TO WITHSTAND WINDLOAD OF 50 PSF.

**BP OIL CO.**  
RETAIL MARKETING  
DESIGN AND ENGINEERING  
200 PUBLIC SQUARE  
CLEVELAND, OHIO 44114

**BP BULLNOSE CANOPY  
SIGNAGE**

DWG. NO.: 17-BP31-C REV.:2

SCALE: NO SCALE MADE BY: G.P.D.

DATE: 1/24/89 CHECKED BY:

REVISIONS DATE DWN CKD

1. 1/24/89 G.P.D. 1/24/89

2. 1/24/89 G.P.D. 1/24/89

3. 1/24/89 G.P.D. 1/24/89

4. 1/24/89 G.P.D. 1/24/89

5. 1/24/89 G.P.D. 1/24/89

17-BP31-C DWA 12/30/89