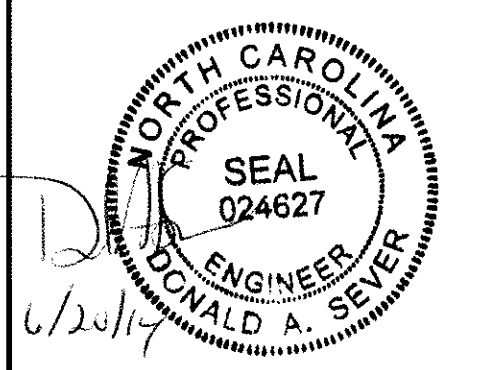


Hugh J. Gillece
and Associates
875 Walnut Street
Suite 360
Cary, NC 27511
BUSINESS LIC. # C-496
Phone: (919)469-1101
Fax: (919)460-7637

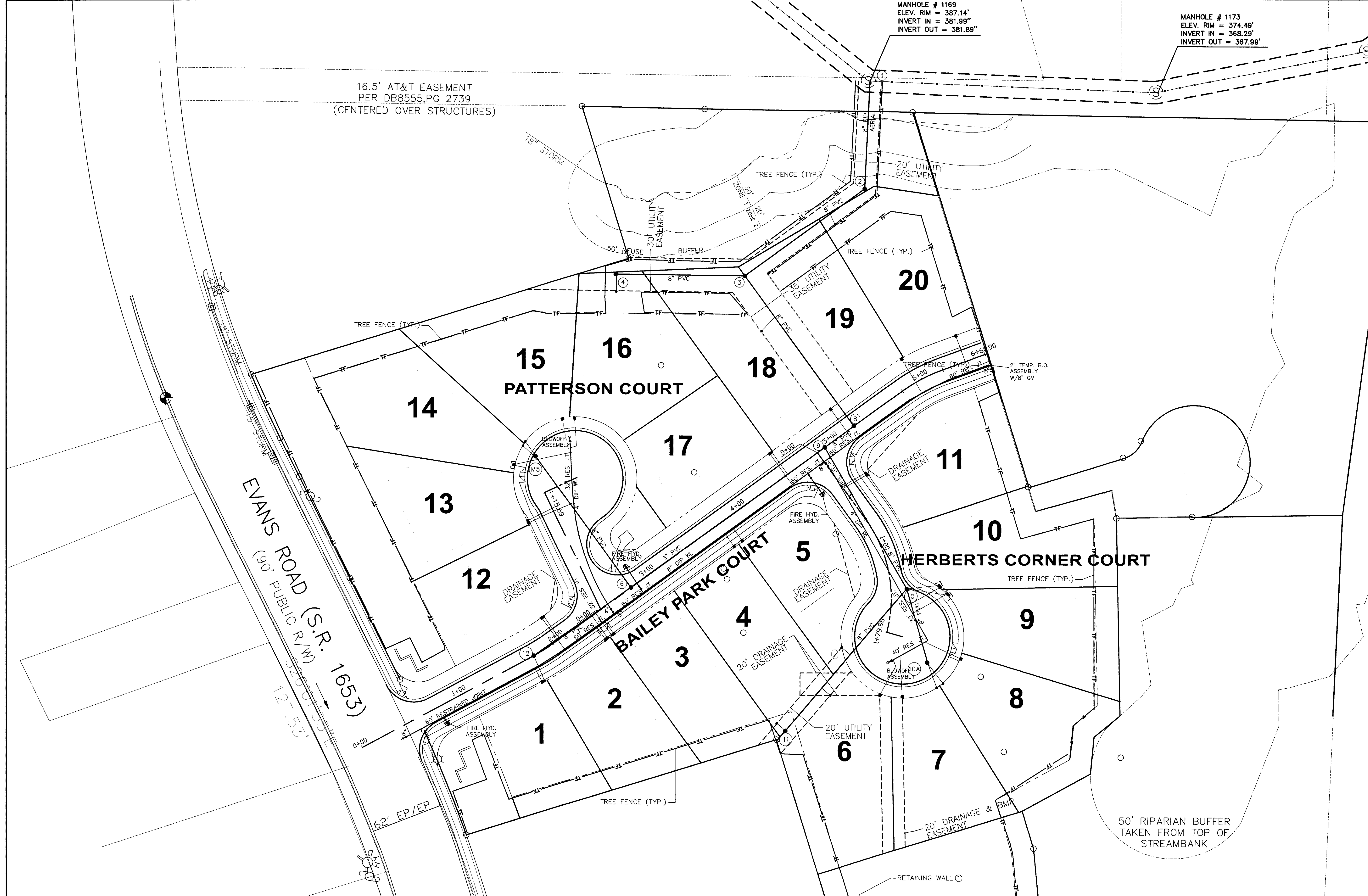
No.	DATE	REVISION
1	3/27/14	TOWN OF CARY REVIEW COMMENTS FEB 24, 2014
2	5/29/14	TOWN OF CARY REVIEW COMMENTS MAY 2, 2014
3	6/26/14	FINAL SET ISSUED



UTILITY PLAN
FOR
BAILEY PARK COURT
SITUATED AT
CARY
WAKE COUNTY, NORTH CAROLINA

JOB #	8900.10
DSN/CHK BY:	DS
DWN BY:	BH
DATE:	1/9/2014
HRZ SCALE:	1"=40'
VRT SCALE:	NONE

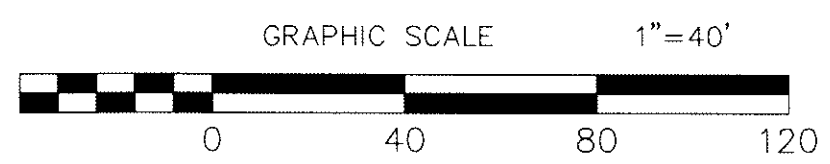
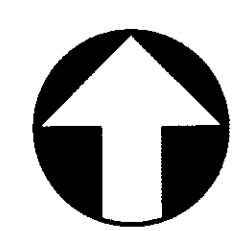
SHEET NO.
C6



1) "This design meets all current Town of Cary Standard Specifications and Details except where specifically noted below."
Exception - none.

2) The Reduction of Lead in Drinking Water Act signed by the President in 2011 takes effect on January 4, 2014. It requires all materials and waterworks supplies in contact with wetted surfaces of potable water pipe, fittings, and fixtures to meet the new standard for lead content. The new maximum of 0.25% lead applies to municipal water systems as well as residential and commercial plumbing. The Town of Cary has enacted new standard specifications and details for the potable water system as well as the reclaimed water system that take effect July 1, 2013. A six month grace period will allow the use of both leaded brass and "no lead" brass. On January 4 however, all projects regardless of phase or status must comply with both the federal law and the Town's revised specifications. Please contact the Town Engineering Department at 919-469-4030 for further information on the new requirements.

SEE SHEET 8 FOR SEWER PROFILES
MH 1 - MH 4, MH 3 - MH 8, MH 10 - MH 11
SHEET 5 FOR ALL OTHERS



HTE#: 14-0917
14-SB-002
APPROVED BY TOWN OF CARY
DEVELOPMENT REVIEW COMMITTEE
PLANNER *K.H.D.* DATE *7/10/2014*