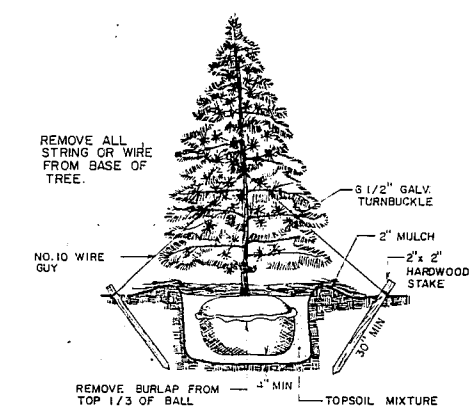
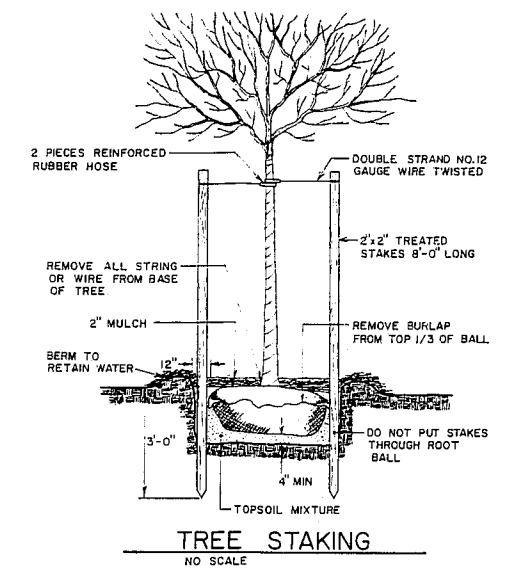
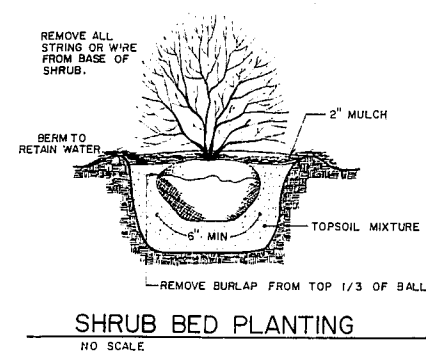
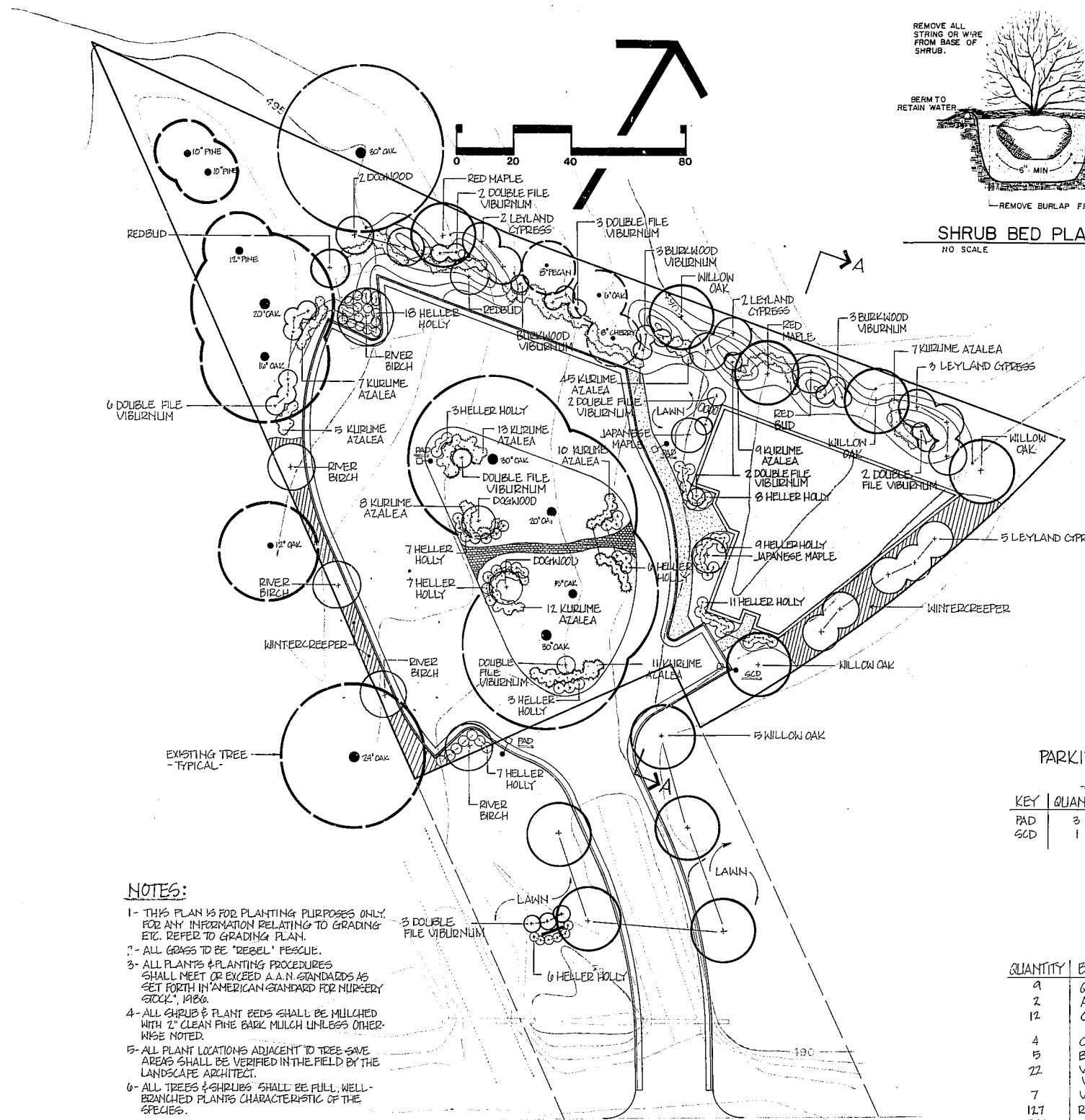




Revisions
JUNE 24, 1987
1st T.O.C. REVIEW COMMENTS
JULY 9, 1987
2nd T.O.C. REVIEW COMMENTS



ISLAND TREATMENT NOTES:
1- PLANT MATERIAL WITHIN THE ISLAND SHALL BE LOCATED SO AS NOT TO CUT ANY TREE BOOTS OVER 1" IN DIAMETER.
2- IF ANY EXISTING SAVE TREE SHOULD DIE, IT WOULD BE REPLACED WITH A 5" CALIPER WILLOW OAK.

**PARKING AREA LIGHTING
EMCO LIGHTING**

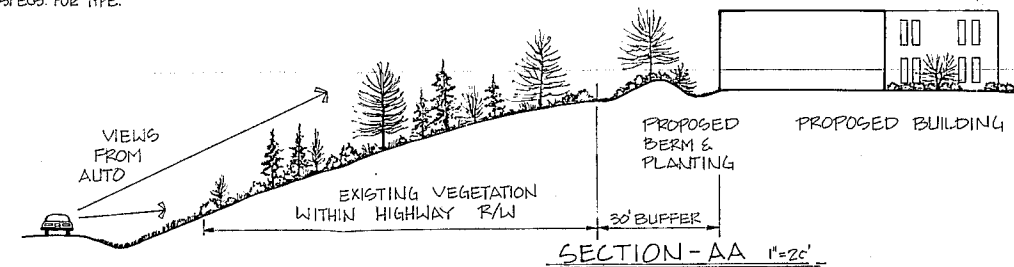
KEY	QUANTITY	TYPE
PAD	3	PAD - 250 HPS - 240 - DB - FC - 66A20
6CD	1	6CD - 250 HPS - 240 - DB - FC - 66A20

NOTES:

- 1- THIS PLAN IS FOR PLANTING PURPOSES ONLY. FOR ANY INFORMATION RELATING TO GRADING ETC. REFER TO GRADING PLAN.
- 2- ALL GRASS TO BE 'REBEL' FESCUE.
- 3- ALL PLANTS & PLANTING PROCEDURES SHALL MEET OR EXCEED A.A.N. STANDARDS AS SET FORTH IN 'AMERICAN STANDARD FOR NURSERY STOCK', 1980.
- 4- ALL SHRUBS & PLANT BEDS SHALL BE MULCHED WITH 2" CLEAN FINE BARK MULCH UNLESS OTHERWISE NOTED.
- 5- ALL PLANT LOCATIONS ADJACENT TO TREE-SAVE AREAS SHALL BE VERIFIED IN THE FIELD BY THE LANDSCAPE ARCHITECT.
- 6- ALL TREES & SHRUBS SHALL BE FULL, WELL-BRANCHED PLANTS CHARACTERISTIC OF THE SPECIES.
- 7- ○ SYMBOL FOR OVERHEAD LIGHTING. SEE SPECS. FOR TYPE.

PLANT LIST

QUANTITY	BOTANICAL NAME	COMMON NAME	CALIPER	HEIGHT	ROOT	REMARKS
1	QUERCUS PHELLOS	WILLOW OAK	3'-3 1/2"	10'-12'	B&B	
2	ACER RUBRUM	RED MAPLE	3'-3 1/2"	10'-12'	B&B	
12	CUPRESSOCYPARIS LEYLANDII	LEYLAND CYPRESS		6'-8'	B&B	
4	CORNUS FLORIDA	DOGWOOD		6'-8'	B&B	
5	BETULA NIGRA	RIVER BIRCH		8'-10'	B&B	3 TRUNK MIN. FULL WELL & BRANCHED
22	VIBURNUM PLICATUM VAR. TOMENTOSUM	DOUBLE FILE VIBURNUM		4'-6'	B&B	
7	VIBURNUM x BURKWOODII	BURKWOOD VIBURNUM		4'-6'	B&B	
117	RHOODENDRON CRETULUM	KURUME AZALEA		15'-18"	CONT.	
1840	EUONYMUS FORTUNEI	WINTERCREEPER			CONT.	
82	ILEX COENATA 'HELLER'	HELLER HOLLY		15'-18"	CONT.	
3	CERAS CANADENSIS	REDBUD		6'-8'	B&B	
2	ACER PALMATUM	JAPANESE MAPLE		8'-10'	B&B	SPECIMEN



Project
**BAKER - BROWN
PROFESSIONAL
BUILDING**

PLANTING PLAN

Date
JUNE 10, 1987

Scale
1" = 20'

Sheet
3