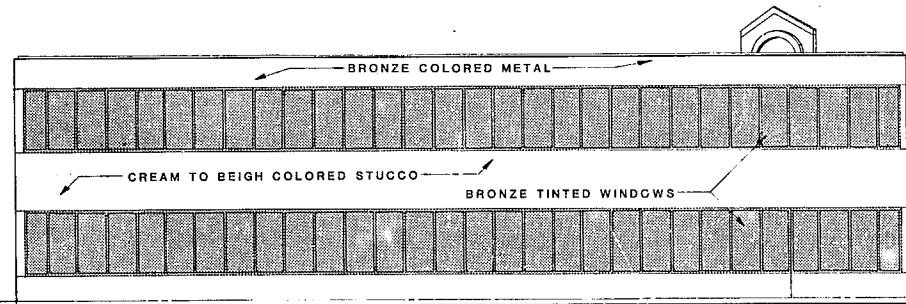
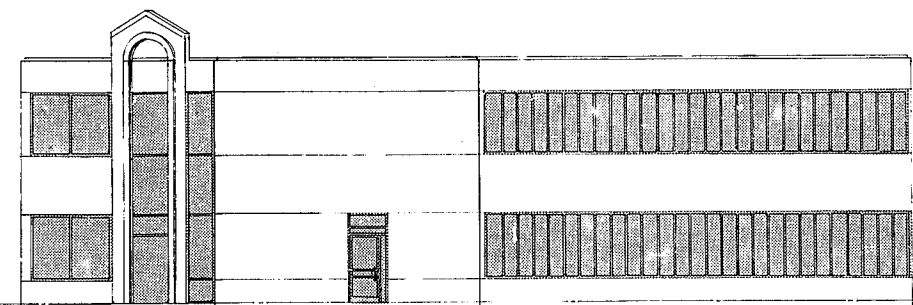


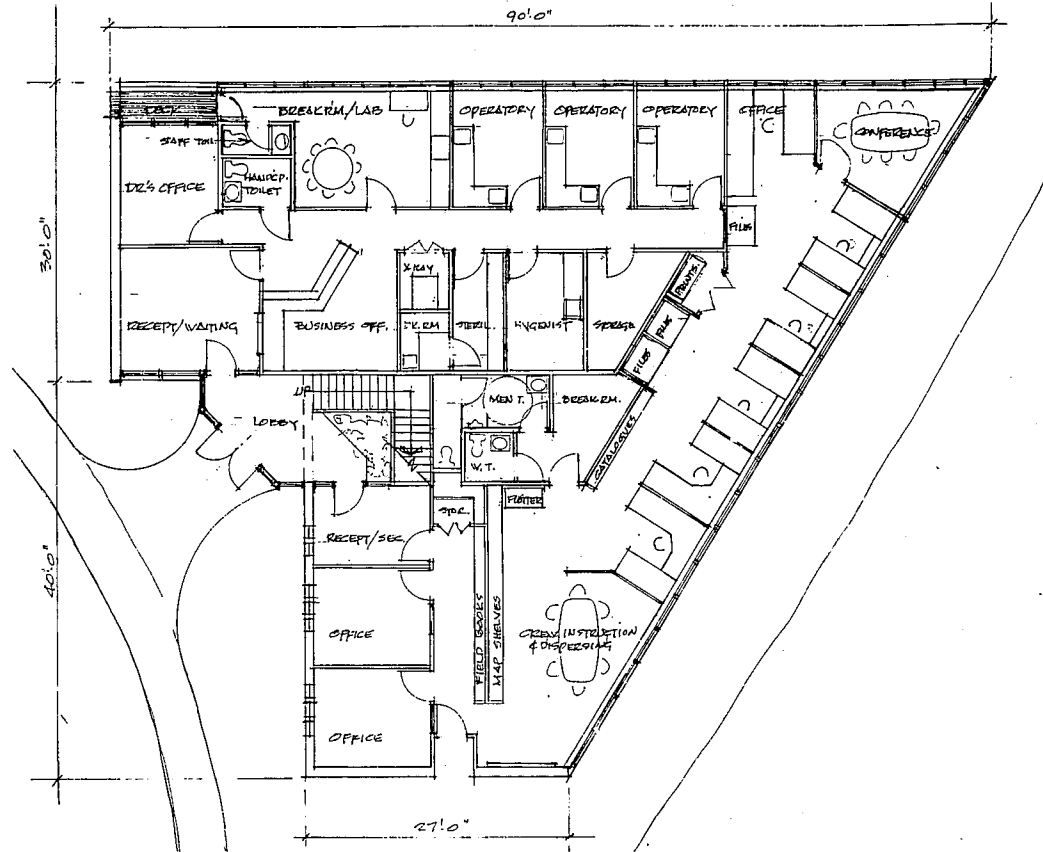
FRONT ELEVATION 1/8"



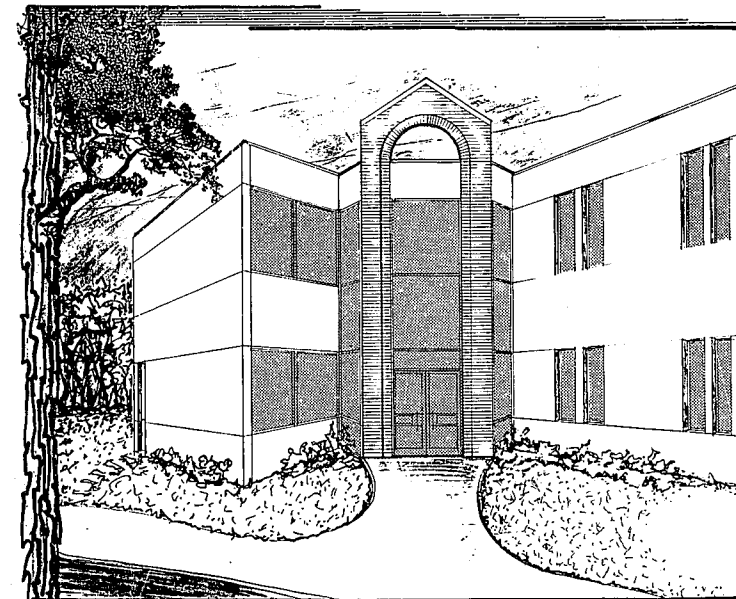
LEFT SIDE ELEVATION 1/8"



RIGHT SIDE ELEVATION 1/8"



1ST. FLOOR PLAN 1/8"



VIEW OF FRONT ENTRANCE N.S.

MEMBER
AIA

THOMPSON & McVICKER
ARCHITECTS - PLANNERS
313 EAST 4TH STREET - P.O. BOX 680 - LAMBERTON, N.C. 28366
(919) 739-0881

REVISIONS

ISSUES

BROWN/BAKER OFFICE BLDG.
CARY, N.C.

JOB NO. 2187
DATE
DRAWN BY VE, BT
SHEET
1