

NOT FOR
CONSTRUCTION

SUBDIVISION
AND SITE PLAN
SUBMITTAL

MASONRY NOTES

- MASONRY CONTRACTOR TO PROVIDE HORIZONTAL AND VERTICAL EXPANSION JOINTS IN BRICKWORK PER TECHNICAL NOTES 18A AS PUBLISHED BY THE BRICK INDUSTRY ASSOCIATION.
- ATTACHMENT TO MASONRY SHALL BE PER TECHNICAL NOTES 44A AS PUBLISHED BY THE BRICK INDUSTRY ASSOCIATION.

GENERAL NOTES

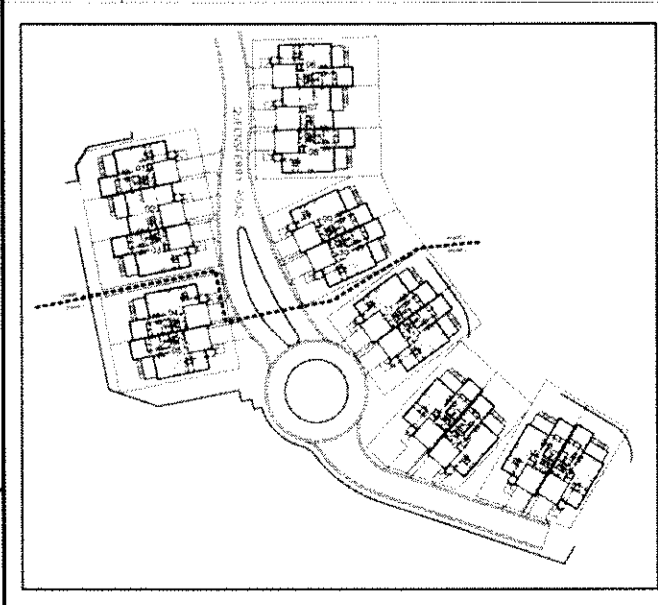
- NO MASONRY CORE HOLES SHALL BE EXPOSED, TYP. CLOSURE (SOLID CORE) MASONRY SHALL BE USED WHERE CORE HOLES WOULD OTHERWISE BE EXPOSED TO ELEMENTS.
- EXPOSED STEEL LINTELS AND BREAK METAL TO BE PAINTED TO MATCH ADJACENT SURFACE UNLESS OTHERWISE NOTED, TYP.
- ALL EXTERIOR GWB CEILINGS TO BE PAINTED UNLESS OTHERWISE NOTED.
- PROVIDE SOLID BLOCKING WITHIN WALL CAVITY SEGMENTS BEHIND ALL EXTERIOR LIGHTS.
- FACE OF SLAB SHALL NOT BE EXPOSED AT SLOPED EXTERIOR PAVING CONDITIONS. COORDINATE EXT. PAVING CONDITIONS WITH CIVIL, TYP.
- EXTERIOR PAVING SHALL NOT HAVE A FINISHED ELEVATION HIGHER THAN THE SILL HEIGHT AT AN ADJACENT DOOR LOCATION.
- ALL CAULKING IS TO MATCH ADJACENT SURFACES.
- ALL DIMENSIONS ARE TAKEN FROM EXTERIOR FACE OF STUD WALLS, EXTERIOR FACE OF CMU/CONCRETE WALLS, COLUMNS, WINDOW CENTERLINES, & MASONRY OPENINGS UNLESS OTHERWISE NOTED.
- PROVIDE 3/4" PLYWOOD WITHIN WALL CAVITY SEGMENTS BEHIND ALL SURFACE MOUNTED ELECTRICAL PANELS PRIOR TO PANEL INSTALLATION.
- VERIFY ALL FINISH FLR. ELEVATIONS (F.F.E.) WITH CIVIL DRAWINGS.
- SEE EXT. ELEVATIONS FOR LOCATION & TAGS OF EXTERIOR FINISHES.
- COORDINATE SIDEWALK LOCATIONS AND HEIGHTS WITH ALL HARDSCAPE PLANS.
- VERIFY ALL BRACE FRAME LOCATIONS & CONFIGURATIONS ARE CLEAR OF ALL DOOR AND WINDOW OPENINGS.
- SEE UNIT PLANS (A4.00 SERIES) FOR UNIT DOOR TAGS & WINDOW TAGS.
- ALL EXTERIOR WALKS & DRIVEWAYS TO SLOPE MIN. 1/8" PER 1'-0" AWAY FROM UNIT DOORS.
- SEE STRUCTURAL DRAWINGS FOR ADDITIONAL INFORMATION.
- FIRE RATED SEPARATIONS TO EXTEND INTO ALL EAVES & DORMERS AT TENANT SEPARATION.
- ALL WOOD IN CONTACT W/ MASONRY TO BE PRESSURE TREATED.
- ALL DECK FRAMING AND MATERIALS NOT PROTECTED FROM WEATHER SHALL BE PRESSURE TREATED.
- TRUSS MANUFACTURER SHALL NOTIFY STRUCTURAL ENGINEER OF ANY CHANGES IN TRUSS LAY-OUT AND ALL LOADS IMPOSED ON BEAMS AND HEADERS.
- AT POINT LOADED CONDITIONS USE BUILT-UP SOLID POST AND PROVIDE SOLID BLOCKING AT FLOOR CAVITY (BETWEEN FLOORS).

14-SB-007
HTE # 14-1089
Approved by the Town of Cary
Development Review Committee

Planner: *K.H.* Date: *8/29/2014*

PROJECT:	013122
DATE:	02.27.2014
REVISIONS:	DATE
Review Comments	04.24.2104
Review Comments	06.26.2104

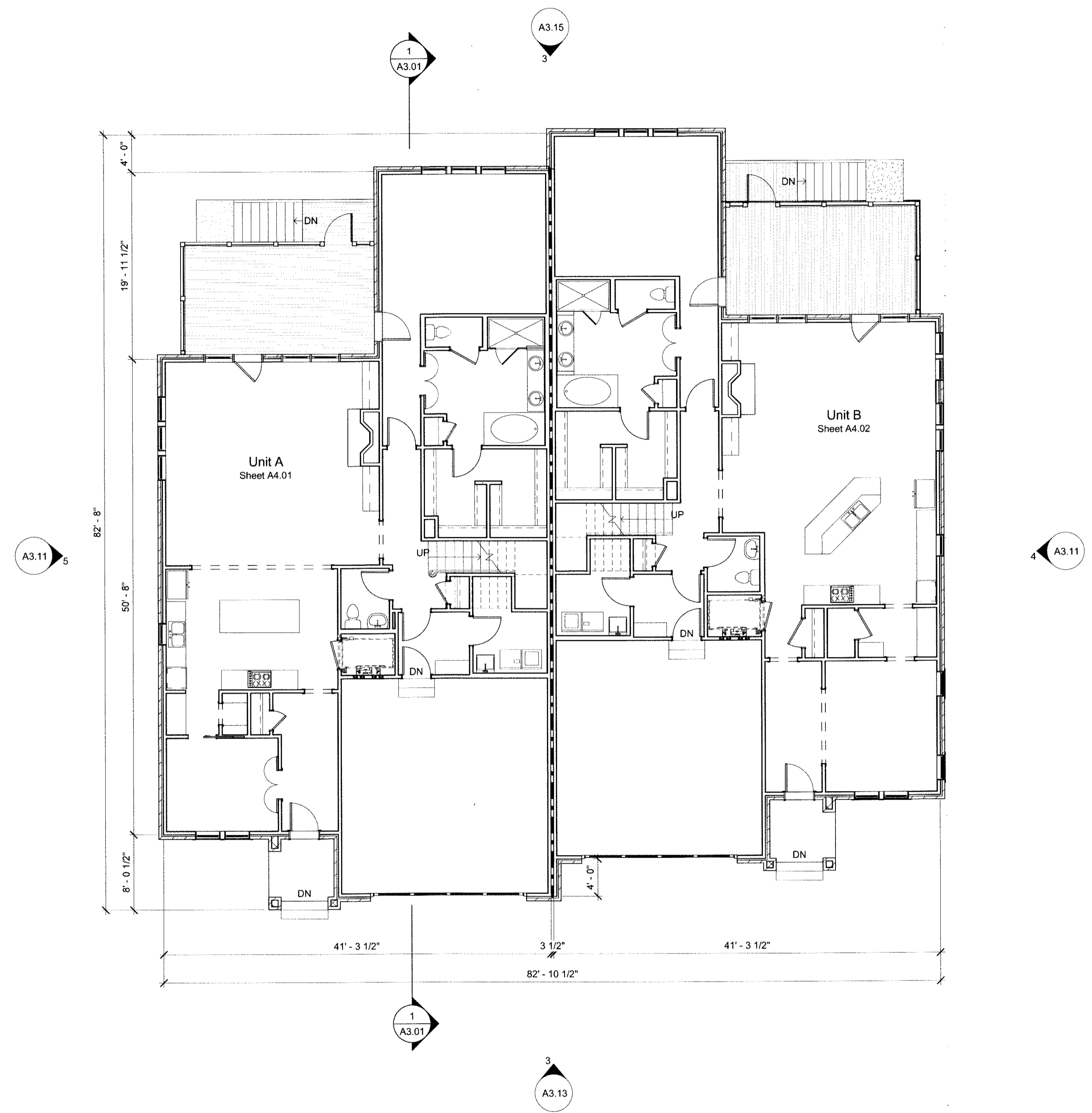
KEY PLAN



DRAWN BY: Author
CHECKED BY: Checker

DUPLEX BUILDING
PLANS

A1.01



© 2014 CLINE DESIGN ASSOCIATES, PA. EXPRESSLY RESERVES ALL RIGHTS IN THESE PLANS. THESE PLANS ARE NOT TO BE REPRODUCED, CHANGED, OR COPIED IN ANY FORM OR MANNER WHATSOEVER, NOR ARE THEY TO BE ASSIGNED TO ANY THIRD PARTY WITHOUT FIRST OBTAINING THE EXPRESS WRITTEN PERMISSION AND CONSENT OF CLINE DESIGN ASSOCIATES, PA.