

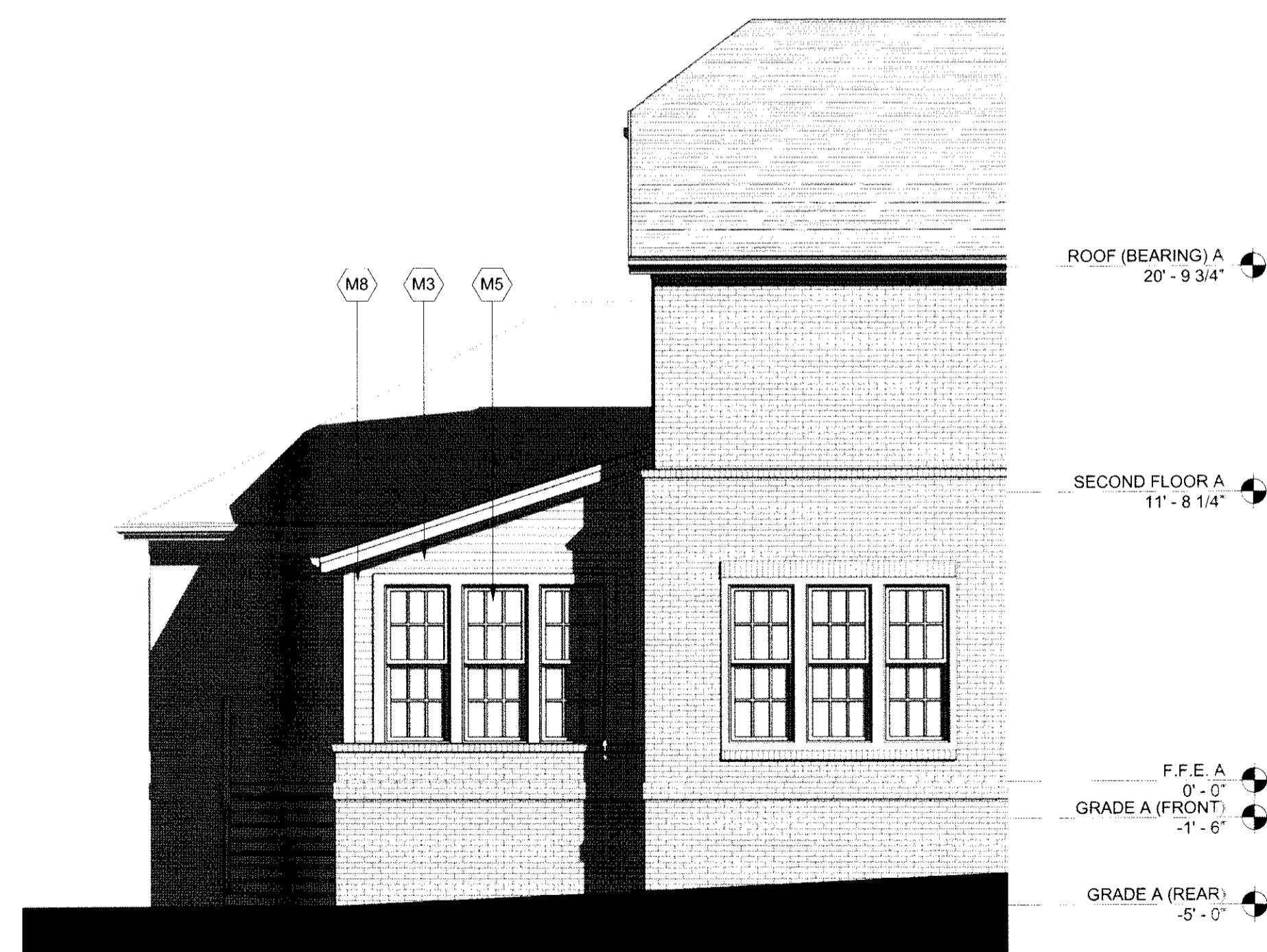
## MATERIAL LEGEND

- M1 BRICK VENEER  
MANUFACTURER: PINE HALL  
COLOR: CHESAPEAKE PEARL
- M2 FIBER CEMENT 'STUCCO' PANEL  
MANUFACTURER: JAMES HARDIE  
COLOR: SAIL CLOTH
- M3 FIBER CEMENT LAP SIDING  
MANUFACTURER: JAMES HARDIE  
COLOR: SAIL CLOTH
- M4 ASPHALT ROOF SHINGLES  
MANUFACTURER: LANDMARK  
COLOR: DRIFTWOOD
- M5 DOUBLE HUNG VINYL WINDOW  
MANUFACTURER: PLY GEM  
MODEL: MW PRO SERIES 400  
TRIM COLOR: MUSKET BROWN
- M6 OPERABLE CASEMENT VINYL WINDOW  
MANUFACTURER: PLY GEM  
MODEL: MW PRO SERIES 400  
TRIM COLOR: MUSKET BROWN
- M7 FIXED VINYL WINDOW  
MANUFACTURER: PLY GEM  
MODEL: MW PRO SERIES 400  
TRIM COLOR: MUSKET BROWN
- M8 FIBER CEMENT TRIM  
COLOR: MUSKET BROWN
- M9 FIBER CEMENT FASCIA  
COLOR: MUSKET BROWN
- M10 CORNICE  
COLOR: MUSKET BROWN
- M11 GUTTER  
MATERIAL: METAL  
COLOR: MUSKET BROWN
- M12 FRONT ENTRY DOOR  
MANUFACTURER: DSA  
COLOR: DARK OAK
- M13 GARAGE DOOR  
MANUFACTURER: AMARR  
COLOR: WALNUT
- M14 DECORATIVE PVC BRACKET  
COLOR: MUSKET BROWN
- M15 OUTDOOR PORCH SCREEN
- M16 SCREENED-IN PORCH COLUMNS & RAIL  
COLOR: MUSKET BROWN
- M17 FIBER CEMENT PANEL  
MANUFACTURER: JAMES HARDIE  
COLOR: MUSKET BROWN

## GEN. NOTES

1. ADDRESSING SIGNAGE TO BE LOCATED ON THE SIDE OF THE BUILDING FROM WHERE THE BUILDING IS ADDRESSED (ONE SIDE ONLY). PROVIDE BUILDING ADDRESS IN 6" HIGH LETTERS TO BE APPROVED BY FIRE MARSHALL.
2. SEE WALL SECTIONS & ENLARGED ELEVATIONS FOR GUARDRAIL HEIGHTS. ALL BALCONIES OR WALKWAYS ELEVATED MORE THAN 30" IN VERTICAL RISE TO HAVE MINIMUM 3'-6" HIGH GUARDRAILS AS PER THE BUILDING CODE.
3. REFER TO SPECIFICATIONS FOR ALL EXTERIOR MATERIALS. THE WALL SECTIONS AND DETAILS SHOWN IN THIS SET REFLECT FIBER CEMENT PANEL / SIDING WITH 5/4 TRIM. ALL MATERIAL WIDTHS TO REMAIN SAME SIZE IF ANY PRODUCT SUBSTITUTION IS MADE. CONTACT ARCHITECT IF THERE ARE ANY DISCREPANCIES IN DETAILS DUE TO PRODUCT SUBSTITUTIONS.
4. REFER TO BUILDING PLAN FOR BRICK, INCLUDING THOSE NOT SHOWN IN THESE ELEVATIONS.
5. SEE ROOF PLAN FOR OVERHANG DIAGRAM DESIGNS.

PERCENTAGE OF MASONRY = 95%



DUPLEX BUILDING - LEFT SIDE ELEVATION - SUNROOM OPTION

3/16" = 1'-0" 2

PERCENTAGE OF MASONRY = 65%



DUPLEX BUILDING - REAR ELEVATION - SUNROOM OPTION

3/16" = 1'-0" 1

Planner: *K.H.* Date: 8/24/2014

14-SB-007  
HTE #: 14-1089  
Approved by the Town of Cary  
Development Review Committee