

**NOTE**

ALL SHADED AREAS REPRESENT AREAS TO BE MULCHED WITH PINE NEEDLES 3" DEEP.

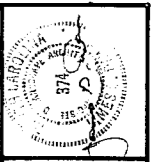
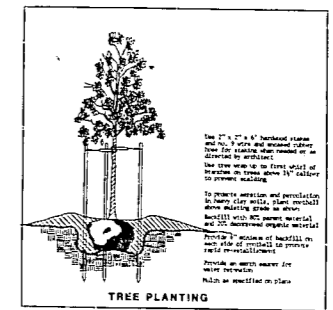
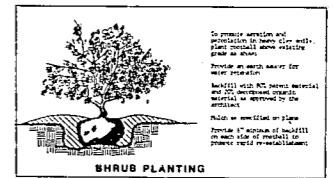
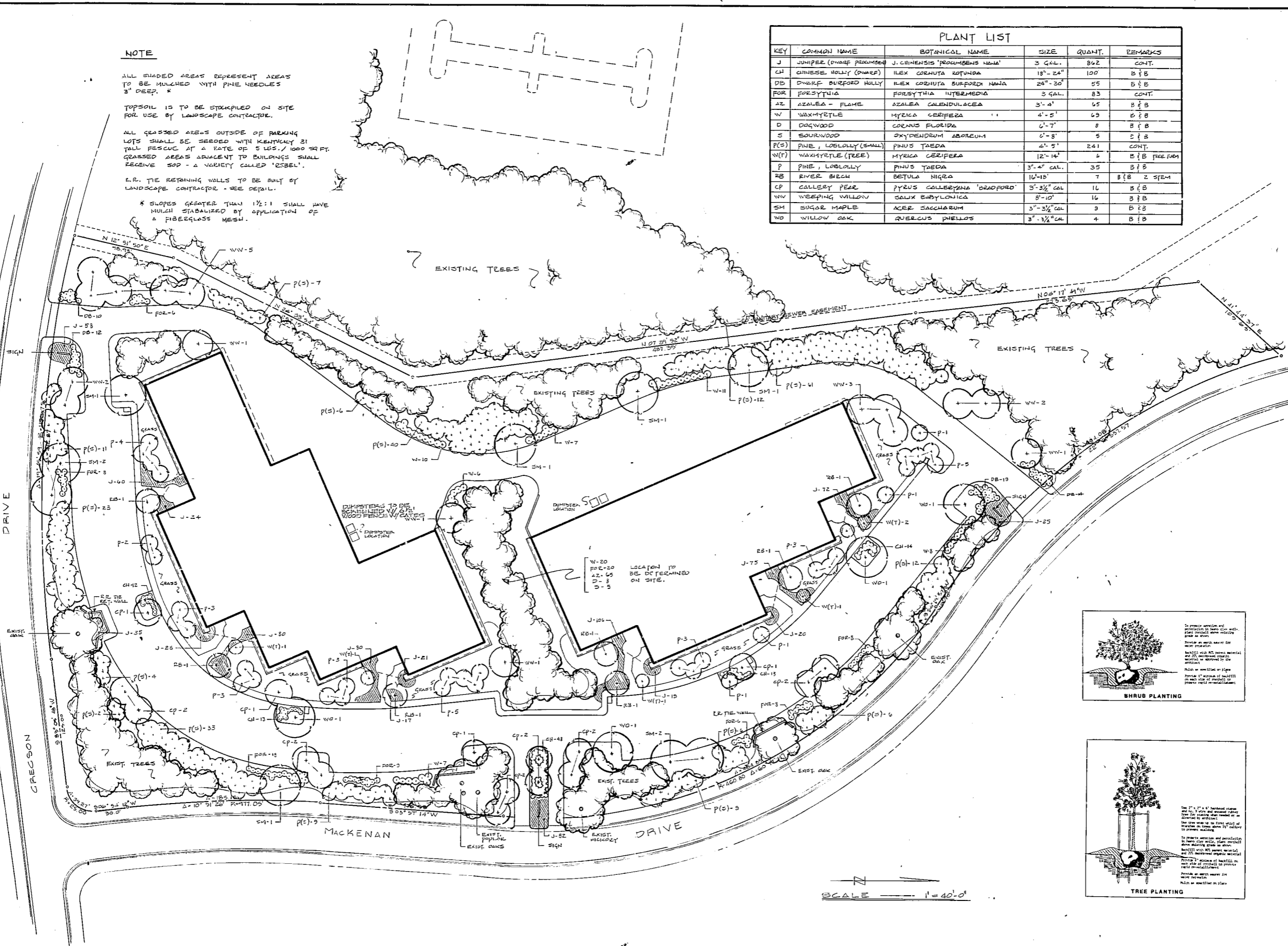
TOPSOIL IS TO BE STRIPPIED ON SITE FOR USE BY LANDSCAPE CONTRACTOR.

ALL GRASSED AREAS OUTSIDE OF PARKING LOTS SHALL BE SEEDED WITH KENTUCKY 31 TALL FESCUE AT A RATE OF 5 LBS./1000 SQ. FT. GRASSED AREAS ADJACENT TO BUILDINGS SHALL RECEIVE SOD - A VARIETY CALLED 'REBEL'.

I.R. THE RETAINING WALLS TO BE BUILT BY LANDSCAPE CONTRACTOR - SEE DETAIL.

\* SLOPES GREATER THAN 1 1/2:1 SHALL HAVE MULCH STABILIZED BY APPLICATION OF A FIBERGLASS MESH.

PLANT LIST					
KEY	COMMON NAME	BOTANICAL NAME	SIZE	QUANT.	REMARKS
J	JUNIPER (DWARF PINKUMBER)	J. CHINENSIS 'PROCEMBENS NANA'	3 GAL.	862	CONT.
CH	CHINESE HOLLY (DWARF)	ILEX CORNUTA ROTUNDA	18" - 24"	100	B & B
DB	DWARF BURFORD HOLLY	ILEX CORNUTA BURFORD NANA	24" - 30"	55	B & B
FOR	FORSYTHIA	FORSYTHIA INTERMEDIA	3 GAL.	83	CONT.
AZ	AZALEA - FLAME	AZALEA CALEDULACEA	3' - 4'	65	B & B
W	WAXMYRTLE	MYRTICA CERIFERA	4' - 5'	69	B & B
D	DOGWOOD	CORNUS FLORIDA	2' - 7'	8	B & B
S	SOURWOOD	OXYDENDRUM ABOREUM	2' - 8'	5	B & B
P(S)	PINE, LOBLOLLY (SMALL)	PINUS TAEDA	4' - 5'	241	CONT.
W(T)	WAXMYRTLE (TREE)	MYRTICA CERIFERA	12' - 14'	6	B & B TREE FORM
P	PINE, LOBLOLLY	PINUS TAEDA	3' - 4" CAL.	35	B & B
RB	RIVER BIRCH	BETULA NIGRA	10' - 18'	7	B & B 2 STEM
CP	GALLERY PEAR	PYRUS COLLEBYANA 'DRAFFORD'	3' - 3 1/2" CAL.	16	B & B
WV	WEeping WILLOW	SALIX BABYLONICA	8' - 10'	16	B & B
SM	SUGAR MAPLE	ACER SACCHARUM	3' - 3 1/2" CAL.	5	B & B
WO	WILLOW OAK	QUERCUS PHELLOS	3' - 3 1/2" CAL.	4	B & B



**community land design**  
 1142 Executive Circle  
 Cary, North Carolina 27511  
 (919)469-0872

SEPT. 14 '84  
 SD

REVISED 9/27/84

**THE BARNHILL COMPANY**  
**DISTRIBUTION FACILITIES**  
 27 A-B MACGREGOR PARK, CARY, N.C.  
**LANDSCAPE PLAN**

SD-3