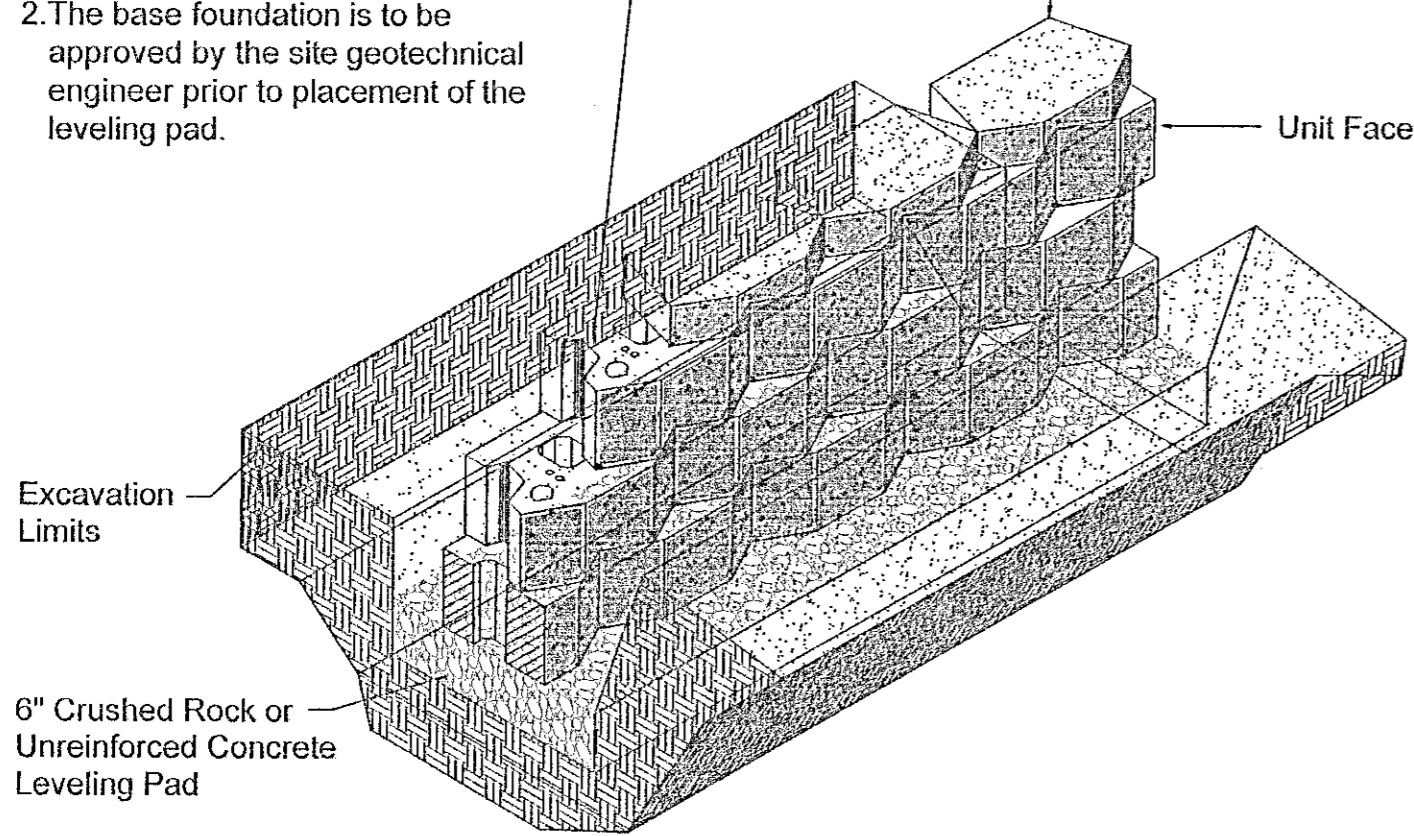


Base Leveling Pad Notes:

- The leveling pad is to be constructed of crushed stone or 2,000 psi ± unreinforced concrete
- The base foundation is to be approved by the site geotechnical engineer prior to placement of the leveling pad.

Compac Unit		Cap Unit	
Width:	18"	Width:	18"
*Depth:	12"	*Depth:	10 1/2"
Height:	8"	Height:	4"
*Weight:	85 lbs	*Weight:	45 lbs



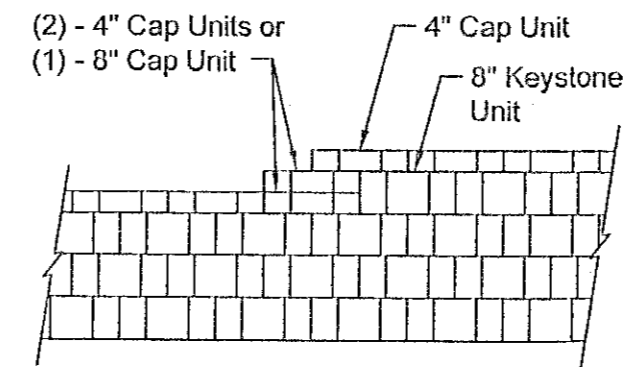
Compac Unit/Base Pad Isometric Section View

* Dimensions & Weight May Vary by Region

**04-SP-159
APPROVED**

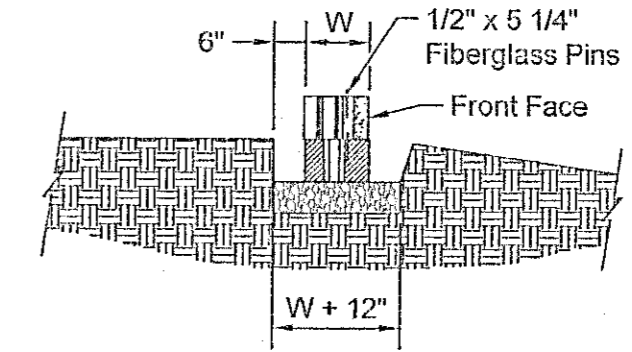
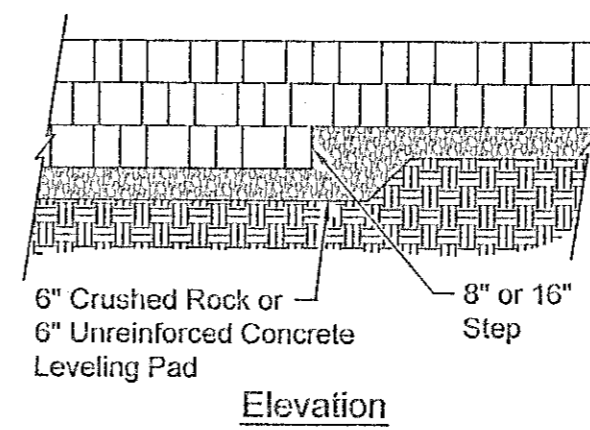
Town of Cary

Approved by _____ Date _____
 Planning _____ Date _____
 Engineering _____ Date _____



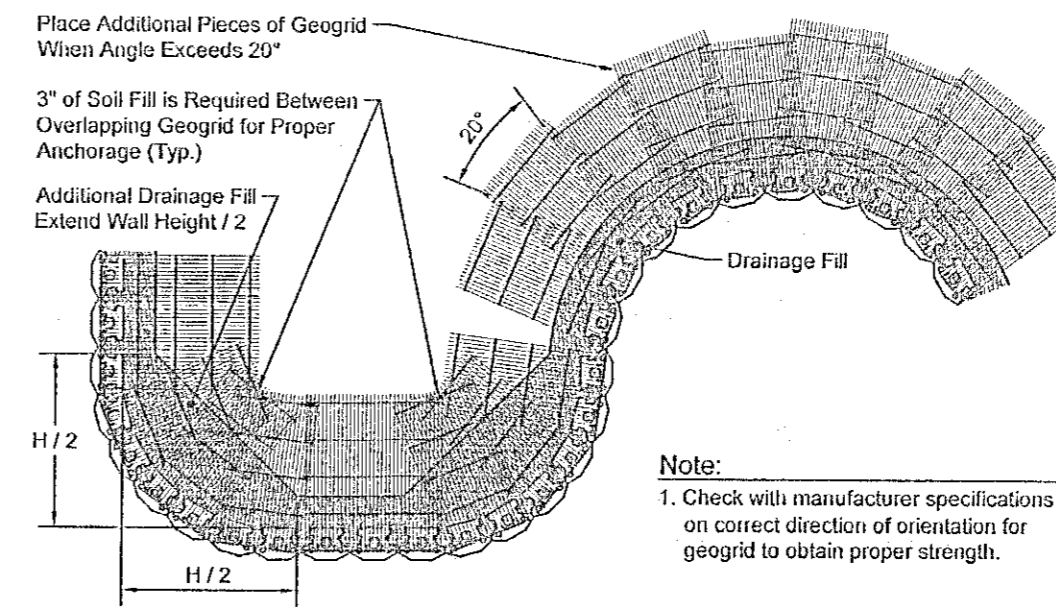
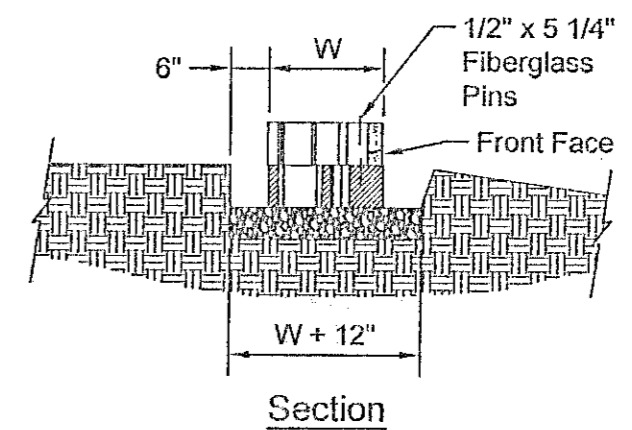
- Note:**
- Secure all cap units with Keystone Kapseal or equal.

Top of Wall Steps



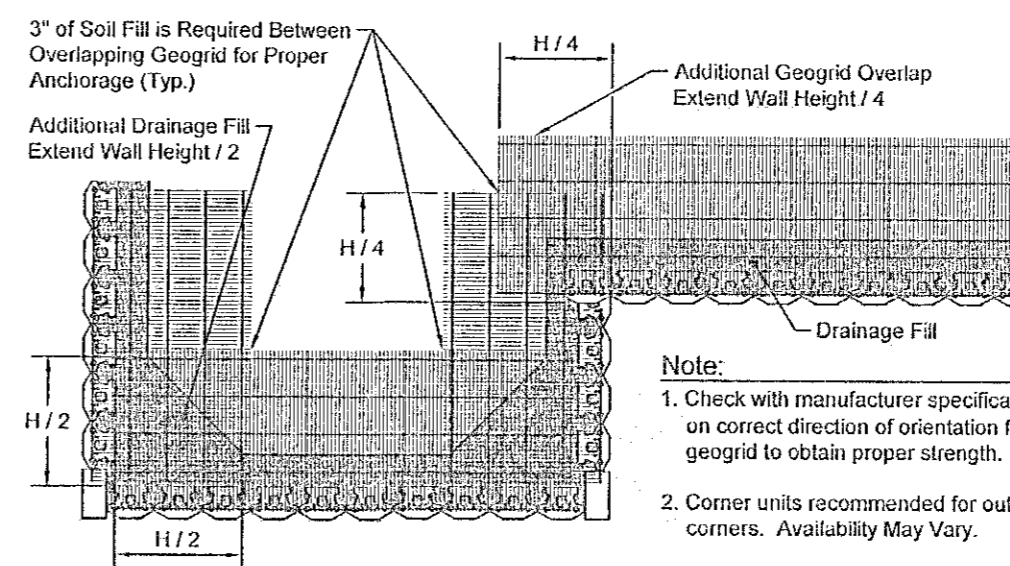
- Note:**
- The leveling pad is to be constructed of crushed stone or 2000 psi ± unreinforced concrete.

Leveling Pad Detail



- Note:**
- Check with manufacturer specifications on correct direction of orientation for geogrid to obtain proper strength.

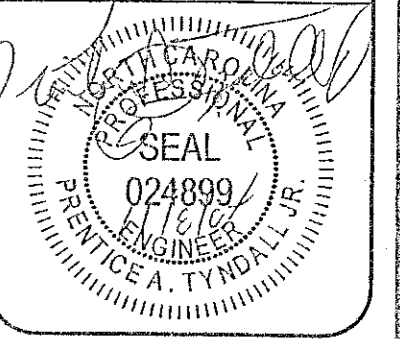
Geogrid Installation on Curves



- Note:**
- Check with manufacturer specifications on correct direction of orientation for geogrid to obtain proper strength.
 - Corner units recommended for outside corners. Availability May Vary.

Geogrid Installation at Corners

Engineers seal does not include construction means, methods, techniques, sequences, procedures or safety precautions.
 Any deviations or discrepancies on plans are to be brought to the immediate attention of Tyndall Engineering & Design. Failure to do so will void Tyndall Engineering & Design liability.
 Please review these documents carefully. Tyndall Engineering & Design will interpret that all dimensions, recommendations, etc. prescribed in these documents were deemed acceptable once construction begins.



Project #: 04DW-123 R1
 Date: 11/08/04
 Division/Section By: DW
 Issue Checked By: PAT
 Scale: NTS

Battery @ Highhouse
 Highhouse Road
 Cary, NC
 Wake County

Tyndall Engineering & Design, P.A.
 100 Professional Court, Suite 105
 Garner, North Carolina 27529
 Office: (919) 773-1200
 Fax: (919) 773-9668
 E-mail: tyndall@bellsouth.net

Format Landscaping
 5121 Neal Road
 Suite 103
 Durham, NC 27705
 Office: (919) 384-0131
 Fax: (919) 384-8423

REVISIONS		
No.	Date	Remarks
1	11/08/04	Added Landscape Sheet
2		
3		

Sheet Name: **Details**
 Sheet #: **S-8** of 8