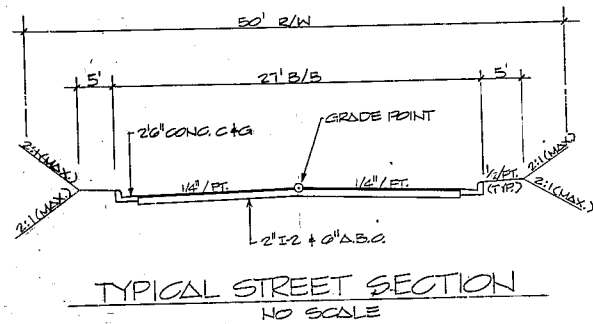


TOTAL DENLDED AREA = 2.35 AC.

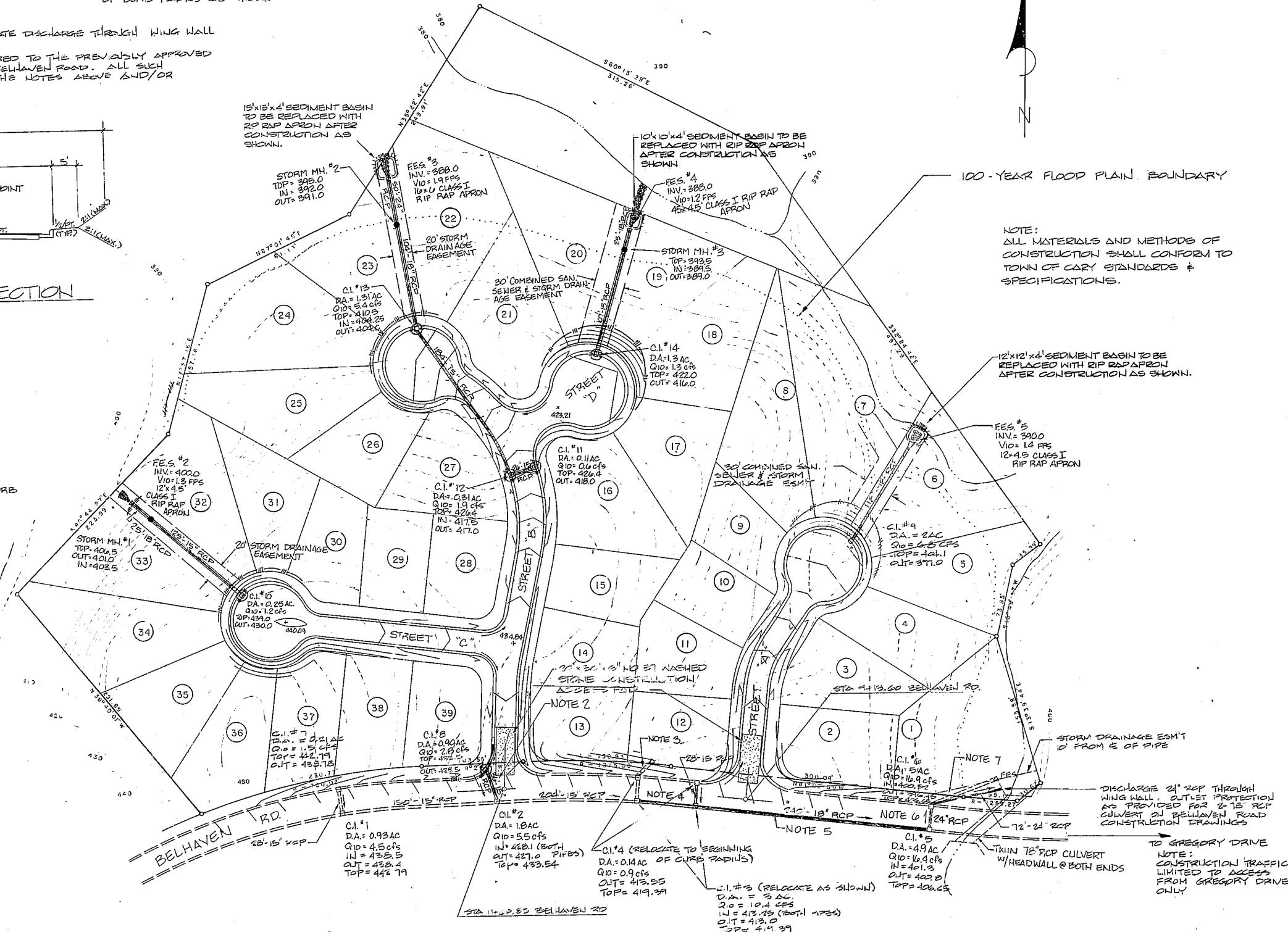
NOTES:

1. STORM SEWER SHOWN IN BELHAVEN RD. WITH BROKEN LINES TAKEN FROM CONSTRUCTION DRAWINGS PREPARED BY RAGSDALE CONSULTANTS, P.A. & APPROVED BY CITY OF CARY. CHANGES TO STORM SEWER IN BELHAVEN INDICATED WITH SOLID LINES & DESCRIBED BELOW.
2. ADD FLOW FROM C.I.#3 TO BELHAVEN STORM DRAINAGE
3. ELIMINATE APPROVED DISCHARGE PIPE
4. REVERSE CROSS PIPE TO FLOW FROM C.I.#4 TO C.I.#3 & RELOCATE C.I.#3 TO BEGINNING OF CURB RADII AS SHOWN
5. ADD APPROX. 300 L.F. 18" RCP
6. INCREASE TO 24" RCP
7. INCREASE TO 24" RCP & RELOCATE DISCHARGE THROUGH WING WALL

CERTAIN REVISIONS ARE REQUIRED TO THE PREVIOUSLY APPROVED CONSTRUCTION DRAWINGS FOR BELHAVEN ROAD. ALL SUCH REVISIONS ARE INDICATED IN THE NOTES ABOVE AND/OR IN THE PLAN BELOW



ALL STREETS 21' B-B
ALL CUL-DE-SACS - 40' R TO BACK OF CURB



100-YEAR FLOOD PLAIN BOUNDARY

NOTE:
ALL MATERIALS AND METHODS OF CONSTRUCTION SHALL CONFORM TO TOWN OF CARY STANDARDS & SPECIFICATIONS.

12'x12'x4' SEDIMENT BASIN TO BE REPLACED WITH RIP RAP APRON AFTER CONSTRUCTION AS SHOWN.

DISCHARGE 24" RCP THROUGH WING WALL. OUTLET PROTECTION AS PROVIDED FOR 24" RCP CULVERT ON BELHAVEN ROAD CONSTRUCTION DRAWINGS

TO GREGORY DRIVE
NOTE:
CONSTRUCTION TRAFFIC LIMITED TO ACCESS FROM GREGORY DRIVE ONLY

SCALE: 1" = 50'

SURVEYING · ENGINEERING · LAND PLANNING

JOHNSTON - MOODY, INC.
LIGON BUILDING - SUITE 102
(919) 834-9954

RALEIGH, N.C.
27606

800 ST. MARY'S STREET

NO.	REVISIONS	DATE	BY

NORTHWOODS PUD.

PROPERTY OWNER: PULTE HOME CORPORATION
CAROLINA DIVISION
CARY, NORTH CAROLINA

GRADING, STORM DRAINAGE, & EROSION CONTROL

2
7