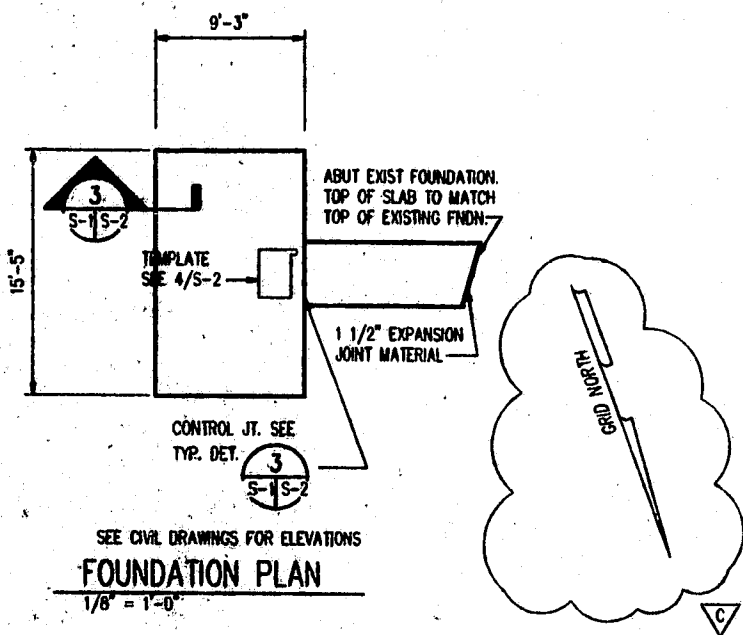


GENERAL NOTES - CONCRETE

- UNLESS OTHERWISE NOTED, ALL CONCRETE SHALL DEVELOP A MINIMUM COMPRESSIVE STRENGTH OF 4000 PSI (2500 PSI BEFORE TOWER ERECTION) IN 28 DAYS FOR FOUNDATIONS AND 3500 PSI IN 28 DAYS FOR FLOOR SLABS AND CONDUIT ENCASEMENTS.
- UNLESS OTHERWISE NOTED, ALL REINFORCING STEEL SHALL BE NEW BILLET STEEL, CONFORMING TO ASTM A-615, GRADE 60, DEFORMED.
- UNLESS OTHERWISE NOTED, ALL DETAILING, FABRICATION AND PLACING OF REINFORCING STEEL SHALL CONFORM TO THE MANUAL OF STANDARD PRACTICE FOR DETAILING REINFORCED CONCRETE STRUCTURES. (ACI 315)
- UNLESS OTHERWISE NOTED, REINFORCE ALL CONCRETE SLABS ON GRADE WITH 6 X 6-W2.9 X W2.9 WELDED WIRE FABRIC CONFORMING TO ASTM SPECIFICATION A-165.
- WIRE FABRIC REINFORCING SHALL LAP TWO FULL MESHES AND BE SECURELY WROD AT EACH SIDE AND END.
- ALL BAR SPLICES SHALL BE CLASS "B" TENSION SPLICES, UNLESS OTHERWISE SHOWN.
- CHAMFER ALL EXPOSED EXTERNAL CORNERS OF CONCRETE WITH 3/4" X 45 DEGREES CHAMFER, UNLESS OTHERWISE NOTED.
- ALL EXCAVATIONS ARE TO BE INSPECTED BY SOILS ENGINEER PRIOR TO PLACEMENT OF STEEL CAGE OR POURING CONCRETE TO ENSURE NO LARGE AMOUNTS OF LOOSE DIRT OR FOREIGN MATERIAL REMAINS.
- PROVIDE TWO (2) #4 DIAGONAL BARS IN TOP FACE OF SLAB ON GRADE AT ALL RE-ENTRANT CORNERS. EXTEND THESE BARS 18" PAST THE CORNERS.
- CONTRACTOR SHALL REFER TO DRAWINGS OF OTHER TRADES AND VENDOR DRAWINGS FOR EMBEDDED ITEMS AND RECESSES NOT SHOWN ON THE STRUCTURAL DRAWINGS.
- CONTRACTOR SHALL VERIFY ALL SIZES AND LOCATIONS OF ALL ELECTRICAL OPENINGS AND EQUIPMENT PADS WITH THE ELECTRICAL EQUIPMENT DETAILS AND SHOP DRAWINGS. IT SHALL BE THE RESPONSIBILITY OF THE CONTRACTOR TO PROVIDE ALL OPENINGS AND SLEEVES FOR PROPER DISTRIBUTION FOR ALL UTILITIES.
- ITEMS REFERENCED AS BEING ON "HOLD" SHALL BE INCLUDED IN THE BID AND WORK, BUT FABRICATION OR CONSTRUCTION IS NOT TO PROCEED UNTIL THE "HOLD" REFERENCE IS REMOVED.



NO.	DATE	REVISION DESCRIPTION	BY
1	12-12-88	REVISED	
2	01-14-89	REVISED	
3	01-14-89	REVISED	
4	01-14-89	REVISED	

BELLSOUTH
Carolina PCS, L.P.

09-368-097-A

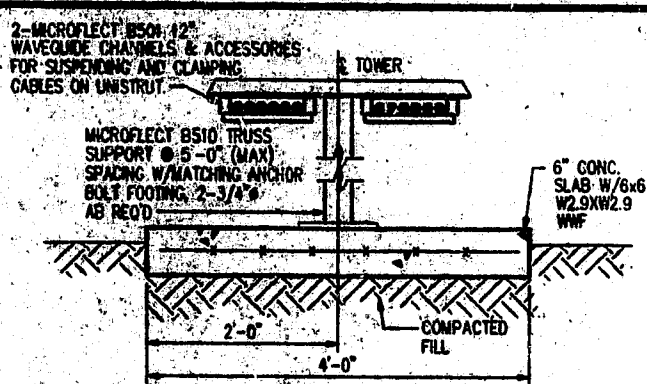
FOUNDATION PLAN,
SECTIONS, AND NOTES

copyright © 1988

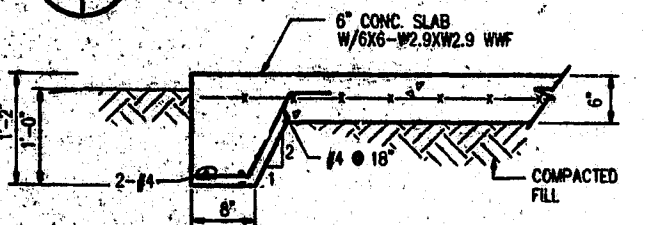
William Oberlander
Professional Engineer
No. 16500
3-12-90
JOHN LIMLEY BAKER

SEAL NOT VALID UNLESS SIGNED AND DATED

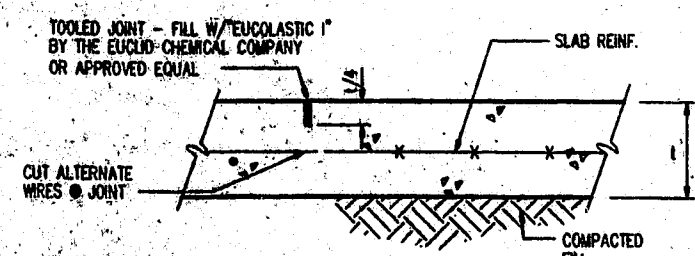
PROJECT MANAGER J. LABRAN	DEPARTMENT MANAGER J. BAKER
LEAD DESIGN PROF. E. HOLS	CHECKED S. BAKER
DESIGNER E. DUNN	DATE OCT 15, 1988
PROJECT NUMBER 22597-02	DRAWING NUMBER S-1



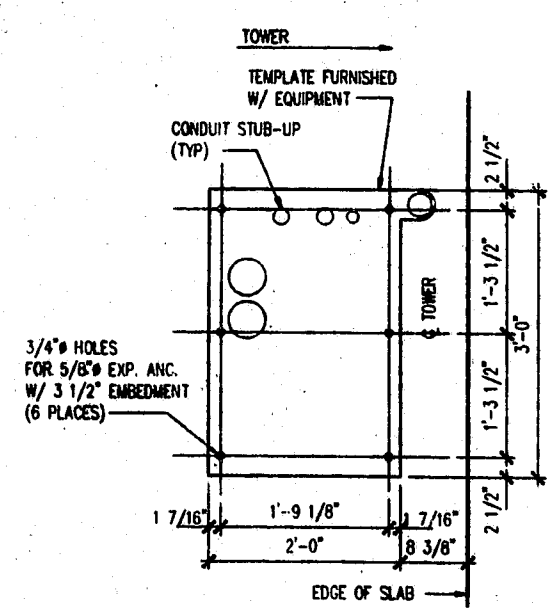
NOTE: EQUIVALENT EQUIP. WILL BE CONSIDERED ALL MATERIALS SHALL BE HOT-DIPPED GALV.
SECTION 1 CABLE SUPPORT
SCALE: 3/4"=1'-0"



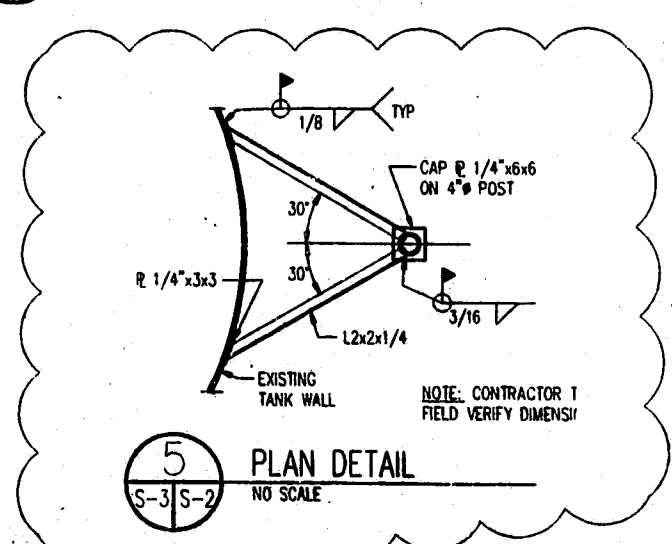
NOTE: COORDINATE PAD INSTALLATION WITH GROUNDING INSTALLATION.
TYP. SLAB EDGE DETAIL 2 EQUIP. CABINET
SCALE: 3/4"=1'-0"



SEE PLAN FOR SLAB INFO. NOT SHOWN.
TYP. CONTROL JOINT
NO SCALE



SPE-A3 BASE TEMPLATE DETAIL
NO SCALE



PLAN DETAIL
NO SCALE

NO.	DATE	REVISION DESCRIPTION	BY
1	12-12-88	REVISED	
2	01-14-89	REVISED	
3	01-14-89	REVISED	
4	01-14-89	REVISED	

BELLSOUTH
Carolina PCS, L.P.

09-368-097-A

SECTIONS, AND
DETAILS

copyright © 1988

William Oberlander
Professional Engineer
No. 16500
3-12-90
JOHN LIMLEY BAKER

SEAL NOT VALID UNLESS SIGNED AND DATED

PROJECT MANAGER J. LABRAN	DEPARTMENT MANAGER J. BAKER
LEAD DESIGN PROF. E. HOLS	CHECKED S. BAKER
DESIGNER E. DUNN	DATE OCT 15, 1988
PROJECT NUMBER 22597-02	DRAWING NUMBER S-2