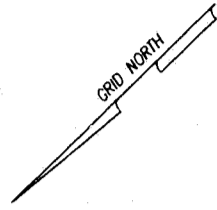
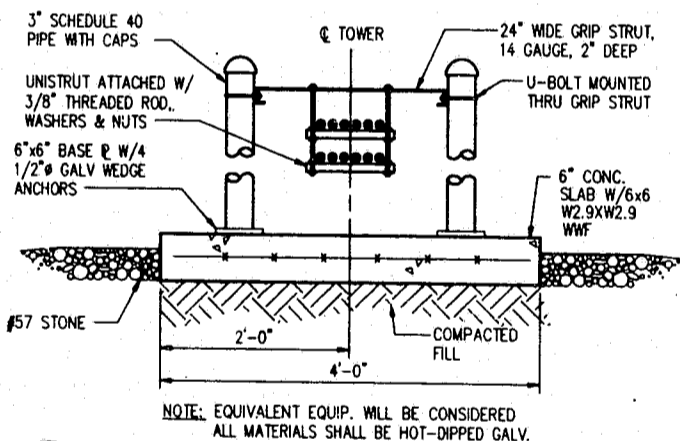


GENERAL NOTES - CONCRETE

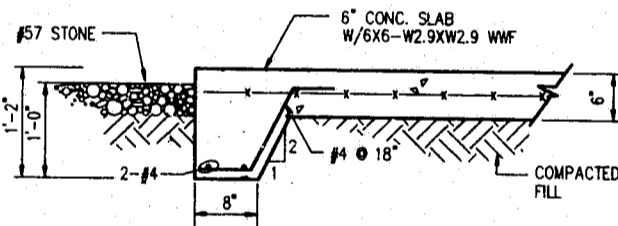
- UNLESS OTHERWISE NOTED, ALL CONCRETE SHALL DEVELOP A MINIMUM COMPRESSIVE STRENGTH OF 3000 PSI (2500 PSI BEFORE TOWER ERECTION) IN 3 DAYS FOR FOUNDATIONS AND 3500 PSI IN 28 DAYS FOR FLOOR SLABS AND CONDUIT ENCASEMENTS.
- UNLESS OTHERWISE NOTED, ALL REINFORCING STEEL SHALL BE NEW BILLET STEEL, CONFORMING TO ASTM A-615, GRADE 60, DEFORMED.
- UNLESS OTHERWISE NOTED, ALL DETAILING, FABRICATION AND PLACING OF REINFORCING STEEL SHALL CONFORM TO THE MANUAL OF STANDARD PRACTICE FOR DETAILING REINFORCED CONCRETE STRUCTURES. (ACI 315)
- UNLESS OTHERWISE NOTED, REINFORCE ALL CONCRETE SLABS ON GRADE WITH 6 X 6-W2.9 X W2.9 WELDED WIRE FABRIC CONFORMING TO ASTM SPECIFICATION A-185.
- WIRE FABRIC REINFORCING SHALL LAP TWO FULL MESHES AND BE SECURELY WIRED AT EACH SIDE AND END.
- ALL BAR SPLICES SHALL BE CLASS "B" TENSION SPLICES, UNLESS OTHERWISE SHOWN.
- CHAMFER ALL EXPOSED EXTERNAL CORNERS OF CONCRETE WITH 3/4" X 45 DEGREES CHAMFER, UNLESS OTHERWISE NOTED.
- ALL EXCAVATIONS ARE TO BE INSPECTED BY SOILS ENGINEER PRIOR TO PLACEMENT OF STEEL CAGE OR POURING CONCRETE TO ENSURE NO LARGE AMOUNTS OF LOOSE DIRT OR FOREIGN MATERIAL REMAINS.
- PROVIDE TWO (2) #4 DIAGONAL BARS IN TOP FACE OF SLAB ON GRADE AT ALL RE-ENTRANT CORNERS. EXTEND THESE BARS 18" PAST THE CORNERS.
- CONTRACTOR SHALL REFER TO DRAWINGS OF OTHER TRADES AND VENDOR DRAWINGS FOR EMBEDDED ITEMS AND RECESSES NOT SHOWN ON THE STRUCTURAL DRAWINGS.
- CONTRACTOR SHALL VERIFY ALL SIZES AND LOCATIONS OF ALL ELECTRICAL OPENINGS AND EQUIPMENT PADS WITH THE ELECTRICAL EQUIPMENT DETAILS AND SHOP DRAWINGS. IT SHALL BE THE RESPONSIBILITY OF THE CONTRACTOR TO PROVIDE ALL OPENINGS AND SLEEVES FOR PROPER DISTRIBUTION FOR ALL UTILITIES.
- CONTRACTOR TO USE CASING FOR DRILLED PIER WHEN REQUIRED. CASING TO BE REMOVED AS CONCRETE IS POURED. CONTRACTOR SHALL PROVIDE A SAFE MEANS OF INSPECTION IF REQUIRED BY THE GEOTECHNICAL ENGINEER.



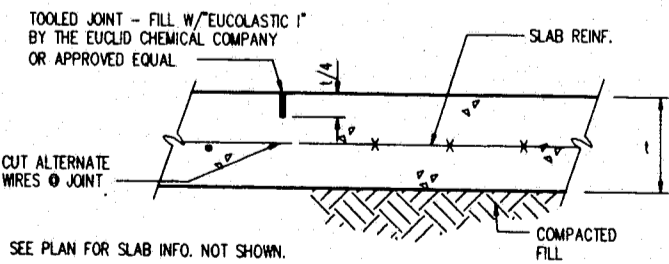
<p>BELLSOUTH Carolinas PCS, L.P.</p> <p>09-388-107-A</p> <p>FOUNDATION PLAN AND NOTES</p> <p>copyright © 19 98</p> <p>Richard Ober-Hensley</p> <p>2301 Research Drive Post Office Box 31388, Raleigh, NC 27622-1388 Tel: 919/782-5511 Fax: 919/782-5823</p> <p>NORTH CAROLINA PROFESSIONAL SEAL 16500 6-20-94 ENGINEER JOHN LINLEY BAKER</p>	
PROJECT MANAGER A. LATMAN	DEPARTMENT MANAGER J. BAKER
LEAD DESIGN PROJ. B. ROSS	CHECKED J. BAKER
DRAWN E. QUERR	DATE JUNE 10, 1998
PROJECT NUMBER 22597-02	DRAWING NUMBER S-1



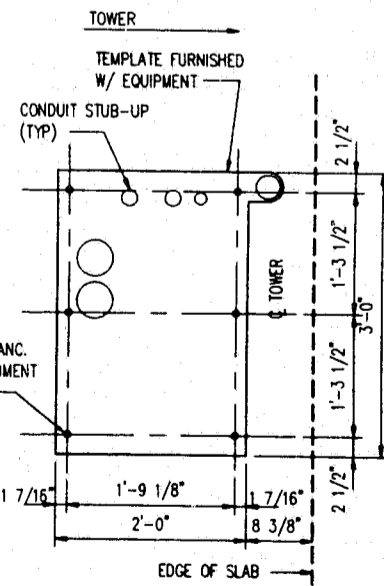
1 SECTION @ CABLE SUPPORT
3/4" = 1'-0"



NOTE: COORDINATE PAD INSTALLATION WITH GROUNDING INSTALLATION
2 TYP SLAB EDGE DETAIL @ EQUIP CABINET
3/4" = 1'-0"



3 TYP. CONTROL JOINT
NO SCALE



4 A3 BASE TEMPLATE DETAIL
NO SCALE

<p>BELLSOUTH Carolinas PCS, L.P.</p> <p>09-388-107-A</p> <p>SECTIONS, AND DETAILS</p> <p>copyright © 19 98</p> <p>Richard Ober-Hensley</p> <p>2301 Research Drive Post Office Box 31388, Raleigh, NC 27622-1388 Tel: 919/782-5511 Fax: 919/782-5823</p> <p>NORTH CAROLINA PROFESSIONAL SEAL 16500 6-20-94 ENGINEER JOHN LINLEY BAKER</p>	
PROJECT MANAGER A. LATMAN	DEPARTMENT MANAGER J. BAKER
LEAD DESIGN PROJ. B. ROSS	CHECKED J. BAKER
DRAWN E. QUERR	DATE JUNE 10, 1998
PROJECT NUMBER 22597-02	DRAWING NUMBER S-2

CONSTRUCTION DOCUMENTS
RALEIGH OFFICE