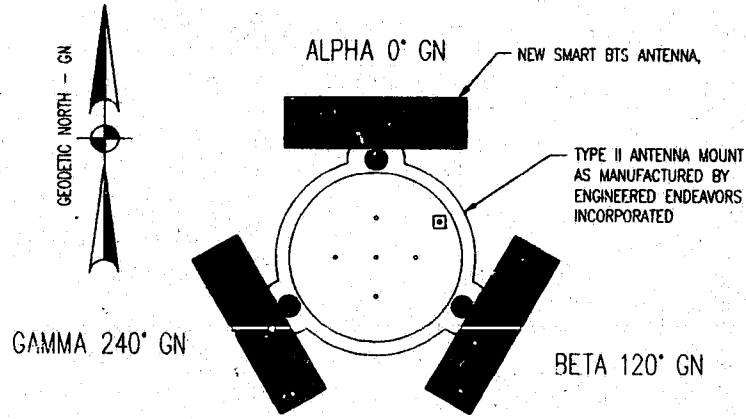
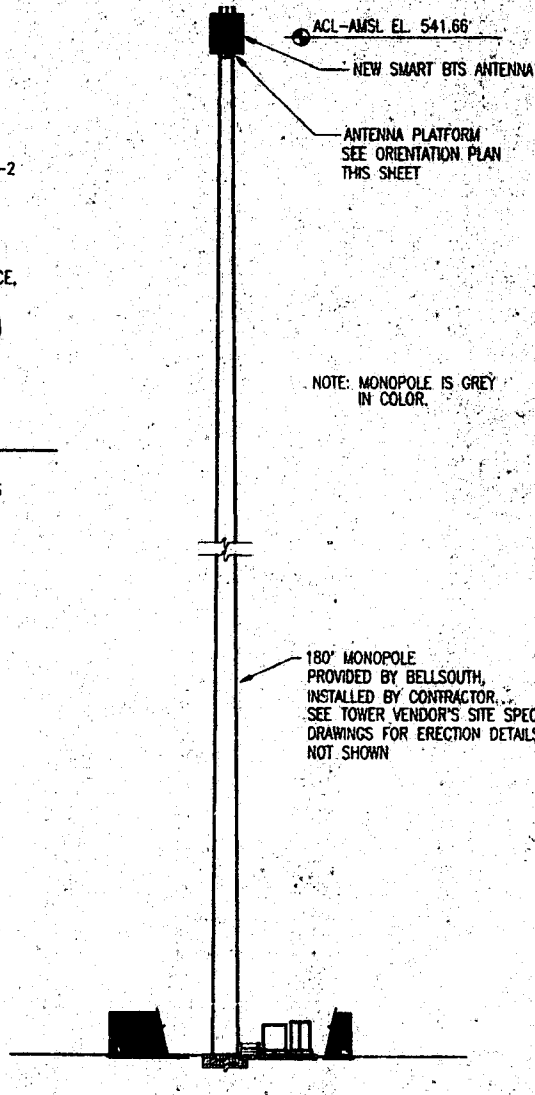


EQUIPMENT LAYOUT ENLARGEMENT



TOWER ORIENTATION

- NOTES:**
1. WAVEGUIDE AND ANTENNA MOUNTS PROVIDED BY TOWER MANUFACTURER AND INSTALLED BY CONTRACTOR.
 2. ANTENNAS PROVIDED AND INSTALLED BY NORTEL.
 3. SPE PROVIDED BY BELLSOUTH, INSTALLED BY CONTRACTOR.
 4. BTS PROVIDED AND INSTALLED BY NORTEL.
 5. TOWER NOT TO BE ERECTED PRIOR TO PERMITTED POWER BEING PROVIDED.



TOWER ELEVATION

NO.	DATE	REVISION DESCRIPTION	BY	CR
C	9/28/96	ADDED NOTES	JS	JS
B	8/13/96	REVISED FOR PERMITTING	JS	JS
A	7/23/96	ISSUED FOR PERMITTING, BCS AND OWNERS REVIEW	JS	JS

BELLSOUTH
Carolina PCS, L.P.

09-368-135-A

TOWER
ELEVATIONS

copyright © 1998

Professional Seal
Professional Engineer

2301 Remondale Drive
Post Office Box 21288, Raleigh, NC 27621-1288
Tel: 919/752-5211 Fax: 919/752-5202



SEAL NOT VALID UNLESS SIGNED AND DATED

PROJECT MANAGER J. CARDEAU	DEPARTMENT MANAGER J. LATHAM
LEAD DESIGN PROJ. R. FERGUSON	DESIGNER S. BEDWELL/D. BROWN
DRAWN H. SIMPSON	DATE AUG. 04, 1998
PROJECT NUMBER 22597-02	DRAWING NUMBER C-4

ANTENNA AND COAXIAL CABLE SCHEDULE							
SECTOR	AZIMUTH	ANTENNA	ANTENNA @ HEIGHT	INTERNAL TILT	DOWN TILT	COAXIAL CABLE	COAXIAL LENGTH
ALPHA	0°	SMART BTS	180.0'	2.5°	0°	LeBARGE CORPORATION EIGHT 1/2" CABLES (NTED 5706)	200'
BETA	120°	SMART BTS	180.0'	2.5°	0°	LeBARGE CORPORATION EIGHT 1/2" CABLES (NTED 5706)	200'
GAMA	240°	SMART BTS	180.0'	2.5°	0°	LeBARGE CORPORATION EIGHT 1/2" CABLES (NTED 5706)	200'

NOTES:

1. INFORMATION ON THIS SHEET IS INCLUDED FOR INFORMATION ONLY. BIDS FOR THIS SITE SHALL NOT INCLUDE ANY WORK RELATED TO ACTUAL INSTALLATION OF LINES & ANTENNAS. INSTALLATION OF LINES & ANTENNAS IS SCHEDULED TO BE PERFORMED BY OTHERS UNDER SEPARATE CONTRACT WITH BELLSOUTH.
2. ANTENNA CENTERLINE HEIGHT IS IN REFERENCE TO TOP OF FOOTING ELEVATION.
3. ALL COAXIAL CABLE FEED LOCATIONS WILL BE FROM THE BOTTOM OF ANTENNAS.
4. ALL ANTENNAS TO BE FURNISHED WITH APPROPRIATE DOWNTILT BRACKETS, CONTRACTOR TO COORDINATE REQUIRED MECHANICAL DOWNTILT FOR EACH ANTENNA WITH BELLSOUTH RF ENGINEER.
5. ANTENNA DATA PER BELLSOUTH RF REPORT DATED 7/11/96.
6. EACH SMART ANTENNA REQUIRES ONE 1.11" O.D. POWER CABLE AS MANUFACTURED BY LEBARGE CORPORATION. POWER CABLE LENGTH WILL BE THE SAME AS COAXIAL CABLE LENGTH (INDICATED IN TABLE ABOVE).

NO.	DATE	REVISION DESCRIPTION	BY	CR
A	7/25/96	ISSUED FOR PERMITTING, BCS AND OWNERS REVIEW	JS	JS

BELLSOUTH
Carolina PCS, L.P.

09-368-135-A

ANTENNA AND
CABLE SCHEDULE

copyright © 1998

Professional Seal
Professional Engineer

2301 Remondale Drive
Post Office Box 21288, Raleigh, NC 27621-1288
Tel: 919/752-5211 Fax: 919/752-5202



SEAL NOT VALID UNLESS SIGNED AND DATED

916-57-135
APPROVED
RPS 11-26-96
JHT 11-26-96

PROJECT MANAGER J. CARDEAU	DEPARTMENT MANAGER J. LATHAM
LEAD DESIGN PROJ. R. FERGUSON	DESIGNER S. BEDWELL/D. BROWN
DRAWN H. SIMPSON	DATE AUG. 04, 1998
PROJECT NUMBER 22597-02	DRAWING NUMBER C-4.1