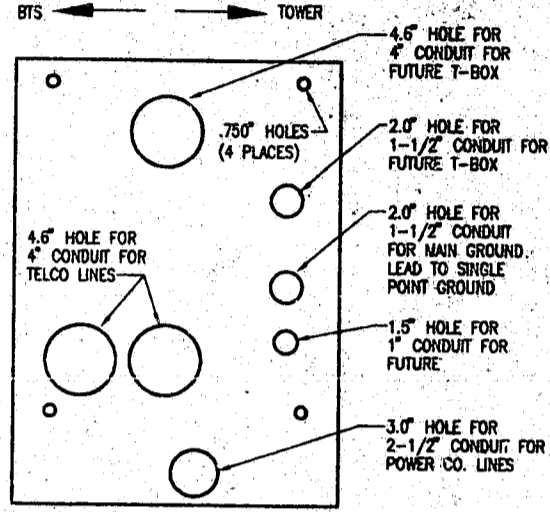


**ENLARGED SITE PLAN**  
SCALE: 1/8" = 1'-0"

- NOTES:**
1. POWER COMPANY SHALL TERMINATE THE POWER CABLES (SUPPLIED AND INSTALLED BY POWER CO.) AT THE UTILITY METER LOCATED IN THE SERVICES DISTRIBUTION CABINET-A2.
  2. FUTURE BTS CABINET AND LP&D TO BE SUPPLIED AND INSTALLED BY THE OWNER.
  3. CONDUIT LINES SHALL HAVE A CONTINUOUS SLOPE DOWNWARD AND AWAY FROM THE SDC-A2 TO THE PROPERTY LINE SO THAT WATER WILL FLOW AWAY FROM THE SDC-A2. TRENCHES SHALL BE EXCAVATED ALONG STRAIGHT LINES BEFORE CONDUITS ARE LAID SO THE ELEVATION CAN BE ADJUSTED. IF NECESSARY, TO AVOID UNSEEN OBSTRUCTIONS. MANUFACTURED BENDS SHALL HAVE A MINIMUM RADIUS 36" FOR CONDUITS.
  4. ALL CONDUITS ENTERING THE SDC-A2 (FROM BELOW GRADE) SHALL BE STUBBED UP TO 14" ABOVE SUB-GRADE THRU THE HOLES SHOWN IN THE SDC-A2 BASE TEMPLATE DETAIL. STRAIGHT END BELL FITTING SHALL BE PROVIDED ON ALL TELCO AND SPARE CONDUITS AFTER CONDUITS ARE STUBBED INTO THE SDC-A2.
  5. SERVICES DISTRIBUTION CABINET-A2 TO BE PROVIDED BY THE OWNER AND INSTALLED BY THE CONTRACTOR.
  6. STUB-OUT 6" BEYOND CONCRETE SLAB FOR FUTURE CONNECTIONS. PROVIDE CAP ON END OF CONDUITS. PROVIDE MARKER (REBAR) AT END OF CONDUITS. MARKER SHALL BE DRIVEN SO THAT A MINIMUM OF 2 INCHES REMAINS ABOVE SUB-GRADE. EXPOSED PORTION OF REBAR TO BE PAINTED BRIGHT ORANGE.
  7. ALL CONDUITS ENTERING THE SDC-A2 SHALL BE SEALED WITH SEALANTS THAT ARE IDENTIFIED FOR USE WITH THE CABLE INSULATION, SHIELD, OR OTHER COMPONENTS. A BEAD OF SILICONE SHALL BE PLACED AROUND ALL CONDUIT PENETRATIONS INTO THE SDC-A2.



**SDC-A2 BASE TEMPLATE DETAIL**  
SCALE: NTS

ISSUED FOR PERMITTING	BY	DATE	REVISION DESCRIPTION	BY	
NO.	DATE	REVISION DESCRIPTION			

**BELL SOUTH Carolinas PGS, LP**

09-368-135-A

ENLARGED SITE PLAN

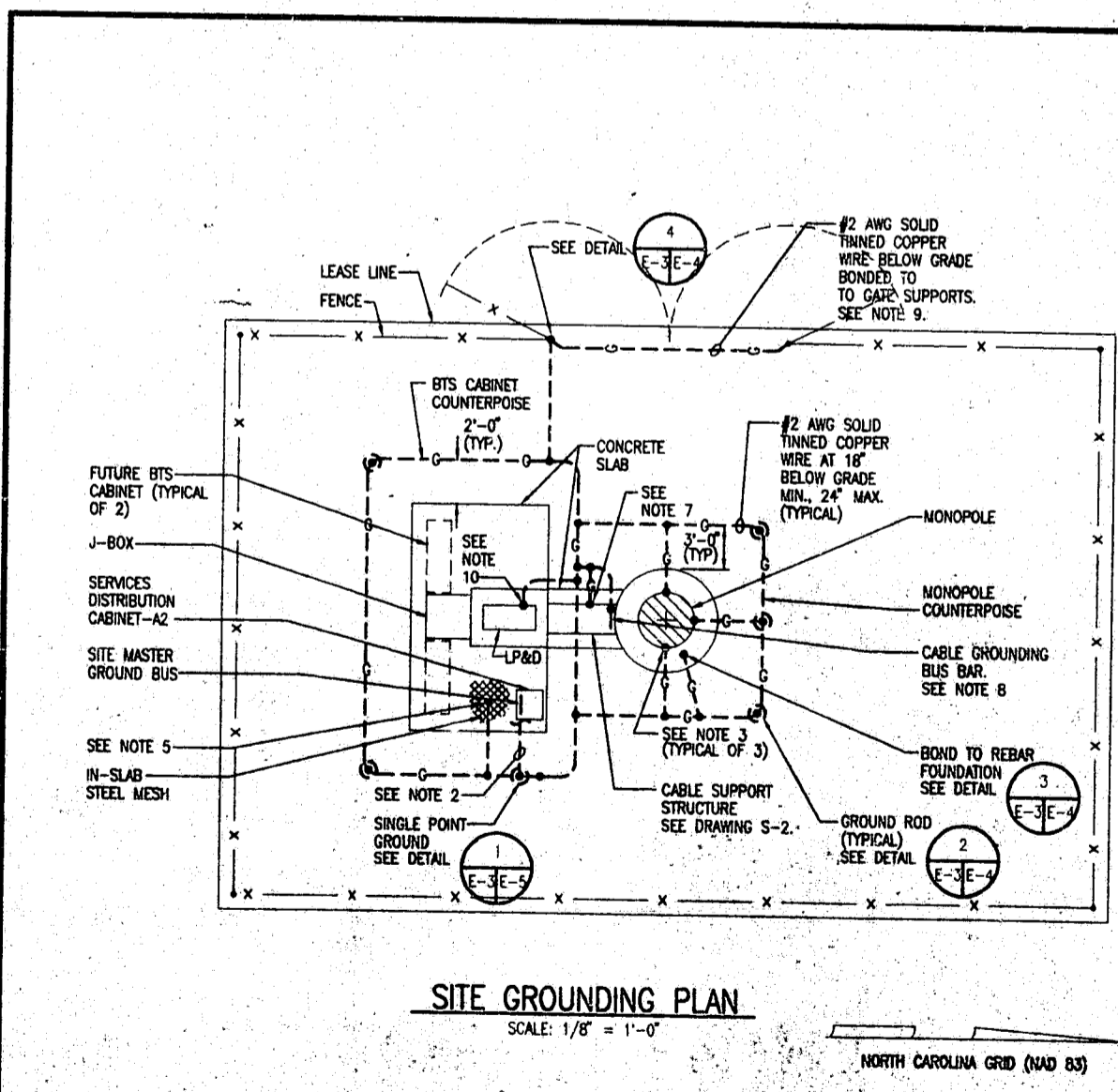
copyright © 1998

**Mediamont Osen-lensley**  
REGISTERED PROFESSIONAL ENGINEER  
2323 Research Drive  
P.O. Office Box 3138 Raleigh, NC 27622-1328  
Tel: 919/752-5211 Fax: 919/752-5228

**SEAL**  
NORTH CAROLINA PROFESSIONAL ENGINEER  
SEAL 15061  
7-25-96  
ARTHUR L. ANCHORS ENGINEER

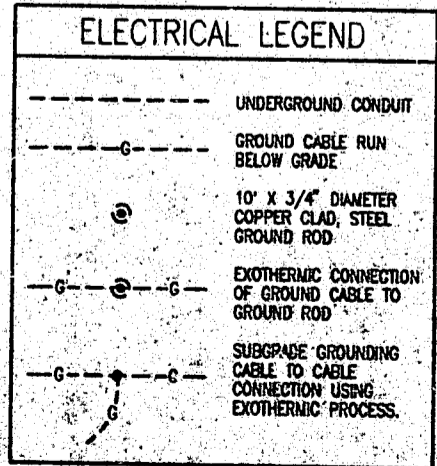
SEAL NOT VALID UNLESS SIGNED AND DATED

PROJECT MANAGER A. LATHAM	DEPARTMENT MANAGER A. ANCHORS
LEAD DESIGN PROJ. R. WITTY	CHECKED A. ANCHORS
DRAWN G. SANDRUM	DATE 7/9/98
PROJECT NUMBER 22597-02	DRAWING NUMBER E-2



**SITE GROUNDING PLAN**  
SCALE: 1/8" = 1'-0"

- NOTES:**
1. THE CONTRACTOR SHALL NOTIFY THE CONSTRUCTION MANAGER WHEN THE GROUNDING SYSTEM IS COMPLETE. THE CONSTRUCTION MANAGER SHALL INSPECT THE GROUNDING SYSTEM PRIOR TO BACKFILLING.
  2. ROUTE #2/0 BARE STRANDED COPPER GROUND WIRE THRU 1 1/2" PVC CONDUIT TO SERVICES DISTRIBUTION CABINET-A2. CONNECT TO SITE MASTER GROUND BUS. SEE DRAWING E-2.
  3. BOND TO OUTSIDE SURFACE OF EACH TOWER LEG BY EXOTHERMIC WELD.
  4. MINIMUM SPACING BETWEEN GROUND RODS 5'-0".
  5. CADWELD COPPER WIRE TO STEEL MESH USING CADWELD TYPE PT CONNECTIONS.
  6. GROUND CONDUCTOR BENDS SHALL NOT BE LESS THAN 8" RADIUS.
  7. PROVIDE 10' OF GROUND WIRE COILED UP AT THE EDGE OF THE CONCRETE SLAB FOR FUTURE CONNECTION TO CABLE SUPPORT STRUCTURE.
  8. THE CABLE GROUNDING BUS BAR TO BE PROVIDED BY THE TOWER MANUFACTURER. PROVIDE 10' OF GROUND WIRE COILED UP FOR FUTURE CONNECTION TO THE CABLE GROUNDING BUS BAR.
  9. WHEN BTS CABINET OR TOWER COUNTERPOISE IS WITHIN THREE (3) FEET OF GATE, BOND GATE POST DIRECTLY TO COUNTERPOISE WITH #2 AWG SOLID TINNED COPPER WIRE AND OMIT GATE POST-TO GATE POST GROUND WIRE.
  10. PROVIDE 10' OF GROUND WIRE COILED UP AT THE EDGE OF THE LP&D LOCATION FOR FUTURE CONNECTION TO THE LP&D GROUND BAR.



ISSUED FOR PERMITTING	BY	DATE	REVISION DESCRIPTION	BY	
NO.	DATE	REVISION DESCRIPTION			

**BELL SOUTH Carolinas PGS, LP**

09-368-135-A

SITE GROUNDING PLAN

copyright © 1998

**Mediamont Osen-lensley**  
REGISTERED PROFESSIONAL ENGINEER  
2323 Research Drive  
P.O. Office Box 3138 Raleigh, NC 27622-1328  
Tel: 919/752-5211 Fax: 919/752-5228

**SEAL**  
NORTH CAROLINA PROFESSIONAL ENGINEER  
SEAL 15061  
7-25-96  
ARTHUR L. ANCHORS ENGINEER

SEAL NOT VALID UNLESS SIGNED AND DATED

96-57-138  
**APPROVED**  
RJD 11-26-96  
JHT 11-26-96

PROJECT MANAGER A. LATHAM	DEPARTMENT MANAGER A. ANCHORS
LEAD DESIGN PROJ. R. WITTY	CHECKED A. ANCHORS
DRAWN G. SANDRUM	DATE 7/9/98
PROJECT NUMBER 22597-02	DRAWING NUMBER E-3