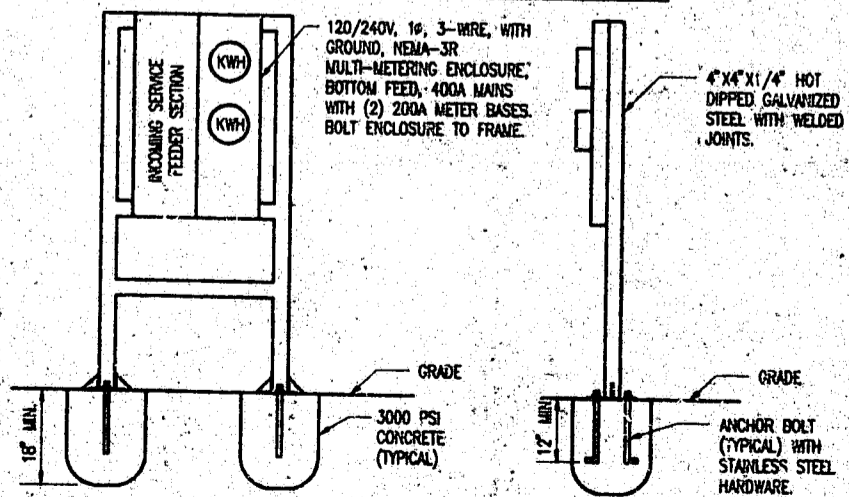


SERVICES DISTRIBUTION													
PANEL NAME		LOCATION		MAINS		CABINET MTG		SURFACE MTG		ENCLOSURE NEMA TYPE			
MDP		CABINET-A2		200A MLO		SURFACE MTG		SURFACE MTG		1			
VOLTS: 120/240, PHASE: 1 Ø, WIRE: 3 W., 60 HZ., MIN. INTERRUPTING RATING: 10,000 AMPERES													
LOAD SERVED	BRANCH CIRCUIT CONDUIT & WIRING	BREAKER POLE	AMP	KVA	CKT	Ø	CKT	KVA	BREAKER AMP	POLE	BRANCH CIRCUIT CONDUIT & WIRING	LOAD SERVED	
BTS CABINET	3#8, #10G-3/4" C	2	50	4.2	1	A	7**	1.68	20	2	2#12, #12G-3/4" C	TOWER OBSTRUCTION LTG CONTROLLER	
				4.2	2	B	8**	1.68					
BTS CABINET	3#8, #10G-3/4" C	2	50	4.2	3	A	9		10	1		SPARE	
				4.2	4	B	10		15	1		SPARE	
SPACE					5	A	11		15	1		SPARE	
FAN - SDC-A2	2#14, #14G-3/4" C	1	10	0.72	6	B	12*	0.2	15	1	2#12, #12G-3/4" C	RECPT-SDC-A2	
						A							
						B							
						A							
						B							
						A							
						B							
CONNECTED KVA PHASE A: 10.08		CONNECTED KVA PHASE B: 11.00		TOTAL KVA: 21.08		TOTAL NUMBER POLES: 12							

REMARKS: 1. \* PROVIDE GFI BREAKER  
 2. MDP PROVIDED WITHIN SERVICES DISTRIBUTION CABINET-A2  
 3. \*\* CONTRACTOR TO PROVIDE AND INSTALL BREAKERS.

**PANELBOARD SCHEDULE**  
 SCALE: NTS



**1**  
 E-2 | E-6  
 NO SCALE  
 DUAL METERING ENCLOSURE/MOUNTING DETAIL

NO.	DATE	REVISION DESCRIPTION	BY	APP.

**BELLSOUTH**  
 Carolina PCS, L.P.

09-368-135-A

PANELBOARD SCHEDULE

copyright © 1998  
**Richard Ober-Hensley**  
 PROFESSIONAL ENGINEER  
 233 Riverside Drive  
 Fort Collins, CO 80526-1597  
 Tel: 970-782-0211 Fax: 970-782-0202

SEAL NOT VALID UNLESS SIGNED AND DATED

90-EP-138  
**APPROVED**  
 1/25 11-20-96  
 JHT 11-20-96

PROJECT MANAGER A. LABRAN	DEPARTMENT MANAGER A. ANCHORS
LEAD DESIGNER M. WEST	CHECKED A. ANCHORS
DATE 7/20/96	DATE 7/20/96
PROJECT NUMBER 22597-02	DRAWING NUMBER E-6