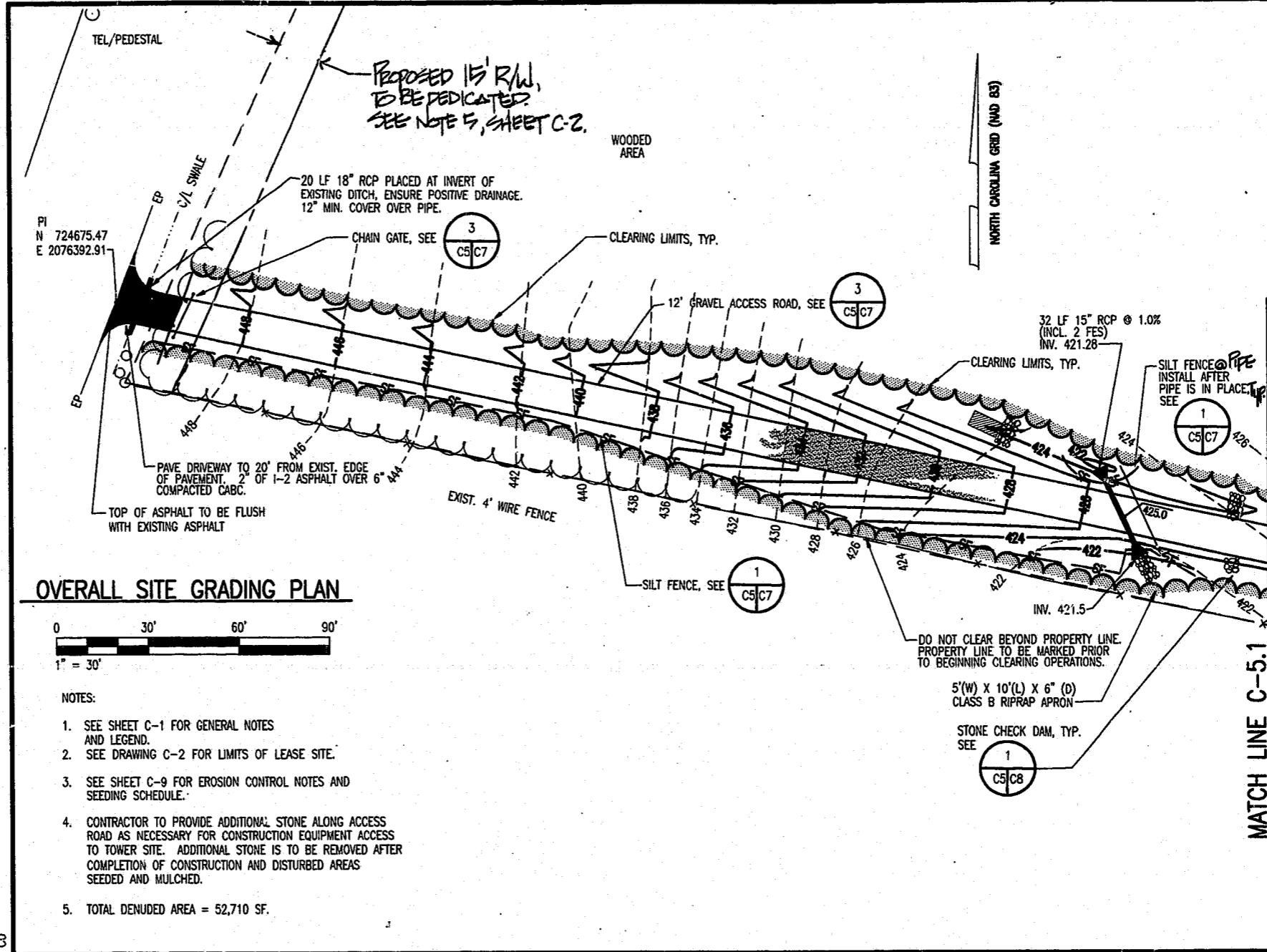


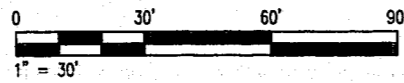
Filename = K:\CIV\22597\CIV368\142H\R142HC5
 Menuname = T:\R13\GM\GM-TEL

AutoCAD Version = 13.04
 Username = Henry Simpson, Piedmont

02-18-1997
 14:53:22



OVERALL SITE GRADING PLAN



NOTES:

- SEE SHEET C-1 FOR GENERAL NOTES AND LEGEND.
- SEE DRAWING C-2 FOR LIMITS OF LEASE SITE.
- SEE SHEET C-9 FOR EROSION CONTROL NOTES AND SEEDING SCHEDULE.
- CONTRACTOR TO PROVIDE ADDITIONAL STONE ALONG ACCESS ROAD AS NECESSARY FOR CONSTRUCTION EQUIPMENT ACCESS TO TOWER SITE. ADDITIONAL STONE IS TO BE REMOVED AFTER COMPLETION OF CONSTRUCTION AND DISTURBED AREAS SEEDDED AND MULCHED.
- TOTAL DENUDED AREA = 52,710 SF.

LOPED R/W
 NOTE

B	2/19/97	ADDED SILT FENCE	BY	OS
A	1/31/97	ISSUED FOR PERMITTING, DGS AND OWNERS REVIEW	BY	OS
NO.	DATE	REVISION DESCRIPTION	BY	NO.

BELLSOUTH
 Carolinas PCS, L.P.

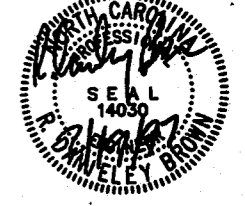
09-368-142-H

OVERALL SITE GRADING PLAN

copyright © 1997

Piedmont Ober-Hensley

2321 Remondale Drive
 Post Office Box 31388, Raleigh, NC 27622-1388
 Tel: 919/782-2311 Fax: 919/782-2823



SEAL NOT VALID UNLESS SIGNED AND DATED

MATCH LINE C-5.1

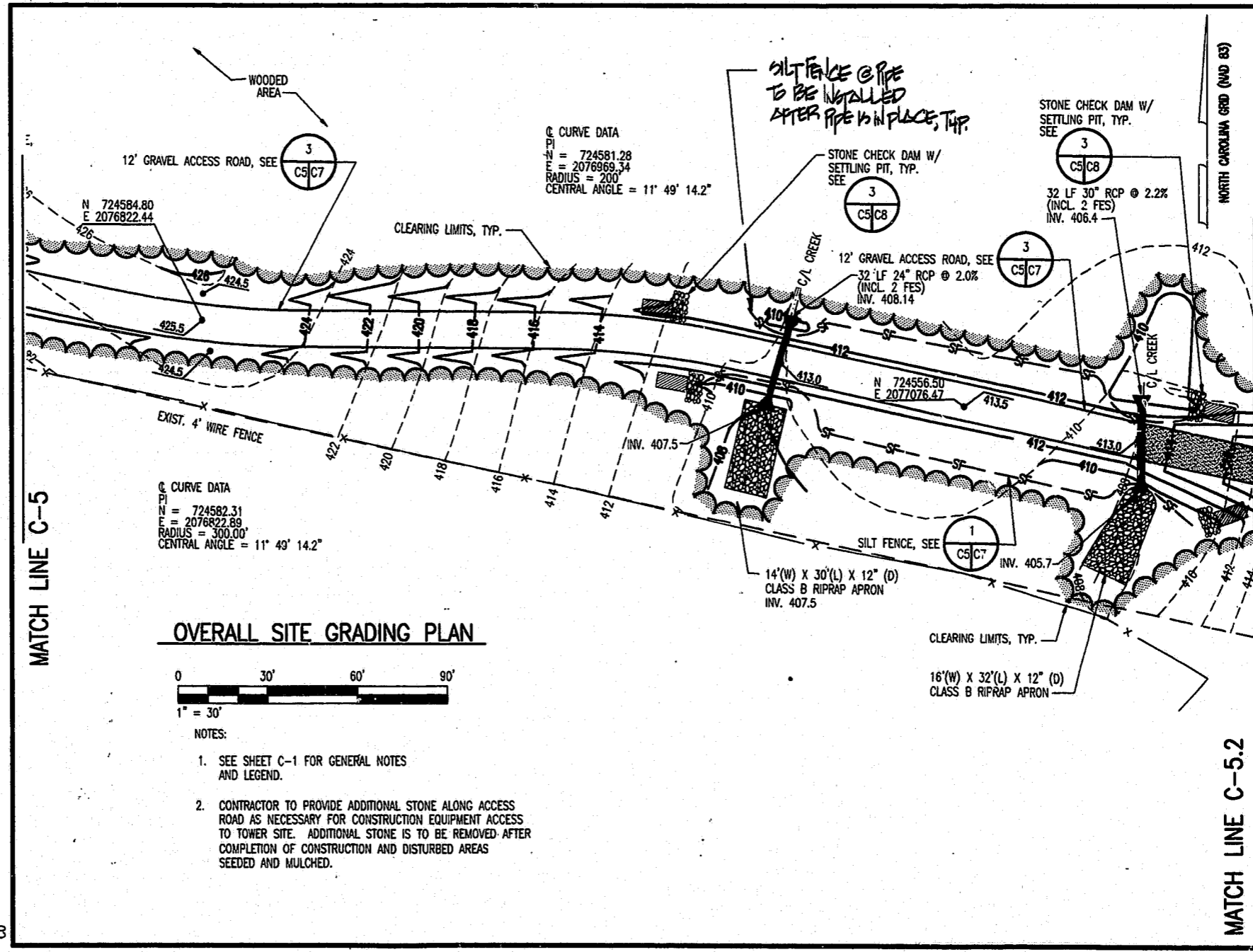
PROJECT MANAGER J. GARDEAU	DEPARTMENT MANAGER J. LATHAM
LEAD DESIGN PROP. R. FERLUSON	CHECKED D. BROWN/A. BECKMAN
DRAWN H. SIMPSON	DATE JANUARY 15, 1997
PROJECT NUMBER 22597-02	DRAWING NUMBER C-5

CONSTRUCTION DOCUMENTS
 RALEIGH OFFICE

Filename = K:\CIV\22597\CIV368\142H\R142HC5
 Menuname = T:\R13\GM\GM-TEL

AutoCAD Version = 13.04
 Username = Henry Simpson, Piedmont

02-18-1997
 14:52:20



OVERALL SITE GRADING PLAN



NOTES:

- SEE SHEET C-1 FOR GENERAL NOTES AND LEGEND.
- CONTRACTOR TO PROVIDE ADDITIONAL STONE ALONG ACCESS ROAD AS NECESSARY FOR CONSTRUCTION EQUIPMENT ACCESS TO TOWER SITE. ADDITIONAL STONE IS TO BE REMOVED AFTER COMPLETION OF CONSTRUCTION AND DISTURBED AREAS SEEDDED AND MULCHED.

B	2/19/97	ADDED SILT FENCE	BY	OS
A	1/31/97	ISSUED FOR PERMITTING, DGS AND OWNERS REVIEW	BY	OS
NO.	DATE	REVISION DESCRIPTION	BY	NO.

BELLSOUTH
 Carolinas PCS, L.P.

09-368-142-H

OVERALL SITE GRADING PLAN

copyright © 1997

Piedmont Ober-Hensley

2321 Remondale Drive
 Post Office Box 31388, Raleigh, NC 27622-1388
 Tel: 919/782-2311 Fax: 919/782-2823



SEAL NOT VALID UNLESS SIGNED AND DATED

MATCH LINE C-5.2

PROJECT MANAGER J. GARDEAU	DEPARTMENT MANAGER J. LATHAM
LEAD DESIGN PROP. R. FERLUSON	CHECKED D. BROWN/A. BECKMAN
DRAWN H. SIMPSON	DATE JANUARY 15, 1997
PROJECT NUMBER 22597-02	DRAWING NUMBER C-5.1

97.5P-034
APPROVED
 02/18/97
 TM 4-3-97