

SOIL & EROSION CONTROL NOTES

- 1) THE CONTRACTOR SHALL FURNISH AND MAINTAIN ALL NECESSARY BARRICADES WHILE ROADWAY FRONTAGE IMPROVEMENTS ARE BEING MADE.
- 2) THE CONSTRUCTION OF THE SITE WILL INITIATE WITH THE INSTALLATION OF EROSION CONTROL MEASURES SUFFICIENT TO CONTROL SEDIMENT DEPOSITS AND EROSION. ALL SEDIMENT CONTROL WILL BE MAINTAINED UNTIL ALL UPSTREAM GROUND WITHIN THE CONSTRUCTION AREA HAS BEEN COMPLETELY STABILIZED WITH PERMANENT VEGETATION AND ALL ROADS/DRIVEWAYS HAVE BEEN PAVED. SEE SEEDING SCHEDULE THIS SHEET.
- 3) EROSION CONTROL DEVICES SHALL BE INSTALLED BEFORE GROUND DISTURBANCE OCCURS. THE LOCATION OF SOME OF THE EROSION CONTROL DEVICES MAY HAVE TO BE ALTERED FROM SHOWN ON THE APPROVED PLANS IF DRAINAGE PATTERNS DURING CONSTRUCTION ARE DIFFERENT FROM THE FINAL PROPOSED DRAINAGE PATTERNS. IT IS THE CONTRACTOR'S RESPONSIBILITY TO ACCOMPLISH EROSION CONTROL FOR ALL DRAINAGE PATTERNS CREATED AT VARIOUS STAGES DURING CONSTRUCTION. ANY DIFFICULTY IN CONTROLLING EROSION DURING ANY PHASE OF CONSTRUCTION SHALL BE REPORTED TO THE ENGINEER IMMEDIATELY!!
- 4) ALL SILT BARRIERS MUST BE PLACED AS ACCESS IS OBTAINED DURING CLEARING. NO GRADING SHALL BE DONE UNTIL SILT BARRIER IS INSTALLED.
- 5) CONTRACTOR SHALL MAINTAIN ALL EROSION CONTROL MEASURES UNTIL PERMANENT VEGETATION HAS BEEN ESTABLISHED. CONTRACTOR SHALL CLEAN OUT ALL SEDIMENT PONDS WHEN REQUIRED BY THE ENGINEER OR THE CITY INSPECTOR. CONTRACTOR SHALL INSPECT EROSION CONTROL MEASURES AT THE END OF EACH WORKING DAY TO ENSURE MEASURES ARE FUNCTIONING PROPERLY.
- 6) THE CONTRACTOR SHALL REMOVE ACCUMULATED SILT WHEN THE SILT REACHES 12" IN HEIGHT WITHIN SILT FENCE BARRIERS.
- 7) FAILURE TO INSTALL, OPERATE OR MAINTAIN ALL EROSION CONTROL MEASURES WILL RESULT IN ALL CONSTRUCTION BEING STOPPED ON THE JOB SITE UNTIL SUCH MEASURES ARE CORRECTED BACK TO CITY STANDARDS.
 - a) ALL CONSTRUCTION SHALL CONFORM TO CITY STANDARDS AND SPECIFICATIONS.
 - b) A COPY OF THE APPROVED LAND DISTURBANCE PLAN AND PERMIT SHALL BE PRESENT ON THE JOB SITE WHENEVER LAND DISTURBANCE ACTIVITY IS IN PROGRESS.
- 10) PROVIDE CONSTRUCTION EXIT AS SHOWN ON PLANS AND MAINTAIN DURING CONSTRUCTION.
- 11) PROVIDE SILT GATES AT ALL INLETS.
- 12) ANY DISTURBED AREA LEFT EXPOSED FOR A PERIOD GREATER THAN 45 DAYS SHALL BE STABILIZED WITH TEMPORARY SEEDING.
- 13) EROSION CONTROL MEASURES WILL BE MAINTAINED AT ALL TIMES. ADDITIONAL EROSION AND SEDIMENT CONTROL MEASURES WILL BE INSTALLED IF DEEMED NECESSARY BY ONSITE INSPECTION.

PIEDMONT VEGETATIVE COVERS

MONTH	TEMPORARY SEED	RATE/ACRE	PERMANENT SEED	RATE/ACRE
1. JANUARY	RYEGRASS	40-50 LB.	UNHULLED BERMUDA SERICEA LESPEDEZA ²	8-10 LB. 30-40 LB. ¹
2. FEBRUARY			UNHULLED BERMUDA SERICEA LESPEDEZA ² FESCUE	8-10 LB. 30-40 LB. 30-50 LB.
3. MARCH	RYE ANNUAL LESPEDEZA WEEPING LOVEGRASS	2-3 BU. 20-25 LB. 4-6 LB.	UNHULLED BERMUDA SERICEA LESPEDEZA ² FESCUE	8-10 LB. 30-40 LB. 30-50 LB.
4. APRIL	RYE BROWN TOP MILLET ANNUAL LESPEDEZA SUDAN ANNUAL	2-3 BU. 30-40 LB. 20-25 LB. 35 LB.	WEEPING LOVEGRASS HULLED BERMUDA BAHIA	4-6 LB. 5-6 LB. 40-60 LB.
5. MAY	WEEPING LOVEGRASS SUDAN GRASS BROWN TOP MILLET	4-6 LB. 35 LB. 30-40 LB.	WEEPING LOVEGRASS HULLED BERMUDA BAHIA	4-6 LB. 5-6 LB. 40-60 LB.
6. JUNE	WEEPING LOVEGRASS SUDAN GRASS BROWN TOP MILLET	4-6 LB. 35 LB. 30-40 LB.	WEEPING LOVEGRASS HULLED BERMUDA BAHIA	4-6 LB. 5-6 LB. 40-60 LB.
7. JULY	WEEPING LOVEGRASS SUDAN GRASS BROWN TOP MILLET	4-6 LB. 35 LB. 30-40 LB.		
8. AUGUST	RYEGRASS WEEPING LOVEGRASS	40-50 LB. 4-6 LB.		
9. SEPTEMBER			TALL FESCUE	30-50 LB.
10. OCTOBER	WHEAT	2-3 BU.	UNHULLED BERMUDA SERICEA LESPEDEZA ² FESCUE	8-10 LB. 30-40 LB. 30-50 LB.
11. NOVEMBER	WHEAT	2-3 BU.	UNHULLED BERMUDA FESCE SERICEA LESPEDEZA	8-10 LB. 30-50 LB. 30-40 LB.
12. DECEMBER	RYE RYEGRASS WHEAT	2-3 BU. 40-50 LB. 2-3 BU.	UNHULLED BERMUDA SERICEA LESPEDEZA FESCUE	8-10 LB. 30-40 LB. 30-50 LB.

¹USE A MINIMUM OF 40 LBS. SCARIFIED SEED. REMAINDER MAY BE UNSCARIFIED, CLEAN HULLED SEED.

²USE EITHER COMMON SERALA, OR INTERSTATE SERICEA LESPEDEZA.

Filename = K:\CIV\22597\CV368\142H\142HC10
MenuName = T:\R13\GM\GM-TEL

AutoCAD Version = 13.c4g
Username = Henry Simpson, Piedmont

01-31-1997
07:56:54

CONSTRUCTION DOCUMENTS
RALEIGH OFFICE

A	1/21/97	ISSUED FOR PERMITTING, BUS AND OWNER'S REVIEW	BY	HS
NO.	DATE	REVISION DESCRIPTION	BY	CO

BELLSOUTH
Carolinas PCS, L.P.

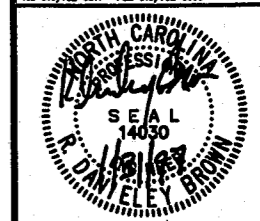
09-368-142-H

EROSION CONTROL NOTES
AND SEEDING SCHEDULE

copyright © 19 87

Piedmont Ober-Hensley

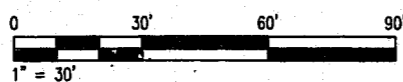
2301 Ramrook Drive
Post Office Box 31306, Raleigh, NC 27622-1306
Tel: 919/782-5311 Fax: 919/782-5805



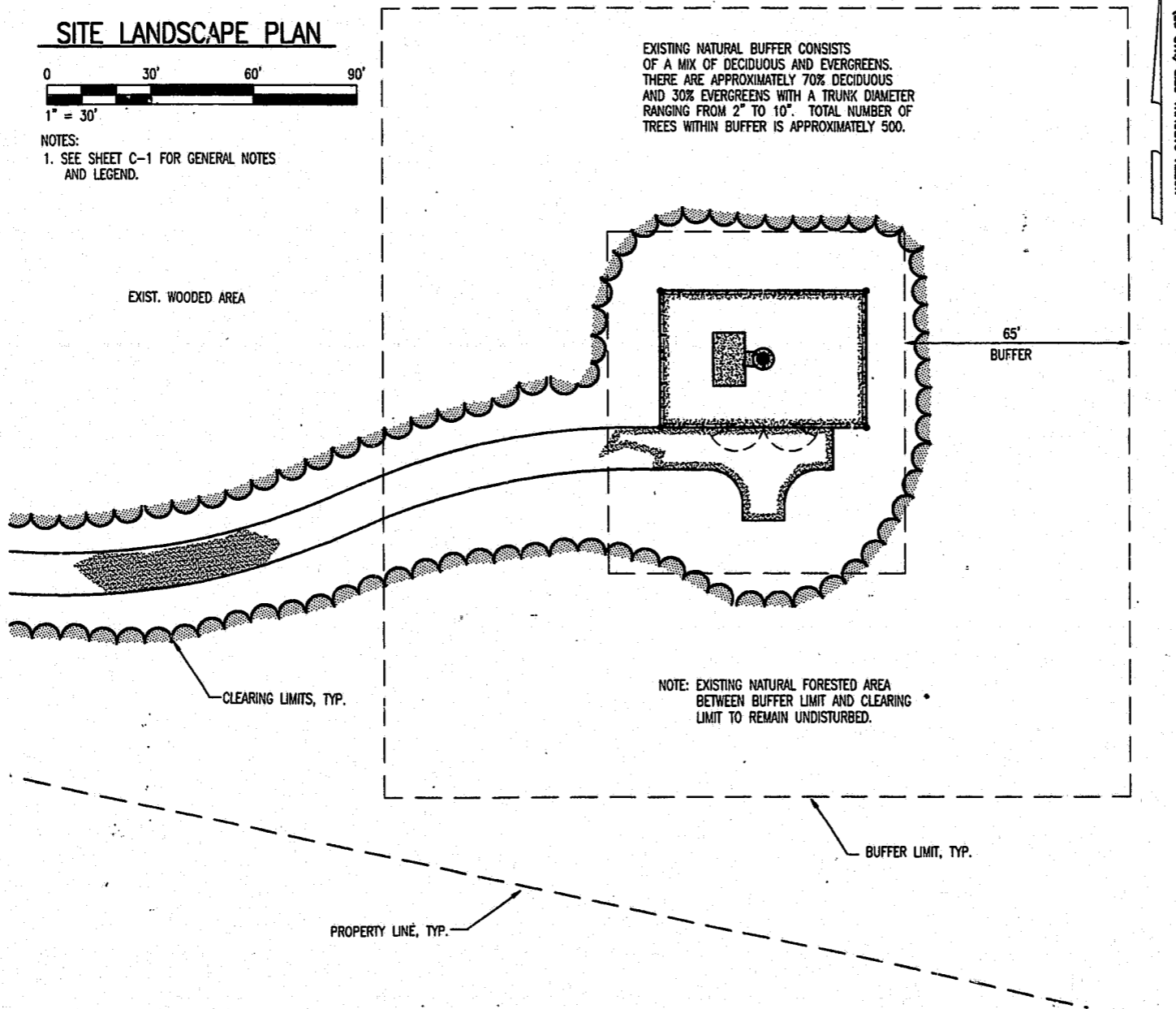
SEAL NOT VALID UNLESS SIGNED AND DATED

PROJECT MANAGER J. GARCEAU	DEPARTMENT MANAGER J. LATHAN
LEAD DESIGN PROP. R. FERGUSON	CHECKED J. BECKMAN/D. BROWN
DRAWN H. SIMPSON	DATE JANUARY 15, 1997
PROJECT NUMBER 22597-02	DRAWING NUMBER C-9

SITE LANDSCAPE PLAN



- NOTES:
1. SEE SHEET C-1 FOR GENERAL NOTES AND LEGEND.



Filename = K:\CIV\22597\CV368\142H\142HC10
MenuName = T:\R13\GM\GM-TEL

AutoCAD Version = 13.c4g
Username = Henry Simpson, Piedmont

02-18-1997
14:44:55

97-CP-034
APPROVED
02 4-3-97
TM 4-3-97

B	2/19/97	ADD BUFFER DESCRIPTION	BY	HS
A	1/21/97	ISSUED FOR PERMITTING, BUS AND OWNER'S REVIEW	BY	HS
NO.	DATE	REVISION DESCRIPTION	BY	CO

BELLSOUTH
Carolinas PCS, L.P.

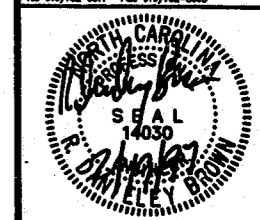
09-368-142-H

SITE LANDSCAPE
PLAN

copyright © 19 87

Piedmont Ober-Hensley

2301 Ramrook Drive
Post Office Box 31306, Raleigh, NC 27622-1306
Tel: 919/782-5311 Fax: 919/782-5805



SEAL NOT VALID UNLESS SIGNED AND DATED

PROJECT MANAGER J. GARCEAU	DEPARTMENT MANAGER J. LATHAN
LEAD DESIGN PROP. R. FERGUSON	CHECKED J. BECKMAN/D. BROWN
DRAWN H. SIMPSON	DATE JANUARY 15, 1997
PROJECT NUMBER 22597-02	DRAWING NUMBER C-10