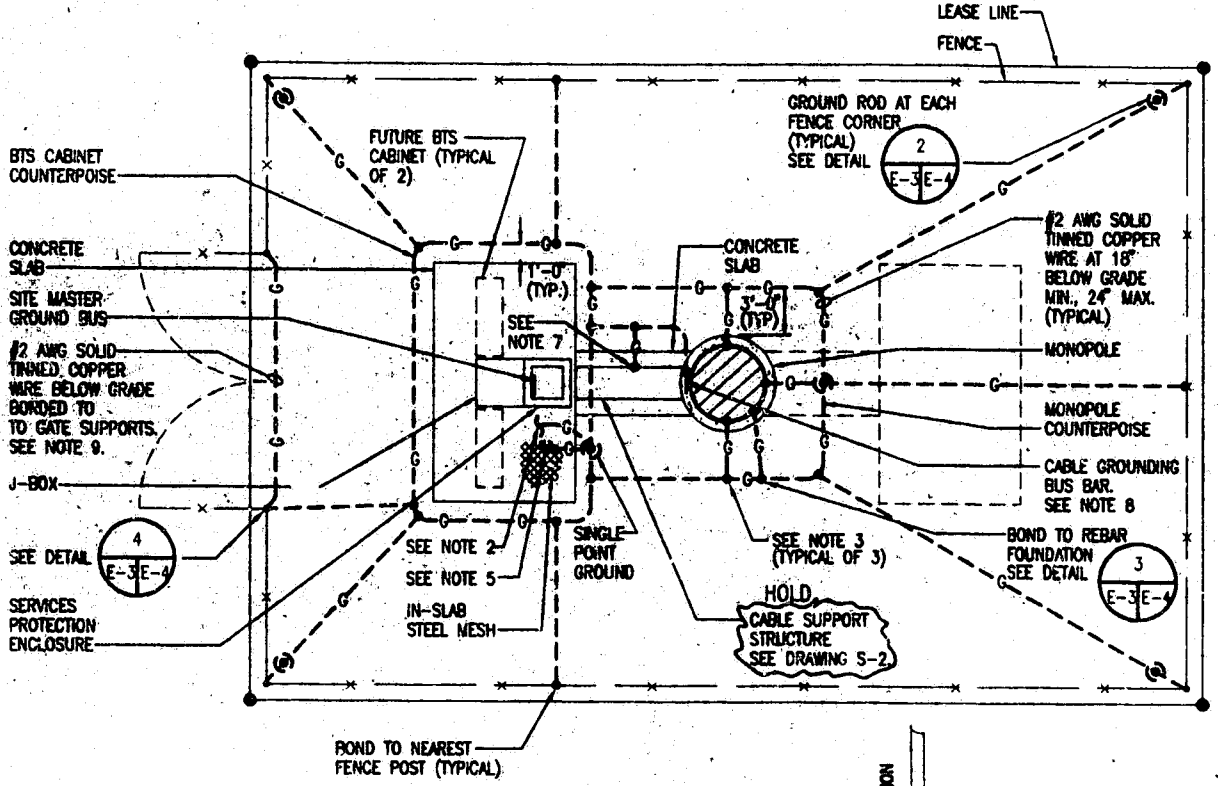


NOTES:

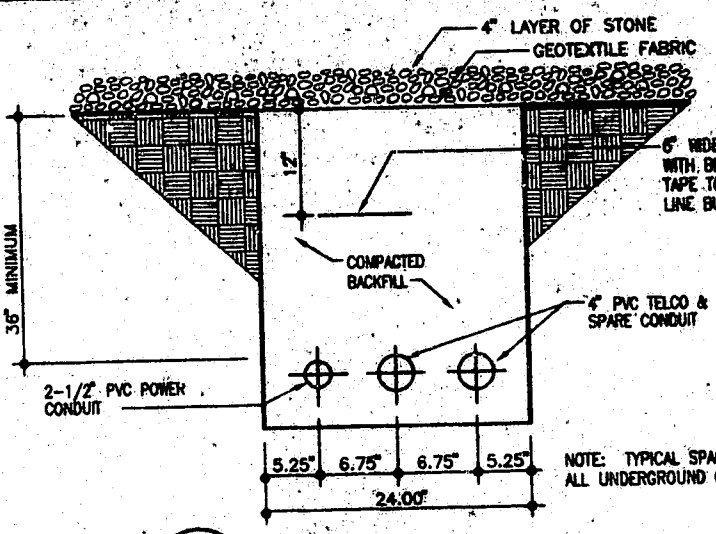
1. THE CONTRACTOR SHALL NOTIFY THE CONSTRUCTION MANAGER WHEN THE GROUNDING SYSTEM IS COMPLETE. THE CONSTRUCTION MANAGER SHALL INSPECT THE GROUNDING SYSTEM PRIOR TO BACKFILLING.
2. ROUTE #2 AWG BARE STRANDED COPPER GROUND WIRE THRU 1 1/2" PVC CONDUIT TO SERVICES PROTECTION ENCLOSURE-A3. CONNECT TO SITE MASTER GROUND BUS; SEE DRAWING E-2.
3. CONNECT TO GROUND LUG ON OUTSIDE SURFACE OF MONOPOLE.
4. MINIMUM SPACING BETWEEN GROUND RODS 5'-0".
5. CADWELD COPPER WIRE TO STEEL MESH USING CADWELD TYPE PT CONNECTIONS.
6. GROUND CONDUCTOR BENDS SHALL NOT BE LESS THAN 6" RADIUS.
7. PROVIDE 10' OF GROUND WIRE COILED UP AT THE EDGE OF THE CONCRETE SLAB FOR FUTURE CONNECTION TO CABLE SUPPORT STRUCTURE.
8. THE CABLE GROUNDING BUS BAR IS TO BE PROVIDED BY THE MONOPOLE MANUFACTURER. THE GROUND WIRE FOR THE CABLE GROUNDING BUS BAR IS TO BE ROUTED UP THROUGH THE MONOPOLE FOUNDATION AND 10' OF GROUND WIRE SHALL BE COILED UP FOR FUTURE CONNECTION TO THE CABLE GROUNDING BUS BAR.
9. WHEN BTS CABINET OR MONOPOLE COUNTERPOISE IS WITHIN THREE (3) FEET OF GATE, BOND GATE POST DIRECTLY TO COUNTERPOISE WITH #2 AWG SOLID TINNED COPPER WIRE AND OMIT GATE POST TO GATE POST GROUND WIRE.



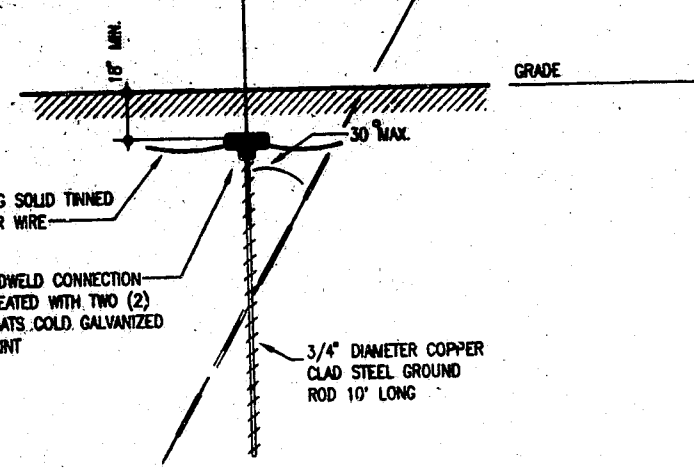
SITE GROUNDING PLAN
SCALE: 1/8" = 1'-0"

ELECTRICAL LEGEND	
	UNDERGROUND CONDUIT
	GROUND CABLE RUN BELOW GRADE
	10' X 3/4" DIAMETER COPPER CLAD, STEEL GROUND ROD
	EXOTHERMIC CONNECTION OF GROUND CABLE TO GROUND ROD
	SUBGRADE GROUNDING CABLE TO CABLE CONNECTION USING EXOTHERMIC PROCESS.

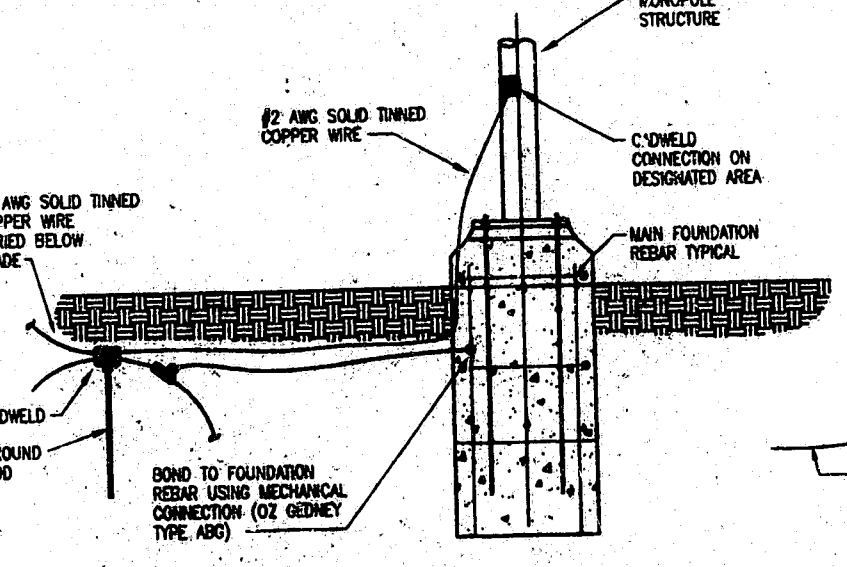
A 7/18/98 ISSUED FOR PLANNING, BIDS AND ORDER REVIEW		BY	DA
NO.	DATE	REVISION DESCRIPTION	BY
BELLSOUTH Carrollinas PCS, L.P.			
09-368-054R-0			
SITE GROUNDING PLAN			
Copyright © 1998			
Arthur L. Anchors Professional Engineer No. 15061 12-15-98 ARTHUR L. ANCHORS ENGINEER			
SEAL NOT VALID UNLESS SIGNED AND DATED			
PROJECT MANAGER A. LATHAM	DEPARTMENT MANAGER A. ANCHORS	CHECKED A. ANCHORS	
LEAD DESIGNER R. BERT		DATE 11/20/98	
DESIGNER G. SUMERLIN		PROJECT NUMBER 22597-02	DRAWING NUMBER E-3



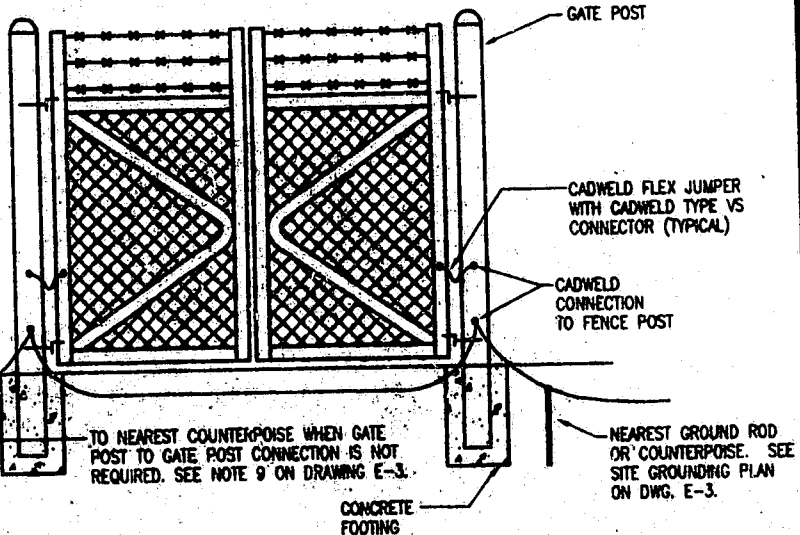
UTILITY TRENCH DETAIL
SCALE: NTS



TYPICAL GROUND ROD
SCALE: NTS



GROUNDING DETAIL FOR MONOPOLE FOUNDATION
SCALE: NTS



GROUNDING AT FENCE GATE POST
SCALE: NTS

A 12/18/98 ISSUED FOR PLANNING, BIDS AND ORDER REVIEW		BY	DA
NO.	DATE	REVISION DESCRIPTION	BY
BELLSOUTH Carrollinas PCS, L.P.			
09-368-054R-0			
DETAILS			
Copyright © 1998			
Arthur L. Anchors Professional Engineer No. 15061 12-15-98 ARTHUR L. ANCHORS ENGINEER			
SEAL NOT VALID UNLESS SIGNED AND DATED			
PROJECT MANAGER A. LATHAM	DEPARTMENT MANAGER A. ANCHORS	CHECKED A. ANCHORS	
LEAD DESIGNER R. BERT		DATE 11/20/98	
DESIGNER G. SUMERLIN		PROJECT NUMBER 22597-02	DRAWING NUMBER E-4