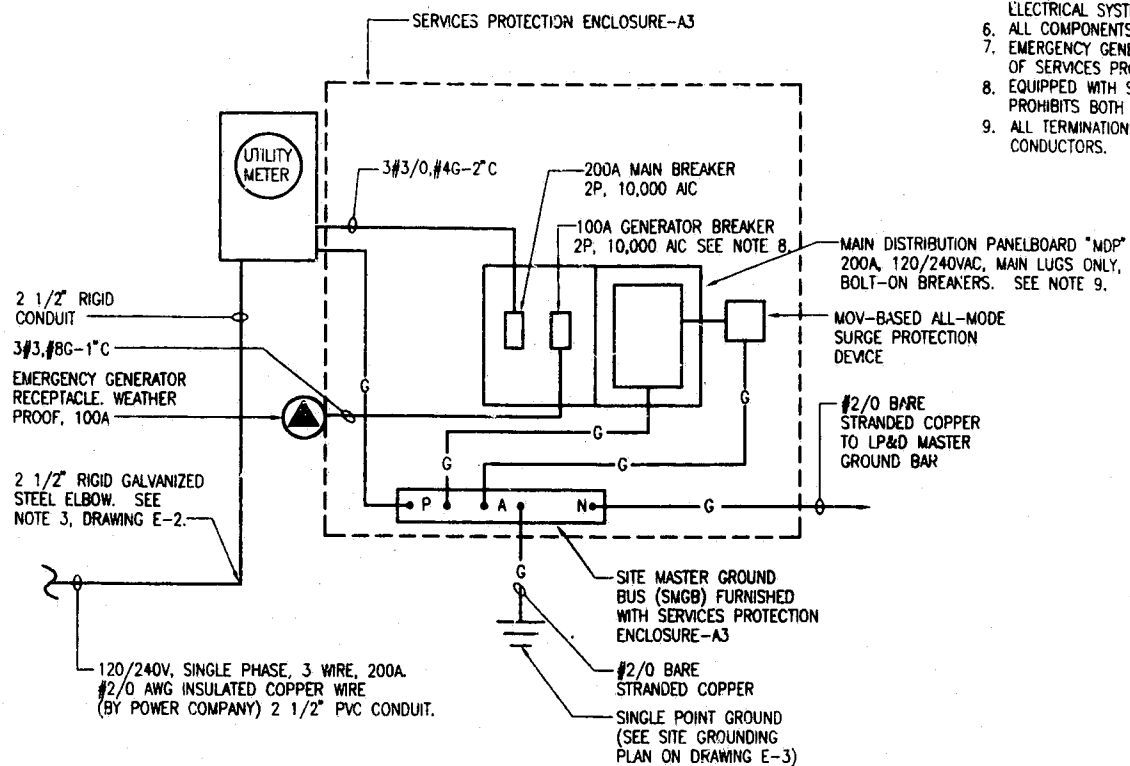


**NOTES:**

1. METER SOCKET TO BE SUPPLIED BY OR AS PER POWER COMPANY REQUIREMENTS.
2. METER TO BE LOCATED 3'-0" MINIMUM ABOVE FINISHED GRADE.
3. GROUND FAULT PROTECTION REQUIRED FOR UTILITY RECEPTACLES.
4. SERVICE NEUTRAL TO BE GROUNDED TO SMGB.
5. WHITE/NEUTRAL, GREEN/GROUND SHALL BE MAINTAINED THROUGHOUT THE SITE ELECTRICAL SYSTEM.
6. ALL COMPONENTS SHALL BE PREWIRED WITHIN THE SERVICES PROTECTION ENCLOSURE-A3.
7. EMERGENCY GENERATOR RECEPTACLE SHALL BE PREWIRED AND MOUNTED ON EXTERIOR OF SERVICES PROTECTION ENCLOSURE-A3.
8. EQUIPPED WITH SQUARE "D" WALKING BEAM MECHANICAL INTERLOCK. INTERLOCK PROHIBITS BOTH POWER SOURCES FROM BEING IN THE ON POSITION SIMULTANEOUSLY.
9. ALL TERMINATIONS SHALL BE LISTED AND IDENTIFIED FOR USE WITH 75°C RATED CONDUCTORS.



**SERVICES PROTECTION ENCLOSURE-A3  
INTERCONNECTION DIAGRAM**

SCALE: NTS

A	12/18/94	ISSUED FOR PERMITTING, BIDS AND OWNER REVIEW	BY	AA
NO.	DATE	REVISION DESCRIPTION	BY	CD

**BELLSOUTH  
Carolinas PCS, L.P.**

09-368-054R-D

SERVICES PROTECTION  
ENCLOSURE

copyright © 19 83

**Richard Ober-Hensley**  
Professional Engineer

2301 Research Drive  
Raleigh, NC 27622-1348  
Tel: 919/782-5811 Fax: 919/782-5805



SEAL NOT VALID UNLESS SIGNED AND DATED

PROJECT MANAGER J. LATHAM	DEPARTMENT MANAGER A. ANCHORS
LEAD DESIGN PROF. R. WHITT	CHECKED A. ANCHORS
DRAWN G. SUMERLIN	DATE 11/30/95
PROJECT NUMBER 22597-02	DRAWING NUMBER E-5

PANEL NAME <u>MDP</u>		LOCATION <u>SERVICES PROTECTION ENCLOSURE-A3</u>		MAINS <u>200A MLO</u>		CABINET MTG <u>SURFACE MTG</u>		ENCLOSURE NEMA TYPE <u>1</u>				
VOLTS: <u>120/240</u> PHASE: <u>1 Ø</u> WIRE: <u>3 W.</u> 60 HZ., MIN. INTERRUPTING RATING: <u>10,000</u> AMPERES												
LOAD SERVED	BRANCH CIRCUIT CONDUIT & WIRING	BREAKER POLE	AMP	KVA	CKT	Ø	CKT	KVA	BREAKER AMP POLE	BRANCH CIRCUIT CONDUIT & WIRING	LOAD SERVED	
BTS CABINET	3#8, #10G-3/4\"C	2	50	4.2	1	A	2*	0.2	20	1	2#12, #12G-3/4\"C	RECPT-SERVICES PROTECTION ENCL--A3
				4.2	3	B	4*	0.2	20	1	2#12, #12G-3/4\"C	RECPT-BTS CABINET
BTS CABINET	3#8, #10G-3/4\"C	2	50	4.2	5	A	6	1.2	15	1	2#12, #12G-3/4\"C	VOLTAGE SENSOR
				4.2	7	B	8	1.2	15	1	2#12, #12G-3/4\"C	VOLTAGE SENSOR
SPACE					9	A	10	0.9	20	1	2#12, #12G-2\"C	SITE LIGHTING
					11	B	12	0.1	15	1	2#14, #14G-3/4\"C	SPE-A3 LIGHTS
TOWER OBSTRUCTION LTG CONTROLLER	2#12, #12G-3/4\"C	2	20	1.68	13	A	14	20	1		SPARE	
				1.68	15	B	16	20	1			
SPACE					17	A	18	20	1			
					19	B	20				SPACE	
					21	A	22					
					23	B	24					
CONNECTED KVA PHASE A: <u>12.38</u>		CONNECTED KVA PHASE B: <u>11.58</u>		TOTAL KVA: <u>23.96</u>								
REMARKS: 1. • PROVIDE GFI BREAKER										2. MDP PROVIDED WITHIN SERVICE PROTECTION ENCLOSURE		TOTAL NUMBER POLES: <u>24</u>

**PANELBOARD SCHEDULE**

SCALE: NTS

A	12/18/94	ISSUED FOR PERMITTING, BIDS AND OWNER REVIEW	BY	AA
NO.	DATE	REVISION DESCRIPTION	BY	CD

**BELLSOUTH  
Carolinas PCS, L.P.**

09-368-054R-D

PANELBOARD  
SCHEDULE

copyright © 19 83

**Richard Ober-Hensley**  
Professional Engineer

2301 Research Drive  
Raleigh, NC 27622-1348  
Tel: 919/782-5811 Fax: 919/782-5805



SEAL NOT VALID UNLESS SIGNED AND DATED

PROJECT MANAGER J. LATHAM	DEPARTMENT MANAGER A. ANCHORS
LEAD DESIGN PROF. R. WHITT	CHECKED A. ANCHORS
DRAWN G. SUMERLIN	DATE 11/30/95
PROJECT NUMBER 22597-02	DRAWING NUMBER E-6