

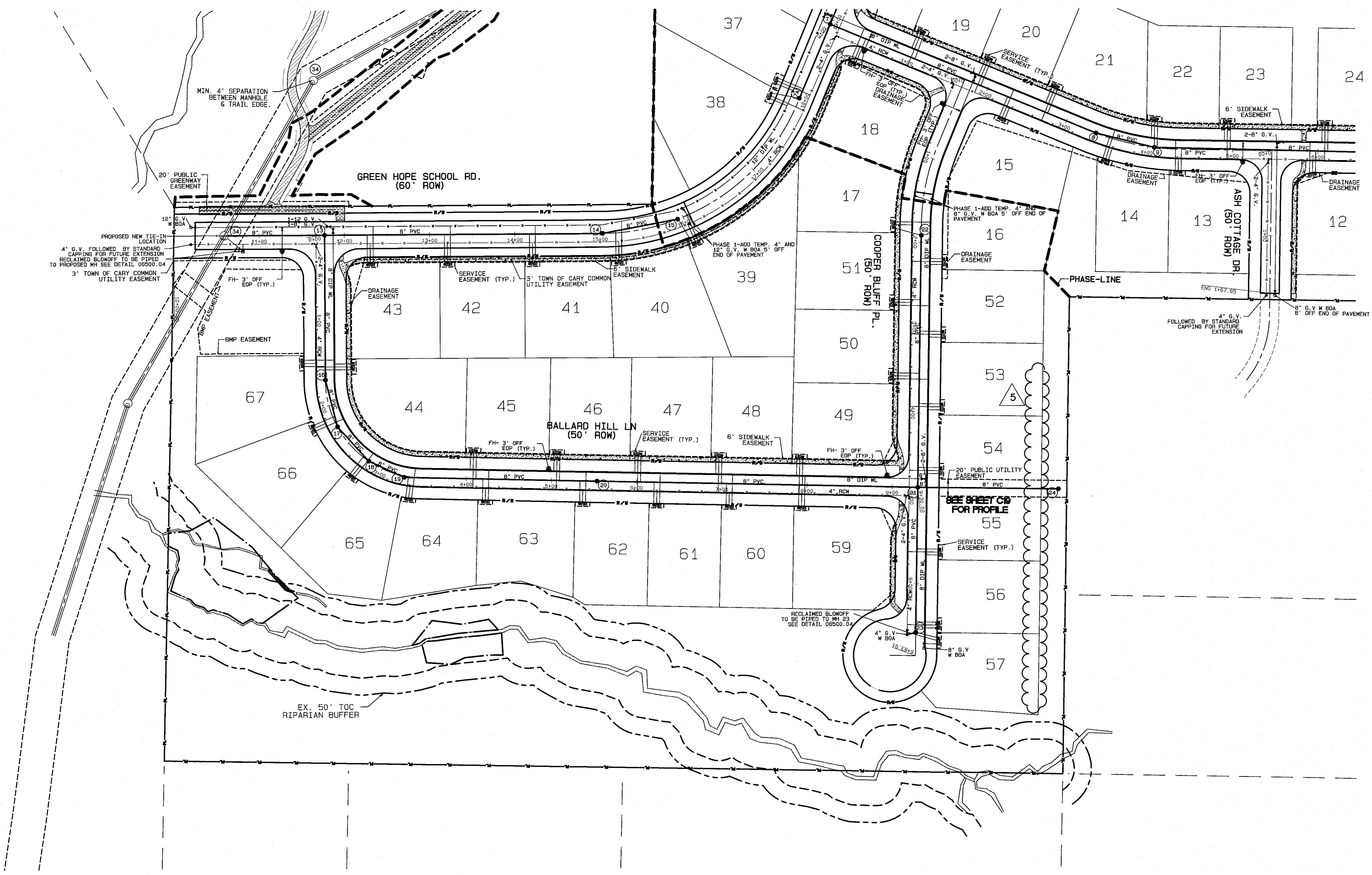


Hugh J. Gilleece and Associates
 875 Walnut Street
 Suite 360
 Cary, NC 27511
 BUSINESS LIC. # C-496
 Phone: (919)469-1101
 Fax: (919)460-7637

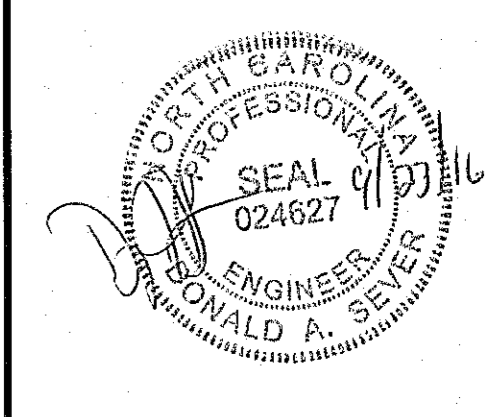


RESTRAINED PIPE JOINTS

VALVE SIZE	FEET
4"	32
6"	45
8"	59
12"	85



NO.	DATE	REVISION
1	05/02/13	TOWN OF CARY COMMENTS DATED 02/19/13
2	06/17/13	TOWN OF CARY COMMENTS DATED 05-26-13
3	08/06/13	TOWN OF CARY COMMENTS DATED 07-07-13
4	08/06/13	TOWN OF CARY FINAL SET
5	09/23/16	REMOVED DRAINAGE EASEMENT AT REAR OF LOTS 53-57

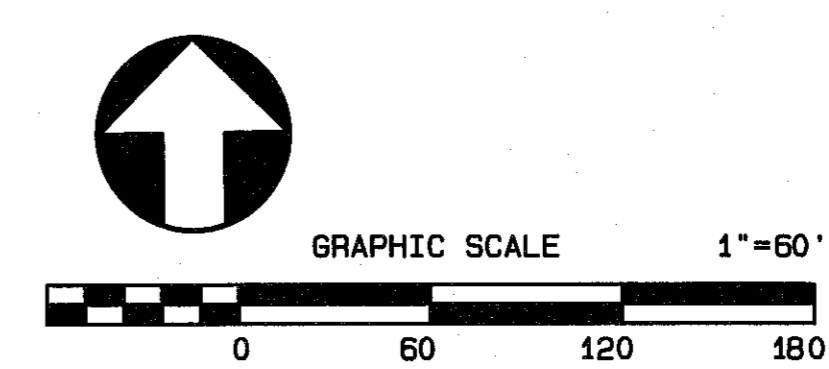


PHASE 2 UTILITY PLAN
 FOR
BELLEWOOD MANOR
 SITUATED AT
CARY
 WAKE COUNTY, NORTH CAROLINA

JOB # 3690.90
DSN/CHK BY: DAS
DWN BY: BAH
DATE: 02/14/2013
HRZ SCALE: 1" = 60'
VRT SCALE: NONE

SHEET NO.
C7

- GENERAL UTILITY NOTES:**
- SERVICES ALONG GREEN HOPE SCHOOL RD. LOCATED 7' OFF OF THE PROPOSED ROW AND WILL REQUIRE A UTILITY EASEMENT.
 - SERVICES ON ALL OTHER STREETS WITH NO SIDEWALKS WILL BE LOCATED 2' OFF THE ROW AND WILL REQUIRE UTILITY EASEMENT.
 - SERVICES ON ALL OTHER STREETS WITH SIDEWALKS WILL BE LOCATED 2' OFF THE BACK OF WALK AND WILL REQUIRE UTILITY EASEMENT.
 - WATERLINE IS TO BE RESTRAINED USING STANDARD THRUST BLOCKS. IF RETAINER GLANDS ARE USED, RESTRAINED JOINT PIPE MUST ALSO BE USED. SOIL CONDITIONS AND TYPE OF TRENCH MUST BE PROVIDED TO ENGINEER TO RUN PIPE RESTRAINT CALCULATIONS.
 - NO VALVE COVERS, SURFACE PLATES, ETC. SHALL BE LOCATED WITHIN THE ASPHALT TRAIL.



13-SB-002
 HTE# 13-911
 APPROVED TOWN OF CARY
 PLANNER *Kathleen* DATE 2/26/2016

Plot Date : 9/23/2016 Time: 4:38PM FILE: Y:\Jobs\3690.90\Williams Tract\dwg\Base Map Base_2.prt