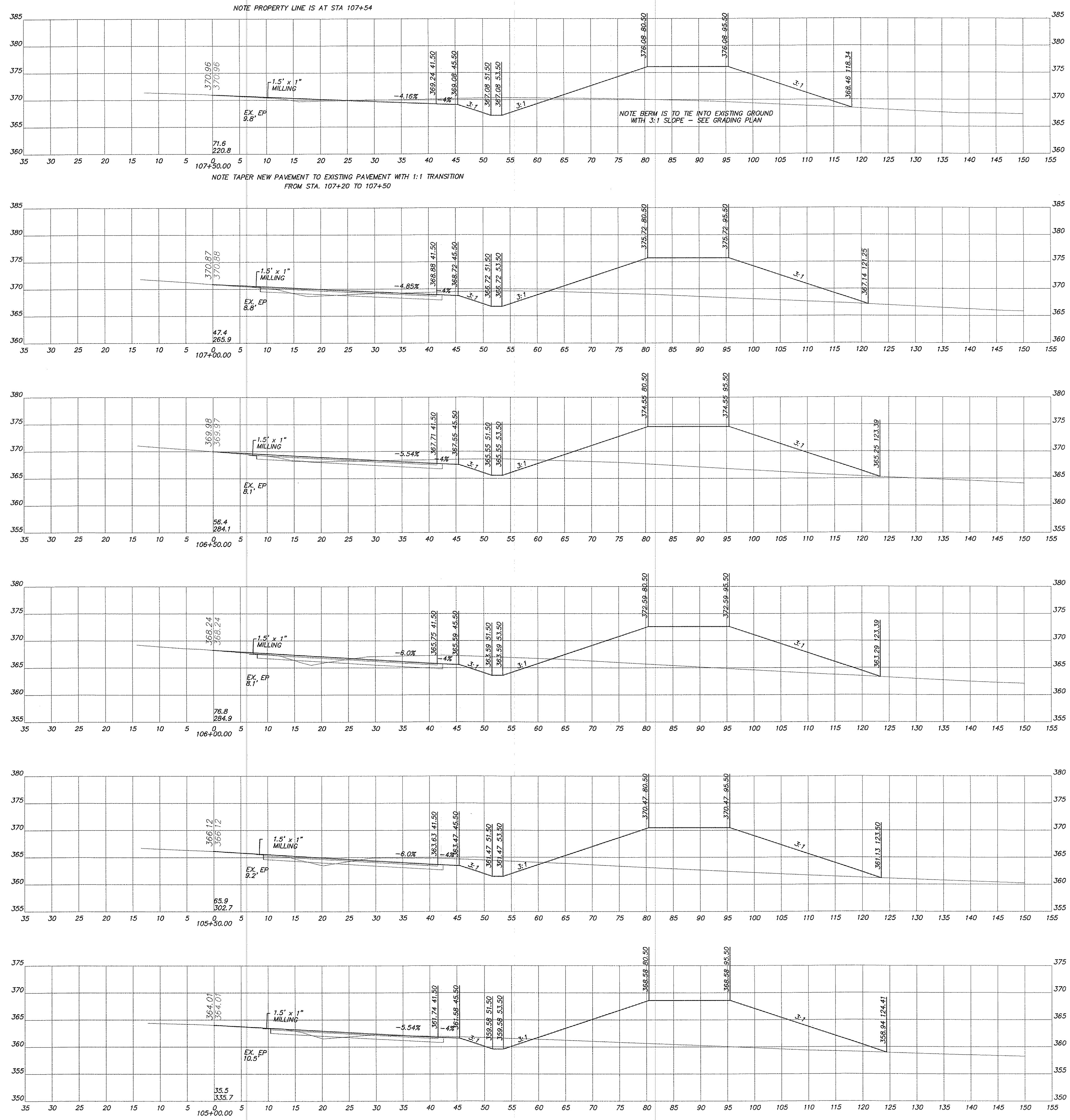


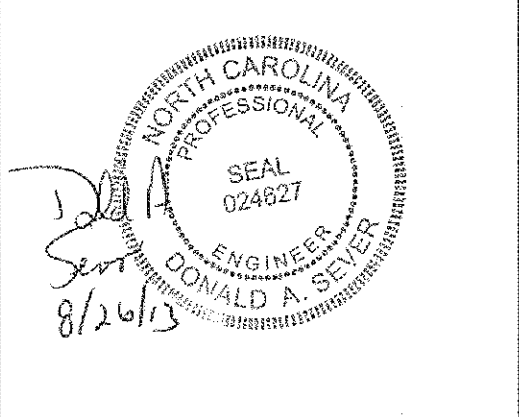


**Hugh J. Gillece
and Associates**

875 Walnut Street
Suite 360
Cary, NC 27511
Phone: (919)469-1101
Fax: (919)460-7637



NO.	DATE	REVISION
1	5/13/2013	TOWN OF CARY REVIEW COMMENTS 5/13/2013
2	6/17/2013	TOWN OF CARY REVIEW COMMENTS 5/28/2013
3	8/7/2013	TOWN OF CARY REVIEW COMMENTS 7/5/2013
		FINAL SET



GREEN LEVEL CHURCH RC CROSS SECTIONS
STA. 105+00 TO 107+50
FOR
BELLEWOOD MANOR
SITUATED AT
CARY
WAKE COUNTY, NORTH CAROLINA

JOB #	3690.90
DSN/CHK BY:	DS/DS
DWN BY:	DS
DATE:	4/1/2013
HRZ SCALE:	1"=10'
VRT SCALE:	1"=10'

HTE#: 13-911
13-SB-002
APPROVED BY TOWN OF CARY
DEVELOPMENT REVIEW COMMITTEE
PLANNER *Kathleen* DATE 9/6/2013

SHEET NO.
C28