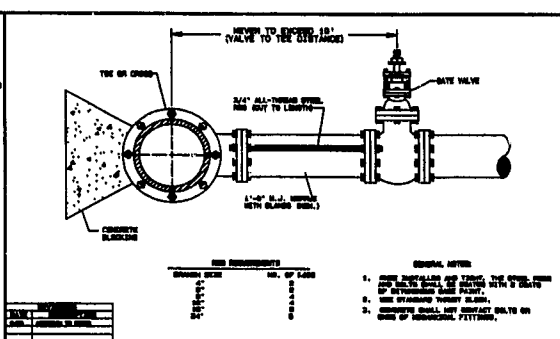
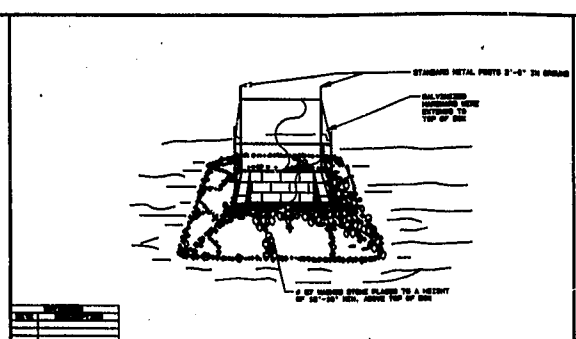


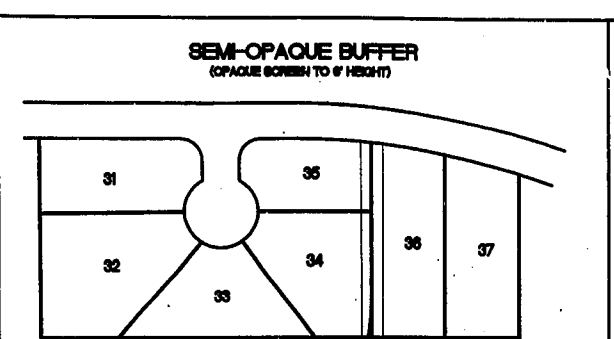
STANDARD 1-1/2 and 2' METER INSTALLATION AND VAULT



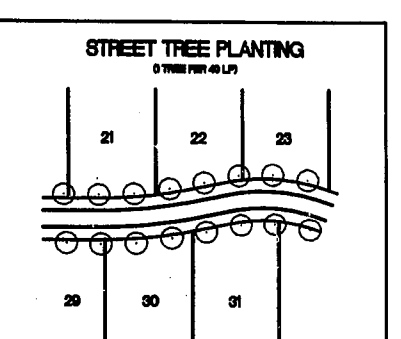
STANDARD VALVE RODDING



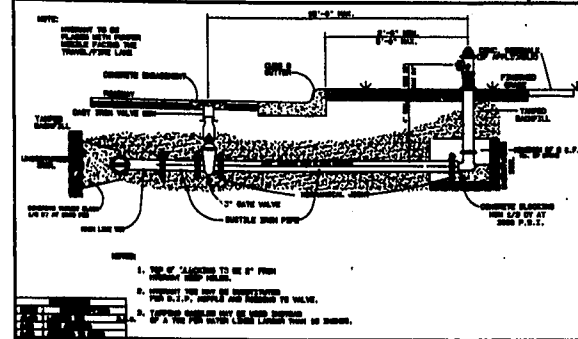
STANDARD CATCH BASIN/YARD INLET PROTECTION



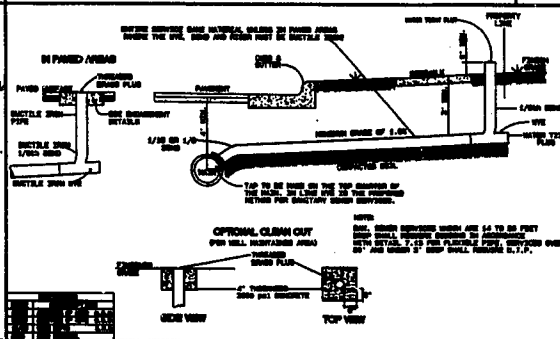
SEMI-OPAQUE BUFFER (OPAQUE SCREEN TO 4' HEIGHT)



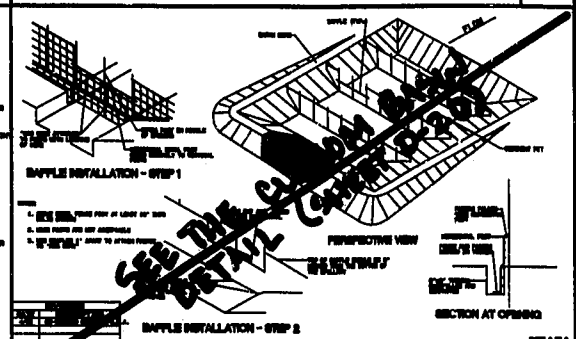
STREET TREE PLANTING (0 TREE PER 40 LP)



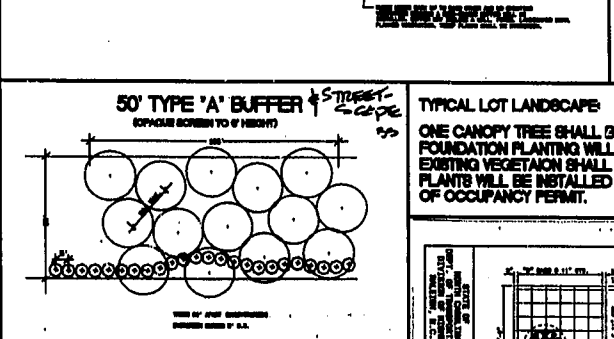
STANDARD HYDRANT INSTALLATION



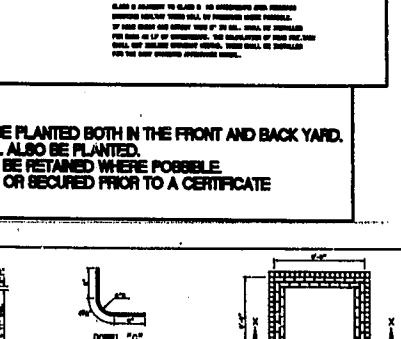
STANDARD SANITARY SEWER TAP AND SERVICE



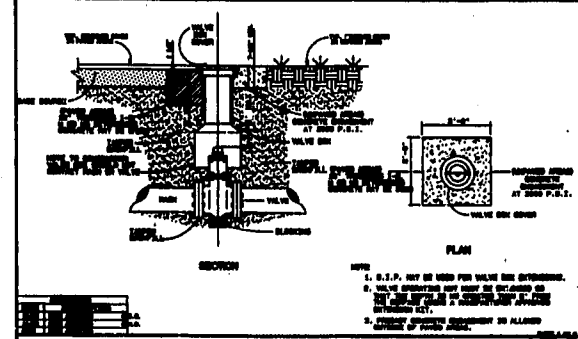
GRAVEL AND RIP-RAP FILTER BASIN



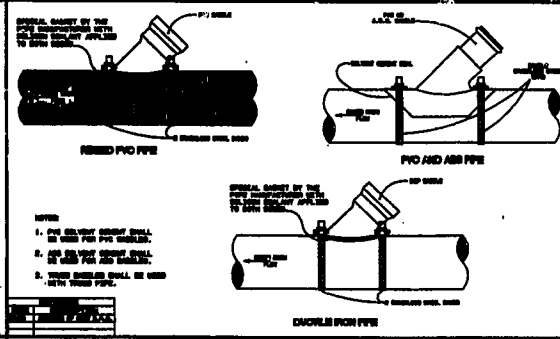
50' TYPE 'A' BUFFER (OPAQUE SCREEN TO 4' HEIGHT)



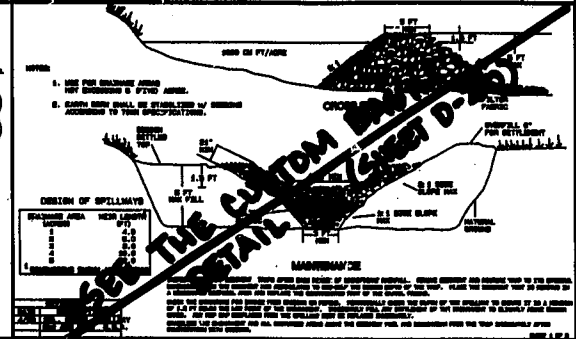
TYPICAL LOT LANDSCAPE



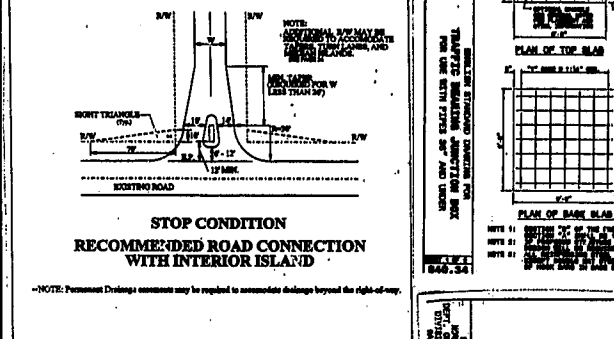
STANDARD VALVE BOX INSTALLATION



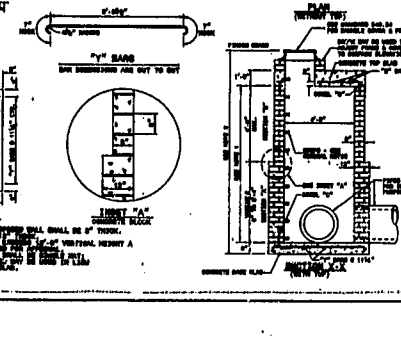
STANDARD SANITARY SEWER LATERAL CONNECTIONS



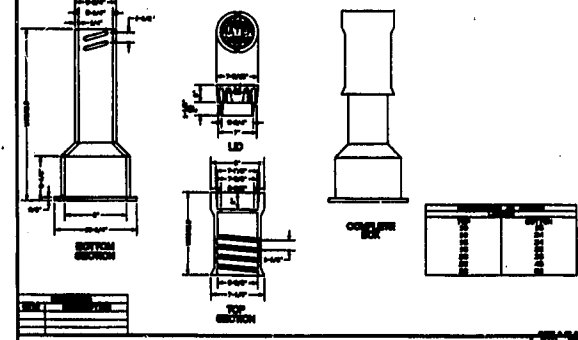
GRAVEL AND RIP-RAP FILTER BASIN



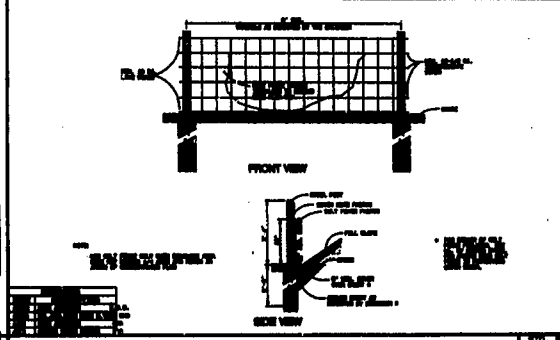
STOP CONDITION RECOMMENDED ROAD CONNECTION WITH INTERIOR ISLAND



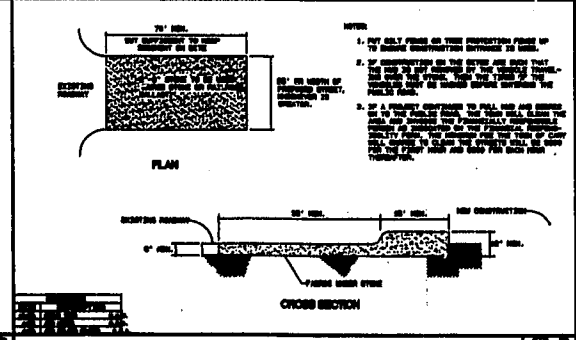
DETAIL SECTION VIEW OF INTERIOR ISLAND AND MARKER



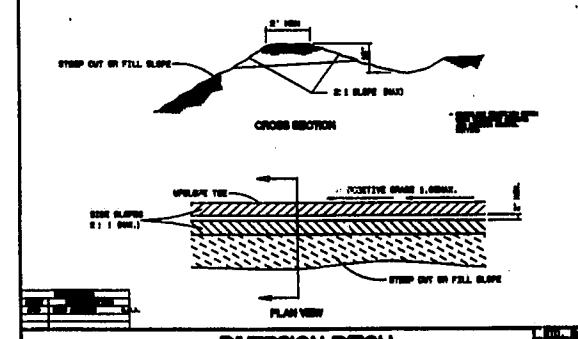
STANDARD VALVE BOX INSTALLATION



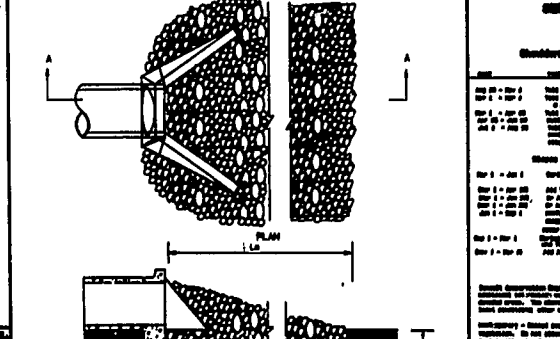
STANDARD TEMPORARY SILT FENCE



CONSTRUCTION ENTRANCE



DIVERSION DITCH

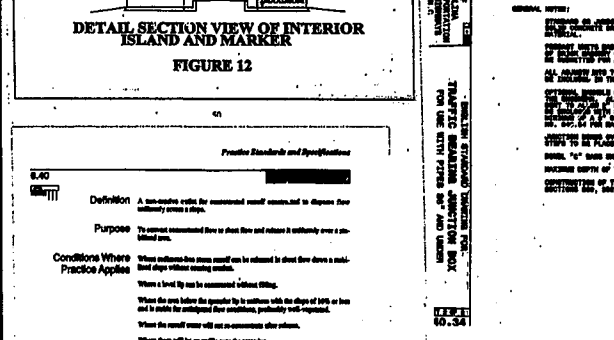


PIPE CULVERT OUTLET PROTECTION

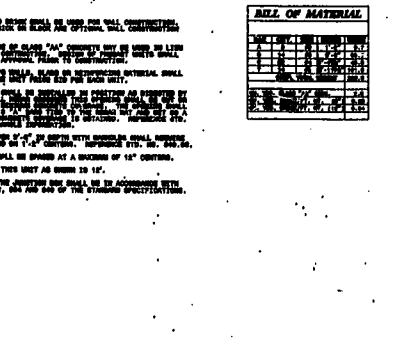
CONCRETE SCHEDULE

Standard, Mix Class, Slump Min 30

ITEM	DESCRIPTION	AMOUNT
101	CONCRETE	1.00
102	REINFORCING BARS	1.00
103	FORMWORK	1.00
104	ADDITIONAL REINFORCING BARS	1.00
105	ADDITIONAL FORMWORK	1.00
106	ADDITIONAL CONCRETE	1.00
107	ADDITIONAL REINFORCING BARS	1.00
108	ADDITIONAL FORMWORK	1.00
109	ADDITIONAL CONCRETE	1.00
110	ADDITIONAL REINFORCING BARS	1.00
111	ADDITIONAL FORMWORK	1.00
112	ADDITIONAL CONCRETE	1.00
113	ADDITIONAL REINFORCING BARS	1.00
114	ADDITIONAL FORMWORK	1.00
115	ADDITIONAL CONCRETE	1.00
116	ADDITIONAL REINFORCING BARS	1.00
117	ADDITIONAL FORMWORK	1.00
118	ADDITIONAL CONCRETE	1.00
119	ADDITIONAL REINFORCING BARS	1.00
120	ADDITIONAL FORMWORK	1.00



DETAIL SECTION VIEW OF INTERIOR ISLAND AND MARKER



DETAIL SECTION VIEW OF INTERIOR ISLAND AND MARKER

Practice Standards and Specifications

6.42

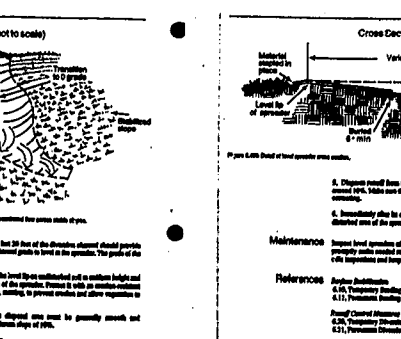
Definition: A concrete curb for roadways used to separate the roadway from the adjacent area.

Purpose: To provide a physical barrier between the roadway and the adjacent area.

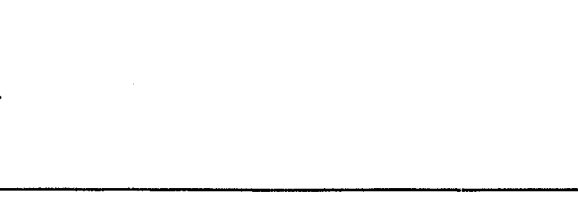
Conditions Where Practice Applies: Where a curb is required to separate the roadway from the adjacent area.

Planting Considerations: The curb shall be installed in accordance with the planting schedule.

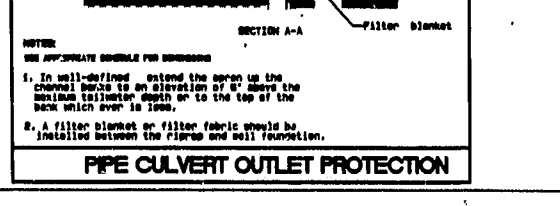
Design Criteria: The curb shall be installed in accordance with the design criteria.



LEVEL SPREADER



DIVERSION DITCH

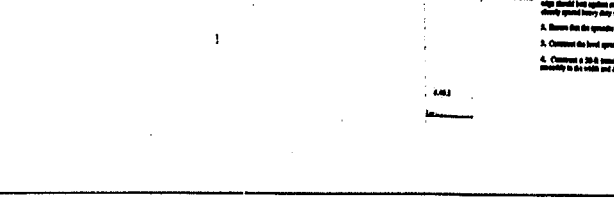


PIPE CULVERT OUTLET PROTECTION

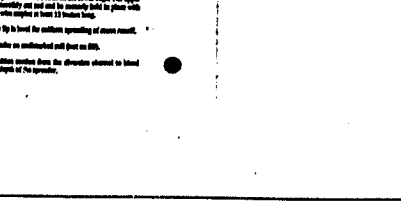
CONCRETE SCHEDULE

Standard, Mix Class, Slump Min 30

ITEM	DESCRIPTION	AMOUNT
101	CONCRETE	1.00
102	REINFORCING BARS	1.00
103	FORMWORK	1.00
104	ADDITIONAL REINFORCING BARS	1.00
105	ADDITIONAL FORMWORK	1.00
106	ADDITIONAL CONCRETE	1.00
107	ADDITIONAL REINFORCING BARS	1.00
108	ADDITIONAL FORMWORK	1.00
109	ADDITIONAL CONCRETE	1.00
110	ADDITIONAL REINFORCING BARS	1.00
111	ADDITIONAL FORMWORK	1.00
112	ADDITIONAL CONCRETE	1.00
113	ADDITIONAL REINFORCING BARS	1.00
114	ADDITIONAL FORMWORK	1.00
115	ADDITIONAL CONCRETE	1.00
116	ADDITIONAL REINFORCING BARS	1.00
117	ADDITIONAL FORMWORK	1.00
118	ADDITIONAL CONCRETE	1.00
119	ADDITIONAL REINFORCING BARS	1.00
120	ADDITIONAL FORMWORK	1.00



DETAIL SECTION VIEW OF INTERIOR ISLAND AND MARKER



DETAIL SECTION VIEW OF INTERIOR ISLAND AND MARKER

DATE

REVISIONS TO PLANS

NO.	DATE	DESCRIPTION
1	08-01	ISSUE FOR CONSTRUCTION
2	08-01	ISSUE FOR CONSTRUCTION
3	08-01	ISSUE FOR CONSTRUCTION
4	08-01	ISSUE FOR CONSTRUCTION
5	08-01	ISSUE FOR CONSTRUCTION
6	08-01	ISSUE FOR CONSTRUCTION
7	08-01	ISSUE FOR CONSTRUCTION
8	08-01	ISSUE FOR CONSTRUCTION
9	08-01	ISSUE FOR CONSTRUCTION
10	08-01	ISSUE FOR CONSTRUCTION

SPAULDING & NORRIS, PA
Design Consultants

972 Trinity Road
Raleigh, North Carolina 27607
Phone (919) 854-1990 Fax (919) 854-1925

PREPARED FOR:
Covington Meadows Subdivision
& Cluster Community

DATE: Thu Sep 20, 2001

PROJECT ENGINEER:
STEPHEN NORRIS 919-854-1990

PROJECT CAD DESIGNER:
JAMES SPAULDING 919-854-1990

PROJECT SURVEYOR:
WILEY WATSON 919-854-1990

**Covington Meadows Subdivision
& Cluster Community**

Standard Details

DRAWING SHEET

D-1.0

PROJECT NUMBER

309-2001

01-58-009
APPROVED
DRC 9/19/02
20: 9/22/02
TS 4-18-02